



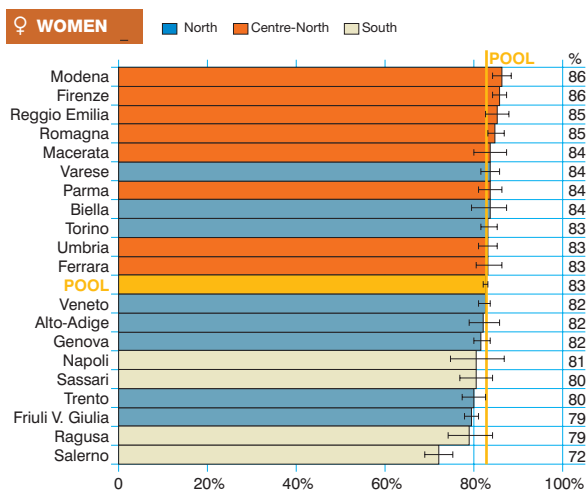
Breast cancer  
(ICD-10 = C50)

Tumore della mammella

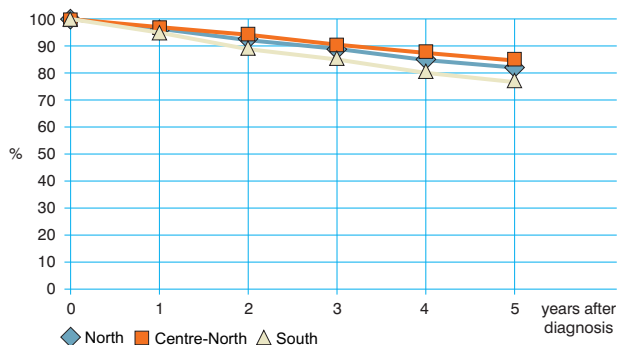
Observed and relative survival (%) by sex and age. Data from the Pool of Italian Cancer Registries follow-up 31.12.2003

	15-44		45-54		55-64		65-74		75+		ALL	
	obs	rel	obs	rel	obs	rel	obs	rel	obs	rel	obs	rel
<b>♂ MEN (n)</b>	<b>(26)</b>		<b>(58)</b>		<b>(107)</b>		<b>(154)</b>		<b>(120)</b>		<b>(465)</b>	
1 year	100	100	97	97	95	96	91	94	84	93	91	95
3 years	92	92	86	87	84	87	80	88	69	93	79	89
<b>5 years</b>	<b>92</b>	<b>92</b>	<b>78</b>	<b>80</b>	<b>74</b>	<b>79</b>	<b>72</b>	<b>85</b>	<b>53</b>	<b>92</b>	<b>69</b>	<b>85</b>
95% CI	(81-100)	(82-100)	(67-89)	(69-91)	(66-83)	(70-88)	(64-79)	(76-93)	(44-62)	(76-100)	(65-74)	(79-90)
<b>♀ WOMEN (n)</b>	<b>(5 639)</b>		<b>(10 209)</b>		<b>(11 711)</b>		<b>(12 653)</b>		<b>(10 819)</b>		<b>(51 031)</b>	
1 year	99	99	98	99	98	98	95	97	86	92	95	97
3 years	92	92	93	94	91	93	86	89	67	83	85	90
<b>5 years</b>	<b>86</b>	<b>87</b>	<b>88</b>	<b>89</b>	<b>85</b>	<b>87</b>	<b>78</b>	<b>84</b>	<b>52</b>	<b>75</b>	<b>77</b>	<b>85</b>
95% CI	(85-87)	(86-87)	(88-89)	(89-90)	(84-85)	(86-88)	(77-78)	(83-84)	(51-53)	(74-77)	(76-77)	(84-85)
<b>ALL (n)</b>	<b>(5 665)</b>		<b>(10 267)</b>		<b>(11 818)</b>		<b>(12 807)</b>		<b>(10 939)</b>		<b>(51 496)</b>	
1 year	99	99	98	99	98	95	95	97	86	92	95	97
3 years	92	92	93	94	91	92	86	89	68	83	85	90
<b>5 years</b>	<b>86</b>	<b>87</b>	<b>88</b>	<b>89</b>	<b>85</b>	<b>87</b>	<b>77</b>	<b>84</b>	<b>52</b>	<b>75</b>	<b>77</b>	<b>85</b>
95% CI	(85-87)	(86-87)	(88-89)	(89-90)	(84-85)	(86-87)	(77-78)	(83-84)	(51-53)	(74-77)	(76-77)	(84-85)

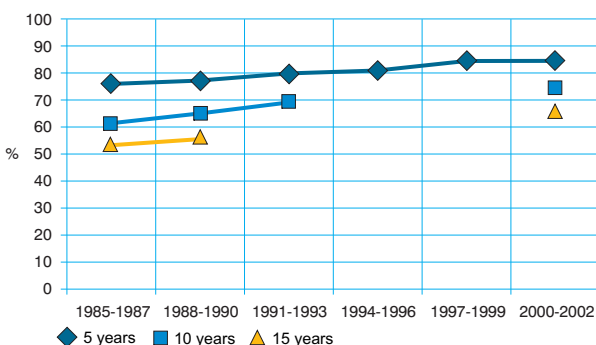
Five-year age-standardised relative survival



Relative survival by Italian Areas



Trend of relative survival Pool of some Italian Registries



➔ Ulteriori dati sono disponibili presso: [www.registri-tumori.it](http://www.registri-tumori.it)