



Situazione Tumori in Alto Adige

20.03.2013

Copyright © 2013, Cancer Registry South Tyrol

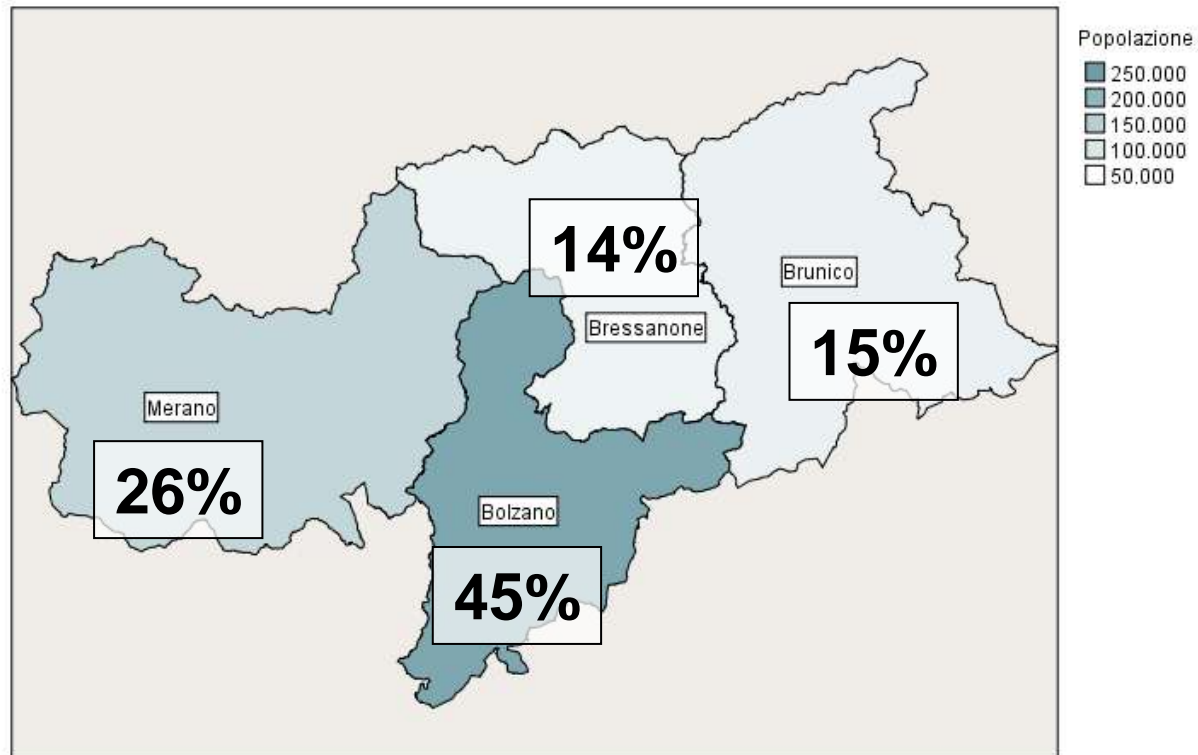


Storia del Registro Tumori

- **Inizio attività nel 1995**
- **Situato presso il reparto di Anatomia e Istologia Patologica dell'ospedale di Bolzano**
- **Rilevamento di tutte le diagnosi tumorali in Alto Adige con schede di segnalazione o trace back utilizzando referti e SDO**
 - ▶ Incidenza (nuovi casi)
 - ▶ Mortalità (decessi)
- **Codifica in ICDO-3**
- **Accreditamento AIRTUM e IARC (2001)**

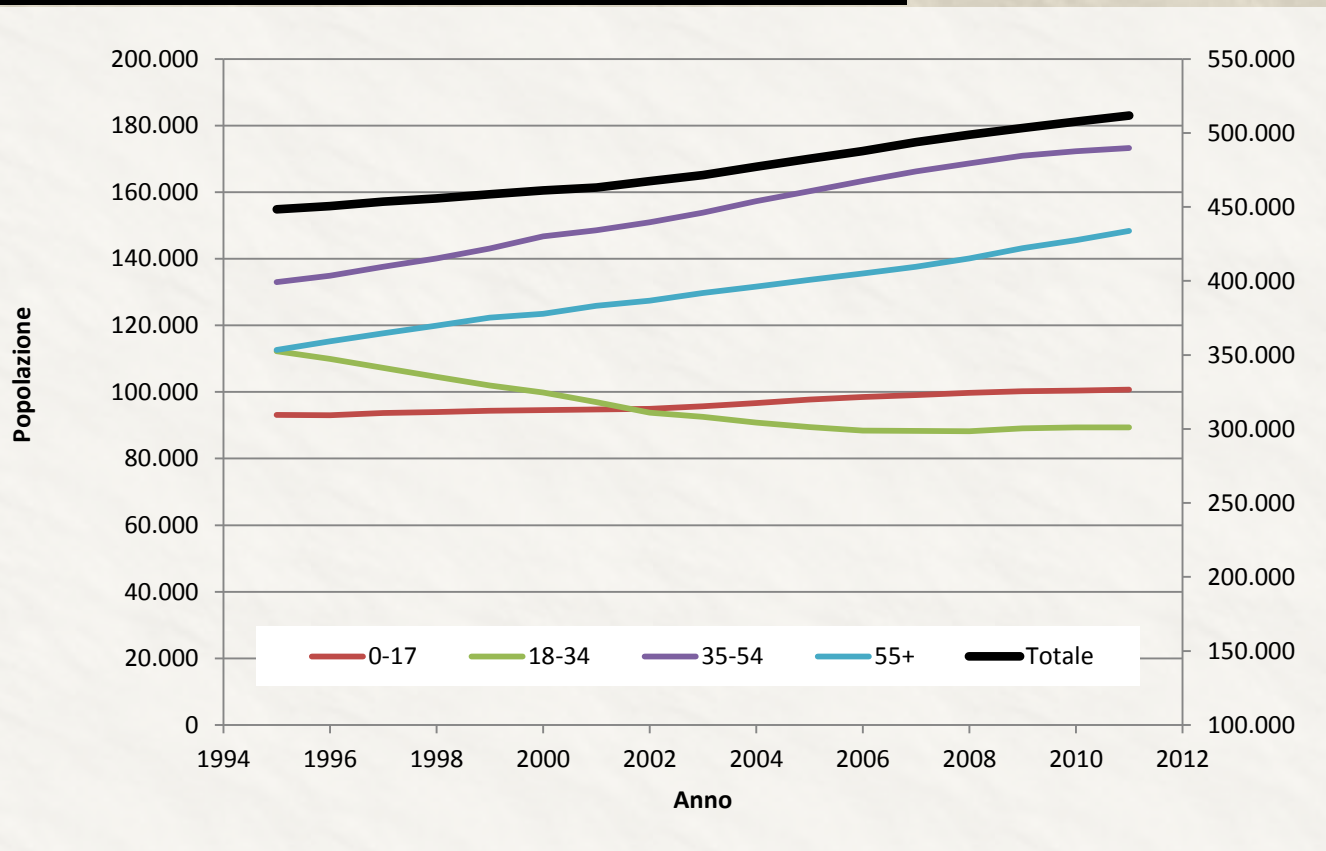


Popolazione 2011: n = 511.688



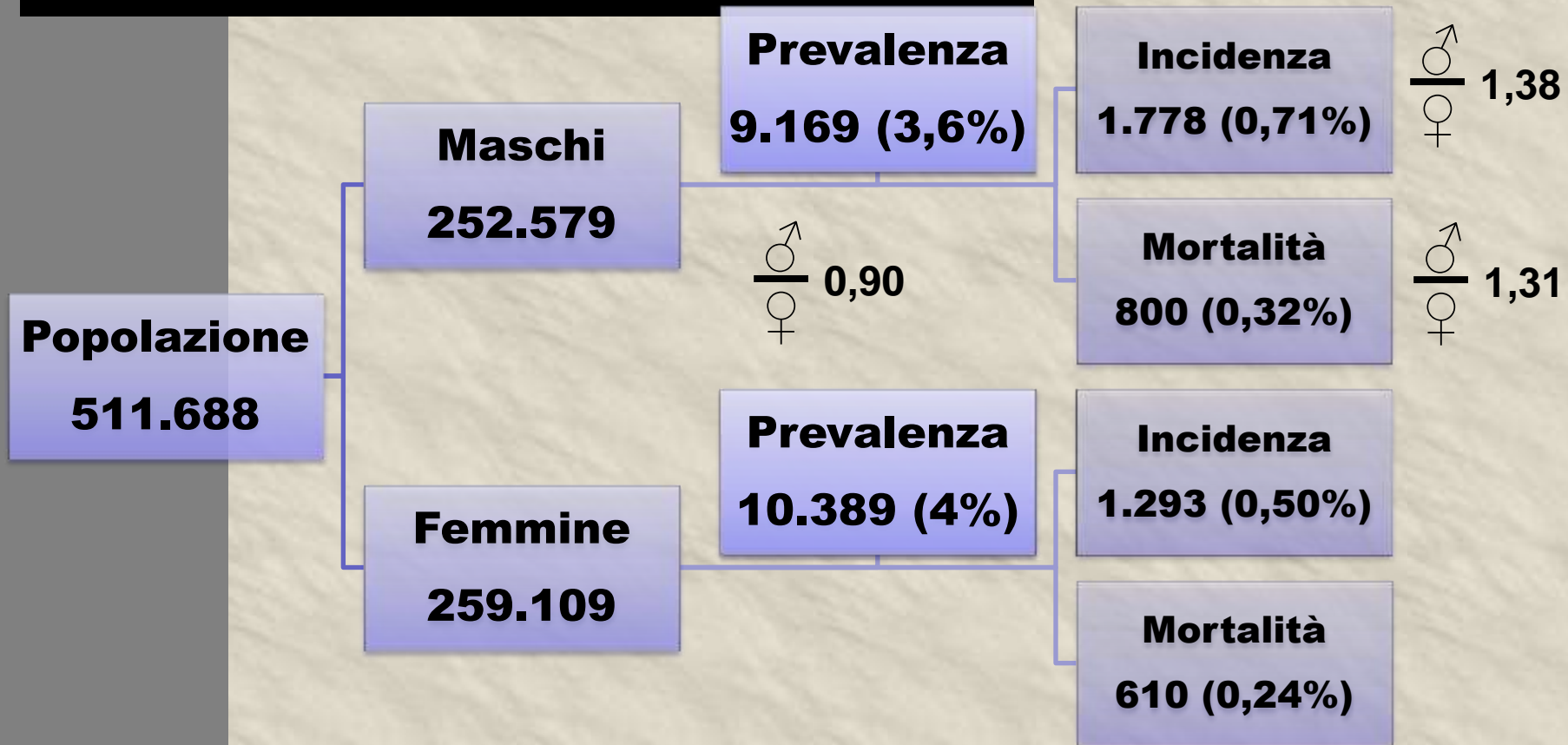


Popolazione 1995-2011





Casi tumorali 2011 (escl. ICD10 C44)

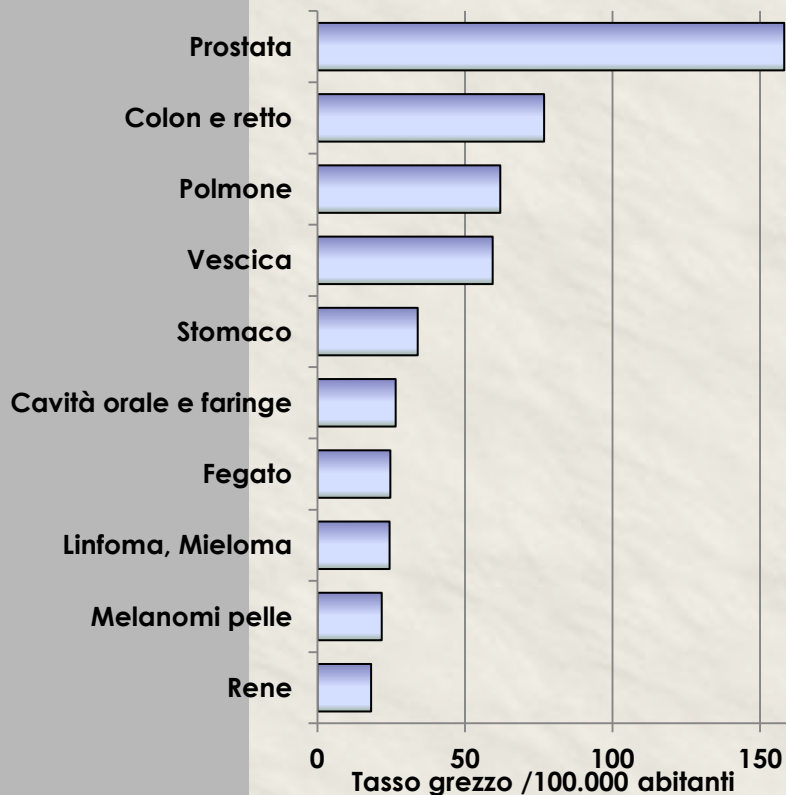




Maschi: Incidenza - Mortalità

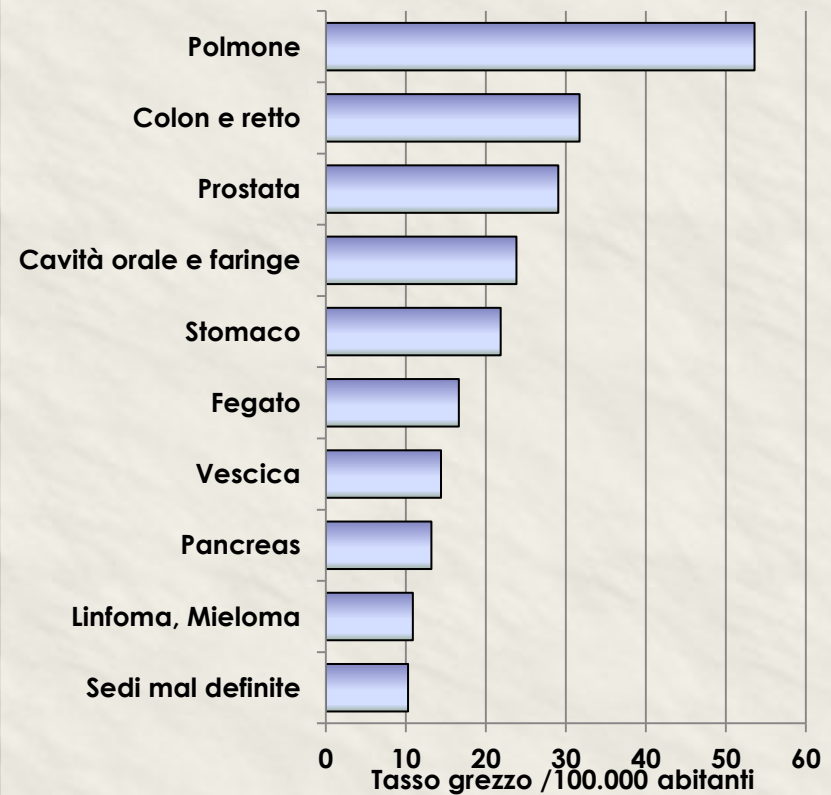
Incidenza Maschi

Totale 648/100.000 per anno (2001-2005)



Mortalità Maschi

Totale 266/100.000 per anno (2001-2005)

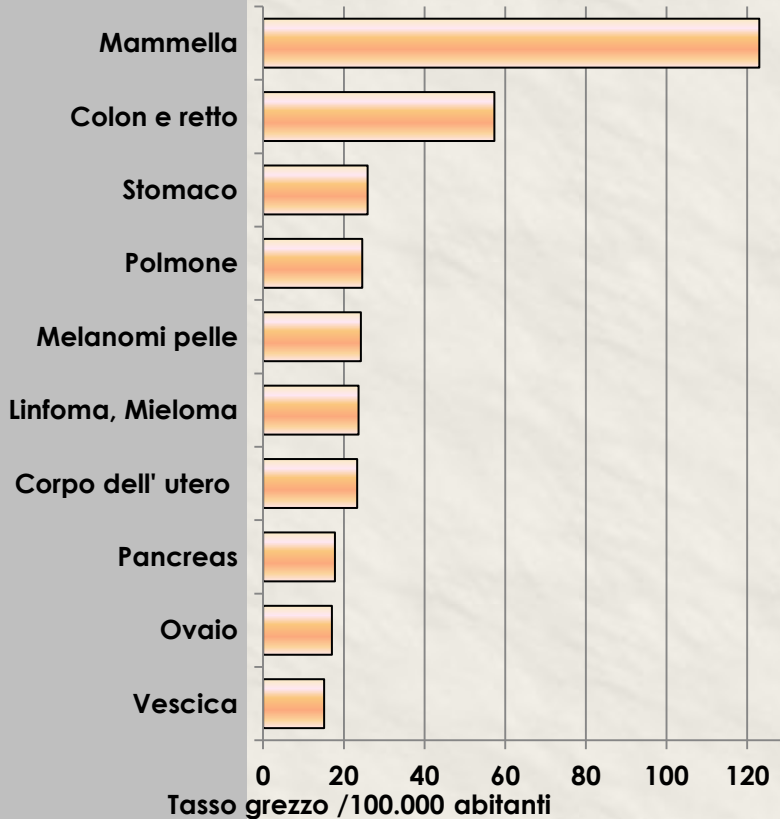




Femmine: Incidenza - Mortalità

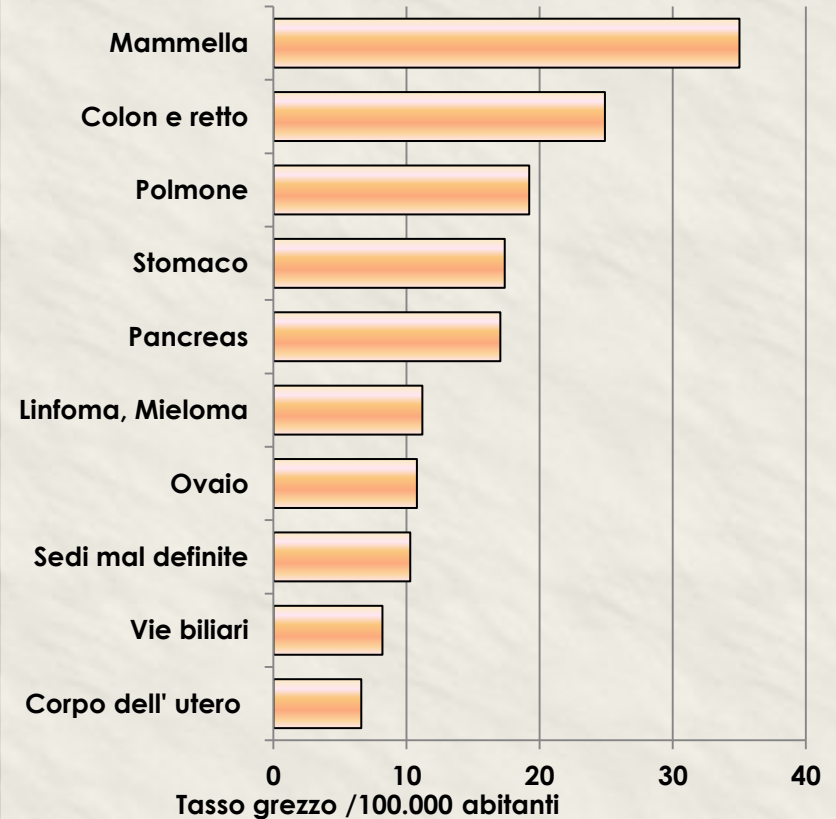
Incidenza Femmine

Totale 486/100.000 per anno (2001-2005)



Mortalità Femmine

Totale 210/100.000 per anno (2001-2005)





Atlante

CANCER MAPPING IN ALPINE REGIONS 2001-2005

- **Confronto dati di 14 registri tumori**
- **Periodo 2001-2005**
 - ▶ Popolazione 6,2 milioni
 - ▶ 151.000 casi incidenti
 - ▶ 74.000 decessi
- **Suddivisione dell'Alto Adige in 20 distretti**



Mammella, Prostata

Fig. 27: Breast (Females) – Incidence – Smoothed Map

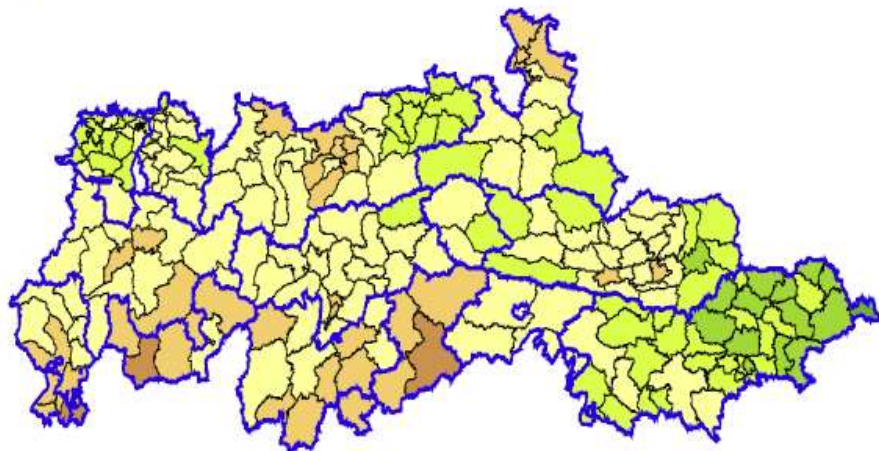


Fig. 35: Prostate – Incidence – Smoothed Map

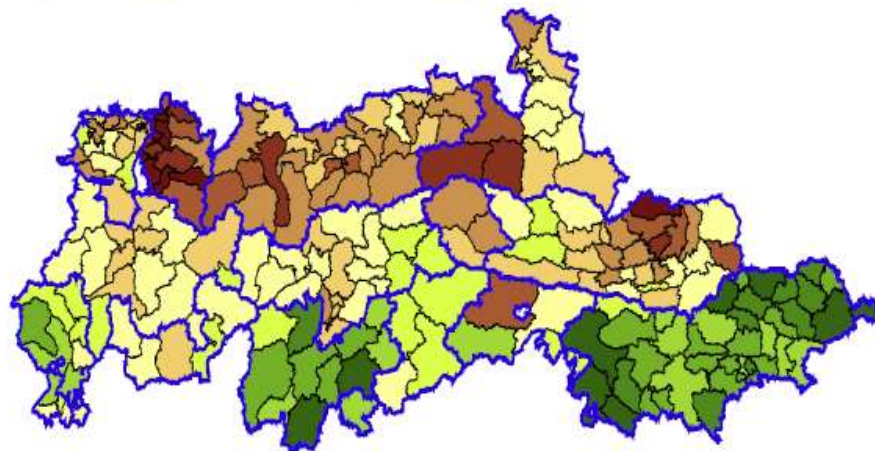
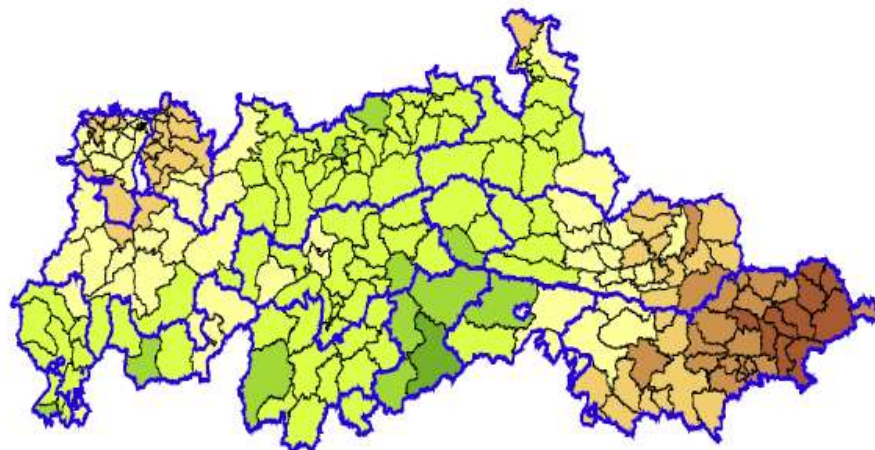


Fig. 28: Breast (Females) – Mortality – Smoothed Map



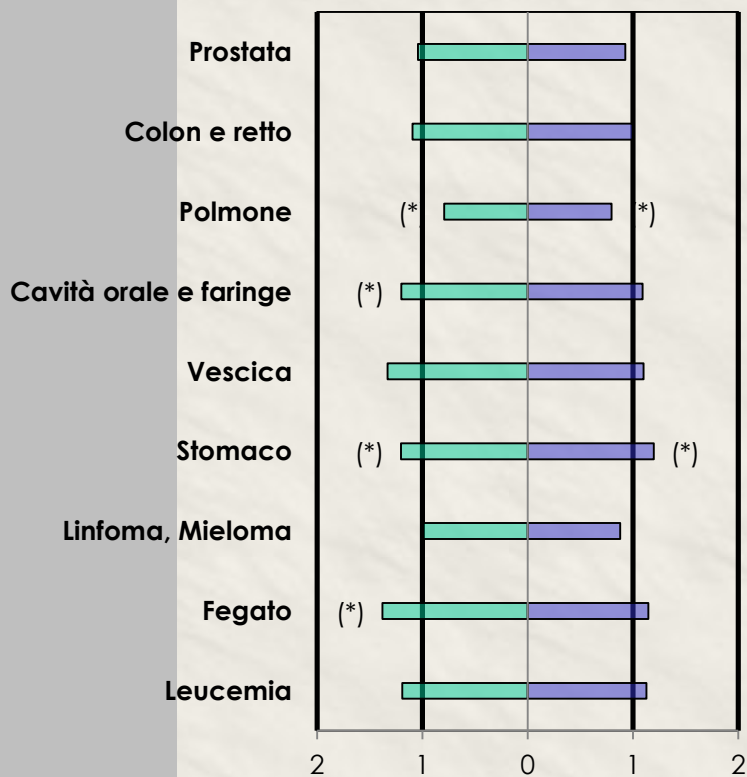
Fig. 36: Prostate – Mortality – Smoothed Map



Atlante

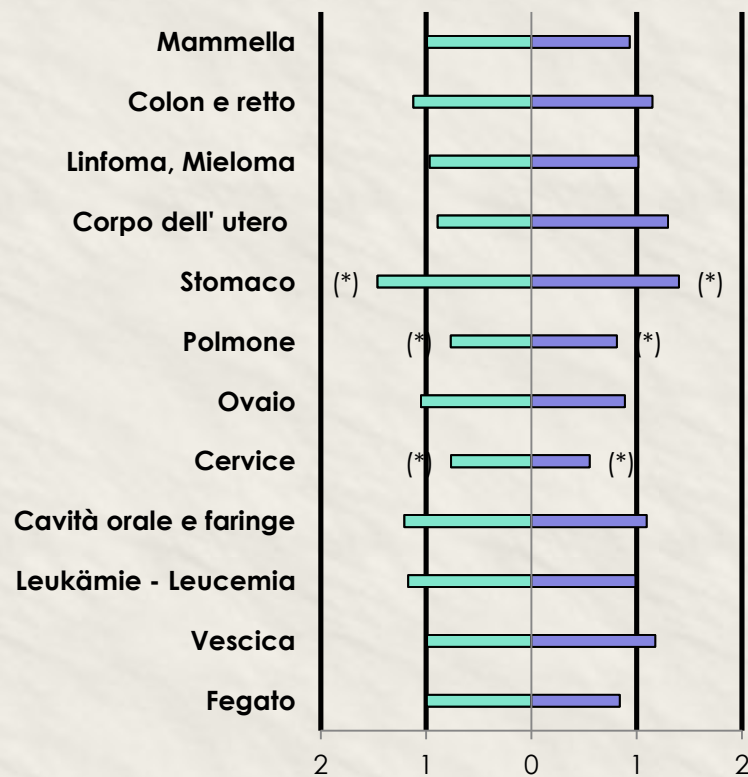
Maschi (*) diff. stat. significativa

SIR (Incidence) - SMR (Mortality)



Femmine (*) diff. stat. significativa

SIR (Incidence) - SMR (Mortality)





HNOL – Liver males

Fig. 9: Head & Neck and Oesophagus and Larynx – Incidence – Smoothed Map - Males

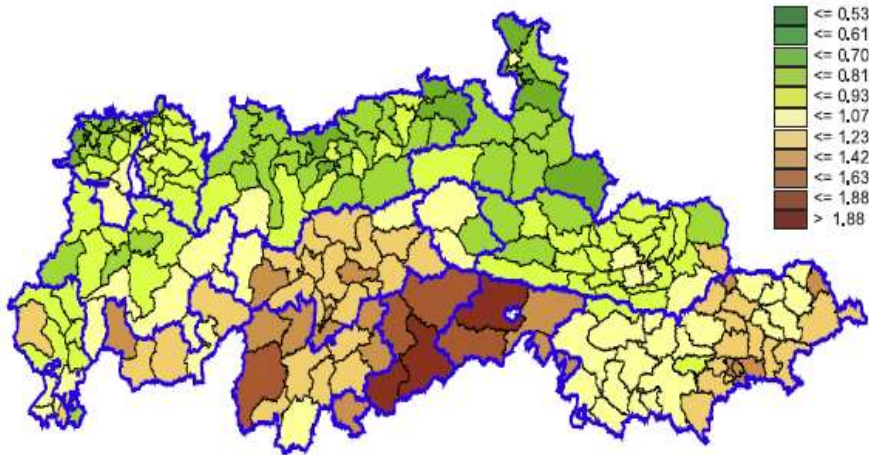


Fig. 21: Liver – Incidence – Smoothed Map - Males

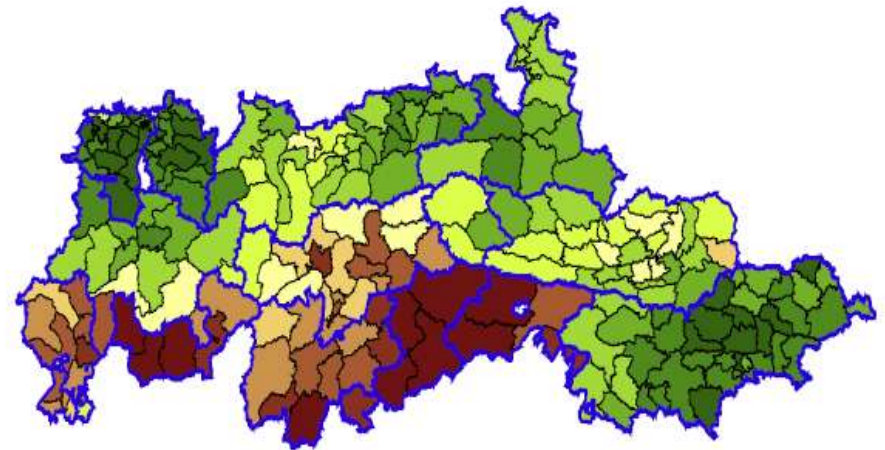


Fig. 10: Head & Neck and Oesophagus and Larynx – Mortality – Smoothed Map - Males

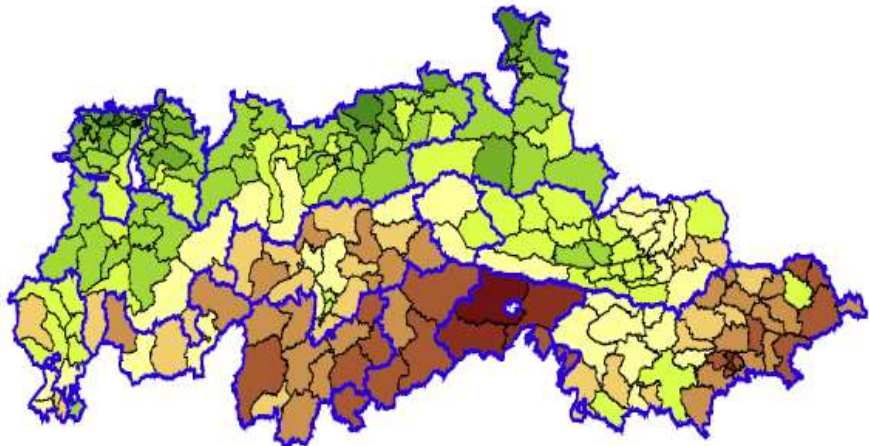
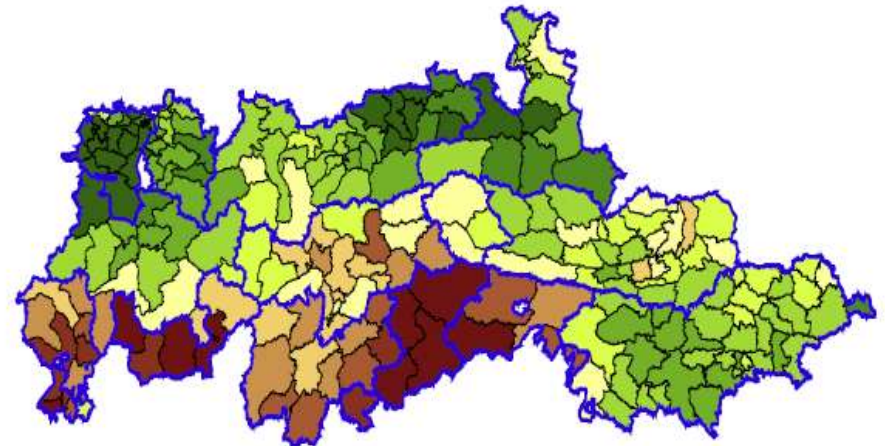


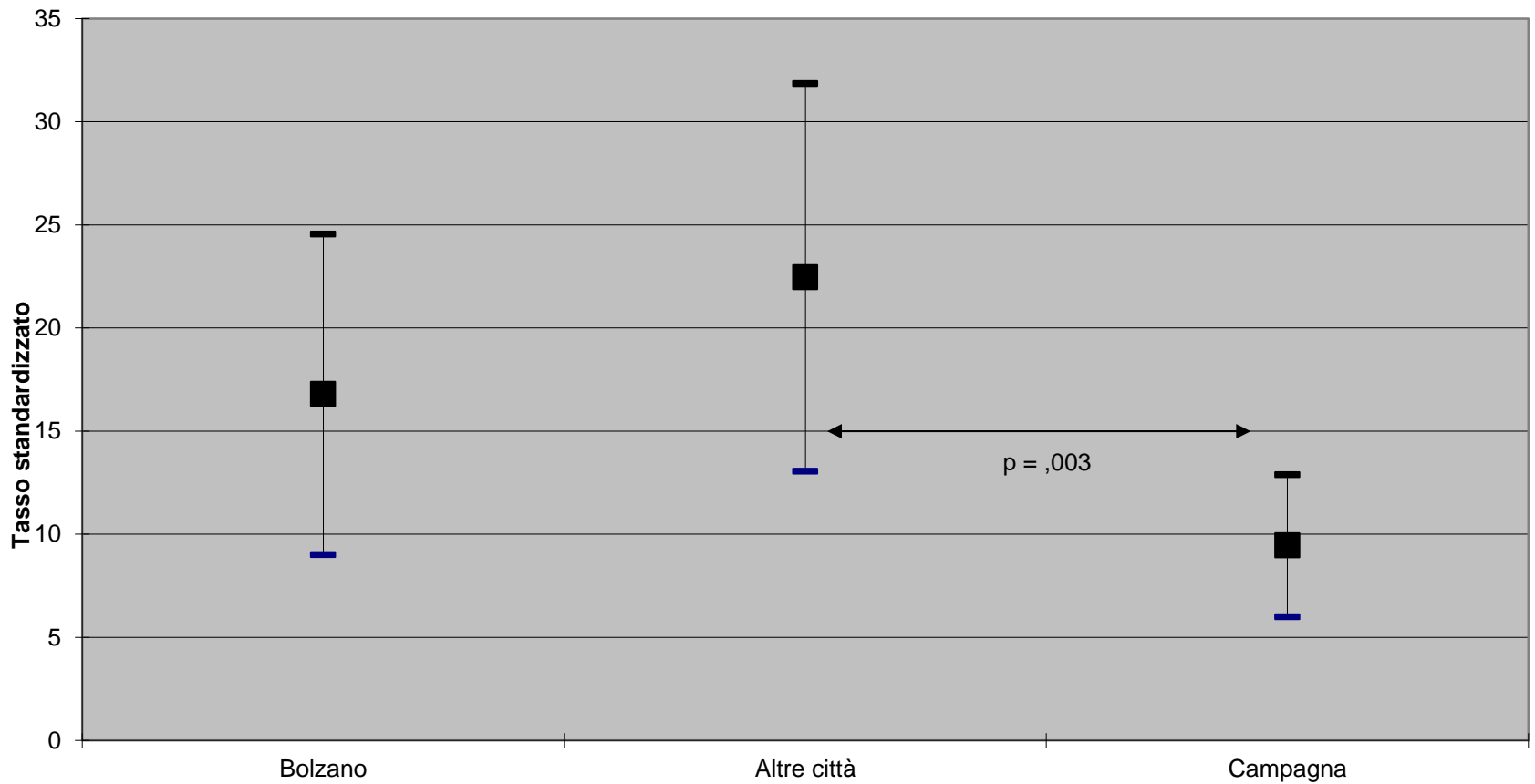
Fig. 22: Liver – Mortality – Smoothed Map - Males





Fegato

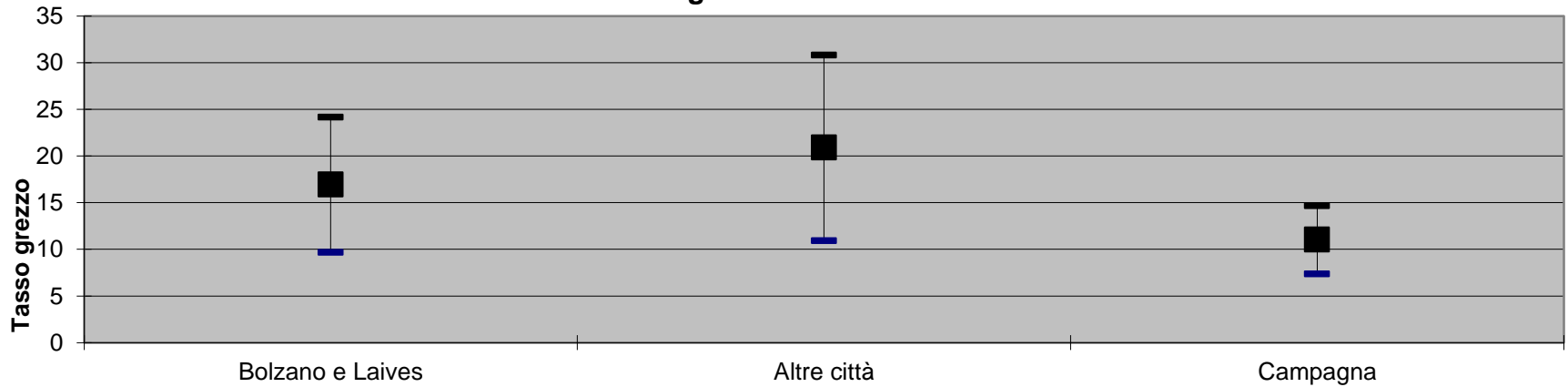
Incidenza fegato con intervallo di confidenza al 95%
1999-2003 – Maschi 30-59



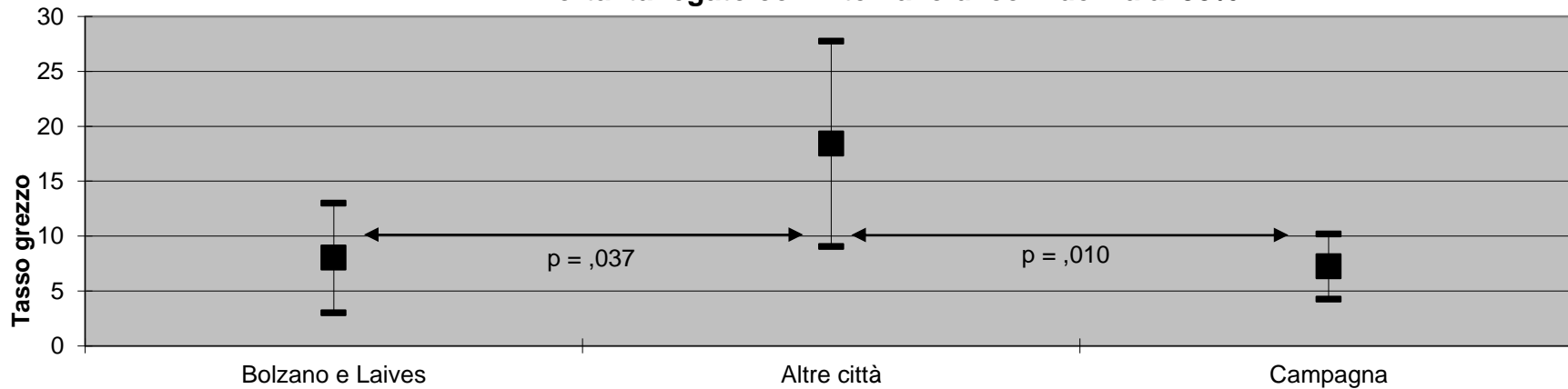


Fegato: 2001-2005 - Maschi 30-59

Incidenza fegato con intervallo di confidenza al 95%



Mortalità fegato con intervallo di confidenza al 95%



ITAlian.LIver.CAnCER association (1998 to 2013)



1. Benvegnù L. (Padova)
2. Borzio F. (Milano)
3. Caturelli E. (Viterbo)
4. Chiaramonte M. (Negrar)
5. Del Poggio P. (Treviglio)
6. Di Nolfo M.A. (Seriante)
7. Farinati F. (Padova)
8. Giannini E. (Genova)
9. Rapaccini G.L. (Roma)
10. Trevisani F. (Bologna)
11. Zoli M. (Bologna)
12. Cammà C. (Palermo)
13. Felder M. (Bolzano)
14. Foschi G.F. (Faenza)
15. Gasbarrini A. (Roma)
16. Missale G. (Parma)
17. Morisco F. (Napoli)
18. Piscaglia F. (Bologna)
19. Sacco R. (Pisa)
20. Svegliati-Baroni G. (Ancona)
21. Virdone R. (Palermo)

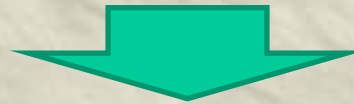


Felder (2010): Eziologia dell'epatocarcinoma in Italia n = 2042 (10 centri, 1987-2006), Database ITA.LI.CA, 2006

• HCV	50%	}	77% virus
• HBsAg	10%		
• HCV + HBsAg	3%		
• HCV + Alcol	10%	}	30% alcol
• HBsAg + alcol	4%		
• Alcol	16%	}	
• Altro	8%		



Gastroenterologia, Ambulatorio Epatologico Ospedale BZ



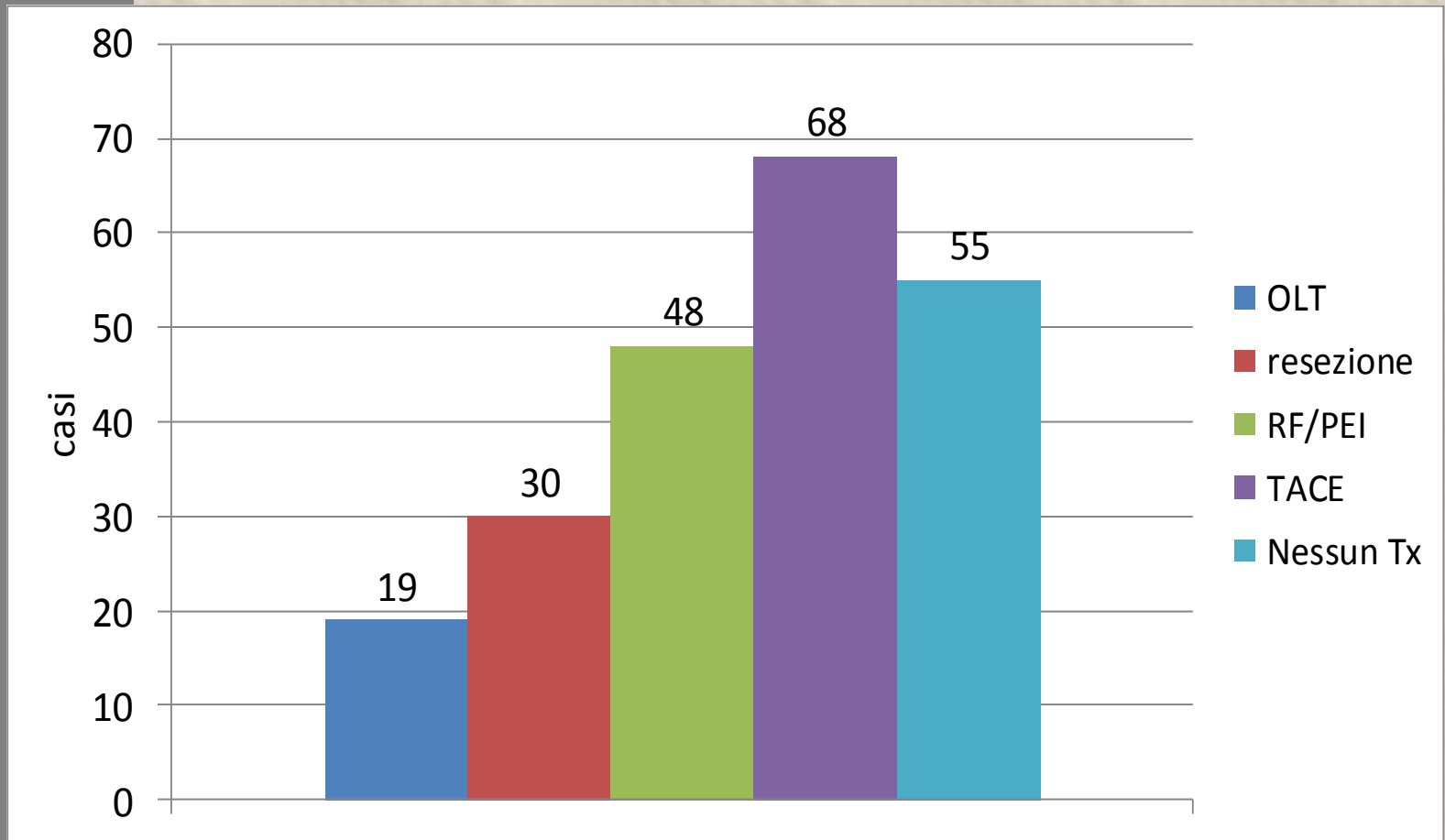
**2003: Gruppo interdisciplinare tra Epatologia-
Radiologia-Anatomia Patologica-Chirurgia**



**Studio osservazionale su
terapia e sopravvivenza dei
pazienti con HCC**

**Analisi su 229 pazienti consecutivi con
nuova diagnosi di HCC osservati
tra il 2003 e 2009**

Allocazione ai trattamenti dei 229 pazienti con HCC BZ 2003-2009





Risultati: sopravvivenza per terapia n = 229, Ospedale BZ

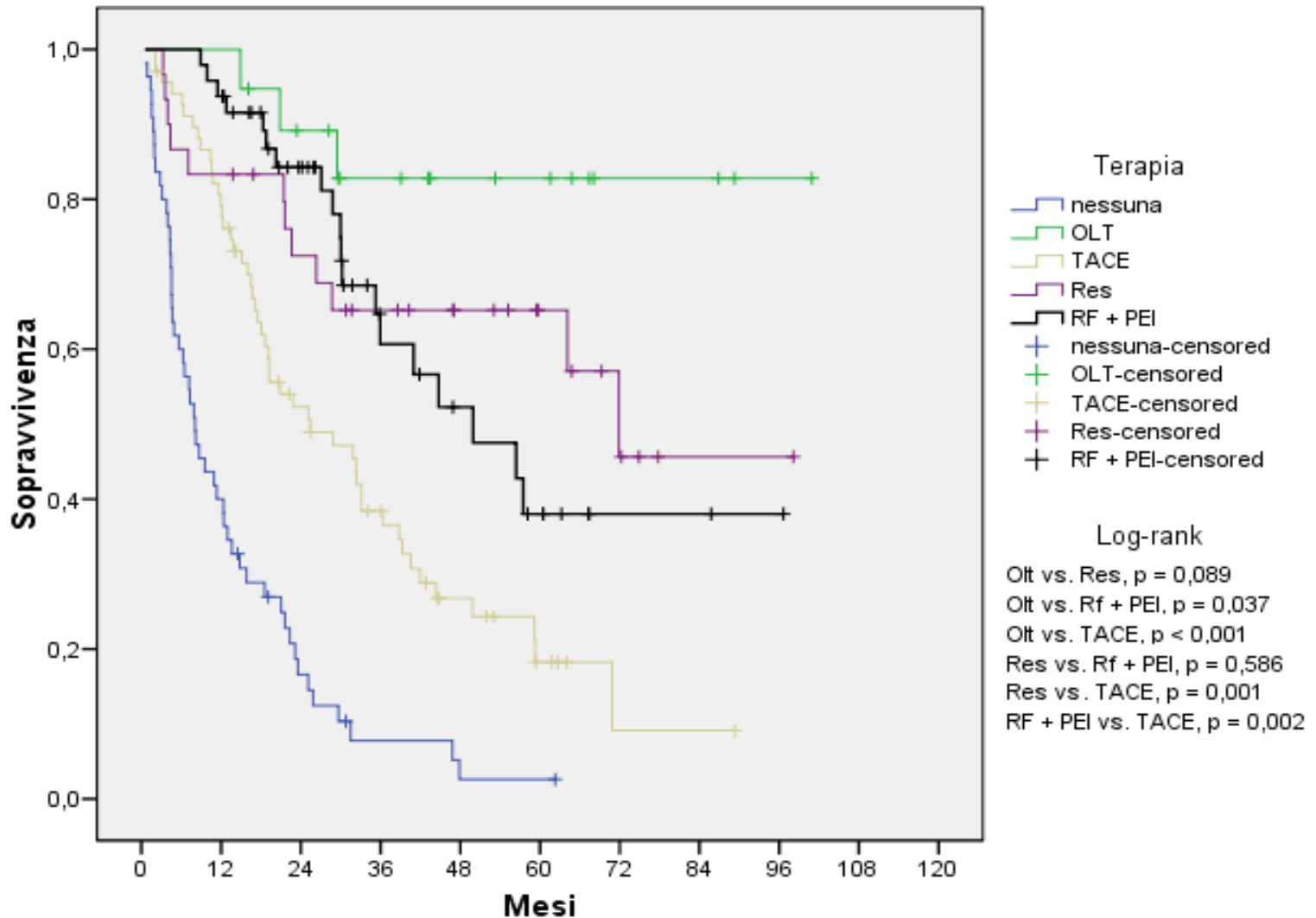


Fig. 11: Stomach – Incidence – Smoothed Map - Females

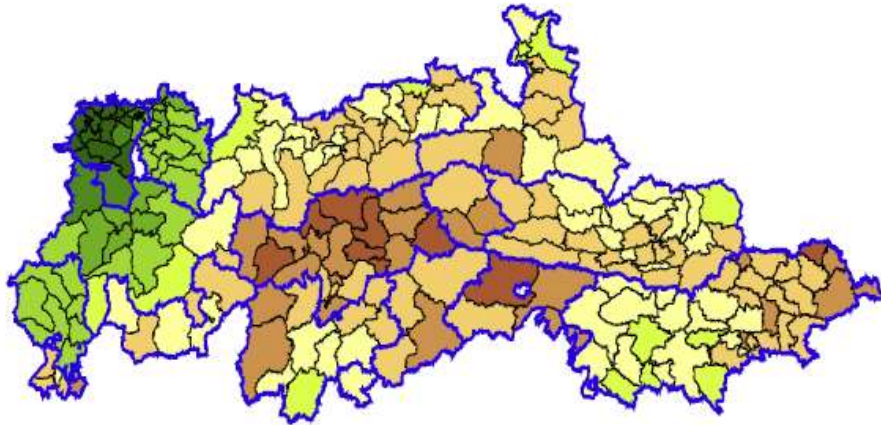


Fig. 13: Stomach – Incidence – Smoothed Map - Males

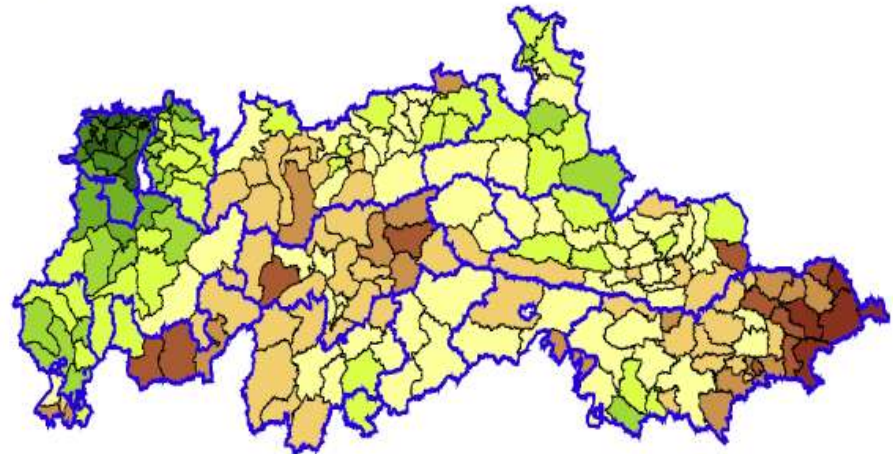


Fig. 12: Stomach – Mortality – Smoothed Map - Females

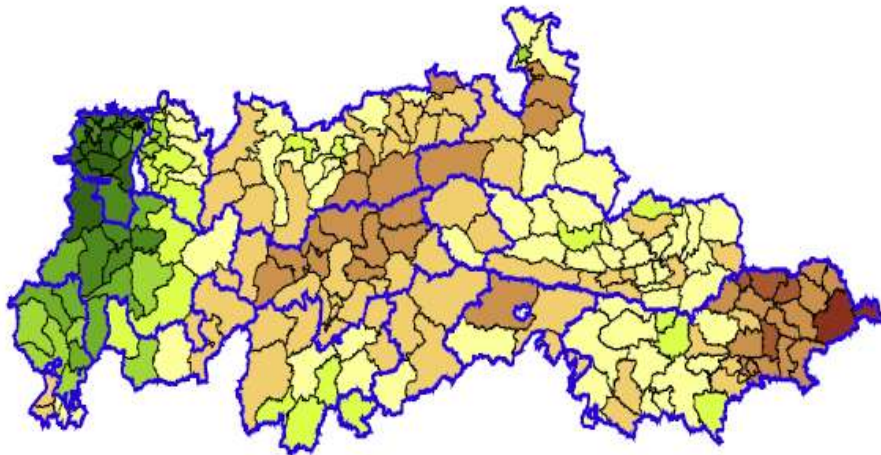
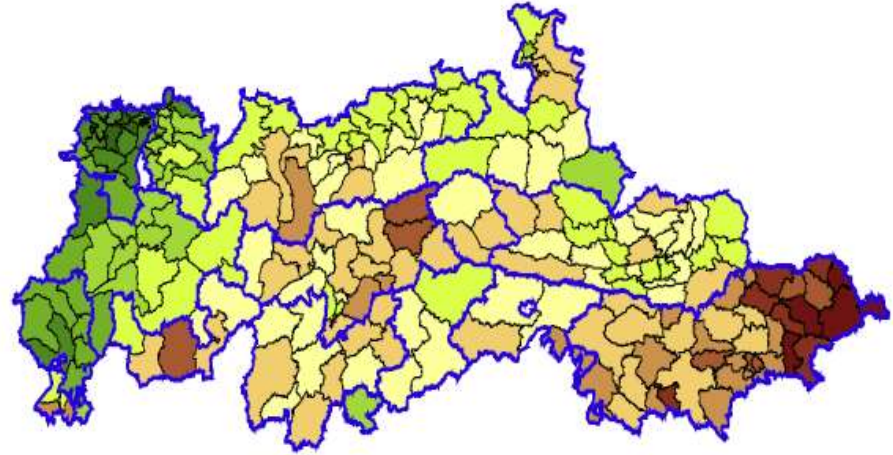


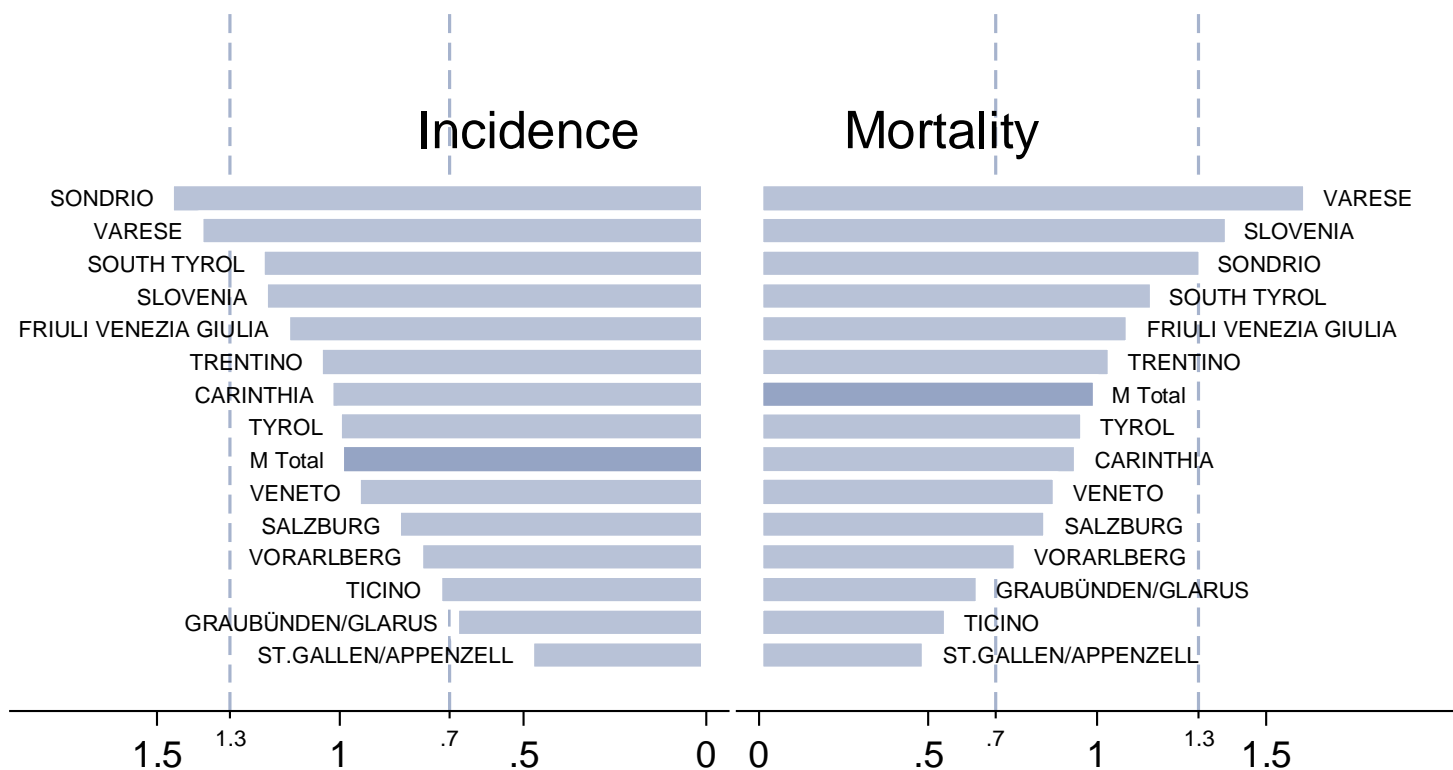
Fig. 14: Stomach – Mortality – Smoothed Map - Males





Stomaco - Maschi

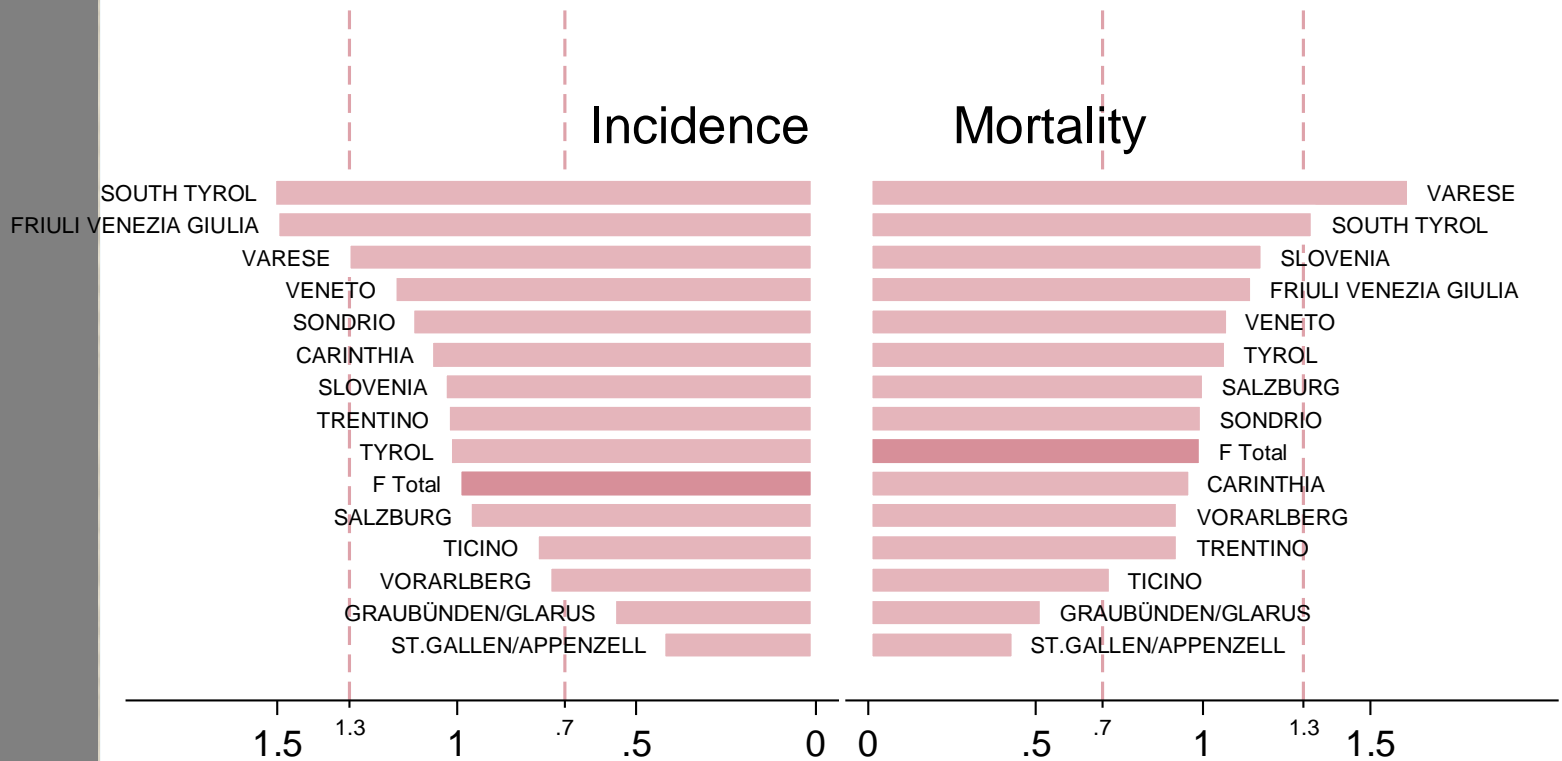
C16 Stomach Males





Stomaco - Femmine

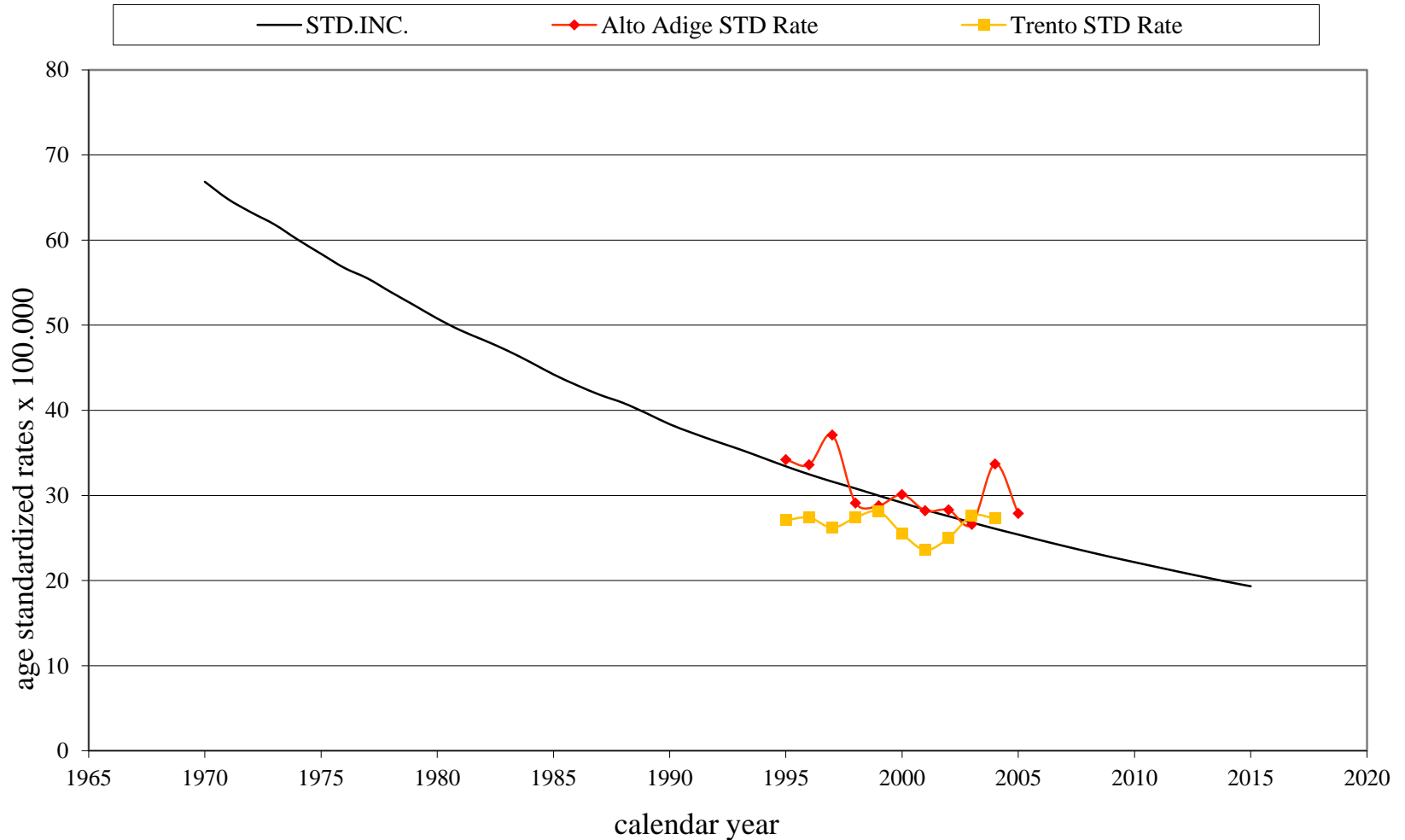
C16 Stomach Females





Trend - Stomaco

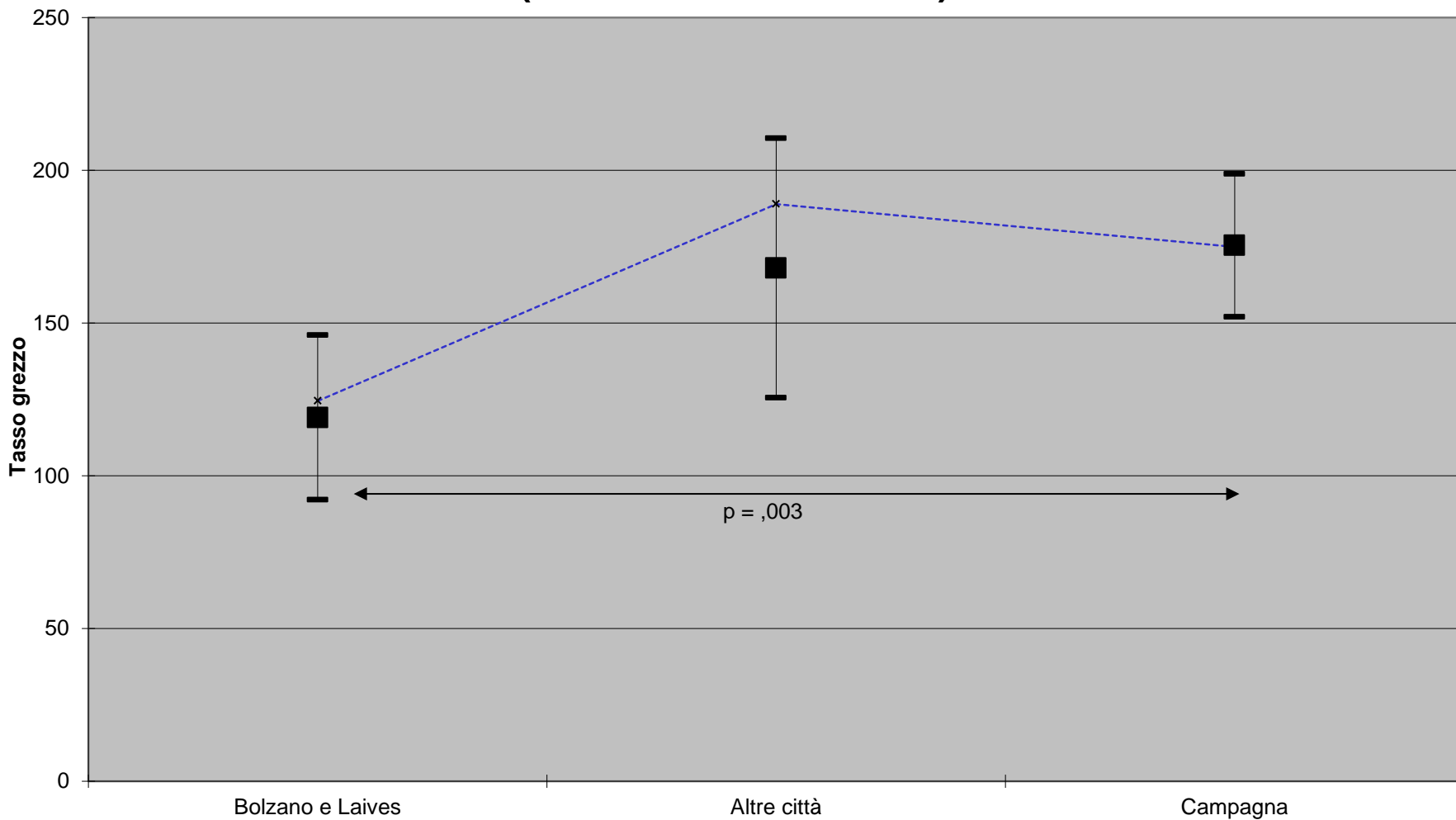
Time trends of mortality and morbidity estimates (standardized rates)





Stomaco Maschi

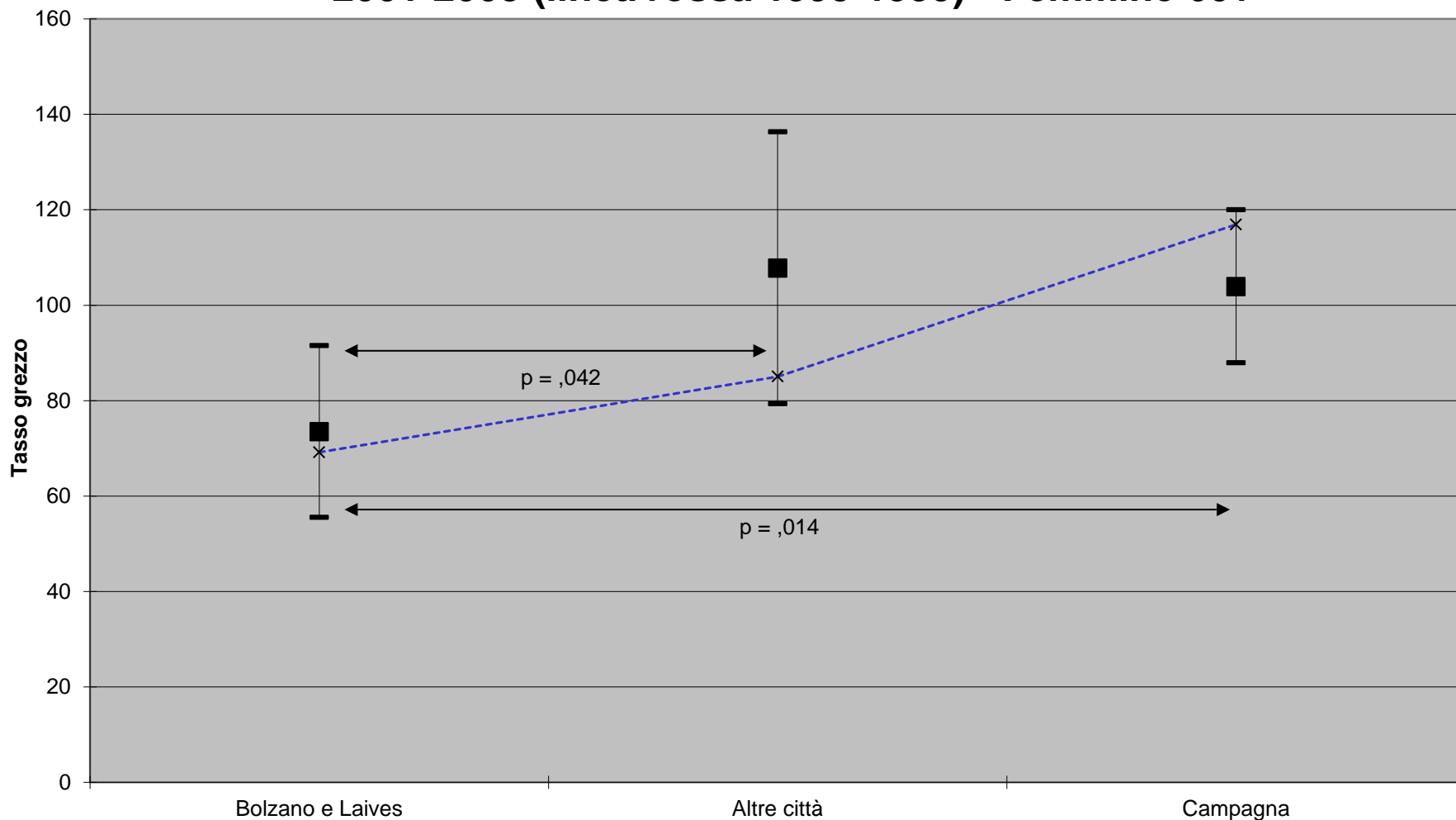
Incidenza stomaco con intervallo di confidenza al 95%
2001-2005 (linea rossa 1995-1999) - Maschi 60+





Stomaco Femmine

Incidenza stomaco con intervallo di confidenza al 95%
2001-2005 (linea rossa 1995-1999) - Femmine 60+





Conclusioni

**Recuperare ritardo
registrazione
(attualmente 2007)**

**Aderire ed implementare
studi high resolution**

**Partecipare nuovo round
Cancer in alpine regions**

