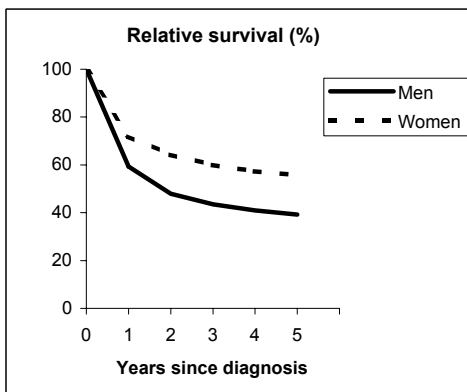


# ALL SITES BUT 173

## TORINO - Incident cases 1990-'94

AGE CLASSES	Men	Women
15-44	601	802
45-54	1,060	1,404
55-64	2,835	2,180
65-74	3,255	2,513
75+	2,570	2,746
<b>ALL</b>	<b>10,321</b>	<b>9,645</b>

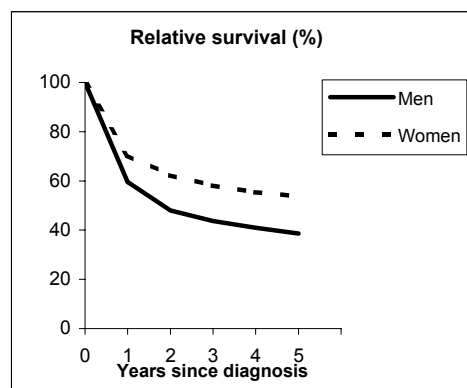


**Observed and Relative survival (%)**  
(in parenthesis 95% confidence limits of 5 years survival)

	Men		Women		ALL	
	<i>obs</i>	<i>rel</i>	<i>obs</i>	<i>rel</i>	<i>obs</i>	<i>rel</i>
1 year	57	59	70	72	63	65
3 years	39	43	56	60	47	52
<b>5 years</b>	<b>32</b>	<b>39</b>	<b>49</b>	<b>56</b>	<b>40</b>	<b>47</b>
95% CI	(31-33)	(38-40)	(48-50)	(55-57)	(40-41)	(47-48)

## GENOVA - Incident cases 1990-'94

AGE CLASSES	Men	Women
15-44	450	636
45-54	850	1,046
55-64	2,322	1,681
65-74	3,362	2,193
75+	2,933	2,999
<b>ALL</b>	<b>9,917</b>	<b>8,555</b>



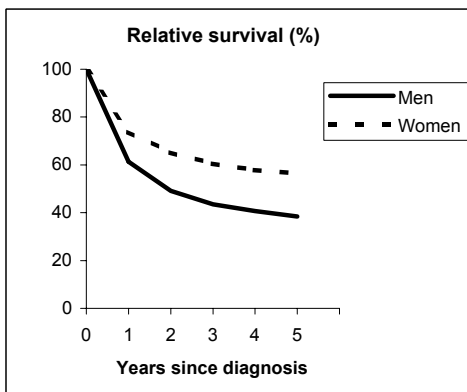
**Observed and Relative survival (%)**  
(in parenthesis 95% confidence limits of 5 years survival)

	Men		Women		ALL	
	<i>obs</i>	<i>rel</i>	<i>obs</i>	<i>rel</i>	<i>obs</i>	<i>rel</i>
1 year	57	60	68	70	62	65
3 years	38	44	53	58	45	51
<b>5 years</b>	<b>31</b>	<b>39</b>	<b>45</b>	<b>54</b>	<b>37</b>	<b>46</b>
95% CI	(30-31)	(38-40)	(44-46)	(52-55)	(37-38)	(45-47)

# ALL SITES BUT 173

## VARESE - Incident cases 1990-'94

AGE CLASSES	Men	Women
15-44	511	818
45-54	910	1,179
55-64	2,301	1,563
65-74	2,830	1,825
75+	2,262	2,601
<b>ALL</b>	<b>8,814</b>	<b>7,986</b>

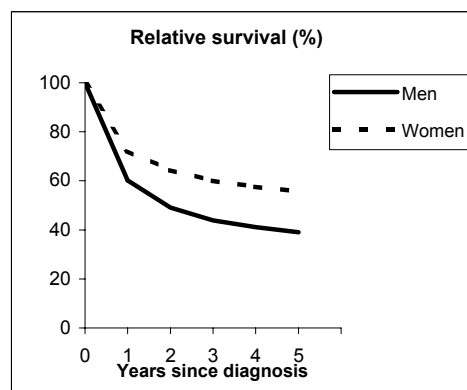


**Observed and Relative survival (%)**  
(in parenthesis 95% confidence limits of 5 years survival)

	Men		Women		ALL	
	<i>obs</i>	<i>rel</i>	<i>obs</i>	<i>rel</i>	<i>obs</i>	<i>rel</i>
1 year	59	61	72	74	65	67
3 years	38	43	55	61	46	52
<b>5 years</b>	<b>31</b>	<b>38</b>	<b>48</b>	<b>56</b>	<b>39</b>	<b>47</b>
95% CI	(30-32)	(37-40)	(47-49)	(55-58)	(38-40)	(46-48)

## VENETO - Incident cases 1990-'94

AGE CLASSES	Men	Women
15-44	1,387	1,958
45-54	2,575	2,806
55-64	6,255	4,122
65-74	8,594	5,623
75+	6,508	6,618
<b>ALL</b>	<b>25,319</b>	<b>21,127</b>



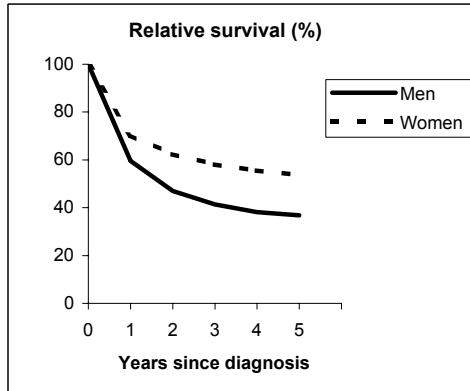
**Observed and Relative survival (%)**  
(in parenthesis 95% confidence limits of 5 years survival)

	Men		Women		ALL	
	<i>obs</i>	<i>rel</i>	<i>obs</i>	<i>rel</i>	<i>obs</i>	<i>rel</i>
1 year	58	60	70	72	64	66
3 years	39	44	55	60	46	51
<b>5 years</b>	<b>32</b>	<b>39</b>	<b>48</b>	<b>56</b>	<b>39</b>	<b>47</b>
95% CI	(31-32)	(38-40)	(47-49)	(55-57)	(39-39)	(46-47)

# ALL SITES BUT 173

## PARMA - Incident cases 1990-'94

AGE CLASSES	Men	Women
15-44	248	372
45-54	466	605
55-64	1,338	953
65-74	1,839	1,285
75+	1,796	1,730
<b>ALL</b>	<b>5,687</b>	<b>4,945</b>

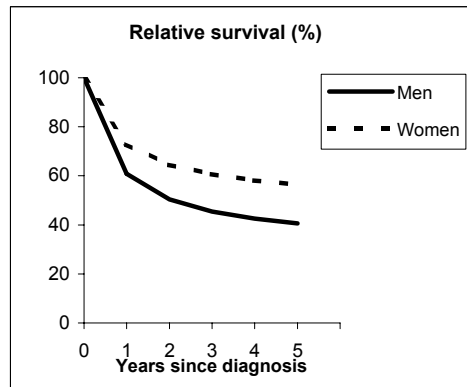


**Observed and Relative survival (%)**  
(in parenthesis 95% confidence limits of 5 years survival)

	Men		Women		ALL	
	<i>obs</i>	<i>rel</i>	<i>obs</i>	<i>rel</i>	<i>obs</i>	<i>rel</i>
1 year	57	60	68	70	62	65
3 years	36	41	53	58	44	49
<b>5 years</b>	<b>29</b>	<b>37</b>	<b>46</b>	<b>54</b>	<b>37</b>	<b>45</b>
95% CI	(28-30)	(35-38)	(44-47)	(52-55)	(36-38)	(44-46)

## MODENA - Incident cases 1990-'94

AGE CLASSES	Men	Women
15-44	349	631
45-54	667	874
55-64	1,823	1,370
65-74	2,847	1,852
75+	2,258	2,077
<b>ALL</b>	<b>7,944</b>	<b>6,804</b>



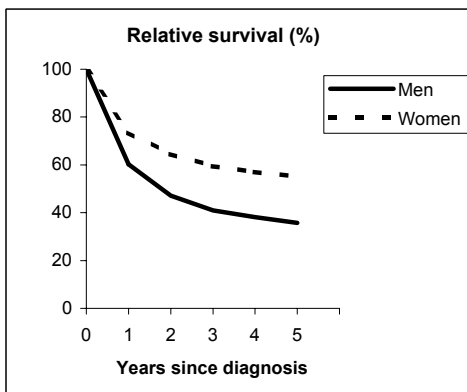
**Observed and Relative survival (%)**  
(in parenthesis 95% confidence limits of 5 years survival)

	Men		Women		ALL	
	<i>obs</i>	<i>rel</i>	<i>obs</i>	<i>rel</i>	<i>obs</i>	<i>rel</i>
1 year	59	61	71	73	64	66
3 years	40	45	56	61	48	53
<b>5 years</b>	<b>33</b>	<b>41</b>	<b>49</b>	<b>56</b>	<b>40</b>	<b>48</b>
95% CI	(32-34)	(39-42)	(48-50)	(55-58)	(40-41)	(47-49)

# ALL SITES BUT 173

## FERRARA - Incident cases 1990-'94

AGE CLASSES	Men	Women
15-44	217	363
45-54	390	557
55-64	1,212	935
65-74	1,829	1,292
75+	1,386	1,387
<b>ALL</b>	<b>5,034</b>	<b>4,534</b>

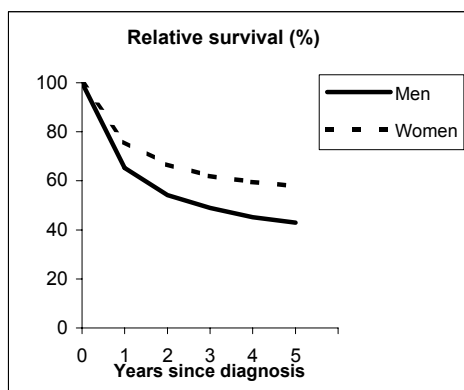


**Observed and Relative survival (%)**  
(in parenthesis 95% confidence limits of 5 years survival)

	Men		Women		ALL	
	<i>obs</i>	<i>rel</i>	<i>obs</i>	<i>rel</i>	<i>obs</i>	<i>rel</i>
1 year	58	60	72	74	64	67
3 years	36	41	55	59	45	50
<b>5 years</b>	<b>28</b>	<b>36</b>	<b>48</b>	<b>55</b>	<b>37</b>	<b>45</b>
95% CI	(27-30)	(34-37)	(46-49)	(54-57)	(36-38)	(44-47)

## ROMAGNA - Incident cases 1990-'94

AGE CLASSES	Men	Women
15-44	260	449
45-54	493	634
55-64	1,399	1,042
65-74	2,117	1,349
75+	2,081	1,807
<b>ALL</b>	<b>6,350</b>	<b>5,281</b>



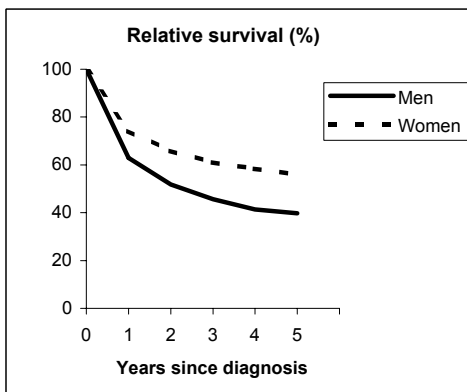
**Observed and Relative survival (%)**  
(in parenthesis 95% confidence limits of 5 years survival)

	Men		Women		ALL	
	<i>obs</i>	<i>rel</i>	<i>obs</i>	<i>rel</i>	<i>obs</i>	<i>rel</i>
1 year	63	65	74	76	68	70
3 years	44	49	58	62	50	55
<b>5 years</b>	<b>36</b>	<b>43</b>	<b>51</b>	<b>58</b>	<b>43</b>	<b>50</b>
95% CI	(35-37)	(42-44)	(50-53)	(56-59)	(42-44)	(49-51)

# ALL SITES BUT 173

## MACERATA - Incident cases 1991-'94

AGE CLASSES	Men	Women
15-44	120	216
45-54	216	270
55-64	611	454
65-74	1,053	632
75+	923	806
<b>ALL</b>	<b>2,923</b>	<b>2,378</b>

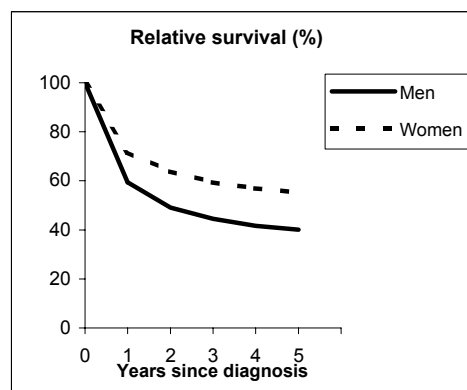


**Observed and Relative survival (%)**  
(in parenthesis 95% confidence limits of 5 years survival)

	Men		Women		ALL	
	<i>obs</i>	<i>rel</i>	<i>obs</i>	<i>rel</i>	<i>obs</i>	<i>rel</i>
1 year	60	63	72	74	66	68
3 years	40	46	56	61	47	53
<b>5 years</b>	<b>32</b>	<b>40</b>	<b>48</b>	<b>56</b>	<b>39</b>	<b>47</b>
95% CI	(30-34)	(38-42)	(46-50)	(54-58)	(38-40)	(46-49)

## FIRENZE-PRATO - Incident cases 1990-'94

AGE CLASSES	Men	Women
15-44	713	1,151
45-54	1,395	1,807
55-64	3,448	2,565
65-74	5,359	3,593
75+	4,709	4,713
<b>ALL</b>	<b>15,624</b>	<b>13,829</b>



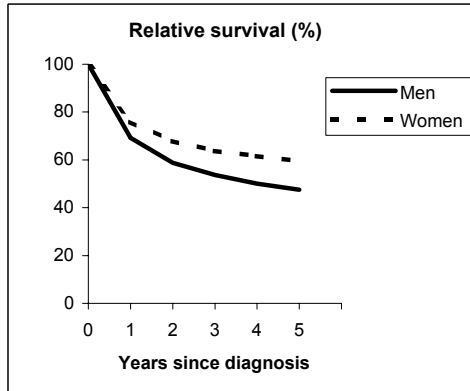
**Observed and Relative survival (%)**  
(in parenthesis 95% confidence limits of 5 years survival)

	Men		Women		ALL	
	<i>obs</i>	<i>rel</i>	<i>obs</i>	<i>rel</i>	<i>obs</i>	<i>rel</i>
1 year	57	59	70	72	63	65
3 years	39	45	54	59	46	52
<b>5 years</b>	<b>32</b>	<b>40</b>	<b>47</b>	<b>55</b>	<b>39</b>	<b>47</b>
95% CI	(31-33)	(39-41)	(46-48)	(54-56)	(39-40)	(47-48)

# ALL SITES BUT 173

## UMBRIA - Incident cases 1994-'96

AGE CLASSES	Men	Women
15-44	319	502
45-54	494	668
55-64	1,400	1,045
65-74	2,800	1,642
75+	2,199	1,719
<b>ALL</b>	<b>7,212</b>	<b>5,576</b>

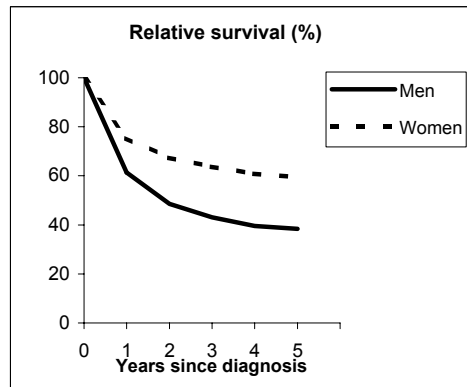


**Observed and Relative survival (%)**  
(in parenthesis 95% confidence limits of 5 years survival)

	Men		Women		ALL	
	<i>obs</i>	<i>rel</i>	<i>obs</i>	<i>rel</i>	<i>obs</i>	<i>rel</i>
1 year	67	69	74	76	70	72
3 years	47	54	58	64	52	58
<b>5 years</b>	<b>38</b>	<b>47</b>	<b>51</b>	<b>59</b>	<b>44</b>	<b>53</b>
95% CI	(37-39)	(46-49)	(49-52)	(58-61)	(43-45)	(52-54)

## LATINA - Incident cases 1990-'94

AGE CLASSES	Men	Women
15-44	203	289
45-54	319	359
55-64	789	526
65-74	935	559
75+	607	430
<b>ALL</b>	<b>2,853</b>	<b>2,163</b>



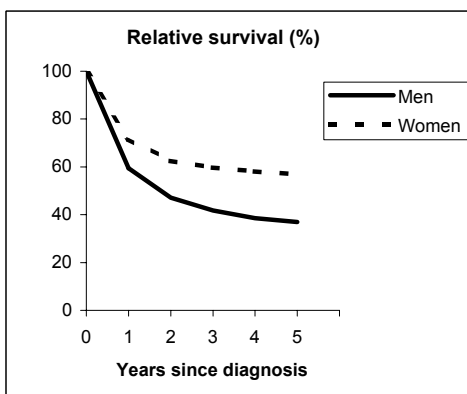
**Observed and Relative survival (%)**  
(in parenthesis 95% confidence limits of 5 years survival)

	Men		Women		ALL	
	<i>obs</i>	<i>rel</i>	<i>obs</i>	<i>rel</i>	<i>obs</i>	<i>rel</i>
1 year	59	61	74	75	66	67
3 years	39	43	60	64	48	52
<b>5 years</b>	<b>32</b>	<b>38</b>	<b>54</b>	<b>59</b>	<b>41</b>	<b>48</b>
95% CI	(30-34)	(36-40)	(51-56)	(57-62)	(40-43)	(46-49)

# ALL SITES BUT 173

## SASSARI - Incident cases 1992-'94

AGE CLASSES	Men	Women
15-44	180	248
45-54	260	310
55-64	584	421
65-74	826	537
75+	688	511
<b>ALL</b>	<b>2,538</b>	<b>2,027</b>

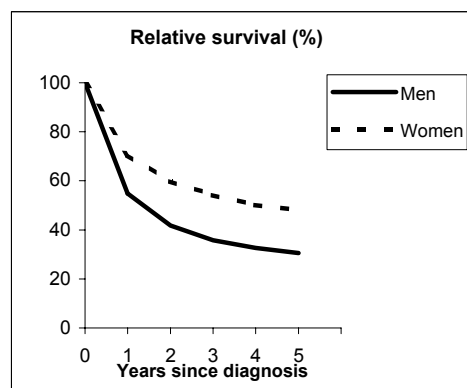


**Observed and Relative survival (%)**  
(in parenthesis 95% confidence limits of 5 years survival)

	Men		Women		ALL	
	<i>obs</i>	<i>rel</i>	<i>obs</i>	<i>rel</i>	<i>obs</i>	<i>rel</i>
1 year	57	59	70	72	63	65
3 years	37	42	55	60	45	50
<b>5 years</b>	<b>30</b>	<b>37</b>	<b>50</b>	<b>57</b>	<b>39</b>	<b>46</b>
95% CI	(28-32)	(35-39)	(48-52)	(54-59)	(37-40)	(45-48)

## RAGUSA - Incident cases 1990-'94

AGE CLASSES	Men	Women
15-44	118	205
45-54	196	215
55-64	448	431
65-74	674	489
75+	686	495
<b>ALL</b>	<b>2,122</b>	<b>1,835</b>

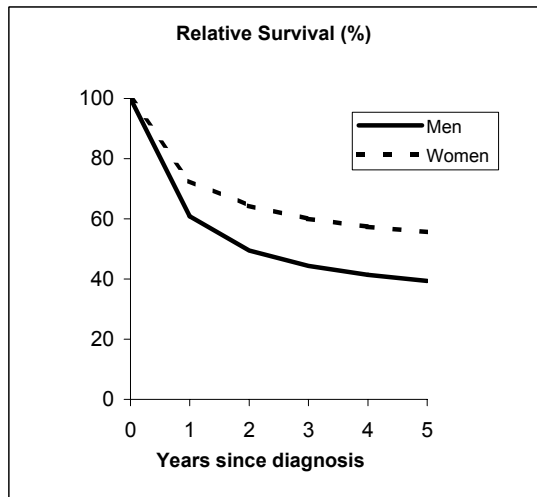


**Observed and Relative survival (%)**  
(in parenthesis 95% confidence limits of 5 years survival)

	Men		Women		ALL	
	<i>obs</i>	<i>rel</i>	<i>obs</i>	<i>rel</i>	<i>obs</i>	<i>rel</i>
1 year	53	55	69	71	60	62
3 years	31	36	50	54	40	45
<b>5 years</b>	<b>24</b>	<b>31</b>	<b>41</b>	<b>48</b>	<b>32</b>	<b>39</b>
95% CI	(23-26)	(28-33)	(39-44)	(45-51)	(31-34)	(37-41)

Pool of Italian Registries

REGISTRY	Number of cases		
	Men	Women	Total
Torino	10,321	9,645	19,966
Genova	9,917	8,555	18,472
Varese	8,814	7,986	16,800
Veneto	25,319	21,127	46,446
Parma	5,687	4,945	10,632
Modena	7,944	6,804	14,748
Ferrara	5,034	4,534	9,568
Romagna	6,350	5,281	11,631
Macerata	2,923	2,378	5,301
Firenze-Prato	15,624	13,829	29,453
Umbria	7,211	5,576	12,787
Latina	2,853	2,163	5,016
Sassari	2,538	2,027	4,565
Ragusa	2,122	1,835	3,957
<b>Italy</b>	<b>112,658</b>	<b>96,685</b>	<b>209,343</b>



Observed and relative survival (%) by sex and age classes

	15-44		45-54		55-64		65-74		75+		ALL	
	obs	rel	obs	rel	obs	rel	obs	rel	obs	rel	obs	rel
<b>Men</b>												
1 year	81	81	68	68	63	64	58	60	48	52	59	61
3 years	67	68	49	50	44	46	39	43	27	36	39	44
<b>5 years</b>	<b>63</b>	<b>63</b>	<b>44</b>	<b>45</b>	<b>37</b>	<b>40</b>	<b>31</b>	<b>38</b>	<b>18</b>	<b>31</b>	<b>32</b>	<b>39</b>
95% CI	(62-64)	(62-65)	(43-45)	(44-46)	(37-38)	(39-41)	(31-32)	(37-38)	(18-19)	(31-32)	(32-32)	(39-40)
<b>Women</b>												
1 year	92	92	88	88	81	81	71	72	51	55	71	73
3 years	82	82	76	77	66	68	54	57	33	41	55	60
<b>5 years</b>	<b>76</b>	<b>77</b>	<b>70</b>	<b>71</b>	<b>60</b>	<b>62</b>	<b>47</b>	<b>51</b>	<b>24</b>	<b>36</b>	<b>48</b>	<b>56</b>
95% CI	(75-77)	(76-78)	(70-71)	(71-72)	(59-61)	(61-63)	(46-48)	(51-52)	(24-25)	(36-37)	(48-48)	(55-56)
<b>Total</b>												
1 year	88	88	79	79	70	71	63	65	49	54	64	66
3 years	76	77	64	65	53	55	45	49	30	38	47	52
<b>5 years</b>	<b>71</b>	<b>71</b>	<b>58</b>	<b>60</b>	<b>47</b>	<b>49</b>	<b>38</b>	<b>43</b>	<b>21</b>	<b>34</b>	<b>39</b>	<b>47</b>
95% CI	(70-72)	(71-72)	(58-59)	(59-60)	(46-47)	(49-50)	(37-38)	(43-44)	(21-22)	(34-35)	(39-40)	(47-47)

Five Years Age-adjusted Relative Survival of 1986-89 and 1990-94 incident cases

Men and Women

