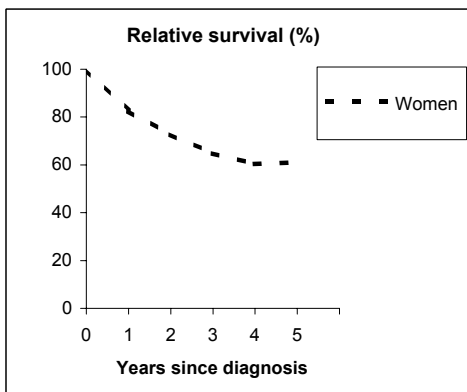


CERVIX UTERI (ICD-IX 180)

TORINO - Incident cases 1990-'94

AGE CLASSES	Women
15-44	54
45-54	48
55-64	68
65-74	70
75+	65
ALL	305

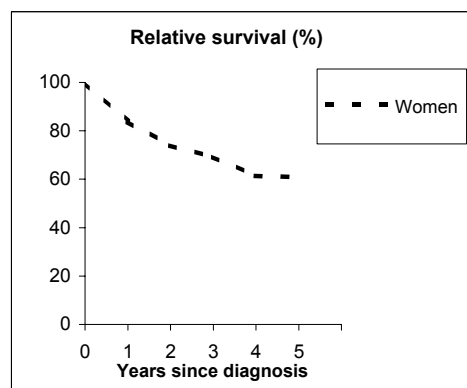


Observed and Relative survival (%)
(in parenthesis 95% confidence limits of 5 years survival)

	Men		Women		ALL	
	obs	rel	obs	rel	obs	rel
1 year	-	-	81	83	81	83
3 years	-	-	61	65	61	65
5 years	-	-	55	61	55	61
95% CI	-	-	(49-60)	(55-67)	(49-60)	(55-67)

GENOVA - Incident cases 1990-'94

AGE CLASSES	Women
15-44	42
45-54	37
55-64	43
65-74	55
75+	54
ALL	231



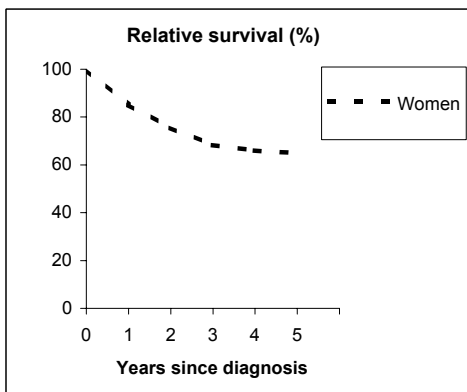
Observed and Relative survival (%)
(in parenthesis 95% confidence limits of 5 years survival)

	Men		Women		ALL	
	obs	rel	obs	rel	obs	rel
1 year	-	-	82	84	82	84
3 years	-	-	65	69	65	69
5 years	-	-	54	61	54	61
95% CI	-	-	(48-61)	(54-68)	(48-61)	(54-68)

CERVIX UTERI (ICD-IX 180)

VARESE - Incident cases 1990-'94

AGE CLASSES	Women
15-44	59
45-54	39
55-64	33
65-74	26
75+	31
ALL	188

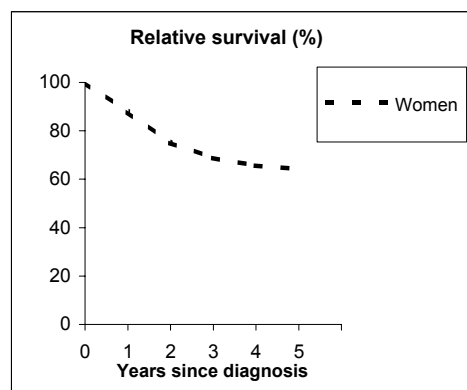


Observed and Relative survival (%)
(in parenthesis 95% confidence limits of 5 years survival)

	Men		Women		ALL	
	obs	rel	obs	rel	obs	rel
1 year	-	-	84	85	84	85
3 years	-	-	65	68	65	68
5 years	-	-	60	65	60	65
95% CI	-	-	(53-67)	(57-72)	(53-67)	(57-72)

VENETO - Incident cases 1990-'94

AGE CLASSES	Women
15-44	89
45-54	69
55-64	84
65-74	86
75+	77
ALL	405



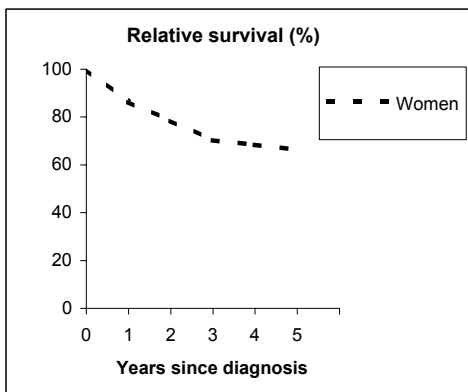
Observed and Relative survival (%)
(in parenthesis 95% confidence limits of 5 years survival)

	Men		Women		ALL	
	obs	rel	obs	rel	obs	rel
1 year	-	-	86	88	86	88
3 years	-	-	65	69	65	69
5 years	-	-	59	64	59	64
95% CI	-	-	(54-64)	(59-69)	(54-64)	(59-69)

CERVIX UTERI (ICD-IX 180)

PARMA - Incident cases 1990-'94

AGE CLASSES	Women
15-44	24
45-54	21
55-64	21
65-74	16
75+	19
ALL	101

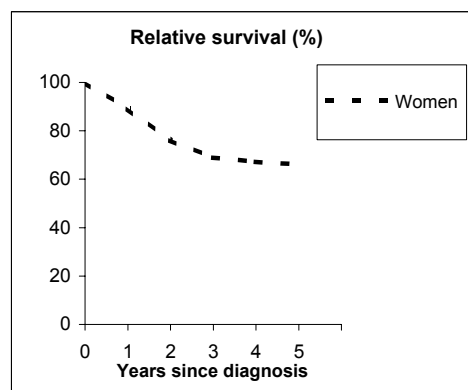


Observed and Relative survival (%)
(in parenthesis 95% confidence limits of 5 years survival)

	Men		Women		ALL	
	obs	rel	obs	rel	obs	rel
1 year	-	-	85	86	85	86
3 years	-	-	67	70	67	70
5 years	-	-	61	66	61	66
95% CI	-	-	(52-70)	(56-76)	(52-70)	(56-76)

MODENA - Incident cases 1990-'94

AGE CLASSES	Women
15-44	40
45-54	27
55-64	29
65-74	27
75+	30
ALL	153



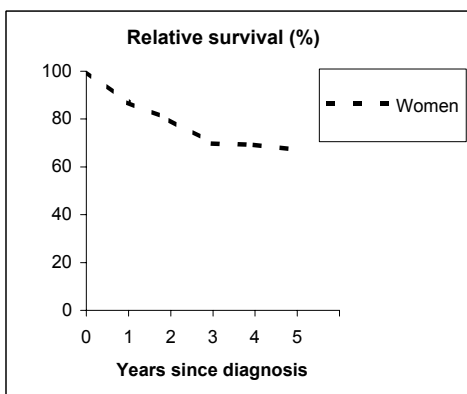
Observed and Relative survival (%)
(in parenthesis 95% confidence limits of 5 years survival)

	Men		Women		ALL	
	obs	rel	obs	rel	obs	rel
1 year	-	-	88	89	88	89
3 years	-	-	66	69	66	69
5 years	-	-	61	66	61	66
95% CI	-	-	(53-69)	(57-74)	(53-69)	(57-74)

CERVIX UTERI (ICD-IX 180)

FERRARA - Incident cases 1990-'94

AGE CLASSES	Women
15-44	17
45-54	20
55-64	19
65-74	25
75+	22
ALL	103

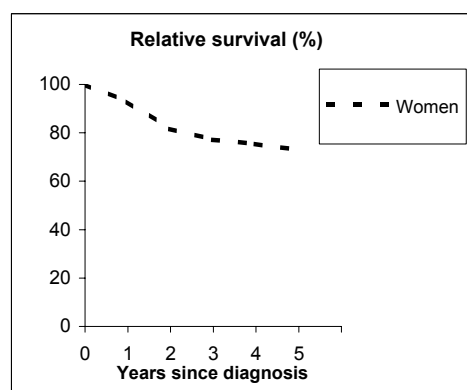


Observed and Relative survival (%)
(in parenthesis 95% confidence limits of 5 years survival)

	Men		Women		ALL	
	obs	rel	obs	rel	obs	rel
1 year	-	-	85	87	85	87
3 years	-	-	66	70	66	70
5 years	-	-	61	67	61	67
95% CI	-	-	(51-70)	(56-77)	(51-70)	(56-77)

ROMAGNA - Incident cases 1990-'94

AGE CLASSES	Women
15-44	34
45-54	25
55-64	46
65-74	38
75+	38
ALL	181



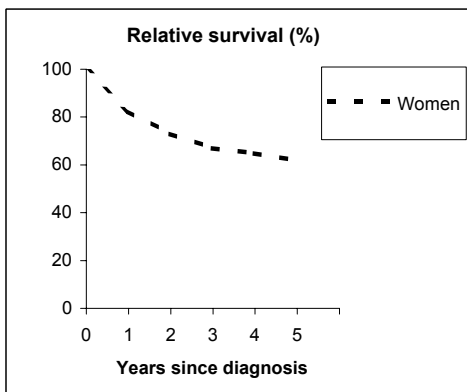
Observed and Relative survival (%)
(in parenthesis 95% confidence limits of 5 years survival)

	Men		Women		ALL	
	obs	rel	obs	rel	obs	rel
1 year	-	-	92	93	92	93
3 years	-	-	74	77	74	77
5 years	-	-	68	73	68	73
95% CI	-	-	(61-74)	(65-80)	(61-74)	(65-80)

CERVIX UTERI (ICD-IX 180)

FIRENZE-PRATO - Incident cases 1990-'94

AGE CLASSES	Women
15-44	76
45-54	44
55-64	54
65-74	66
75+	55
ALL	295

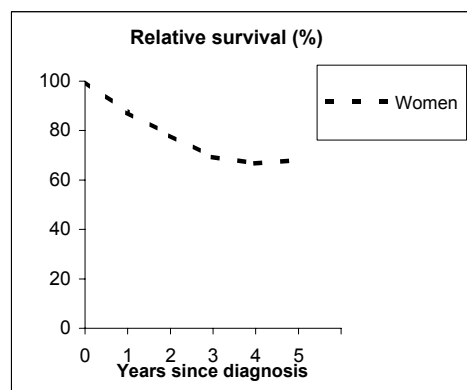


Observed and Relative survival (%)
(in parenthesis 95% confidence limits of 5 years survival)

	Men		Women		ALL	
	obs	rel	obs	rel	obs	rel
1 year	-	-	81	82	81	82
3 years	-	-	64	67	64	67
5 years	-	-	57	62	57	62
95% CI	-	-	(51-62)	(55-68)	(51-62)	(55-68)

UMBRIA - Incident cases 1994-'96

AGE CLASSES	Women
15-44	27
45-54	20
55-64	20
65-74	30
75+	18
ALL	115



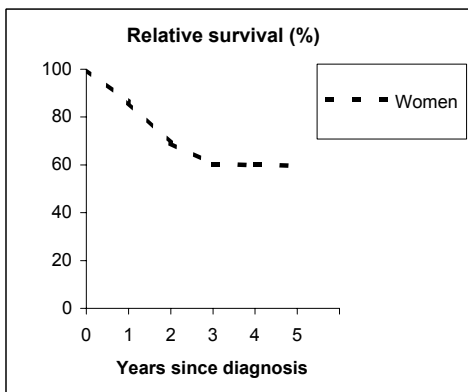
Observed and Relative survival (%)
(in parenthesis 95% confidence limits of 5 years survival)

	Men		Women		ALL	
	obs	rel	obs	rel	obs	rel
1 year	-	-	86	87	86	87
3 years	-	-	66	69	66	69
5 years	-	-	62	68	62	68
95% CI	-	-	(53-71)	(58-77)	(53-71)	(58-77)

CERVIX UTERI (ICD-IX 180)

LATINA - Incident cases 1990-'94

AGE CLASSES	Women
15-44	12
45-54	11
55-64	20
65-74	17
75+	12
ALL	72

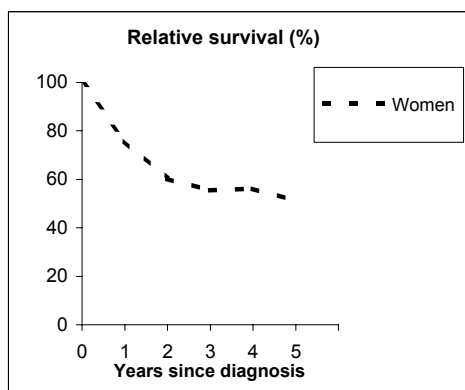


Observed and Relative survival (%)
(in parenthesis 95% confidence limits of 5 years survival)

	Men		Women		ALL	
	obs	rel	obs	rel	obs	rel
1 year	-	-	85	86	85	86
3 years	-	-	57	60	57	60
5 years	-	-	54	60	54	60
95% CI	-	-	(43-65)	(47-72)	(43-65)	(47-72)

SASSARI - Incident cases 1992-'94

AGE CLASSES	Women
15-44	14
45-54	14
55-64	18
65-74	6
75+	4
ALL	56



Observed and Relative survival (%)
(in parenthesis 95% confidence limits of 5 years survival)

	Men		Women		ALL	
	obs	rel	obs	rel	obs	rel
1 year	-	-	75	76	75	76
3 years	-	-	54	55	54	55
5 years	-	-	48	51	48	51
95% CI	-	-	(36-61)	(38-65)	(36-61)	(38-65)

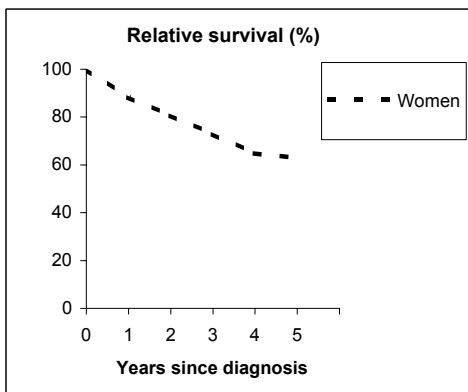
CERVIX UTERI (ICD-IX 180)

RAGUSA - Incident cases 1990-'94

AGE CLASSES

15-44
45-54
55-64
65-74
75+
ALL

Women
13
12
18
17
9
69



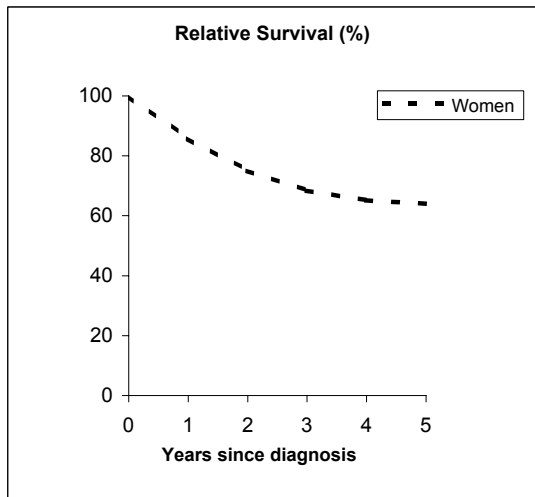
Observed and Relative survival (%)
(in parenthesis 95% confidence limits of 5 years survival)

	<i>Men</i>		<i>Women</i>		ALL	
	<i>obs</i>	<i>rel</i>	<i>obs</i>	<i>rel</i>	<i>obs</i>	<i>rel</i>
1 year	-	-	87	88	87	88
3 years	-	-	70	73	70	73
5 years	-	-	58	63	58	63
95% CI	-	-	(46-69)	(50-75)	(46-69)	(50-75)

CERVIX UTERI (ICD-IX 180)

Pool of Italian Registries

REGISTRY	Number of cases Women
Torino	305
Genova	231
Varese	188
Veneto	405
Parma	101
Modena	153
Ferrara	103
Romagna	181
Macerata	36
Firenze-Prato	295
Umbria	115
Latina	72
Sassari	56
Ragusa	69
Italy	2,310



Observed and relative survival (%) by sex and age classes

	15-44		45-54		55-64		65-74		75+		ALL	
	obs	rel	obs	rel	obs	rel	obs	rel	obs	rel	obs	rel
Men												
1 year	-	-	-	-	-	-	-	-	-	-	-	-
3 years	-	-	-	-	-	-	-	-	-	-	-	-
5 years	-	-	-	-	-	-	-	-	-	-	-	-
95% CI	-	-	-	-	-	-	-	-	-	-	-	-
Women												
1 year	95	95	90	90	90	90	85	86	61	65	84	86
3 years	83	83	73	73	73	74	62	65	31	38	65	68
5 years	78	78	69	70	67	69	52	56	24	34	59	64
95% CI	(74-81)	(75-82)	(65-74)	(66-75)	(63-71)	(65-73)	(47-56)	(51-61)	(20-28)	(29-40)	(57-61)	(62-66)
Total												
1 year	95	95	90	90	90	90	85	86	61	65	84	86
3 years	83	83	73	73	73	74	62	65	31	38	65	68
5 years	78	78	69	70	67	69	52	56	24	34	59	64
95% CI	(74-81)	(75-82)	(65-74)	(66-75)	(63-71)	(65-73)	(47-56)	(51-61)	(20-28)	(29-40)	(57-61)	(62-66)

Five Years Age-adjusted Relative Survival of 1986-89 and 1990-94 incident cases

