

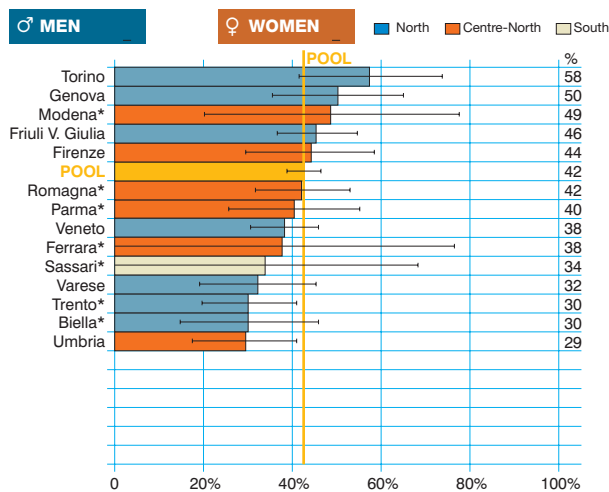


Tongue cancer  
(ICD-10 = C01-02)  
Tumore della lingua

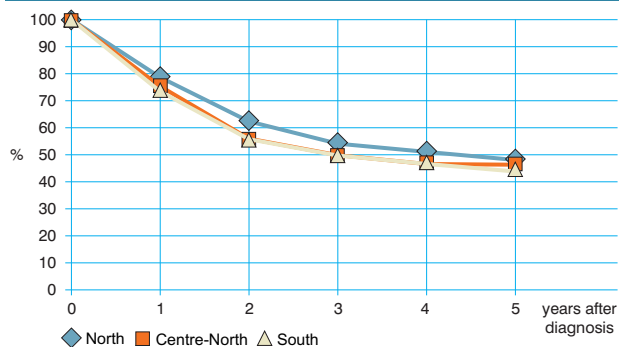
Observed and relative survival (%) by sex and age. Data from the Pool of Italian Cancer Registries follow-up 31.12.2003

	15-44		45-54		55-64		65-74		75+		ALL	
	obs	rel	obs	rel	obs	rel	obs	rel	obs	rel	obs	rel
<b>♂ MEN (n)</b>	<b>(95)</b>		<b>(209)</b>		<b>(370)</b>		<b>(341)</b>		<b>(172)</b>		<b>(1 187)</b>	
1 year	87	88	77	77	78	79	73	75	59	65	74	76
3 years	67	68	50	51	55	57	44	49	30	40	48	52
<b>5 years</b>	<b>65</b>	<b>66</b>	<b>44</b>	<b>45</b>	<b>44</b>	<b>47</b>	<b>36</b>	<b>43</b>	<b>20</b>	<b>34</b>	<b>40</b>	<b>46</b>
95% CI	(55-75)	(56-75)	(37-51)	(38-52)	(39-49)	(41-52)	(31-41)	(37-49)	(14-26)	(24-44)	(37-43)	(43-49)
<b>♀ WOMEN (n)</b>	<b>(38)</b>		<b>(56)</b>		<b>(90)</b>		<b>(148)</b>		<b>(152)</b>		<b>(484)</b>	
1 year	87	87	88	88	86	86	83	84	68	74	80	82
3 years	58	58	71	72	70	71	63	65	40	49	57	62
<b>5 years</b>	<b>58</b>	<b>58</b>	<b>64</b>	<b>65</b>	<b>64</b>	<b>66</b>	<b>56</b>	<b>60</b>	<b>31</b>	<b>46</b>	<b>51</b>	<b>59</b>
95% CI	(42-74)	(42-74)	(52-77)	(52-78)	(54-74)	(56-76)	(47-64)	(51-69)	(24-39)	(35-57)	(46-55)	(53-64)
<b>ALL (n)</b>	<b>(133)</b>		<b>(265)</b>		<b>(460)</b>		<b>(489)</b>		<b>(324)</b>		<b>(1 671)</b>	
1 year	87	87	79	80	79	70	76	78	64	69	76	78
3 years	65	65	55	55	58	60	50	54	34	44	51	55
<b>5 years</b>	<b>63</b>	<b>63</b>	<b>48</b>	<b>49</b>	<b>48</b>	<b>51</b>	<b>42</b>	<b>48</b>	<b>26</b>	<b>40</b>	<b>43</b>	<b>50</b>
95% CI	(55-71)	(55-72)	(42-54)	(43-55)	(44-53)	(46-56)	(38-46)	(43-53)	(21-30)	(32-48)	(41-46)	(47-52)

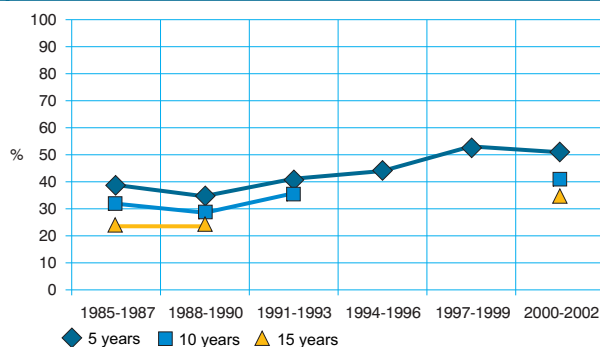
Five-year age-standardised relative survival



Relative survival by Italian Areas



Trend of relative survival Pool of some Italian Registries



→ Ulteriori dati sono disponibili presso: [www.registri-tumori.it](http://www.registri-tumori.it)