



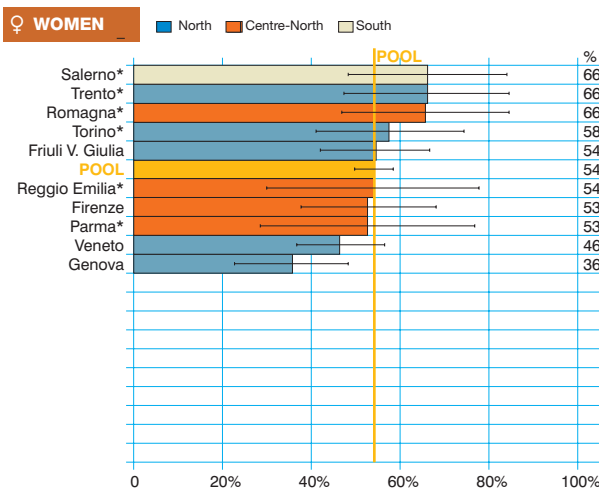
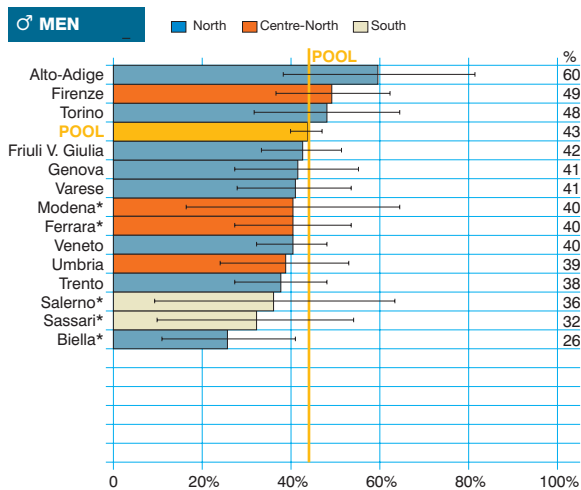
Oral cavity cancer  
(ICD-10 = C03-06)

Tumore della bocca

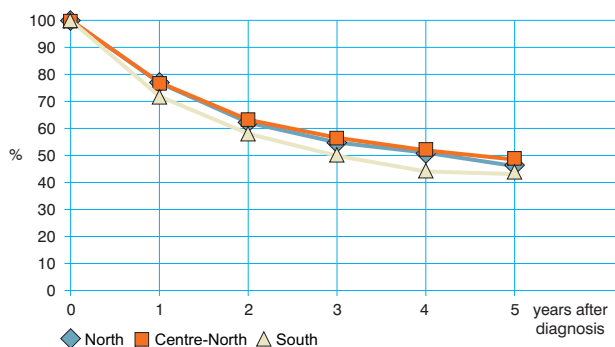
Observed and relative survival (%) by sex and age. Data from the Pool of Italian Cancer Registries follow-up 31.12.2003

	15-44		45-54		55-64		65-74		75+		ALL	
	obs	rel	obs	rel	obs	rel	obs	rel	obs	rel	obs	rel
<b>♂ MEN (n)</b>	<b>(88)</b>		<b>(263)</b>		<b>(436)</b>		<b>(430)</b>		<b>(211)</b>		<b>(1 428)</b>	
1 year	91	91	83	83	81	82	73	75	61	67	77	79
3 years	63	64	55	56	58	60	47	52	33	44	51	55
<b>5 years</b>	<b>59</b>	<b>59</b>	<b>44</b>	<b>45</b>	<b>48</b>	<b>51</b>	<b>35</b>	<b>41</b>	<b>22</b>	<b>36</b>	<b>40</b>	<b>46</b>
95% CI	(48-69)	(48-70)	(37-50)	(38-51)	(43-53)	(46-56)	(30-39)	(36-46)	(16-27)	(26-45)	(37-42)	(43-49)
<b>♀ WOMEN (n)</b>	<b>(56)</b>		<b>(61)</b>		<b>(126)</b>		<b>(183)</b>		<b>(231)</b>		<b>(657)</b>	
1 year	95	95	84	84	85	85	80	81	59	65	75	78
3 years	75	75	64	64	65	66	56	59	39	52	54	60
<b>5 years</b>	<b>73</b>	<b>73</b>	<b>62</b>	<b>63</b>	<b>61</b>	<b>62</b>	<b>46</b>	<b>49</b>	<b>28</b>	<b>46</b>	<b>46</b>	<b>55</b>
95% CI	(61-84)	(61-85)	(50-74)	(51-75)	(53-70)	(54-71)	(38-53)	(42-57)	(22-34)	(36-55)	(42-50)	(51-60)
<b>ALL (n)</b>	<b>(144)</b>		<b>(324)</b>		<b>(562)</b>		<b>(613)</b>		<b>(442)</b>		<b>(2 085)</b>	
1 year	92	92	83	83	82	78	75	77	60	66	76	79
3 years	68	68	57	57	60	62	50	54	36	48	52	57
<b>5 years</b>	<b>64</b>	<b>65</b>	<b>47</b>	<b>48</b>	<b>51</b>	<b>54</b>	<b>38</b>	<b>44</b>	<b>25</b>	<b>41</b>	<b>42</b>	<b>49</b>
95% CI	(56-72)	(56-73)	(42-53)	(42-54)	(47-55)	(49-58)	(34-42)	(39-48)	(21-29)	(34-48)	(40-44)	(46-51)

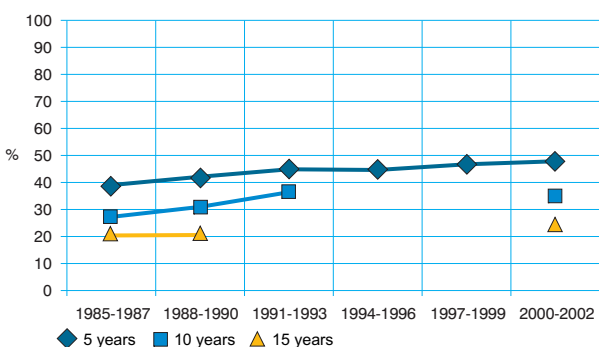
Five-year age-standardised relative survival



Relative survival by Italian Areas



Trend of relative survival Pool of some Italian Registries



➔ Ulteriori dati sono disponibili presso: [www.registri-tumori.it](http://www.registri-tumori.it)