



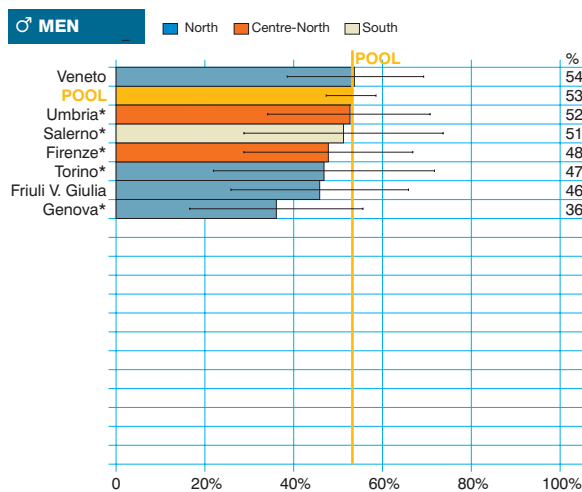
Salivary gland cancer (ICD-10 = C07-08)

Tumore delle ghiandole salivari

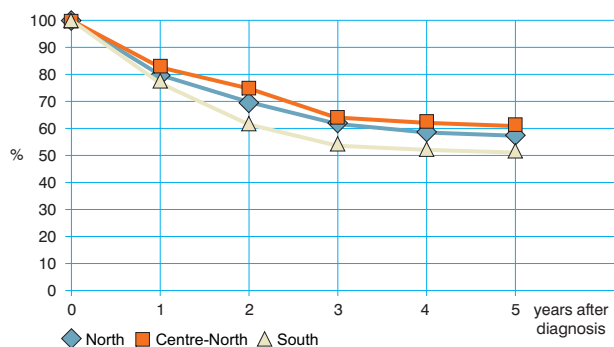
Observed and relative survival (%) by sex and age. Data from the Pool of Italian Cancer Registries follow-up 31.12.2003

	15-44		45-54		55-64		65-74		75+		ALL	
	obs	rel	obs	rel	obs	rel	obs	rel	obs	rel	obs	rel
♂ MEN (n)	(58)		(61)		(88)		(116)		(116)		(439)	
1 year	95	95	93	94	88	88	72	74	58	64	77	80
3 years	90	90	72	73	68	71	47	51	30	41	56	62
5 years	86	86	62	64	61	65	40	48	21	35	48	58
95% CI	(77-95)	(77-96)	(50-74)	(51-76)	(51-71)	(54-76)	(31-49)	(37-58)	(13-28)	(22-48)	(44-53)	(52-64)
♀ WOMEN (n)	(57)		(35)		(53)		(77)		(111)		(333)	
1 year	100	100	97	97	91	91	84	86	64	70	83	86
3 years	95	95	83	83	77	78	69	72	34	45	65	72
5 years	93	93	77	78	76	77	63	69	29	42	60	70
95% CI	(86-100)	(87-100)	(63-91)	(64-92)	(64-87)	(65-89)	(53-74)	(57-80)	(21-37)	(28-56)	(55-66)	(64-76)
ALL (n)	(115)		(96)		(141)		(193)		(227)		(772)	
1 year	97	97	95	95	89	93	77	78	61	67	80	82
3 years	92	92	76	77	72	74	55	59	32	43	60	66
5 years	89	90	68	69	67	70	50	56	25	40	54	64
95% CI	(84-95)	(84-96)	(58-77)	(59-78)	(59-74)	(61-78)	(43-57)	(48-64)	(19-30)	(31-50)	(50-57)	(60-68)

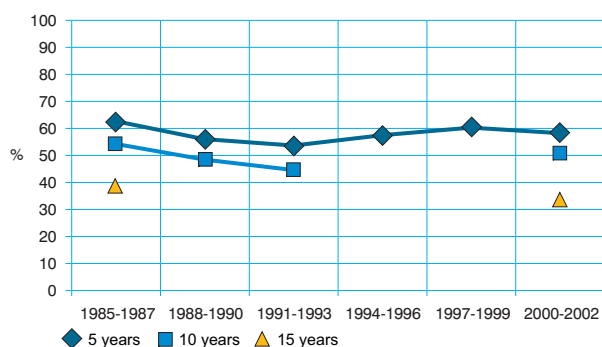
Five-year age-standardised relative survival



Relative survival by Italian Areas



Trend of relative survival Pool of some Italian Registries



→ Ulteriori dati sono disponibili presso: www.registri-tumori.it