



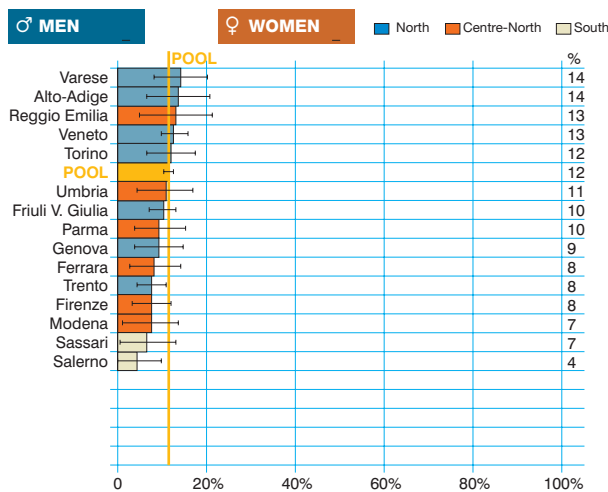
## Oesophagus cancer (ICD-10 = C15)

Tumore dell'esofago

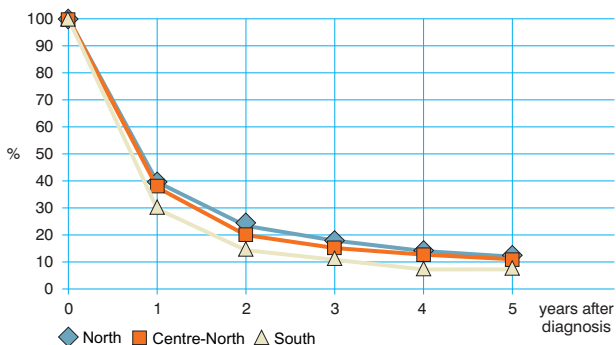
Observed and relative survival (%) by sex and age. Data from the Pool of Italian Cancer Registries follow-up 31.12.2003

	15-44		45-54		55-64		65-74		75+		ALL	
	obs	rel	obs	rel	obs	rel	obs	rel	obs	rel	obs	rel
<b>♂ MEN (n)</b>	<b>(57)</b>		<b>(317)</b>		<b>(671)</b>		<b>(809)</b>		<b>(555)</b>		<b>(2409)</b>	
1 year	40	40	50	51	43	43	36	37	26	29	38	39
3 years	18	18	20	20	20	21	14	15	8	11	15	17
<b>5 years</b>	<b>14</b>	<b>14</b>	<b>13</b>	<b>14</b>	<b>13</b>	<b>14</b>	<b>10</b>	<b>11</b>	<b>3</b>	<b>5</b>	<b>9</b>	<b>11</b>
95% CI	(5-23)	(5-23)	(10-17)	(10-18)	(10-15)	(11-16)	(8-11)	(9-14)	(1-4)	(2-7)	(8-11)	(10-13)
<b>♀ WOMEN (n)</b>	<b>(13)</b>		<b>(52)</b>		<b>(102)</b>		<b>(199)</b>		<b>(353)</b>		<b>(719)</b>	
1 year	46	46	44	44	55	55	45	46	26	29	37	39
3 years	39	39	27	27	25	25	21	22	6	8	15	17
<b>5 years</b>	<b>39</b>	<b>39</b>	<b>21</b>	<b>21</b>	<b>21</b>	<b>22</b>	<b>14</b>	<b>15</b>	<b>4</b>	<b>7</b>	<b>11</b>	<b>14</b>
95% CI	(12-65)	(12-65)	(10-32)	(10-33)	(13-29)	(14-30)	(9-18)	(10-20)	(2-6)	(3-10)	(9-13)	(11-17)
<b>ALL (n)</b>	<b>(70)</b>		<b>(369)</b>		<b>(773)</b>		<b>(1008)</b>		<b>(908)</b>		<b>(3128)</b>	
1 year	41	42	50	50	44	24	38	39	26	29	38	39
3 years	21	22	21	21	21	21	15	16	7	10	15	17
<b>5 years</b>	<b>19</b>	<b>19</b>	<b>14</b>	<b>15</b>	<b>14</b>	<b>15</b>	<b>10</b>	<b>12</b>	<b>3</b>	<b>6</b>	<b>10</b>	<b>12</b>
95% CI	(10-28)	(9-28)	(11-18)	(11-18)	(11-16)	(12-17)	(8-12)	(10-14)	(2-4)	(4-7)	(9-11)	(11-13)

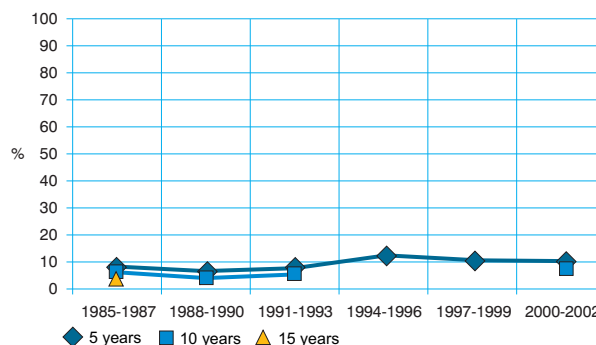
### Five-year age-standardised relative survival



### Relative survival by Italian Areas



### Trend of relative survival Pool of some Italian Registries



→ Ulteriori dati sono disponibili presso: [www.registri-tumori.it](http://www.registri-tumori.it)