

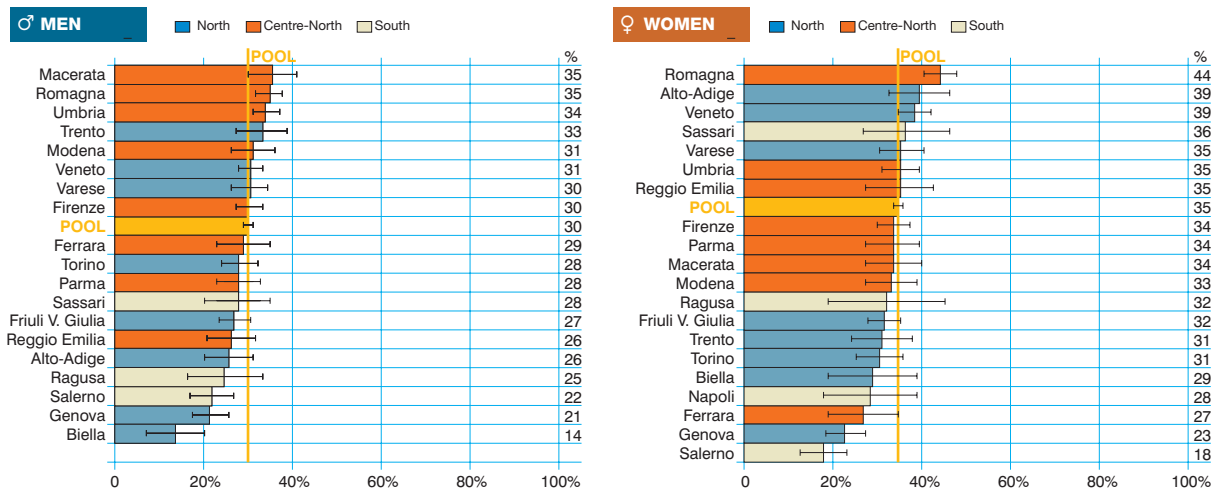
Stomach cancer
ICD-10 = C16)

Tumore dello stomaco

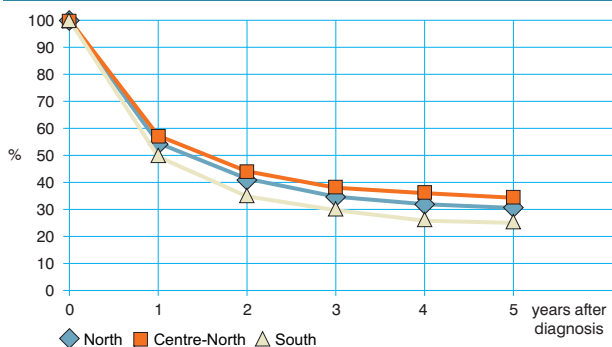
Observed and relative survival (%) by sex and age. Data from the Pool of Italian Cancer Registries follow-up 31.12.2003

	15-44		45-54		55-64		65-74		75+		ALL	
	obs	rel	obs	rel	obs	rel	obs	rel	obs	rel	obs	rel
♂ MEN (n)	(356)		(911)		(2 396)		(4 273)		(4 673)		(12 609)	
1 year	68	68	66	66	59	60	52	54	36	40	49	52
3 years	47	47	45	46	38	39	31	34	17	23	29	33
5 years	42	42	40	41	31	33	25	29	12	20	23	29
95% CI	(37-47)	(37-47)	(37-43)	(37-44)	(29-33)	(31-35)	(23-26)	(28-31)	(11-13)	(19-22)	(22-23)	(28-30)
♀ WOMEN (n)	(307)		(540)		(1 178)		(2 439)		(5 032)		(9 496)	
1 year	72	72	71	71	64	64	57	58	40	43	50	53
3 years	49	49	51	51	44	45	38	39	21	27	31	35
5 years	44	44	43	44	39	40	32	35	15	24	25	32
95% CI	(38-49)	(38-50)	(39-47)	(39-48)	(36-42)	(37-43)	(30-34)	(33-37)	(14-16)	(22-25)	(24-26)	(31-33)
ALL (n)	(663)		(1 451)		(3 574)		(6 712)		(9 705)		(22 105)	
1 year	70	70	68	68	61	55	54	55	38	42	50	52
3 years	48	48	48	48	40	41	34	36	19	25	30	34
5 years	43	43	41	42	34	36	27	31	14	22	24	30
95% CI	(39-46)	(39-47)	(39-44)	(39-44)	(32-35)	(34-37)	(26-28)	(30-32)	(13-14)	(21-24)	(23-24)	(30-31)

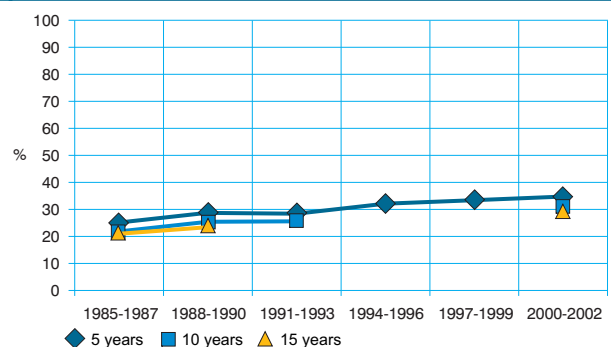
Five-year age-standardised relative survival



Relative survival by Italian Areas



Trend of relative survival Pool of some Italian Registries



➔ Ulteriori dati sono disponibili presso: www.registri-tumori.it