

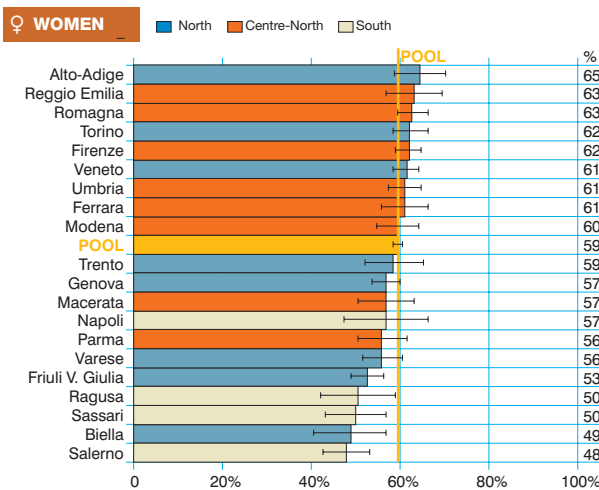
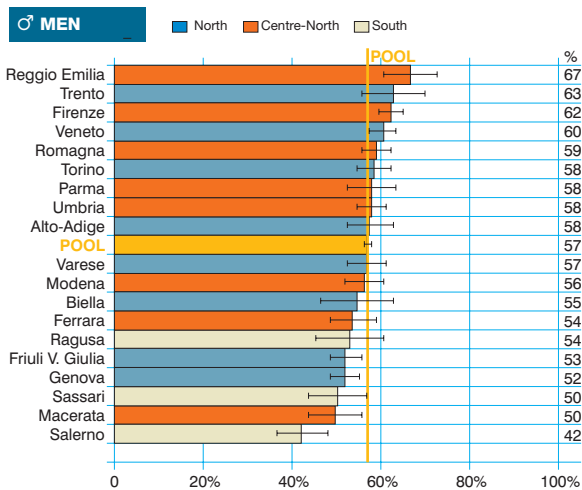
Left Colon cancer (ICD-10 = C18.5-18.7,19-20)

Tumore del colon sinistro

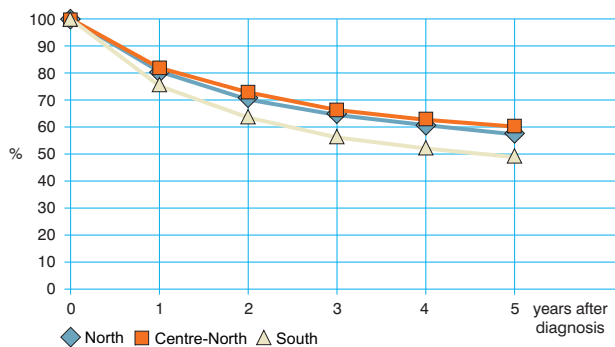
Observed and relative survival (%) by sex and age. Data from the Pool of Italian Cancer Registries follow-up 31.12.2003

	15-44		45-54		55-64		65-74		75+		ALL	
	obs	rel	obs	rel	obs	rel	obs	rel	obs	rel	obs	rel
♂ MEN (n)	(364)		(1 364)		(3 770)		(5 939)		(5 026)		(16 463)	
1 year	83	83	86	87	85	86	80	82	66	72	77	80
3 years	69	70	69	69	67	69	60	66	42	56	57	65
5 years	63	63	62	63	57	61	49	58	29	49	46	57
95% CI	(58-68)	(58-68)	(59-64)	(60-66)	(56-59)	(59-63)	(48-59)	(56-59)	(28-30)	(47-52)	(45-47)	(56-58)
♀ WOMEN (n)	(406)		(1 180)		(2 447)		(3 893)		(5 216)		(13 142)	
1 year	87	87	89	89	88	89	83	84	66	70	78	80
3 years	70	70	72	72	73	74	65	68	43	54	59	65
5 years	61	61	63	64	65	67	57	62	33	49	50	59
95% CI	(56-66)	(57-66)	(60-66)	(61-67)	(63-67)	(65-69)	(56-59)	(60-64)	(31-34)	(47-50)	(49-50)	(58-60)
ALL (n)	(770)		(2 544)		(6 217)		(9 832)		(10 242)		(29 605)	
1 year	85	85	87	88	86	86	81	83	66	71	77	80
3 years	70	70	70	71	69	71	62	67	42	55	58	65
5 years	62	62	62	63	60	63	52	60	31	49	48	58
95% CI	(58-65)	(59-66)	(60-64)	(61-65)	(59-61)	(62-64)	(51-53)	(58-61)	(30-32)	(48-50)	(47-48)	(57-59)

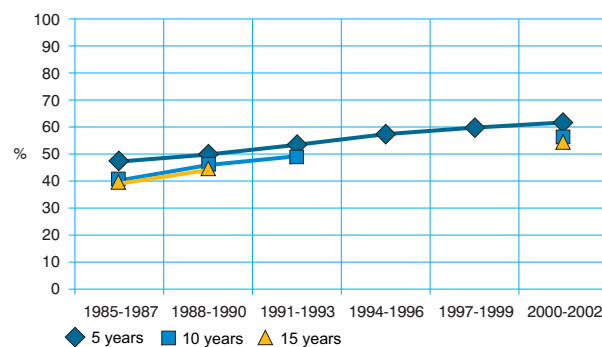
Five-year age-standardised relative survival



Relative survival by Italian Areas



Trend of relative survival Pool of some Italian Registries



➔ Ulteriori dati sono disponibili presso: www.registri-tumori.it