

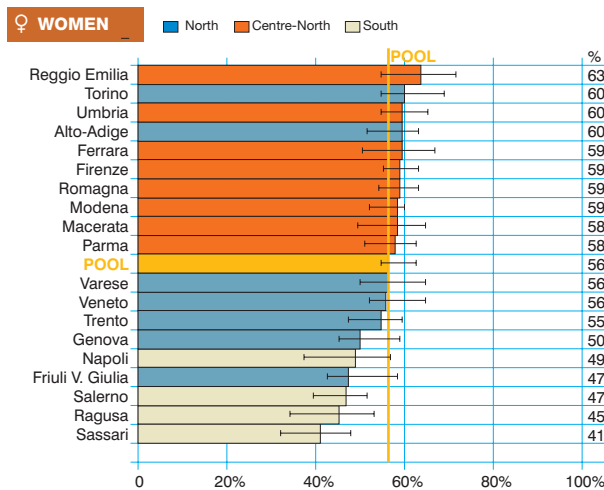
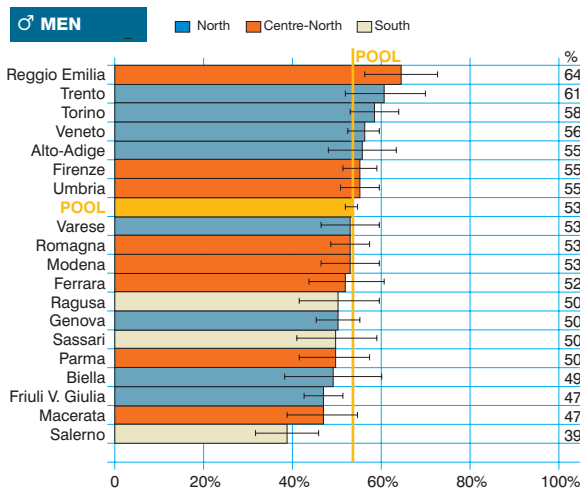
Rectal cancer
(ICD-10 = C19-21)

Tumore del retto

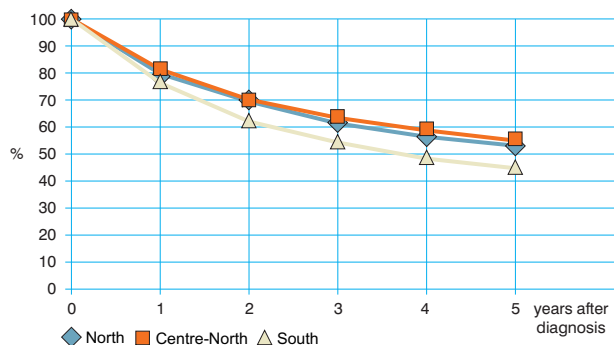
Observed and relative survival (%) by sex and age. Data from the Pool of Italian Cancer Registries follow-up 31.12.2003

	15-44		45-54		55-64		65-74		75+		ALL	
	obs	rel	obs	rel	obs	rel	obs	rel	obs	rel	obs	rel
♂ MEN (n)	(226)		(805)		(2 104)		(3 020)		(2 611)		(8 766)	
1 year	84	84	87	88	84	85	80	82	64	70	77	80
3 years	71	72	67	68	65	67	58	63	38	52	55	62
5 years	64	65	59	61	54	58	46	54	26	44	44	54
95% CI	(58-70)	(58-71)	(56-63)	(57-64)	(52-56)	(55-60)	(44-47)	(52-56)	(24-28)	(41-47)	(43-44)	(53-55)
♀ WOMEN (n)	(239)		(584)		(1 220)		(1 984)		(2 846)		(6 873)	
1 year	88	88	89	89	87	88	83	84	64	68	77	79
3 years	71	71	71	72	71	72	64	67	38	48	55	62
5 years	61	61	61	62	63	64	55	60	28	43	46	56
95% CI	(54-67)	(55-67)	(57-65)	(57-66)	(60-65)	(62-67)	(53-57)	(58-62)	(27-30)	(40-45)	(45-47)	(54-57)
ALL (n)	(465)		(1389)		(3 324)		(5 004)		(5 457)		(15 639)	
1 year	86	86	88	88	85	78	81	83	64	69	77	80
3 years	71	71	69	69	67	69	60	65	38	50	55	62
5 years	62	63	60	61	57	60	49	56	27	44	45	55
95% CI	(58-67)	(58-67)	(57-62)	(58-64)	(55-59)	(58-62)	(48-51)	(55-58)	(26-28)	(42-45)	(44-45)	(54-56)

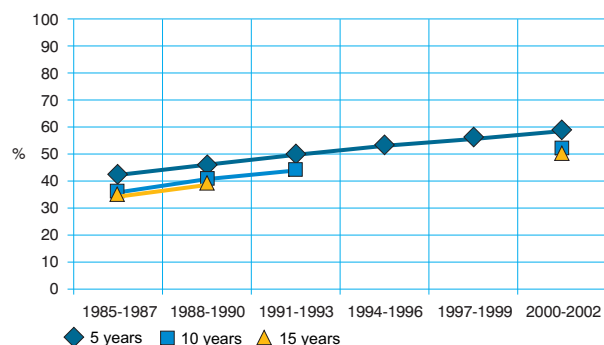
Five-year age-standardised relative survival



Relative survival by Italian Areas



Trend of relative survival Pool of some Italian Registries



→ Ulteriori dati sono disponibili presso: www.registri-tumori.it