

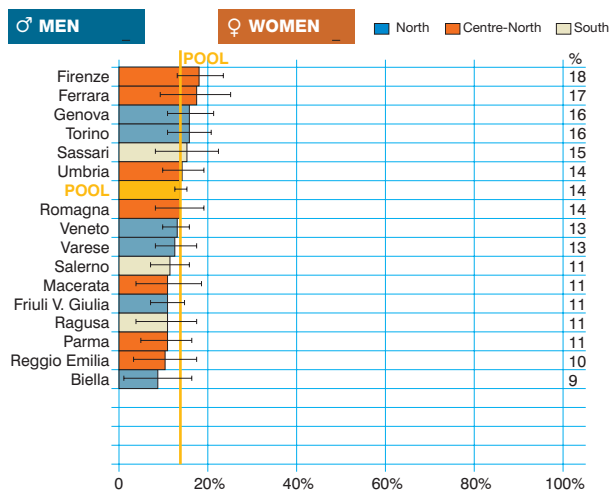
Biliary tract
(ICD-10 = C23-24)

Tumore delle vie biliari

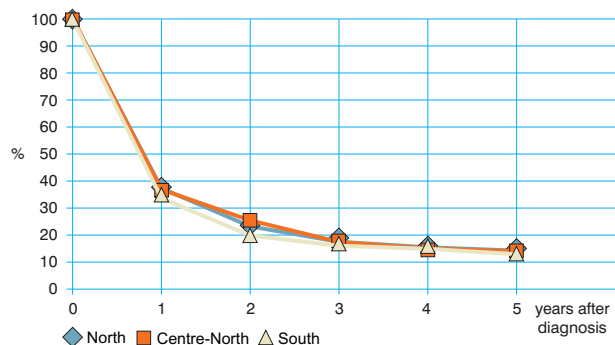
Observed and relative survival (%) by sex and age. Data from the Pool of Italian Cancer Registries follow-up 31.12.2003

	15-44		45-54		55-64		65-74		75+		ALL	
	obs	rel	obs	rel	obs	rel	obs	rel	obs	rel	obs	rel
♂ MEN (n)	(27)		(108)		(352)		(660)		(836)		(1 983)	
1 year	63	63	46	47	44	44	39	40	24	27	34	36
3 years	33	34	22	23	21	22	18	20	9	13	15	18
5 years	26	26	20	21	16	17	13	16	6	10	11	15
95% CI	(9-42)	(9-43)	(13-28)	(13-29)	(12-19)	(12-21)	(11-16)	(13-19)	(4-7)	(7-13)	(10-13)	(13-17)
♀ WOMEN (n)	(25)		(153)		(421)		(980)		(1 757)		(3 336)	
1 year	68	68	43	43	38	38	33	33	22	23	28	30
3 years	40	40	19	19	17	17	15	15	7	10	12	13
5 years	36	36	15	15	14	14	10	11	5	8	8	11
95% CI	(17-55)	(17-55)	(9-21)	(9-21)	(10-17)	(10-17)	(8-12)	(9-13)	(4-6)	(6-10)	(7-9)	(10-12)
ALL (n)	(52)		(261)		(773)		(1 640)		(2 593)		(5 319)	
1 year	65	66	44	44	40	56	35	36	22	24	30	32
3 years	37	37	20	21	19	19	16	17	8	11	13	15
5 years	31	31	17	18	14	15	12	13	5	9	10	12
95% CI	(18-43)	(18-43)	(13-22)	(13-22)	(12-17)	(12-18)	(10-13)	(11-15)	(5-6)	(7-10)	(9-10)	(11-13)

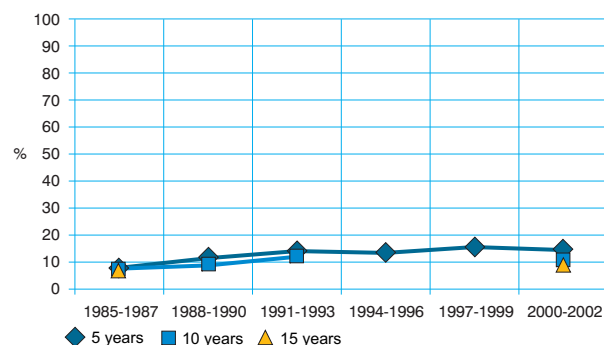
Five-year age-standardised relative survival



Relative survival by Italian Areas



Trend of relative survival Pool of some Italian Registries



→ Ulteriori dati sono disponibili presso: www.registri-tumori.it