

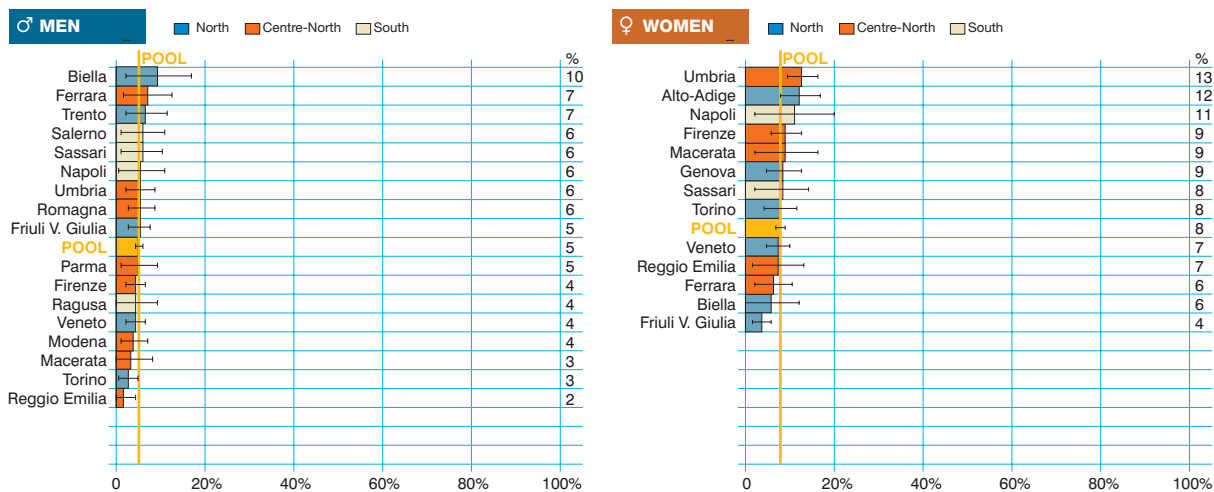
Pancreas cancer
(ICD-10 = C25)

Tumore del pancreas

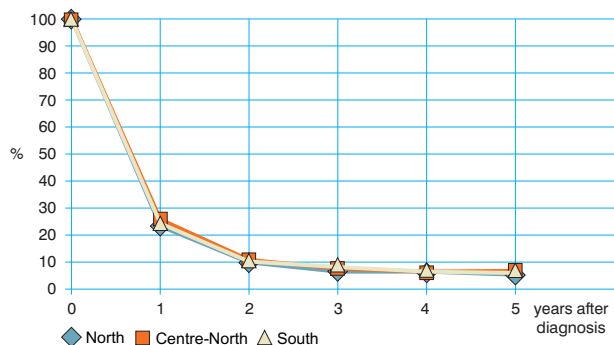
Observed and relative survival (%) by sex and age. Data from the Pool of Italian Cancer Registries follow-up 31.12.2003

	15-44		45-54		55-64		65-74		75+		ALL	
	obs	rel	obs	rel	obs	rel	obs	rel	obs	rel	obs	rel
♂ MEN (n)	(115)		(415)		(1 151)		(1 789)		(1 673)		(5 143)	
1 year	31	31	28	28	26	26	19	19	15	17	20	21
3 years	16	16	10	10	7	7	4	5	4	5	5	6
5 years	13	13	8	8	5	5	3	4	2	4	4	5
95% CI	(7-19)	(7-19)	(5-10)	(5-10)	(4-6)	(4-6)	(2-4)	(3-5)	(2-3)	(3-5)	(3-4)	(4-5)
♀ WOMEN (n)	(81)		(252)		(719)		(1 559)		(2 725)		(5 336)	
1 year	59	59	37	38	30	30	25	25	14	15	21	22
3 years	43	43	15	15	8	9	7	7	4	5	6	7
5 years	37	37	11	11	7	7	5	5	2	3	5	6
95% CI	(26-48)	(27-48)	(7-14)	(7-15)	(5-9)	(5-9)	(4-6)	(4-7)	(2-3)	(3-4)	(4-5)	(5-6)
ALL (n)	(196)		(667)		(1 870)		(3 348)		(4 398)		(10 479)	
1 year	43	43	31	31	27	31	21	22	15	16	21	22
3 years	27	27	11	12	7	8	6	6	4	5	6	7
5 years	23	23	9	9	6	6	4	5	2	4	4	5
95% CI	(17-29)	(17-29)	(6-11)	(7-11)	(5-7)	(5-7)	(3-5)	(4-5)	(2-3)	(3-4)	(4-5)	(5-6)

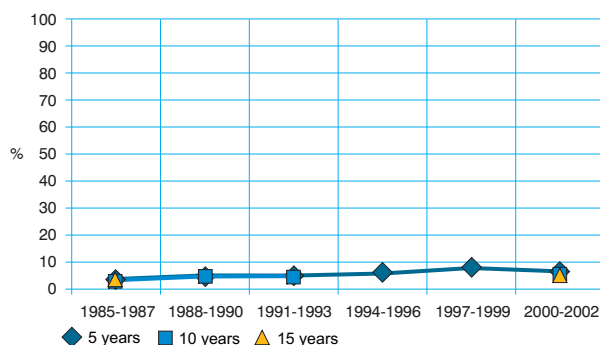
Five-year age-standardised relative survival



Relative survival by Italian Areas



Trend of relative survival Pool of some Italian Registries



→ Ulteriori dati sono disponibili presso: www.registri-tumori.it