



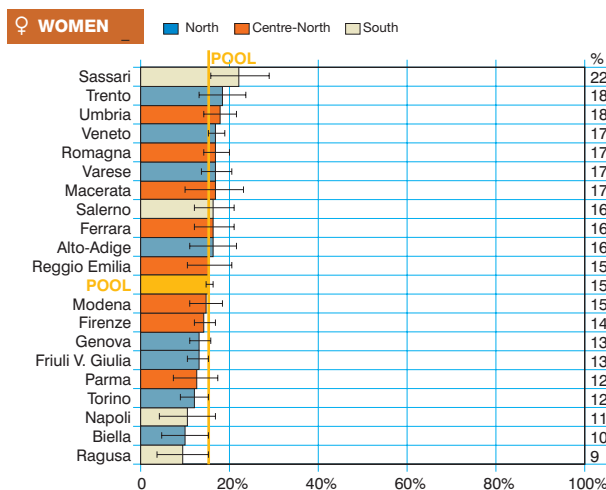
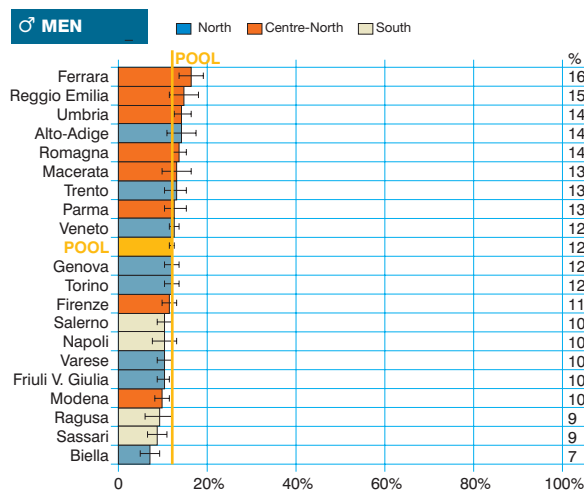
Lung cancer
(ICD-10 = C33-34)

Tumore del polmone

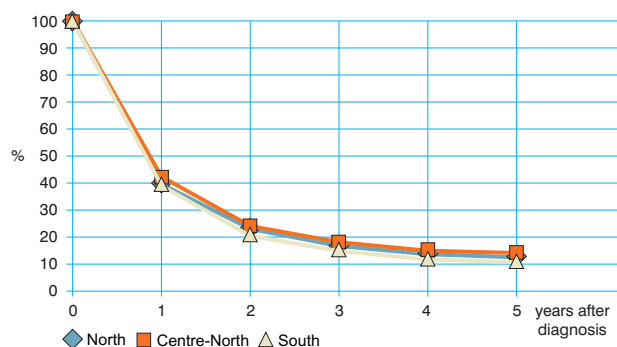
Observed and relative survival (%) by sex and age. Data from the Pool of Italian Cancer Registries follow-up 31.12.2003

	15-44		45-54		55-64		65-74		75+		ALL	
	obs	rel	obs	rel	obs	rel	obs	rel	obs	rel	obs	rel
♂ MEN (n)	(495)		(2 851)		(8 351)		(14 731)		(9 281)		(35 709)	
1 year	47	47	48	48	45	45	39	40	27	30	38	39
3 years	25	25	21	21	18	19	15	16	7	10	14	16
5 years	22	22	16	17	14	14	10	12	4	6	10	12
95% CI	(18-26)	(18-26)	(15-18)	(15-18)	(13-14)	(14-15)	(10-10)	(11-12)	(4-4)	(6-7)	(10-10)	(12-12)
♀ WOMEN (n)	(285)		(788)		(1 608)		(2 981)		(3 172)		(8 834)	
1 year	60	60	54	54	51	51	43	43	27	29	40	41
3 years	36	36	24	24	25	25	18	19	10	12	17	19
5 years	31	31	19	20	19	20	13	14	6	9	13	15
95% CI	(25-36)	(26-36)	(16-22)	(17-22)	(17-21)	(18-22)	(12-14)	(13-16)	(5-7)	(7-10)	(12-14)	(14-16)
ALL (n)	(780)		(3 639)		(9 959)		(17 712)		(12 453)		(44 543)	
1 year	52	52	49	49	46	36	39	41	27	29	38	40
3 years	29	29	22	22	19	20	15	17	8	10	15	17
5 years	25	25	17	17	14	15	11	12	4	7	11	13
95% CI	(22-28)	(22-28)	(16-18)	(16-18)	(14-15)	(15-16)	(10-11)	(12-13)	(4-5)	(6-8)	(10-11)	(12-13)

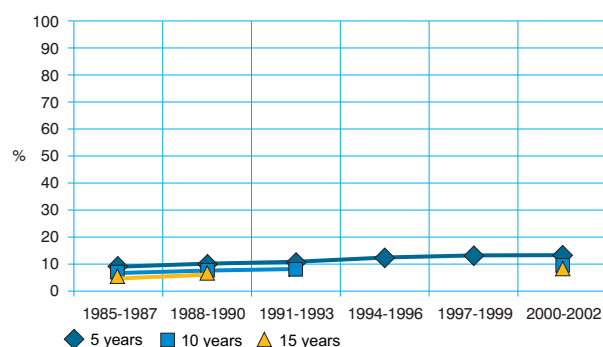
Five-year age-standardised relative survival



Relative survival by Italian Areas



Trend of relative survival Pool of some Italian Registries



➔ Ulteriori dati sono disponibili presso: www.registri-tumori.it