

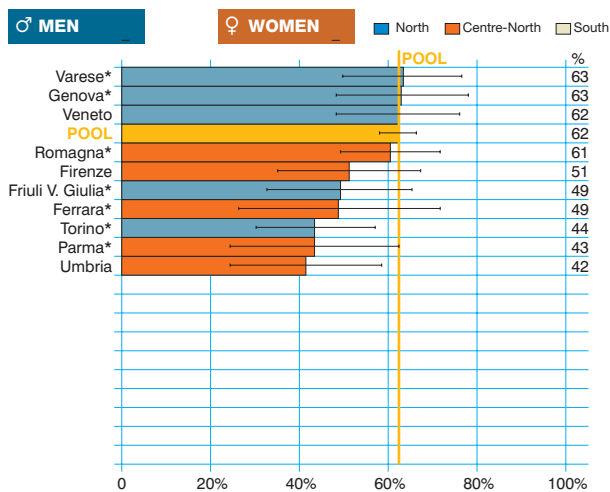
Bone cancer
(ICD-10 = C40-41)

Tumore dell'osso

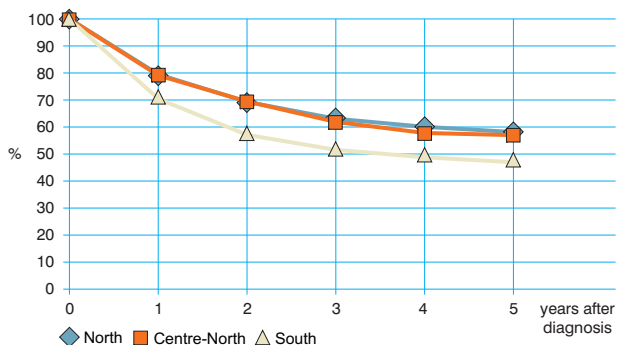
Observed and relative survival (%) by sex and age. Data from the Pool of Italian Cancer Registries follow-up 31.12.2003

	15-44		45-54		55-64		65-74		75+		ALL	
	obs	rel	obs	rel	obs	rel	obs	rel	obs	rel	obs	rel
♂ MEN (n)	(151)		(32)		(69)		(74)		(41)		(367)	
1 year	86	86	88	88	71	72	63	65	59	64	76	77
3 years	67	67	81	82	57	58	44	48	32	43	58	61
5 years	62	62	78	79	54	57	34	40	24	37	52	57
95% CI	(54-70)	(54-70)	(64-92)	(65-94)	(42-65)	(44-69)	(23-45)	(27-53)	(11-38)	(14-59)	(47-57)	(52-63)
♀ WOMEN (n)	(108)		(31)		(50)		(46)		(66)		(301)	
1 year	91	91	87	87	86	86	65	66	58	61	78	80
3 years	66	66	74	75	74	75	46	48	38	44	59	62
5 years	63	63	71	72	68	70	44	47	21	29	52	57
95% CI	(53-72)	(54-72)	(55-87)	(56-88)	(55-81)	(56-83)	(29-58)	(31-62)	(11-31)	(15-42)	(47-58)	(51-63)
ALL (n)	(259)		(63)		(119)		(120)		(107)		(668)	
1 year	88	88	87	88	77	75	64	65	58	62	77	78
3 years	66	66	78	79	64	66	45	48	36	45	58	61
5 years	62	63	75	76	60	62	38	43	22	33	52	57
95% CI	(56-68)	(57-68)	(64-85)	(65-87)	(51-68)	(53-71)	(29-47)	(33-53)	(14-30)	(21-45)	(48-56)	(53-61)

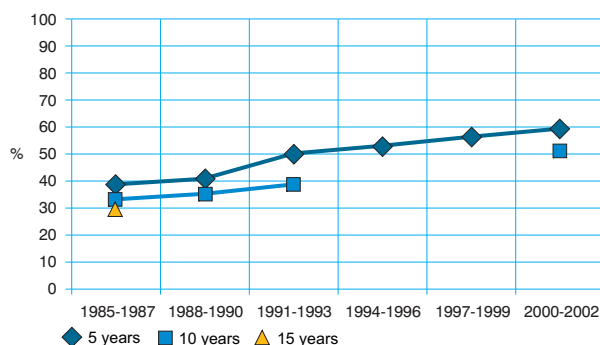
Five-year age-standardised relative survival



Relative survival by Italian Areas



Trend of relative survival Pool of some Italian Registries



→ Ulteriori dati sono disponibili presso: www.registri-tumori.it