

Mesothelioma

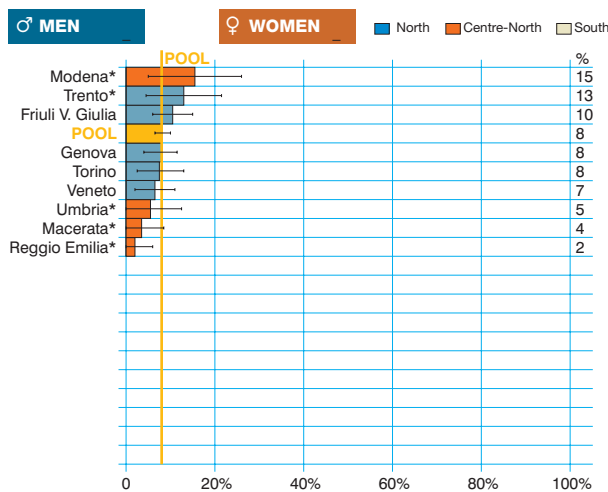
(ICD-10 = C45)

Mesotelioma

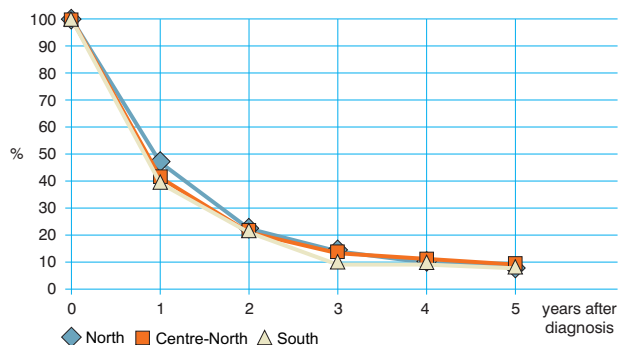
Observed and relative survival (%) by sex and age. Data from the Pool of Italian Cancer Registries follow-up 31.12.2003

	15-44		45-54		55-64		65-74		75+		ALL	
	obs	rel	obs	rel	obs	rel	obs	rel	obs	rel	obs	rel
♂ MEN (n)	(28)		(106)		(263)		(362)		(247)		(1 006)	
1 year	50	50	64	64	53	54	41	42	27	30	43	45
3 years	29	29	23	23	13	13	8	9	4	5	10	11
5 years	21	22	17	17	8	8	4	4	2	3	6	7
95% CI	(6-37)	(6-37)	(10-24)	(10-25)	(4-11)	(5-11)	(2-6)	(2-7)	(0-3)	(0-5)	(4-8)	(6-9)
♀ WOMEN (n)	(13)		(33)		(76)		(147)		(119)		(388)	
1 year	69	69	52	52	61	61	48	49	32	34	47	48
3 years	54	54	30	31	18	19	12	12	7	8	15	16
5 years	39	39	23	24	14	14	5	5	3	4	9	10
95% CI	(12-65)	(12-65)	(9-38)	(9-39)	(6-22)	(6-23)	(1-9)	(1-9)	(0-7)	(0-9)	(6-12)	(7-14)
ALL (n)	(41)		(139)		(339)		(509)		(366)		(1 394)	
1 year	56	56	61	61	55	42	43	44	29	31	44	46
3 years	37	37	25	25	14	14	9	10	5	6	11	13
5 years	27	27	19	19	9	10	4	5	2	3	7	8
95% CI	(13-40)	(13-41)	(12-25)	(12-26)	(6-12)	(6-13)	(2-6)	(3-7)	(1-4)	(1-6)	(6-8)	(7-10)

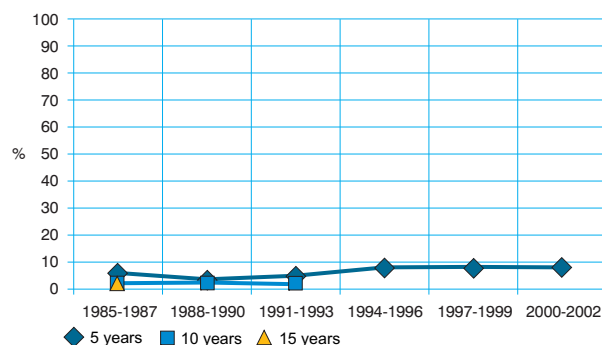
Five-year age-standardised relative survival



Relative survival by Italian Areas



Trend of relative survival Pool of some Italian Registries



→ Ulteriori dati sono disponibili presso: www.registri-tumori.it