

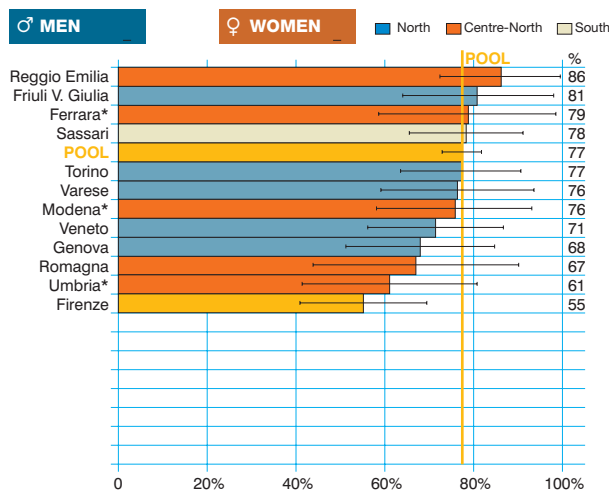
Kaposi's sarcoma (ICD-10 = C46)

Sarcoma di Kaposi

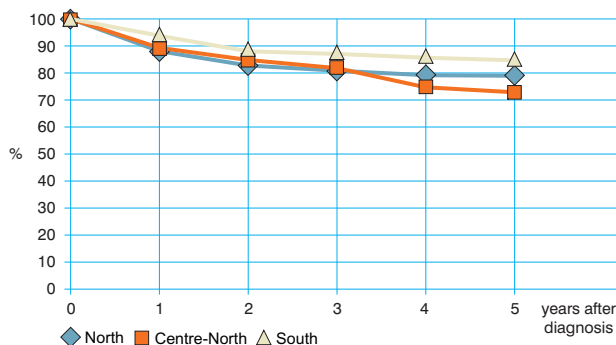
Observed and relative survival (%) by sex and age. Data from the Pool of Italian Cancer Registries follow-up 31.12.2003

	15-44		45-54		55-64		65-74		75+		ALL	
	obs	rel	obs	rel	obs	rel	obs	rel	obs	rel	obs	rel
♂ MEN (n)	(233)		(86)		(79)		(131)		(136)		(665)	
1 year	74	74	78	78	89	90	91	93	88	98	82	85
3 years	58	58	66	67	82	85	82	90	67	94	68	75
5 years	55	55	66	67	73	78	75	89	49	84	61	70
95% CI	(48-61)	(49-62)	(56-76)	(56-77)	(64-83)	(67-88)	(67-82)	(80-98)	(40-57)	(69-99)	(57-65)	(66-75)
♀ WOMEN (n)	(39)		(11)		(19)		(55)		(105)		(229)	
1 year	62	62	91	91	95	95	95	96	81	88	83	86
3 years	51	51	73	73	95	95	78	82	61	79	67	76
5 years	41	41	73	73	95	95	65	71	48	74	56	70
95% CI	(25-56)	(25-56)	(46-99)	(46-100)	(85-105)	(84-105)	(52-78)	(57-85)	(39-58)	(59-89)	(50-62)	(62-78)
ALL (n)	(272)		(97)		(98)		(186)		(241)		(894)	
1 year	72	72	79	80	90	60	92	94	85	94	82	85
3 years	57	57	67	67	85	87	81	88	64	87	68	75
5 years	53	53	67	67	78	82	72	83	48	80	60	70
95% CI	(47-59)	(47-59)	(57-76)	(58-77)	(69-86)	(73-90)	(65-78)	(76-91)	(42-55)	(69-91)	(57-63)	(66-74)

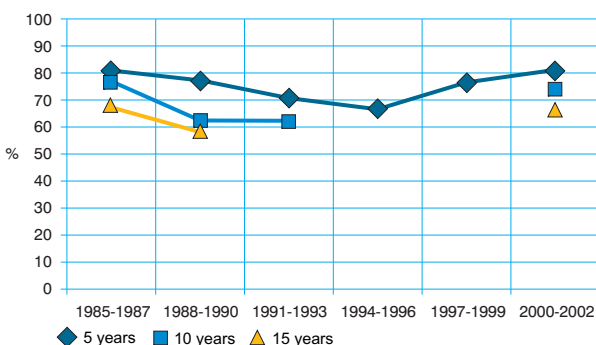
Five-year age-standardised relative survival



Relative survival by Italian Areas



Trend of relative survival Pool of some Italian Registries



→ Ulteriori dati sono disponibili presso: www.registri-tumori.it