

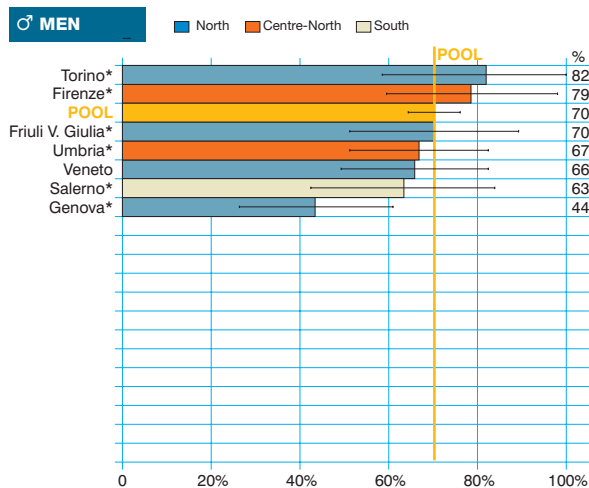
Penis cancer
(ICD-10 = C60)

Tumore del pene

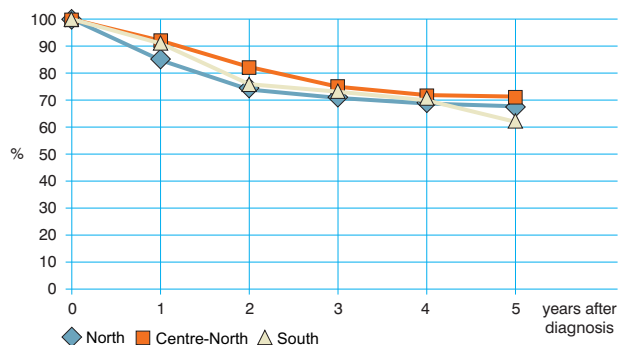
Observed and relative survival (%) by sex and age. Data from the Pool of Italian Cancer Registries follow-up 31.12.2003

| | 15-44 | | 45-54 | | 55-64 | | 65-74 | | 75+ | | ALL | |
|------------------|-------------|-----------|-------------|-----------|--------------|-----------|--------------|-----------|--------------|-----------|--------------|-----------|
| | obs | rel | obs | rel | obs | rel | obs | rel | obs | rel | obs | rel |
| ♂ MEN (n) | (27) | | (51) | | (104) | | (112) | | (136) | | (430) | |
| 1 year | 82 | 82 | 98 | 98 | 88 | 88 | 90 | 93 | 75 | 83 | 85 | 89 |
| 3 years | 70 | 71 | 80 | 81 | 75 | 78 | 77 | 84 | 43 | 60 | 66 | 75 |
| 5 years | 70 | 71 | 78 | 79 | 70 | 74 | 71 | 82 | 31 | 54 | 59 | 72 |
| 95% CI | (53-88) | (53-88) | (66-90) | (67-91) | (61-79) | (64-83) | (63-80) | (73-92) | (23-38) | (40-68) | (54-64) | (67-78) |

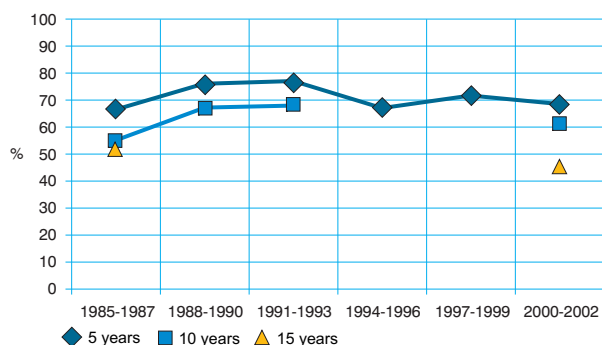
Five-year age-standardised relative survival



Relative survival by Italian Areas



Trend of relative survival Pool of some Italian Registries



➔ Ulteriori dati sono disponibili presso: www.registri-tumori.it