

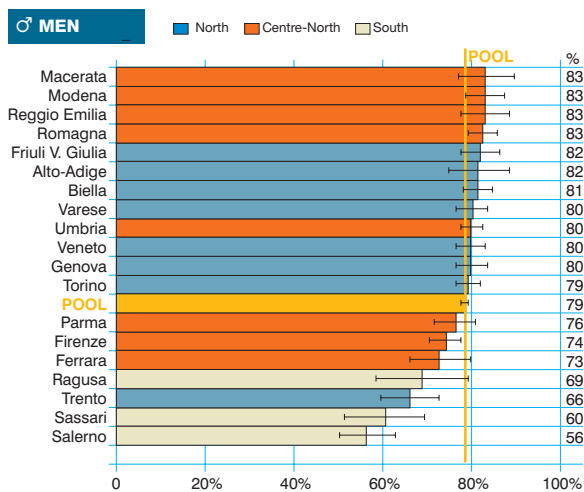
Prostate cancer
(ICD-10 = C61)

Tumore della prostata

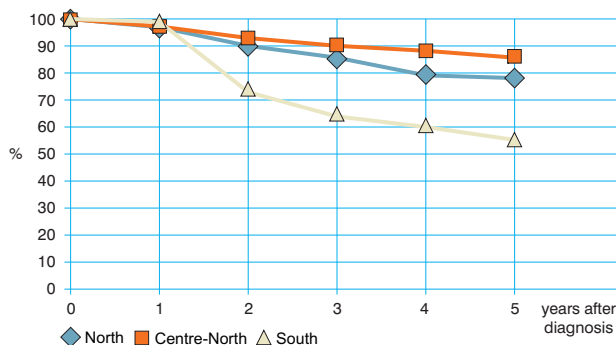
Observed and relative survival (%) by sex and age. Data from the Pool of Italian Cancer Registries follow-up 31.12.2003

	15-44		45-54		55-64		65-74		75+		ALL	
	obs	rel	obs	rel	obs	rel	obs	rel	obs	rel	obs	rel
♂ MEN (n)	(17)		(476)		(4 522)		(12 684)		(12 428)		(30 127)	
1 year	94	94	96	96	96	97	94	96	81	89	89	94
3 years	77	77	85	86	87	90	81	89	57	78	72	85
5 years	65	65	78	80	80	85	71	85	41	70	60	80
95% CI	(42-87)	(42-88)	(74-82)	(76-84)	(79-81)	(84-87)	(70-72)	(84-86)	(40-42)	(68-71)	(60-61)	(79-81)

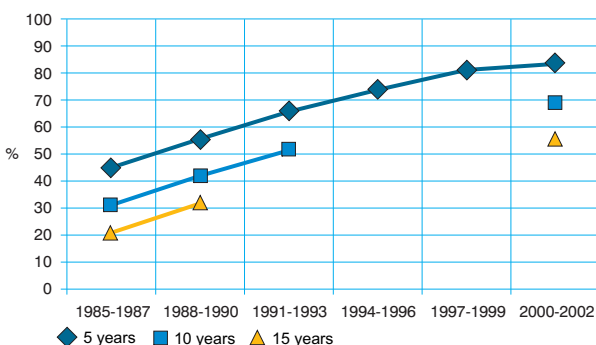
Five-year age-standardised relative survival



Relative survival by Italian Areas



Trend of relative survival Pool of some Italian Registries



→ Ulteriori dati sono disponibili presso: www.registri-tumori.it