

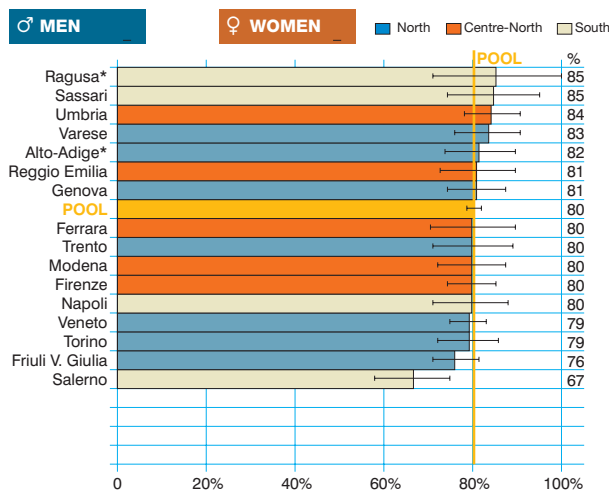
## Hodgkin's disease (ICD-10 = C81)

Linfoma di Hodgkin

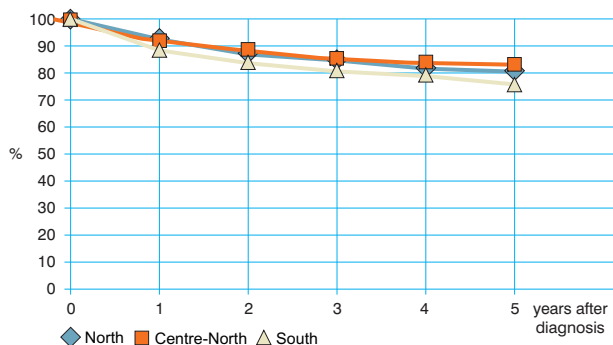
Observed and relative survival (%) by sex and age. Data from the Pool of Italian Cancer Registries follow-up 31.12.2003

	15-44		45-54		55-64		65-74		75+		ALL	
	obs	rel	obs	rel	obs	rel	obs	rel	obs	rel	obs	rel
<b>♂ MEN (n)</b>	<b>(635)</b>		<b>(145)</b>		<b>(128)</b>		<b>(111)</b>		<b>(78)</b>		<b>(1 097)</b>	
1 year	98	98	92	93	89	90	79	81	60	65	91	92
3 years	93	93	84	85	81	83	65	71	36	46	83	86
<b>5 years</b>	<b>91</b>	<b>91</b>	<b>77</b>	<b>79</b>	<b>71</b>	<b>75</b>	<b>53</b>	<b>62</b>	<b>22</b>	<b>34</b>	<b>78</b>	<b>82</b>
95% CI	(88-93)	(89-93)	(70-84)	(71-86)	(63-79)	(66-83)	(43-62)	(51-73)	(12-31)	(19-49)	(75-80)	(80-85)
<b>♀ WOMEN (n)</b>	<b>(636)</b>		<b>(96)</b>		<b>(91)</b>		<b>(112)</b>		<b>(100)</b>		<b>(1 035)</b>	
1 year	99	99	99	99	91	92	84	85	54	58	93	93
3 years	96	96	96	96	80	81	64	67	27	33	84	87
<b>5 years</b>	<b>93</b>	<b>93</b>	<b>94</b>	<b>94</b>	<b>74</b>	<b>75</b>	<b>58</b>	<b>63</b>	<b>20</b>	<b>29</b>	<b>81</b>	<b>84</b>
95% CI	(91-95)	(91-95)	(89-99)	(90-99)	(65-83)	(66-85)	(49-67)	(53-73)	(12-28)	(18-41)	(78-83)	(82-87)
<b>ALL (n)</b>	<b>(1 271)</b>		<b>(241)</b>		<b>(219)</b>		<b>(223)</b>		<b>(178)</b>		<b>(2 132)</b>	
1 year	99	99	95	95	90	96	82	83	57	61	92	93
3 years	94	94	89	90	80	82	65	69	31	39	84	86
<b>5 years</b>	<b>92</b>	<b>92</b>	<b>84</b>	<b>85</b>	<b>72</b>	<b>75</b>	<b>55</b>	<b>62</b>	<b>21</b>	<b>32</b>	<b>79</b>	<b>83</b>
95% CI	(90-93)	(91-94)	(79-88)	(80-90)	(66-78)	(69-82)	(49-62)	(55-70)	(15-27)	(22-41)	(77-81)	(81-85)

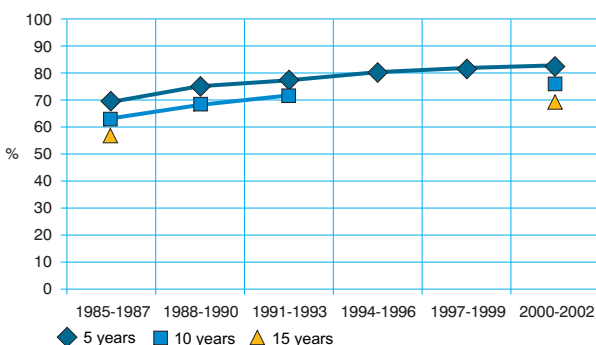
### Five-year age-standardised relative survival



### Relative survival by Italian Areas



### Trend of relative survival Pool of some Italian Registries



→ Ulteriori dati sono disponibili presso: [www.registri-tumori.it](http://www.registri-tumori.it)