

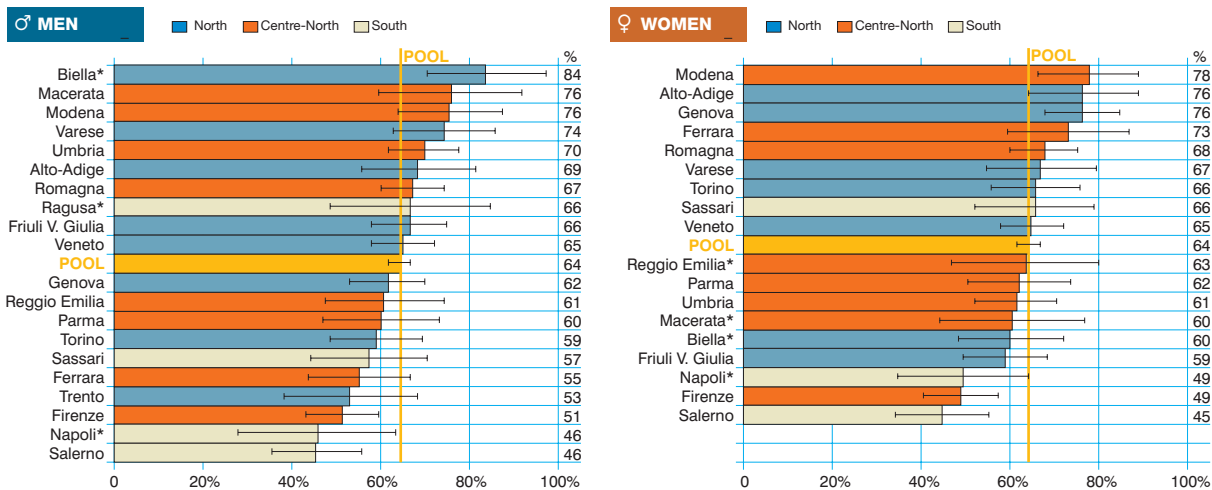
## Lymphoid leukaemia (ICD-10 = C91)

Leucemia linfatica

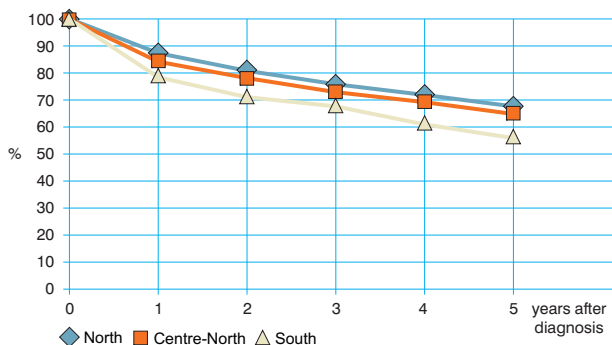
Observed and relative survival (%) by sex and age. Data from the Pool of Italian Cancer Registries follow-up 31.12.2003

	15-44		45-54		55-64		65-74		75+		ALL	
	obs	rel	obs	rel	obs	rel	obs	rel	obs	rel	obs	rel
<b>♂ MEN (n)</b>	<b>(200)</b>		<b>(217)</b>		<b>(512)</b>		<b>(835)</b>		<b>(777)</b>		<b>(2541)</b>	
1 year	84	84	91	91	90	91	88	90	68	75	82	86
3 years	64	64	80	81	81	84	72	79	46	63	66	75
<b>5 years</b>	<b>59</b>	<b>59</b>	<b>76</b>	<b>77</b>	<b>73</b>	<b>77</b>	<b>57</b>	<b>67</b>	<b>28</b>	<b>50</b>	<b>53</b>	<b>66</b>
95% CI	(52-66)	(52-66)	(70-81)	(71-83)	(69-76)	(73-81)	(53-60)	(63-71)	(25-31)	(44-55)	(51-55)	(64-68)
<b>♀ WOMEN (n)</b>	<b>(107)</b>		<b>(120)</b>		<b>(309)</b>		<b>(531)</b>		<b>(904)</b>		<b>(1971)</b>	
1 year	78	78	88	88	89	90	87	88	69	75	79	82
3 years	60	60	81	81	78	79	77	81	48	62	63	72
<b>5 years</b>	<b>53</b>	<b>53</b>	<b>75</b>	<b>76</b>	<b>70</b>	<b>72</b>	<b>66</b>	<b>72</b>	<b>33</b>	<b>51</b>	<b>51</b>	<b>63</b>
95% CI	(43-62)	(43-63)	(67-83)	(68-83)	(65-75)	(67-78)	(62-70)	(67-76)	(30-36)	(46-56)	(49-53)	(61-66)
<b>ALL (n)</b>	<b>(307)</b>		<b>(337)</b>		<b>(821)</b>		<b>(1366)</b>		<b>(1681)</b>		<b>(4512)</b>	
1 year	82	82	90	90	90	70	87	90	69	75	81	84
3 years	62	63	80	81	80	82	74	79	47	62	65	73
<b>5 years</b>	<b>57</b>	<b>57</b>	<b>75</b>	<b>77</b>	<b>72</b>	<b>75</b>	<b>60</b>	<b>69</b>	<b>31</b>	<b>50</b>	<b>52</b>	<b>65</b>
95% CI	(51-62)	(51-63)	(70-80)	(72-81)	(69-75)	(72-79)	(58-63)	(66-72)	(29-33)	(47-54)	(51-54)	(63-67)

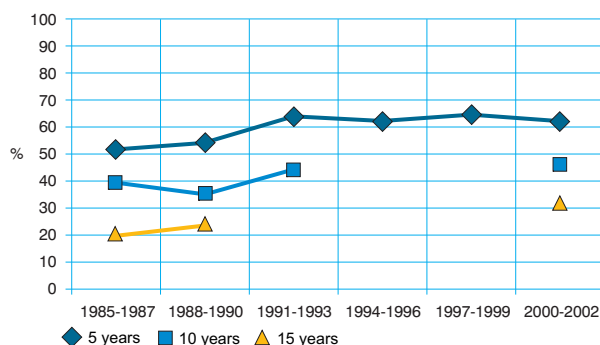
### Five-year age-standardised relative survival



### Relative survival by Italian Areas



### Trend of relative survival Pool of some Italian Registries



→ Ulteriori dati sono disponibili presso: [www.registri-tumori.it](http://www.registri-tumori.it)