

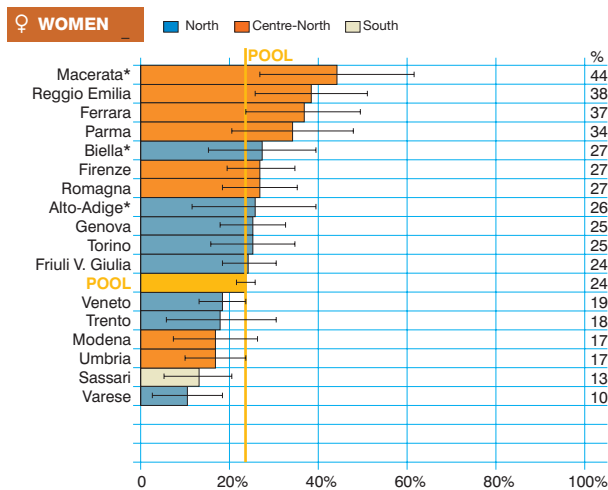
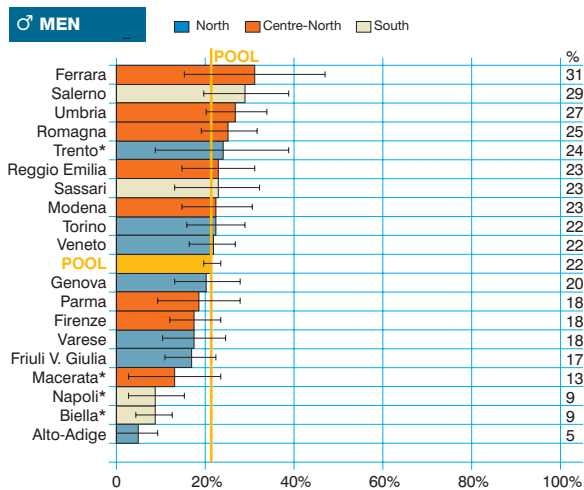
## Myeloid leukaemia (ICD-10 = C92)

Leucemia mieloide

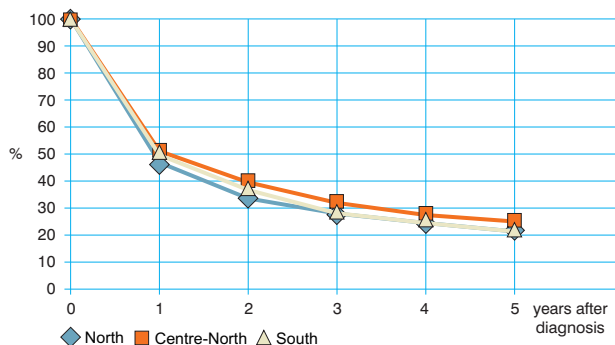
Observed and relative survival (%) by sex and age. Data from the Pool of Italian Cancer Registries follow-up 31.12.2003

	15-44		45-54		55-64		65-74		75+		ALL	
	obs	rel	obs	rel	obs	rel	obs	rel	obs	rel	obs	rel
<b>♂ MEN (n)</b>	<b>(329)</b>		<b>(196)</b>		<b>(369)</b>		<b>(617)</b>		<b>(681)</b>		<b>(2 192)</b>	
1 year	81	81	69	70	56	57	43	45	24	27	48	50
3 years	62	62	49	49	35	36	21	23	8	11	28	32
<b>5 years</b>	<b>57</b>	<b>58</b>	<b>43</b>	<b>44</b>	<b>26</b>	<b>28</b>	<b>13</b>	<b>15</b>	<b>3</b>	<b>5</b>	<b>22</b>	<b>26</b>
95% CI	(52-62)	(52-63)	(36-50)	(37-51)	(22-31)	(23-33)	(10-16)	(12-18)	(2-5)	(3-8)	(20-23)	(24-29)
<b>♀ WOMEN (n)</b>	<b>(234)</b>		<b>(163)</b>		<b>(255)</b>		<b>(452)</b>		<b>(739)</b>		<b>(1 843)</b>	
1 year	80	80	76	76	64	64	43	44	28	30	48	49
3 years	62	62	52	52	39	40	24	25	11	13	28	31
<b>5 years</b>	<b>58</b>	<b>58</b>	<b>45</b>	<b>46</b>	<b>29</b>	<b>30</b>	<b>16</b>	<b>18</b>	<b>5</b>	<b>8</b>	<b>21</b>	<b>26</b>
95% CI	(52-64)	(52-64)	(37-53)	(38-53)	(24-35)	(24-36)	(13-19)	(14-21)	(4-7)	(5-10)	(19-23)	(23-28)
<b>ALL (n)</b>	<b>(563)</b>		<b>(359)</b>		<b>(624)</b>		<b>(1 069)</b>		<b>(1 420)</b>		<b>(4 035)</b>	
1 year	80	80	72	73	59	69	43	44	26	29	48	49
3 years	62	62	50	51	36	37	22	24	10	13	28	31
<b>5 years</b>	<b>58</b>	<b>58</b>	<b>44</b>	<b>45</b>	<b>28</b>	<b>29</b>	<b>14</b>	<b>16</b>	<b>4</b>	<b>7</b>	<b>22</b>	<b>26</b>
95% CI	(53-62)	(54-62)	(39-49)	(40-50)	(24-31)	(25-33)	(12-16)	(14-19)	(3-5)	(5-8)	(20-23)	(24-28)

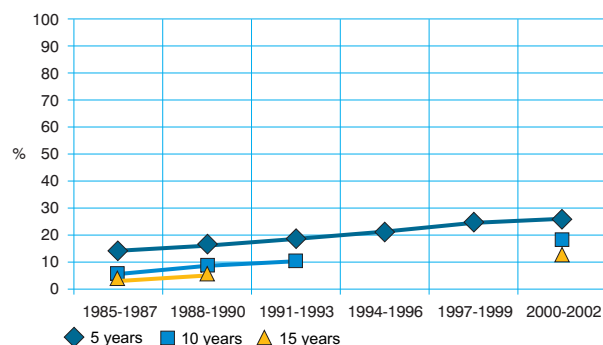
### Five-year age-standardised relative survival



### Relative survival by Italian Areas



### Trend of relative survival Pool of some Italian Registries



➔ Ulteriori dati sono disponibili presso: [www.registri-tumori.it](http://www.registri-tumori.it)