

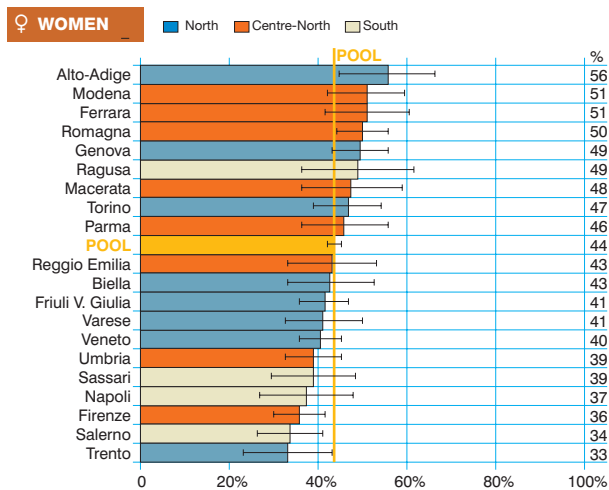
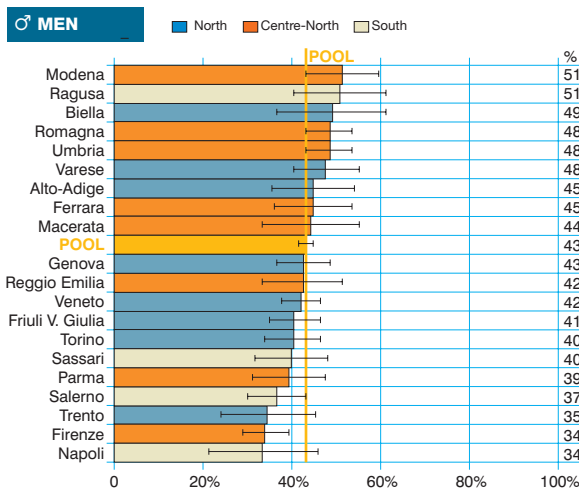
All Leukaemias (ICD-10 = C91-95)

Leucemie

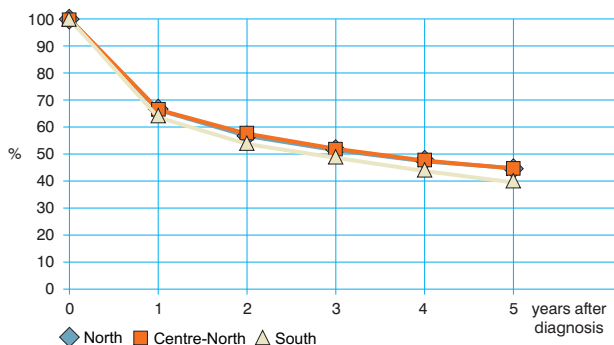
Observed and relative survival (%) by sex and age. Data from the Pool of Italian Cancer Registries follow-up 31.12.2003

	15-44		45-54		55-64		65-74		75+		ALL	
	obs	rel	obs	rel	obs	rel	obs	rel	obs	rel	obs	rel
♂ MEN (n)	(565)		(445)		(941)		(1 557)		(1 610)		(5 118)	
1 year	81	81	78	79	74	75	66	68	45	50	64	66
3 years	62	63	63	64	60	62	48	52	26	36	46	52
5 years	58	58	59	60	51	55	36	43	15	27	37	46
95% CI	(54-62)	(54-62)	(54-63)	(55-65)	(48-54)	(51-58)	(34-38)	(40-45)	(14-17)	(24-30)	(35-38)	(44-47)
♀ WOMEN (n)	(364)		(297)		(600)		(1 053)		(1 811)		(4 125)	
1 year	80	80	80	80	76	76	65	66	48	51	61	64
3 years	62	62	63	64	58	59	51	53	29	38	44	50
5 years	57	57	56	57	50	52	41	45	19	29	35	43
95% CI	(52-62)	(52-62)	(51-62)	(51-63)	(46-54)	(47-56)	(38-44)	(41-48)	(17-21)	(27-32)	(34-37)	(41-45)
ALL (n)	(929)		(742)		(1 541)		(2 610)		(3 421)		(9 243)	
1 year	81	81	79	79	75	69	66	67	47	51	63	65
3 years	62	62	63	64	59	61	49	53	28	37	45	51
5 years	57	58	58	59	51	53	38	44	17	28	36	44
95% CI	(54-60)	(54-61)	(54-61)	(55-62)	(48-53)	(51-56)	(36-40)	(41-46)	(16-19)	(26-30)	(35-37)	(43-46)

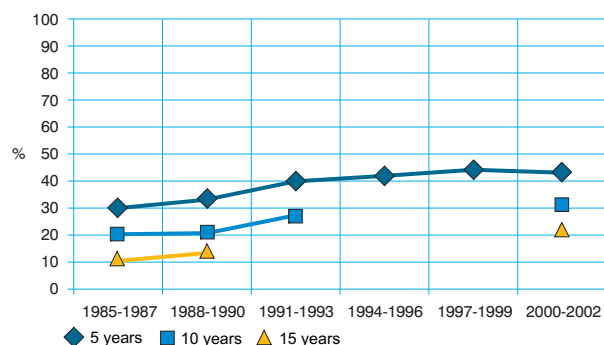
Five-year age-standardised relative survival



Relative survival by Italian Areas



Trend of relative survival Pool of some Italian Registries



→ Ulteriori dati sono disponibili presso: www.registri-tumori.it