

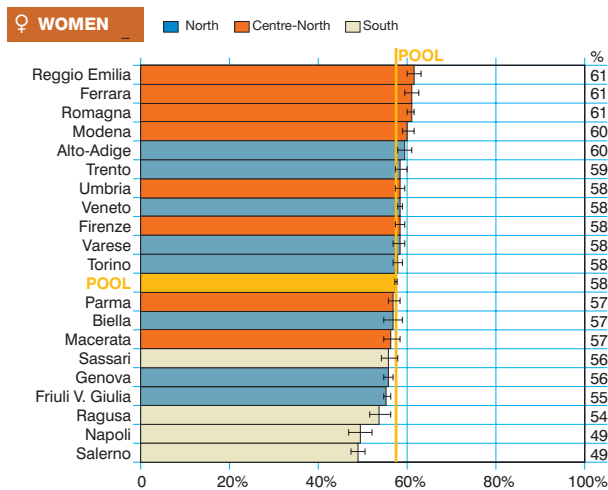
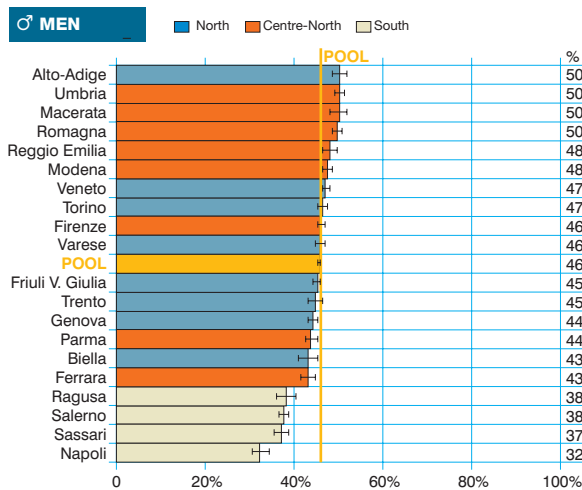
All sites except C44

Tutti i tumori esclusi i C44

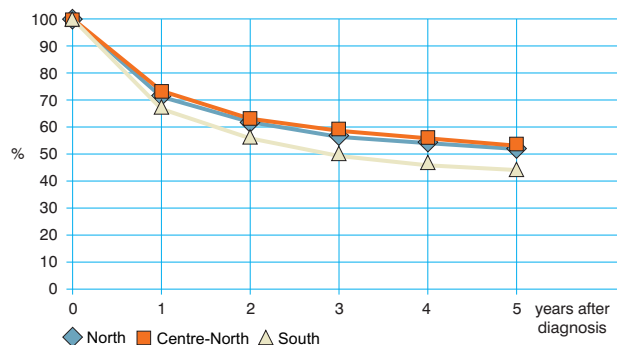
Observed and relative survival (%) by sex and age. Data from the Pool of Italian Cancer Registries follow-up 31.12.2003

	15-44		45-54		55-64		65-74		75+		ALL	
	obs	rel	obs	rel	obs	rel	obs	rel	obs	rel	obs	rel
♂ MEN (n)	(9 825)		(16 281)		(41 470)		(70 467)		(57 646)		(195 689)	
1 year	84	84	74	74	70	71	65	67	54	59	65	67
3 years	73	73	56	56	51	53	47	51	33	44	46	52
5 years	69	70	50	51	45	48	39	46	23	38	38	47
95% CI	(68-70)	(69-71)	(49-51)	(50-52)	(44-45)	(47-48)	(38-39)	(45-46)	(22-23)	(38-39)	(38-38)	(46-47)
♀ WOMEN (n)	(15 242)		(22 014)		(32 543)		(46 095)		(56 121)		(172 015)	
1 year	94	94	90	91	85	85	74	75	54	58	74	76
3 years	85	85	81	81	72	73	59	61	36	45	59	64
5 years	81	81	75	76	65	67	51	56	27	40	52	60
95% CI	(80-81)	(80-82)	(75-76)	(75-77)	(65-66)	(67-68)	(51-52)	(55-56)	(26-27)	(39-40)	(51-52)	(60-60)
ALL (n)	(25 067)		(38 295)		(74 013)		(116 562)		(113 767)		(367 704)	
1 year	90	90	83	83	76	84	69	71	54	59	69	71
3 years	80	80	70	71	60	62	51	55	34	44	52	58
5 years	76	77	64	66	54	56	44	50	25	39	44	53
95% CI	(76-77)	(76-77)	(64-65)	(65-66)	(53-54)	(56-57)	(44-44)	(50-50)	(25-25)	(39-39)	(44-44)	(53-53)

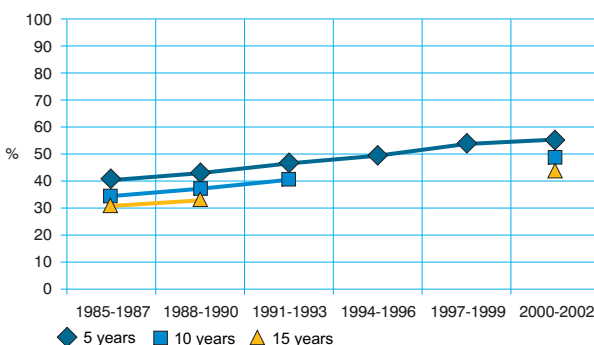
Five-year age-standardised relative survival



Relative survival by Italian Areas



Trend of relative survival Pool of some Italian Registries



→ Ulteriori dati sono disponibili presso: www.registri-tumori.it