

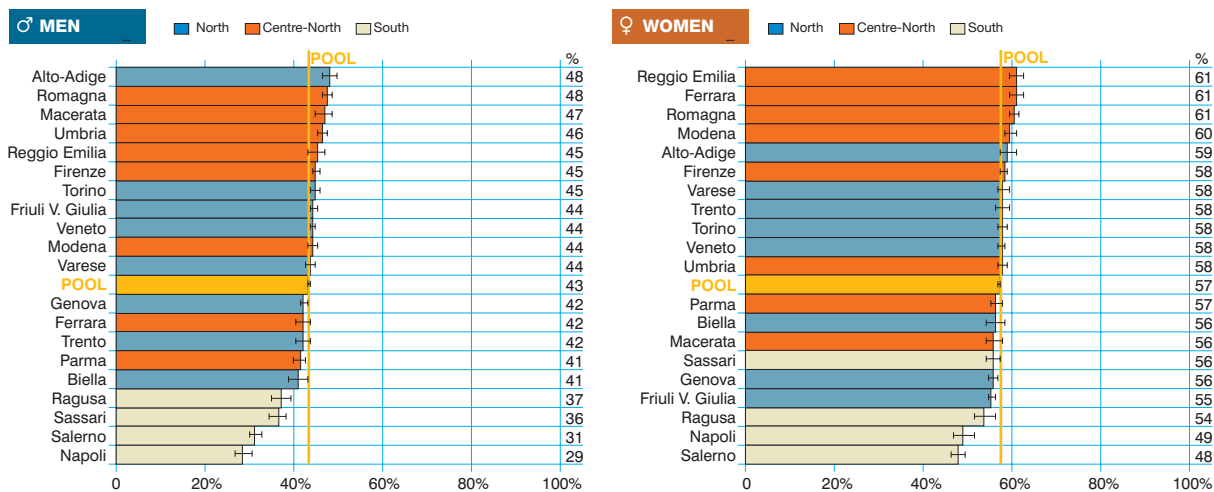
## All sites except C44 and C67

Tutti i tumori esclusi i C44 e i C67

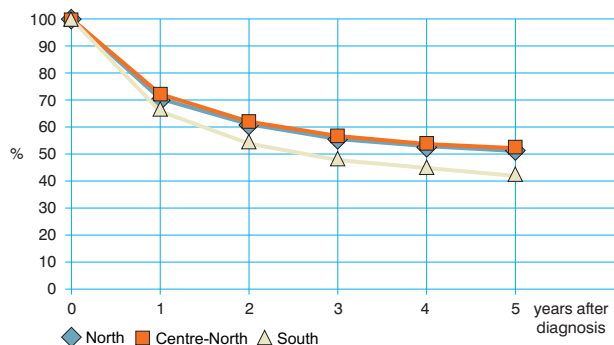
Observed and relative survival (%) by sex and age. Data from the Pool of Italian Cancer Registries follow-up 31.12.2003

	15-44		45-54		55-64		65-74		75+		ALL	
	obs	rel	obs	rel	obs	rel	obs	rel	obs	rel	obs	rel
<b>♂ MEN (n)</b>	<b>(9 503)</b>		<b>(15 092)</b>		<b>(38 069)</b>		<b>(64 069)</b>		<b>(52 505)</b>		<b>(179 238)</b>	
1 year	84	84	72	72	68	69	63	65	52	57	63	65
3 years	72	72	53	54	49	51	44	49	31	42	44	49
<b>5 years</b>	<b>68</b>	<b>69</b>	<b>47</b>	<b>48</b>	<b>42</b>	<b>45</b>	<b>36</b>	<b>43</b>	<b>22</b>	<b>36</b>	<b>36</b>	<b>44</b>
95% CI	(67-69)	(68-70)	(46-48)	(48-49)	(42-43)	(44-45)	(36-37)	(43-43)	(21-22)	(36-37)	(36-36)	(44-44)
<b>♀ WOMEN (n)</b>	<b>(15 106)</b>		<b>(21 788)</b>		<b>(31 959)</b>		<b>(44 785)</b>		<b>(54 161)</b>		<b>(167 799)</b>	
1 year	94	94	90	90	84	85	74	75	54	58	73	75
3 years	85	85	80	81	72	73	58	61	35	44	59	64
<b>5 years</b>	<b>81</b>	<b>81</b>	<b>75</b>	<b>76</b>	<b>65</b>	<b>67</b>	<b>51</b>	<b>55</b>	<b>26</b>	<b>40</b>	<b>52</b>	<b>60</b>
95% CI	(80-81)	(80-81)	(75-76)	(75-77)	(65-66)	(66-68)	(51-51)	(55-56)	(26-27)	(39-40)	(51-52)	(59-60)
<b>ALL (n)</b>	<b>(24 609)</b>		<b>(36 880)</b>		<b>(70 028)</b>		<b>(108 854)</b>		<b>(106 666)</b>		<b>(347 037)</b>	
1 year	90	90	83	83	75	84	68	69	53	57	68	70
3 years	80	80	69	70	59	61	50	54	33	43	51	56
<b>5 years</b>	<b>76</b>	<b>76</b>	<b>64</b>	<b>65</b>	<b>53</b>	<b>55</b>	<b>42</b>	<b>48</b>	<b>24</b>	<b>38</b>	<b>43</b>	<b>52</b>
95% CI	(75-76)	(76-77)	(63-64)	(64-65)	(52-53)	(55-55)	(42-43)	(48-49)	(24-24)	(38-38)	(43-44)	(52-52)

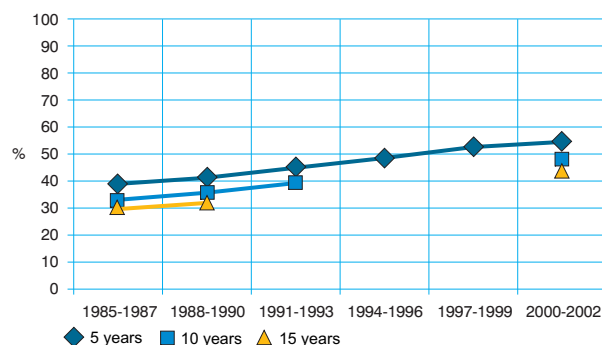
### Five-year age-standardised relative survival



### Relative survival by Italian Areas



### Trend of relative survival Pool of some Italian Registries



→ Ulteriori dati sono disponibili presso: [www.registri-tumori.it](http://www.registri-tumori.it)