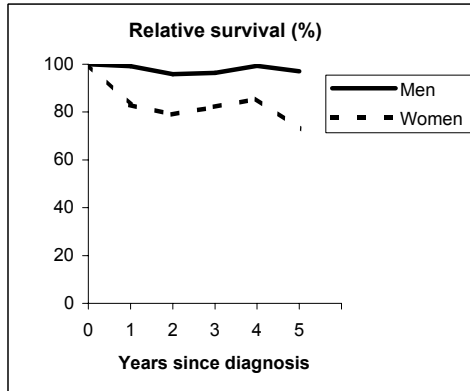


LIP (ICD-IX 140)

TORINO - Incident cases 1990-'94

AGE CLASSES	Men	Women
15-44	1	1
45-54	0	0
55-64	17	3
65-74	14	6
75+	19	5
ALL	51	15

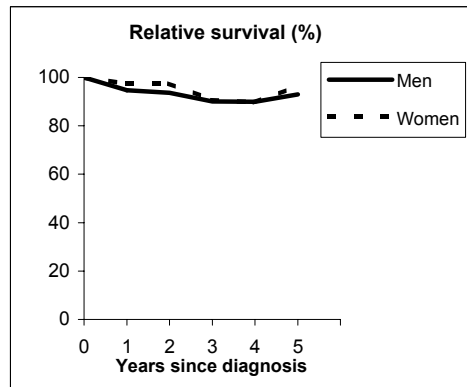


Observed and Relative survival (%)
(in parenthesis 95% confidence limits of 5 years survival)

	Men		Women		ALL	
	<i>obs</i>	<i>rel</i>	<i>obs</i>	<i>rel</i>	<i>obs</i>	<i>rel</i>
1 year	94	99	80	83	91	95
3 years	82	96	73	82	80	93
5 years	75	97	60	73	71	91
95% CI	(61-84)	(80-110)	(36-80)	(43-98)	(59-81)	(76-104)

VENETO - Incident cases 1990-'94

AGE CLASSES	Men	Women
15-44	2	0
45-54	8	0
55-64	32	6
65-74	51	10
75+	61	20
ALL	154	36



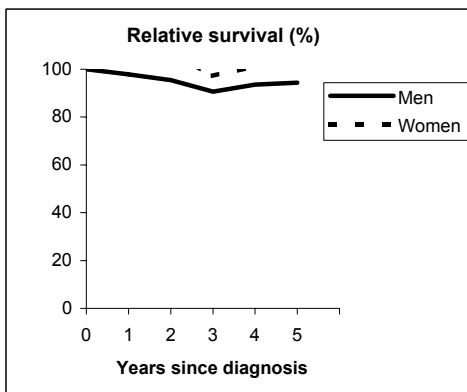
Observed and Relative survival (%)
(in parenthesis 95% confidence limits of 5 years survival)

	Men		Women		ALL	
	<i>obs</i>	<i>rel</i>	<i>obs</i>	<i>rel</i>	<i>obs</i>	<i>rel</i>
1 year	90	95	92	97	90	95
3 years	76	90	75	91	76	90
5 years	69	93	69	97	69	94
95% CI	(62-76)	(83-102)	(53-82)	(74-114)	(62-75)	(84-102)

LIP (ICD-IX 140)

FIRENZE-PRATO - Incident cases 1990-'94

AGE CLASSES	Men	Women
15-44	1	0
45-54	7	1
55-64	12	2
65-74	16	2
75+	22	3
ALL	58	8

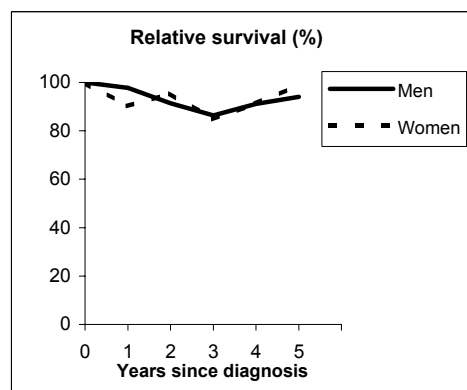


Observed and Relative survival (%)
(in parenthesis 95% confidence limits of 5 years survival)

	Men		Women		ALL	
	<i>obs</i>	<i>rel</i>	<i>obs</i>	<i>rel</i>	<i>obs</i>	<i>rel</i>
1 year	93	98	100	103	94	98
3 years	78	91	88	97	79	91
5 years	72	94	88	106	74	96
95% CI	(59-82)	(78-107)	(53-98)	(64-119)	(62-83)	(81-108)

SASSARI - Incident cases 1992-'94

AGE CLASSES	Men	Women
15-44	2	0
45-54	2	0
55-64	17	0
65-74	19	2
75+	18	5
ALL	58	7



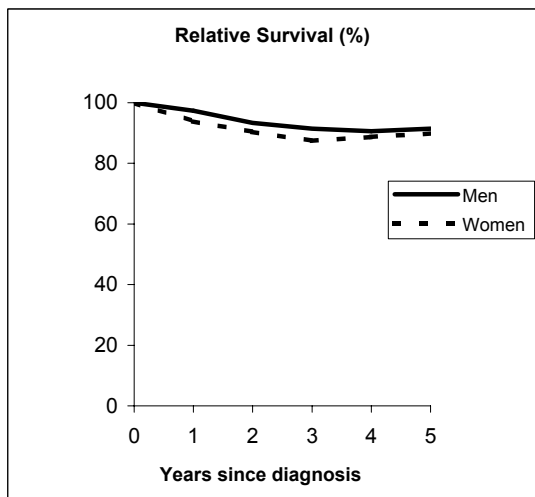
Observed and Relative survival (%)
(in parenthesis 95% confidence limits of 5 years survival)

	Men		Women		ALL	
	<i>obs</i>	<i>rel</i>	<i>obs</i>	<i>rel</i>	<i>obs</i>	<i>rel</i>
1 year	93	98	86	90	92	97
3 years	74	86	71	85	74	86
5 years	72	94	71	99	72	94
95% CI	(60-82)	(78-107)	(36-92)	(50-127)	(60-82)	(79-107)

LIP (ICD-IX 140)

Pool of Italian Registries

REGISTRY	Number of cases		
	Men	Women	Total
Torino	51	15	66
Genova	26	9	35
Varese	44	4	48
Veneto	154	36	190
Parma	6	0	6
Modena	3	1	4
Ferrara	20	4	24
Romagna	7	1	8
Macerata	3	1	4
Firenze-Prato	58	8	66
Umbria	46	8	54
Latina	18	3	21
Sassari	58	7	65
Ragusa	39	10	49
Italy	533	107	640



Observed and relative survival (%) by sex and age classes

	15-44		45-54		55-64		65-74		75+		ALL	
	obs	rel	obs	rel	obs	rel	obs	rel	obs	rel	obs	rel
Men												
1 year	88	88	97	97	96	97	96	98	88	97	93	97
3 years	88	88	94	96	92	96	84	92	62	86	79	91
5 years	88	88	94	97	85	91	75	89	52	93	71	91
95% CI	(53-98)	(53-99)	(81-98)	(83-101)	(78-90)	(84-97)	(68-81)	(80-96)	(45-60)	(81-106)	(67-75)	(86-96)
Women												
1 year	67	67	100	100	100	101	97	98	83	90	90	94
3 years	67	67	100	101	88	89	93	98	60	79	75	87
5 years	67	67	100	101	80	83	93	102	50	83	69	90
95% CI	(21-94)	(21-94)	-	-	(55-93)	(57-97)	(79-98)	(86-107)	(37-63)	(61-104)	(60-77)	(78-100)
Total												
1 year	82	82	97	98	96	97	96	98	87	96	92	97
3 years	82	82	95	96	92	95	85	93	62	84	78	91
5 years	82	83	95	97	84	90	78	91	52	91	71	91
95% CI	(52-95)	(53-96)	(83-99)	(85-101)	(78-89)	(83-96)	(71-83)	(84-97)	(46-58)	(80-102)	(67-74)	(86-96)