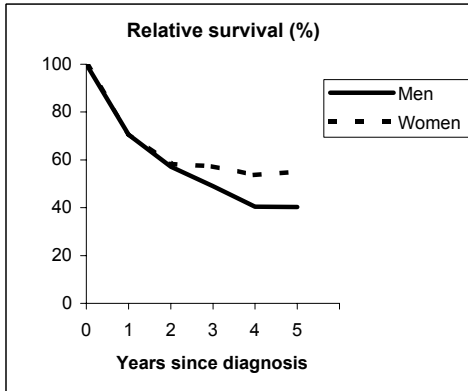


# TONGUE (ICD-IX 141)

## TORINO - Incident cases 1990-'94

AGE CLASSES	Men	Women
15-44	10	1
45-54	17	10
55-64	26	8
65-74	27	10
75+	10	14
<b>ALL</b>	<b>90</b>	<b>43</b>

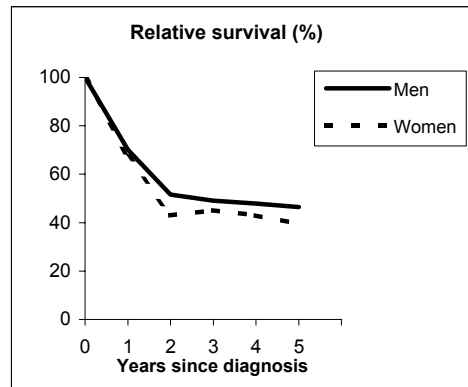


**Observed and Relative survival (%)**  
(in parenthesis 95% confidence limits of 5 years survival)

	Men		Women		ALL	
	<i>obs</i>	<i>rel</i>	<i>obs</i>	<i>rel</i>	<i>obs</i>	<i>rel</i>
1 year	69	71	70	71	69	71
3 years	46	49	53	57	48	52
<b>5 years</b>	<b>36</b>	<b>40</b>	<b>49</b>	<b>55</b>	<b>40</b>	<b>45</b>
95% CI	(26-46)	(30-52)	(35-63)	(39-71)	(32-48)	(36-55)

## GENOVA - Incident cases 1990-'94

AGE CLASSES	Men	Women
15-44	3	1
45-54	12	2
55-64	16	7
65-74	24	7
75+	16	11
<b>ALL</b>	<b>71</b>	<b>28</b>



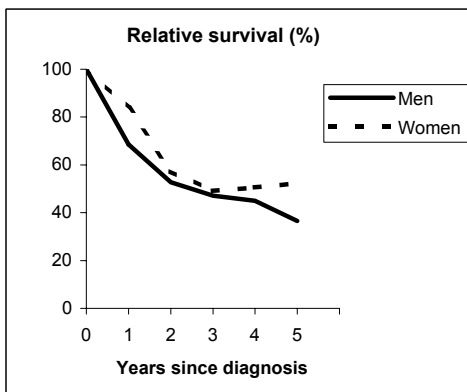
**Observed and Relative survival (%)**  
(in parenthesis 95% confidence limits of 5 years survival)

	Men		Women		ALL	
	<i>obs</i>	<i>rel</i>	<i>obs</i>	<i>rel</i>	<i>obs</i>	<i>rel</i>
1 year	68	70	64	67	67	69
3 years	44	49	39	45	42	48
<b>5 years</b>	<b>38</b>	<b>46</b>	<b>31</b>	<b>39</b>	<b>36</b>	<b>45</b>
95% CI	(28-50)	(34-61)	(17-50)	(21-63)	(27-46)	(34-57)

# TONGUE (ICD-IX 141)

## VARESE - Incident cases 1990-'94

AGE CLASSES	Men	Women
15-44	5	1
45-54	8	0
55-64	19	3
65-74	16	4
75+	12	3
<b>ALL</b>	<b>60</b>	<b>11</b>

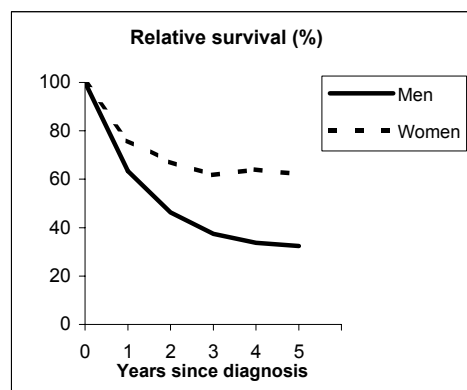


**Observed and Relative survival (%)**  
(in parenthesis 95% confidence limits of 5 years survival)

	Men		Women		ALL	
	<i>obs</i>	<i>rel</i>	<i>obs</i>	<i>rel</i>	<i>obs</i>	<i>rel</i>
1 year	66	69	82	84	69	71
3 years	43	47	45	49	43	47
<b>5 years</b>	<b>31</b>	<b>37</b>	<b>45</b>	<b>52</b>	<b>33</b>	<b>39</b>
95% CI	(20-43)	(24-52)	(21-72)	(24-83)	(23-45)	(27-53)

## VENETO - Incident cases 1990-'94

AGE CLASSES	Men	Women
15-44	17	5
45-54	45	8
55-64	85	12
65-74	63	13
75+	26	19
<b>ALL</b>	<b>236</b>	<b>57</b>



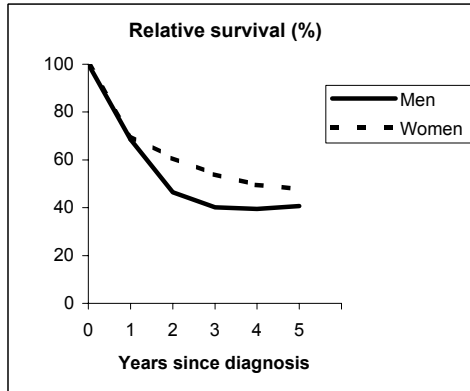
**Observed and Relative survival (%)**  
(in parenthesis 95% confidence limits of 5 years survival)

	Men		Women		ALL	
	<i>obs</i>	<i>rel</i>	<i>obs</i>	<i>rel</i>	<i>obs</i>	<i>rel</i>
1 year	62	63	74	76	64	66
3 years	35	37	56	62	39	42
<b>5 years</b>	<b>28</b>	<b>32</b>	<b>52</b>	<b>62</b>	<b>33</b>	<b>38</b>
95% CI	(23-35)	(26-39)	(39-65)	(47-77)	(28-39)	(32-44)

# TONGUE (ICD-IX 141)

## FIRENZE-PRATO - Incident cases 1990-'94

AGE CLASSES	Men	Women
15-44	8	6
45-54	7	6
55-64	16	7
65-74	15	9
75+	11	11
<b>ALL</b>	<b>57</b>	<b>39</b>

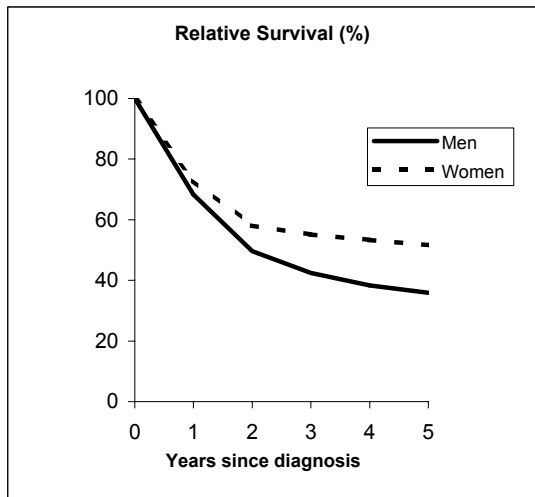


**Observed and Relative survival (%)**  
(in parenthesis 95% confidence limits of 5 years survival)

	<i>Men</i>		<i>Women</i>		<b>ALL</b>	
	<i>obs</i>	<i>rel</i>	<i>obs</i>	<i>rel</i>	<i>obs</i>	<i>rel</i>
1 year	67	69	68	70	67	69
3 years	37	40	50	54	42	46
<b>5 years</b>	<b>35</b>	<b>41</b>	<b>42</b>	<b>48</b>	<b>38</b>	<b>44</b>
95% CI	(24-48)	(28-56)	(28-58)	(31-66)	(29-48)	(33-55)

Pool of Italian Registries

REGISTRY	Number of cases		
	Men	Women	Total
Torino	90	43	133
Genova	71	28	99
Varese	60	11	71
Veneto	236	57	293
Parma	40	14	54
Modena	43	12	55
Ferrara	27	14	41
Romagna	24	12	36
Macerata	11	5	16
Firenze-Prato	57	39	96
Umbria	38	9	47
Latina	21	2	23
Sassari	24	6	30
Ragusa	11	4	15
<b>Italy</b>	<b>753</b>	<b>256</b>	<b>1,009</b>



Observed and relative survival (%) by sex and age classes

	15-44		45-54		55-64		65-74		75+		ALL	
	obs	rel	obs	rel	obs	rel	obs	rel	obs	rel	obs	rel
<b>Men</b>												
1 year	78	78	69	70	70	71	64	66	54	59	67	68
3 years	42	42	41	42	38	40	42	46	33	44	39	42
<b>5 years</b>	<b>37</b>	<b>37</b>	<b>35</b>	<b>36</b>	<b>30</b>	<b>33</b>	<b>32</b>	<b>38</b>	<b>24</b>	<b>39</b>	<b>31</b>	<b>36</b>
95% CI	(26-49)	(26-50)	(28-44)	(28-45)	(25-36)	(27-39)	(26-39)	(31-46)	(16-33)	(27-55)	(28-35)	(32-40)
<b>Women</b>												
1 year	80	80	72	72	81	82	71	72	62	66	71	73
3 years	60	60	59	59	60	61	50	52	38	48	51	55
<b>5 years</b>	<b>60</b>	<b>60</b>	<b>53</b>	<b>54</b>	<b>54</b>	<b>56</b>	<b>46</b>	<b>51</b>	<b>28</b>	<b>43</b>	<b>44</b>	<b>52</b>
95% CI	(39-78)	(39-79)	(38-68)	(38-69)	(41-67)	(42-69)	(34-59)	(38-64)	(20-39)	(30-60)	(38-51)	(45-59)
<b>Total</b>												
1 year	79	79	70	70	72	72	66	67	57	62	68	69
3 years	46	47	45	46	42	44	44	47	35	46	42	46
<b>5 years</b>	<b>42</b>	<b>43</b>	<b>40</b>	<b>40</b>	<b>35</b>	<b>37</b>	<b>35</b>	<b>41</b>	<b>26</b>	<b>41</b>	<b>35</b>	<b>40</b>
95% CI	(32-53)	(33-54)	(32-47)	(33-48)	(29-40)	(31-43)	(30-41)	(35-48)	(20-33)	(32-52)	(32-38)	(36-43)

Five Years Age-adjusted Relative Survival of 1986-89 and 1990-94 incident cases

