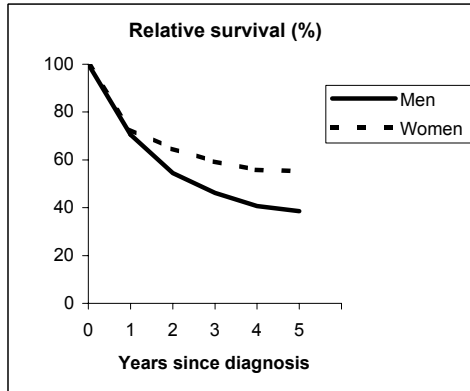


HEAD & NECK (ICD-IX 141, 143-148)

TORINO - Incident cases 1990-'94

AGE CLASSES	Men	Women
15-44	26	3
45-54	60	20
55-64	121	24
65-74	79	27
75+	29	33
ALL	315	107

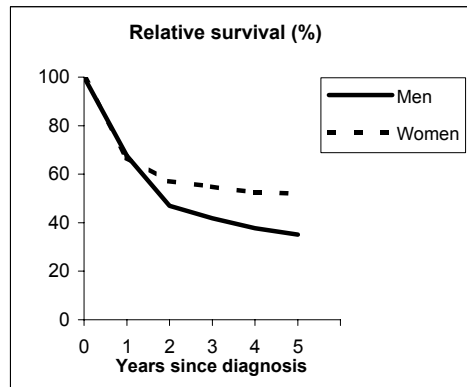


Observed and Relative survival (%)
(in parenthesis 95% confidence limits of 5 years survival)

	Men		Women		ALL	
	obs	rel	obs	rel	obs	rel
1 year	69	71	71	73	70	71
3 years	43	46	55	59	46	50
5 years	34	39	49	55	38	43
95% CI	(29-40)	(33-45)	(39-58)	(45-66)	(33-43)	(38-48)

GENOVA - Incident cases 1990-'94

AGE CLASSES	Men	Women
15-44	11	5
45-54	47	11
55-64	88	14
65-74	85	23
75+	37	42
ALL	268	95



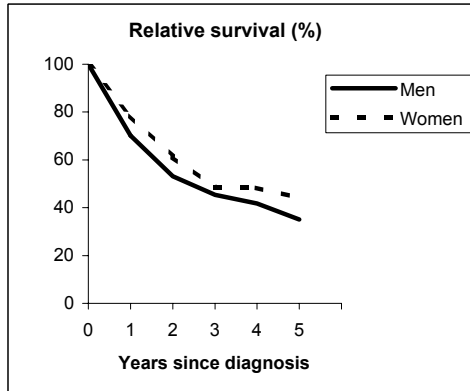
Observed and Relative survival (%)
(in parenthesis 95% confidence limits of 5 years survival)

	Men		Women		ALL	
	obs	rel	obs	rel	obs	rel
1 year	66	68	64	67	65	67
3 years	38	42	48	55	41	45
5 years	30	35	42	52	33	39
95% CI	(25-36)	(29-42)	(33-52)	(40-65)	(29-38)	(34-45)

HEAD & NECK (ICD-IX 141, 143-148)

VARESE - Incident cases 1990-'94

AGE CLASSES	Men	Women
15-44	15	7
45-54	71	5
55-64	101	14
65-74	74	14
75+	32	19
ALL	293	59

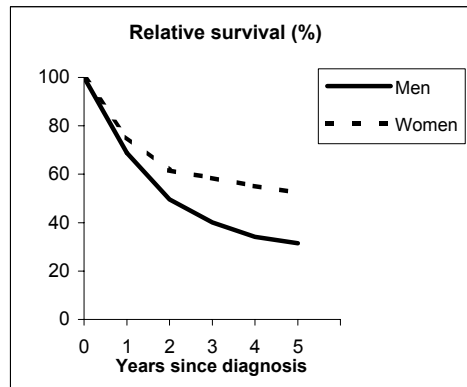


Observed and Relative survival (%)
(in parenthesis 95% confidence limits of 5 years survival)

	Men		Women		ALL	
	obs	rel	obs	rel	obs	rel
1 year	69	70	76	79	70	72
3 years	42	45	44	48	42	46
5 years	31	35	37	44	32	37
95% CI	(26-36)	(29-41)	(26-50)	(31-59)	(27-37)	(31-42)

VENETO - Incident cases 1990-'94

AGE CLASSES	Men	Women
15-44	69	19
45-54	200	41
55-64	325	57
65-74	227	50
75+	106	60
ALL	927	227



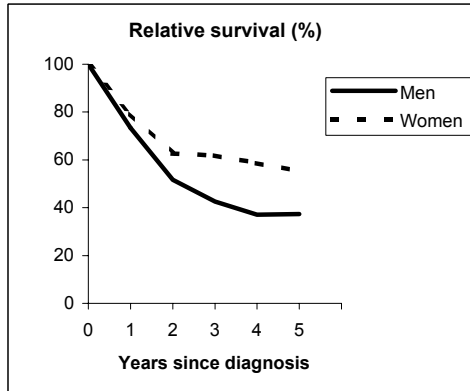
Observed and Relative survival (%)
(in parenthesis 95% confidence limits of 5 years survival)

	Men		Women		ALL	
	obs	rel	obs	rel	obs	rel
1 year	67	69	74	75	68	70
3 years	37	40	54	58	41	44
5 years	28	32	46	52	31	36
95% CI	(25-31)	(28-35)	(39-52)	(45-60)	(29-34)	(33-39)

HEAD & NECK (ICD-IX 141, 143-148)

PARMA - Incident cases 1990-'94

AGE CLASSES	Men	Women
15-44	19	3
45-54	37	5
55-64	55	10
65-74	38	14
75+	17	13
ALL	166	45

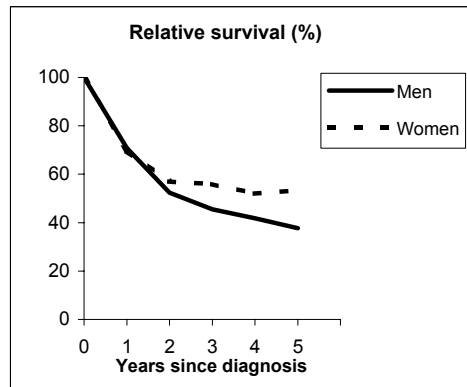


Observed and Relative survival (%)
(in parenthesis 95% confidence limits of 5 years survival)

	Men		Women		ALL	
	<i>obs</i>	<i>rel</i>	<i>obs</i>	<i>rel</i>	<i>obs</i>	<i>rel</i>
1 year	72	73	78	79	73	75
3 years	40	43	58	62	44	47
5 years	33	37	49	55	36	41
95% CI	(26-41)	(30-46)	(35-63)	(40-71)	(30-43)	(34-49)

MODENA - Incident cases 1990-'94

AGE CLASSES	Men	Women
15-44	11	6
45-54	29	10
55-64	57	7
65-74	49	9
75+	19	12
ALL	165	44



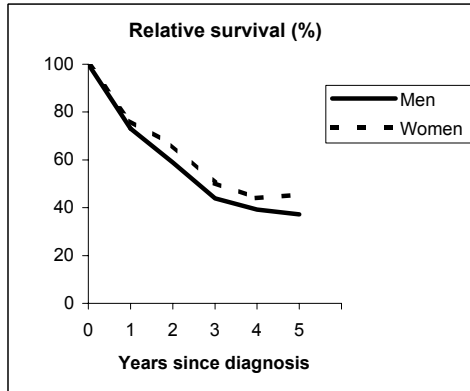
Observed and Relative survival (%)
(in parenthesis 95% confidence limits of 5 years survival)

	Men		Women		ALL	
	<i>obs</i>	<i>rel</i>	<i>obs</i>	<i>rel</i>	<i>obs</i>	<i>rel</i>
1 year	69	71	68	70	69	71
3 years	42	46	52	56	44	48
5 years	33	38	47	53	36	41
95% CI	(27-41)	(30-46)	(33-62)	(38-70)	(30-43)	(34-49)

HEAD & NECK (ICD-IX 141, 143-148)

FERRARA - Incident cases 1990-'94

AGE CLASSES	Men	Women
15-44	6	4
45-54	10	5
55-64	41	10
65-74	39	13
75+	15	11
ALL	111	43

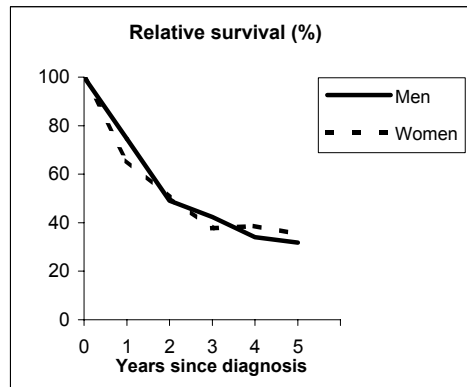


Observed and Relative survival (%)
(in parenthesis 95% confidence limits of 5 years survival)

	Men		Women		ALL	
	obs	rel	obs	rel	obs	rel
1 year	71	73	74	76	72	74
3 years	40	44	47	50	42	46
5 years	32	37	40	45	34	40
95% CI	(24-41)	(28-48)	(26-54)	(30-62)	(27-42)	(31-49)

ROMAGNA - Incident cases 1990-'94

AGE CLASSES	Men	Women
15-44	4	0
45-54	13	4
55-64	31	7
65-74	18	9
75+	15	11
ALL	81	31



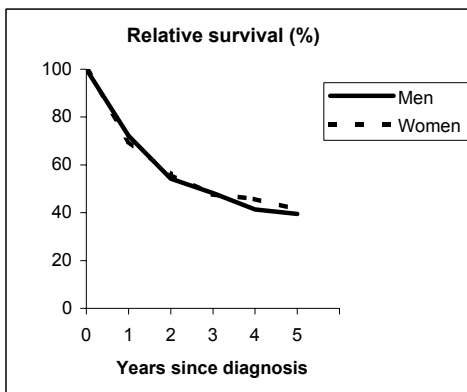
Observed and Relative survival (%)
(in parenthesis 95% confidence limits of 5 years survival)

	Men		Women		ALL	
	obs	rel	obs	rel	obs	rel
1 year	73	75	65	66	71	72
3 years	40	42	35	38	38	41
5 years	28	32	32	35	29	33
95% CI	(19-39)	(22-44)	(18-49)	(20-55)	(21-38)	(24-43)

HEAD & NECK (ICD-IX 141, 143-8)

FIRENZE-PRATO - Incident cases 1990-'94

AGE CLASSES	Men	Women
15-44	24	15
45-54	54	16
55-64	80	32
65-74	73	28
75+	40	41
ALL	271	132

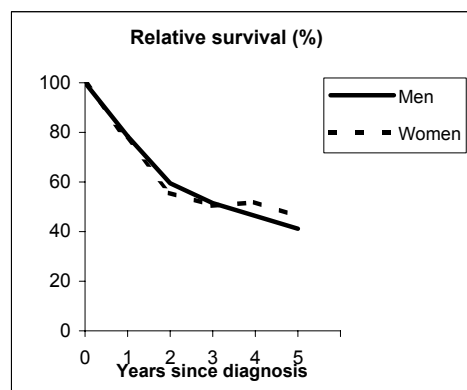


Observed and Relative survival (%)
(in parenthesis 95% confidence limits of 5 years survival)

	Men		Women		ALL	
	obs	rel	obs	rel	obs	rel
1 year	70	72	68	70	70	71
3 years	45	48	44	48	44	48
5 years	34	39	35	41	35	40
95% CI	(29-40)	(33-46)	(28-44)	(32-51)	(30-40)	(35-46)

UMBRIA - Incident cases 1994-'96

AGE CLASSES	Men	Women
15-44	7	9
45-54	15	1
55-64	51	6
65-74	48	10
75+	24	6
ALL	145	32



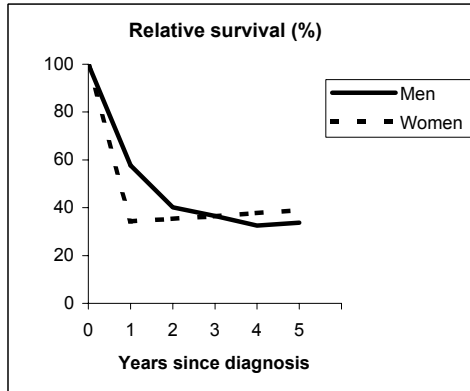
Observed and Relative survival (%)
(in parenthesis 95% confidence limits of 5 years survival)

	Men		Women		ALL	
	obs	rel	obs	rel	obs	rel
1 year	77	78	75	77	76	78
3 years	48	52	47	50	47	51
5 years	36	41	40	46	37	42
95% CI	(28-45)	(32-51)	(24-59)	(27-68)	(29-45)	(34-51)

HEAD & NECK (ICD-IX 141, 143-148)

LATINA - Incident cases 1990-'94

AGE CLASSES	Men	Women
15-44	3	1
45-54	11	0
55-64	24	4
65-74	20	1
75+	8	3
ALL	66	9

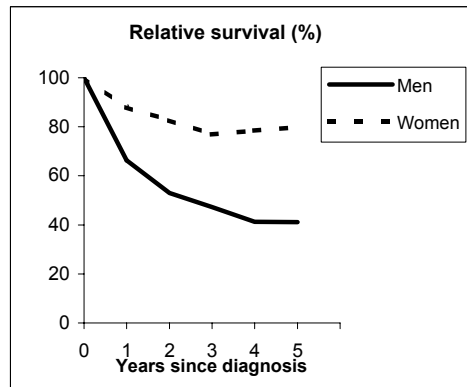


Observed and Relative survival (%)
(in parenthesis 95% confidence limits of 5 years survival)

	Men		Women		ALL	
	obs	rel	obs	rel	obs	rel
1 year	56	58	33	34	53	55
3 years	33	36	33	36	33	36
5 years	29	34	33	39	29	34
95% CI	(19-41)	(23-48)	(12-65)	(14-76)	(20-40)	(24-47)

SASSARI - Incident cases 1992-'94

AGE CLASSES	Men	Women
15-44	10	2
45-54	17	5
55-64	35	3
65-74	19	2
75+	10	2
ALL	91	14



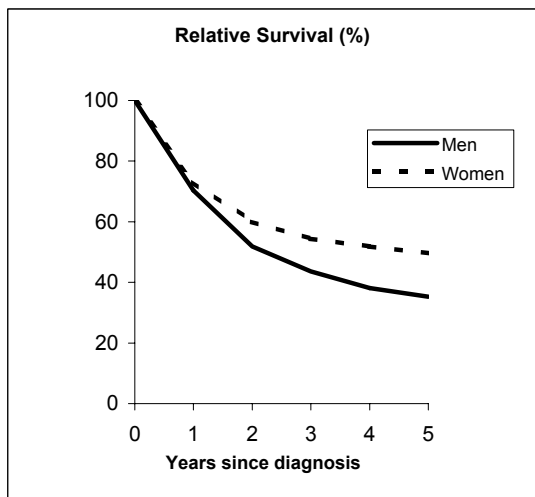
Observed and Relative survival (%)
(in parenthesis 95% confidence limits of 5 years survival)

	Men		Women		ALL	
	obs	rel	obs	rel	obs	rel
1 year	65	66	86	88	68	69
3 years	44	47	71	77	48	51
5 years	36	41	71	80	41	46
95% CI	(27-47)	(31-53)	(45-88)	(51-99)	(32-51)	(36-57)

HEAD & NECK (ICD-IX 141, 143-8)

Pool of Italian Registries

REGISTRY	Number of cases		
	Men	Women	Total
Torino	315	107	422
Genova	268	95	363
Varese	293	59	352
Veneto	927	227	1,154
Parma	166	45	211
Modena	165	44	209
Ferrara	111	43	154
Romagna	81	31	112
Macerata	25	16	41
Firenze-Prato	271	132	403
Umbria	145	32	177
Latina	66	9	75
Sassari	91	14	105
Ragusa	30	13	43
Italy	2,954	867	3,821



Observed and relative survival (%) by sex and age classes

	15-44		45-54		55-64		65-74		75+		ALL	
	obs	rel	obs	rel	obs	rel	obs	rel	obs	rel	obs	rel
Men												
1 year	81	81	75	76	73	74	63	64	51	55	69	70
3 years	53	53	46	47	42	44	38	41	27	35	41	44
5 years	45	45	37	38	33	35	27	32	17	28	31	35
95% CI	(38-52)	(39-52)	(34-41)	(44-61)	(30-36)	(32-38)	(24-30)	(28-36)	(13-21)	(22-35)	(29-33)	(33-37)
Women												
1 year	83	83	79	79	82	82	74	75	54	58	71	73
3 years	66	66	57	57	60	61	50	53	34	43	50	54
5 years	60	60	53	53	54	56	42	46	25	39	43	50
95% CI	(48-70)	(49-71)	(44-61)	(45-62)	(47-61)	(49-63)	(35-49)	(39-54)	(21-31)	(31-48)	(40-46)	(46-53)
Total												
1 year	81	81	76	76	75	76	65	67	52	57	69	71
3 years	56	56	48	49	45	46	40	44	30	39	43	46
5 years	49	49	40	41	36	39	30	35	21	33	34	38
95% CI	(43-55)	(44-55)	(37-44)	(37-45)	(33-39)	(36-42)	(27-33)	(32-38)	(18-24)	(28-38)	(32-35)	(37-40)

Five Years Age-adjusted Relative Survival of 1986-89 and 1990-94 incident cases

