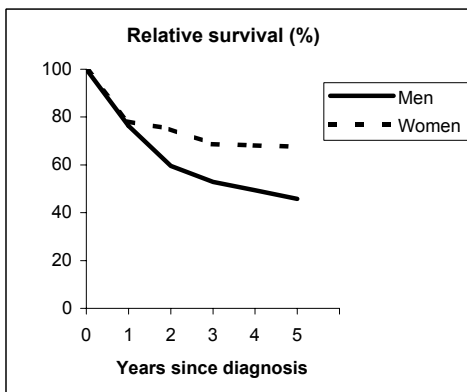


# ORAL CAVITY (ICD-IX 143-5)

## TORINO - Incident cases 1990-'94

AGE CLASSES	Men	Women
15-44	4	1
45-54	15	6
55-64	40	9
65-74	20	6
75+	12	15
<b>ALL</b>	<b>91</b>	<b>37</b>

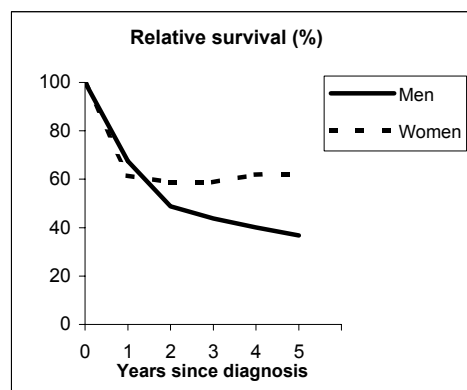


**Observed and Relative survival (%)**  
(in parenthesis 95% confidence limits of 5 years survival)

	Men		Women		ALL	
	<i>obs</i>	<i>rel</i>	<i>obs</i>	<i>rel</i>	<i>obs</i>	<i>rel</i>
1 year	74	76	76	78	75	77
3 years	49	53	62	69	53	57
<b>5 years</b>	<b>40</b>	<b>46</b>	<b>57</b>	<b>68</b>	<b>45</b>	<b>52</b>
95% CI	(30-50)	(35-58)	(41-71)	(49-85)	(37-54)	(42-62)

## GENOVA - Incident cases 1990-'94

AGE CLASSES	Men	Women
15-44	4	0
45-54	14	3
55-64	20	3
65-74	22	10
75+	7	23
<b>ALL</b>	<b>67</b>	<b>39</b>



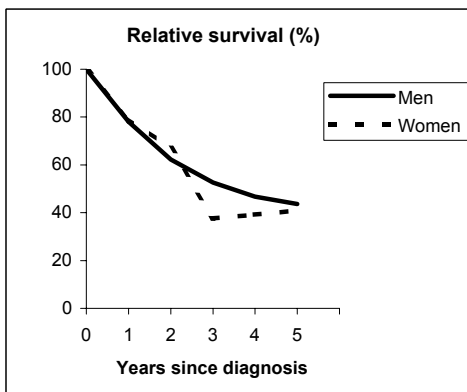
**Observed and Relative survival (%)**  
(in parenthesis 95% confidence limits of 5 years survival)

	Men		Women		ALL	
	<i>obs</i>	<i>rel</i>	<i>obs</i>	<i>rel</i>	<i>obs</i>	<i>rel</i>
1 year	66	67	59	61	63	65
3 years	40	44	51	59	44	49
<b>5 years</b>	<b>32</b>	<b>37</b>	<b>49</b>	<b>62</b>	<b>38</b>	<b>46</b>
95% CI	(22-44)	(25-51)	(34-64)	(43-82)	(30-48)	(35-57)

# ORAL CAVITY (ICD-IX 143-5)

## VARESE - Incident cases 1990-'94

AGE CLASSES	Men	Women
15-44	4	3
45-54	24	3
55-64	26	4
65-74	17	4
75+	6	7
<b>ALL</b>	<b>77</b>	<b>21</b>

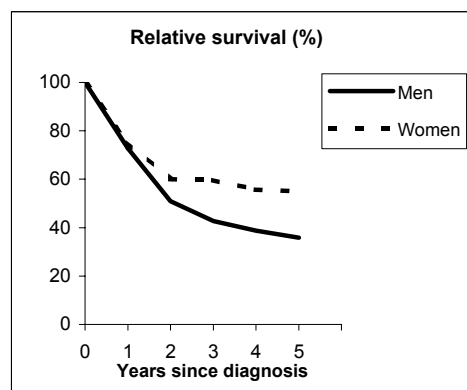


**Observed and Relative survival (%)**  
(in parenthesis 95% confidence limits of 5 years survival)

	Men		Women		ALL	
	obs	rel	obs	rel	obs	rel
1 year	77	78	76	79	77	78
3 years	49	53	33	38	46	49
<b>5 years</b>	<b>39</b>	<b>44</b>	<b>33</b>	<b>41</b>	<b>38</b>	<b>43</b>
95% CI	(29-50)	(32-56)	(17-55)	(21-67)	(29-48)	(33-54)

## VENETO - Incident cases 1990-'94

AGE CLASSES	Men	Women
15-44	27	4
45-54	73	19
55-64	118	20
65-74	79	24
75+	41	30
<b>ALL</b>	<b>338</b>	<b>97</b>



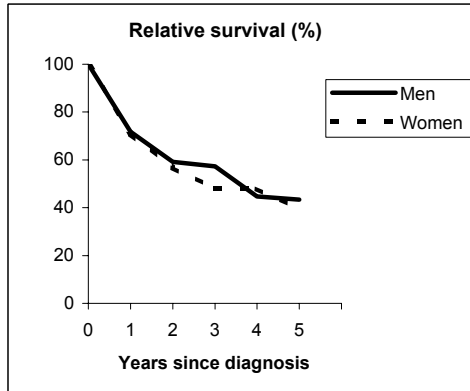
**Observed and Relative survival (%)**  
(in parenthesis 95% confidence limits of 5 years survival)

	Men		Women		ALL	
	obs	rel	obs	rel	obs	rel
1 year	71	73	73	75	71	73
3 years	40	43	55	60	43	46
<b>5 years</b>	<b>31</b>	<b>36</b>	<b>47</b>	<b>55</b>	<b>35</b>	<b>40</b>
95% CI	(27-37)	(30-42)	(38-57)	(44-67)	(31-40)	(35-45)

# ORAL CAVITY (ICD-IX 143-5)

FIRENZE-PRATO - Incident cases 1990-'94

AGE CLASSES	Men	Women
15-44	5	4
45-54	19	2
55-64	19	10
65-74	27	9
75+	16	25
<b>ALL</b>	<b>86</b>	<b>50</b>



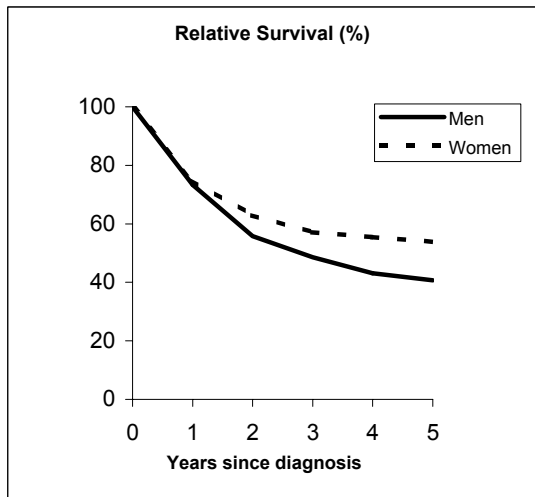
**Observed and Relative survival (%)**  
(in parenthesis 95% confidence limits of 5 years survival)

	<i>Men</i>		<i>Women</i>		<b>ALL</b>	
	<i>obs</i>	<i>rel</i>	<i>obs</i>	<i>rel</i>	<i>obs</i>	<i>rel</i>
1 year	70	72	68	71	69	71
3 years	52	57	42	48	49	54
<b>5 years</b>	<b>37</b>	<b>43</b>	<b>31</b>	<b>39</b>	<b>35</b>	<b>42</b>
95% CI	(27-48)	(32-56)	(20-45)	(25-57)	(27-43)	(33-52)

# ORAL CAVITY (ICD-IX 143-5)

## Pool of Italian Registries

REGISTRY	Number of cases		
	Men	Women	Total
Torino	91	37	128
Genova	67	39	106
Varese	77	21	98
Veneto	338	97	435
Parma	37	18	55
Modena	36	18	54
Ferrara	37	14	51
Romagna	21	7	28
Macerata	6	8	14
Firenze-Prato	86	50	136
Umbria	50	14	64
Latina	17	5	22
Sassari	42	4	46
Ragusa	7	2	9
<b>Italy</b>	<b>912</b>	<b>334</b>	<b>1,246</b>



### Observed and relative survival (%) by sex and age classes

	15-44		45-54		55-64		65-74		75+		ALL	
	obs	rel	obs	rel	obs	rel	obs	rel	obs	rel	obs	rel
<b>Men</b>												
1 year	79	79	80	80	77	78	66	67	54	59	72	73
3 years	57	57	48	49	46	48	43	48	35	47	45	49
<b>5 years</b>	<b>51</b>	<b>51</b>	<b>41</b>	<b>42</b>	<b>37</b>	<b>40</b>	<b>33</b>	<b>39</b>	<b>22</b>	<b>36</b>	<b>36</b>	<b>41</b>
95% CI	(39-62)	(39-63)	(34-48)	(35-49)	(32-42)	(34-46)	(27-39)	(32-47)	(15-30)	(25-50)	(33-39)	(37-44)
<b>Women</b>												
1 year	74	74	88	89	91	92	75	76	55	59	72	75
3 years	47	48	65	66	74	76	56	59	33	42	52	57
<b>5 years</b>	<b>47</b>	<b>48</b>	<b>58</b>	<b>59</b>	<b>71</b>	<b>74</b>	<b>46</b>	<b>50</b>	<b>26</b>	<b>40</b>	<b>45</b>	<b>54</b>
95% CI	(27-68)	(27-69)	(43-72)	(44-73)	(60-81)	(62-83)	(35-58)	(39-63)	(19-34)	(29-52)	(40-51)	(48-60)
<b>Total</b>												
1 year	78	78	81	82	79	80	68	70	54	59	72	74
3 years	55	55	52	52	51	53	46	50	34	44	47	51
<b>5 years</b>	<b>50</b>	<b>50</b>	<b>44</b>	<b>45</b>	<b>43</b>	<b>46</b>	<b>36</b>	<b>42</b>	<b>24</b>	<b>38</b>	<b>38</b>	<b>44</b>
95% CI	(39-60)	(40-61)	(38-51)	(39-52)	(38-48)	(41-51)	(31-42)	(36-49)	(19-29)	(30-47)	(35-41)	(41-47)

### Five Years Age-adjusted Relative Survival of 1986-89 and 1990-94 incident cases

