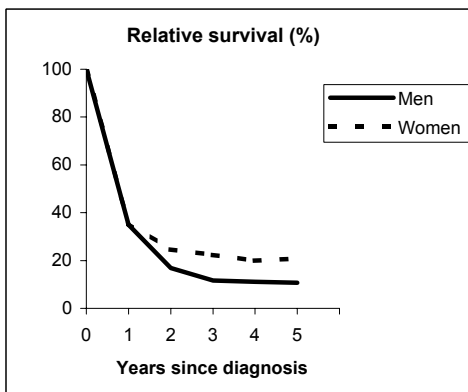


OESOPHAGUS (ICD-IX 150)

TORINO - Incident cases 1990-'94

AGE CLASSES	Men	Women
15-44	5	0
45-54	20	2
55-64	38	12
65-74	45	6
75+	25	15
ALL	133	35

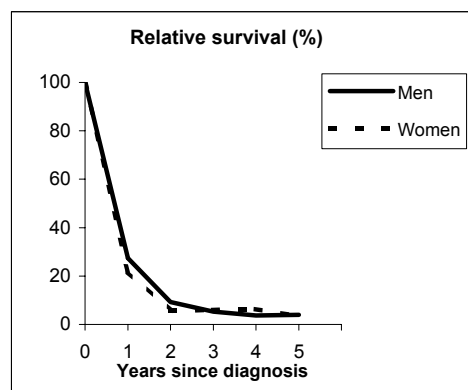


Observed and Relative survival (%)
(in parenthesis 95% confidence limits of 5 years survival)

	Men		Women		ALL	
	<i>obs</i>	<i>rel</i>	<i>obs</i>	<i>rel</i>	<i>obs</i>	<i>rel</i>
1 year	34	35	34	36	34	35
3 years	11	12	20	22	13	14
5 years	9	11	17	21	11	13
95% CI	(5-15)	(6-18)	(8-33)	(10-40)	(7-16)	(8-19)

GENOVA - Incident cases 1990-'94

AGE CLASSES	Men	Women
15-44	2	1
45-54	14	5
55-64	29	7
65-74	52	3
75+	33	22
ALL	130	38



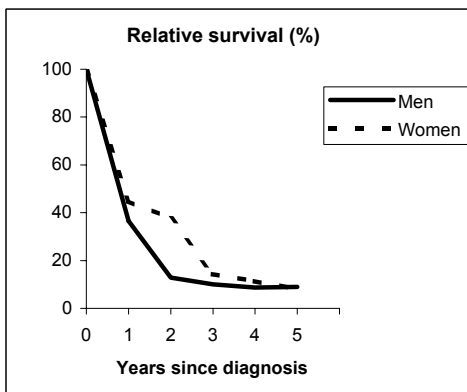
Observed and Relative survival (%)
(in parenthesis 95% confidence limits of 5 years survival)

	Men		Women		ALL	
	<i>obs</i>	<i>rel</i>	<i>obs</i>	<i>rel</i>	<i>obs</i>	<i>rel</i>
1 year	26	27	21	22	25	26
3 years	5	5	5	6	5	5
5 years	3	4	3	3	3	4
95% CI	(1-8)	(2-10)	(0-13)	(1-17)	(1-7)	(2-9)

OESOPHAGUS (ICD-IX 150)

VARESE - Incident cases 1990-'94

AGE CLASSES	Men	Women
15-44	5	1
45-54	19	1
55-64	46	7
65-74	40	7
75+	23	19
ALL	133	35

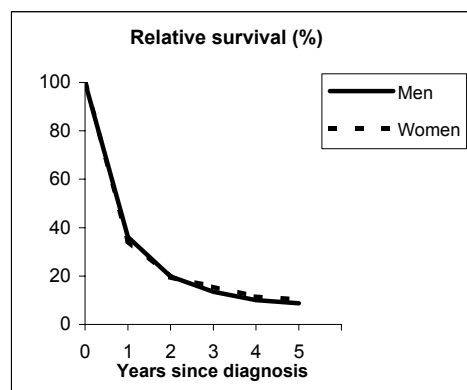


Observed and Relative survival (%)
(in parenthesis 95% confidence limits of 5 years survival)

	Men		Women		ALL	
	<i>obs</i>	<i>rel</i>	<i>obs</i>	<i>rel</i>	<i>obs</i>	<i>rel</i>
1 year	35	37	43	45	37	38
3 years	9	10	12	14	10	11
5 years	8	9	6	8	7	9
95% CI	(4-13)	(5-16)	(2-20)	(2-26)	(4-12)	(5-15)

VENETO - Incident cases 1990-'94

AGE CLASSES	Men	Women
15-44	19	0
45-54	110	10
55-64	186	30
65-74	203	42
75+	110	62
ALL	628	144



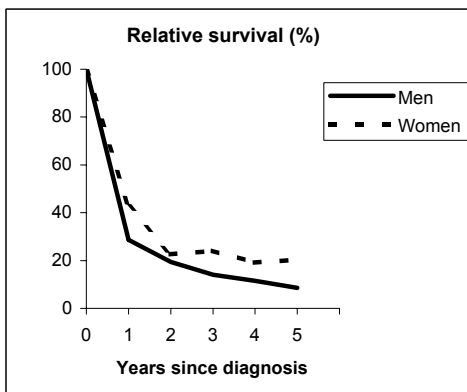
Observed and Relative survival (%)
(in parenthesis 95% confidence limits of 5 years survival)

	Men		Women		ALL	
	<i>obs</i>	<i>rel</i>	<i>obs</i>	<i>rel</i>	<i>obs</i>	<i>rel</i>
1 year	35	36	33	35	35	36
3 years	12	14	14	16	13	14
5 years	7	9	8	10	8	9
95% CI	(6-10)	(7-11)	(5-14)	(6-17)	(6-10)	(7-11)

OESOPHAGUS (ICD-IX 150)

PARMA - Incident cases 1990-'94

AGE CLASSES	Men	Women
15-44	3	1
45-54	8	1
55-64	22	3
65-74	19	6
75+	21	9
ALL	73	20

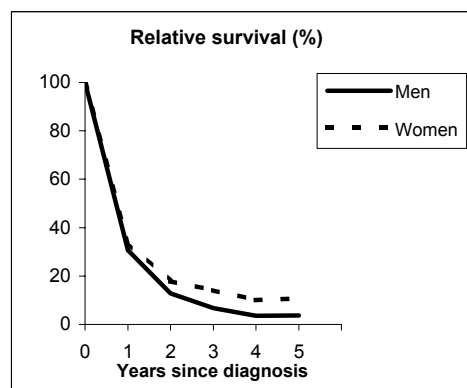


Observed and Relative survival (%)
(in parenthesis 95% confidence limits of 5 years survival)

	Men		Women		ALL	
	<i>obs</i>	<i>rel</i>	<i>obs</i>	<i>rel</i>	<i>obs</i>	<i>rel</i>
1 year	27	29	40	43	30	32
3 years	12	14	20	24	14	16
5 years	7	9	15	20	8	11
95% CI	(3-15)	(4-19)	(5-36)	(7-49)	(4-16)	(5-20)

MODENA - Incident cases 1990-'94

AGE CLASSES	Men	Women
15-44	3	0
45-54	11	2
55-64	16	4
65-74	17	6
75+	21	13
ALL	68	25



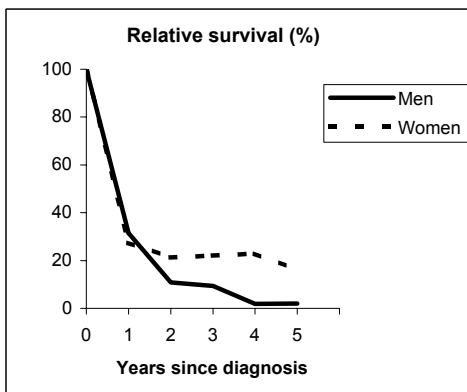
Observed and Relative survival (%)
(in parenthesis 95% confidence limits of 5 years survival)

	Men		Women		ALL	
	<i>obs</i>	<i>rel</i>	<i>obs</i>	<i>rel</i>	<i>obs</i>	<i>rel</i>
1 year	29	31	32	34	30	32
3 years	6	7	12	14	8	9
5 years	3	4	8	11	4	5
95% CI	(1-10)	(1-13)	(2-25)	(3-33)	(2-11)	(2-13)

OESOPHAGUS (ICD-IX 150)

FERRARA - Incident cases 1990-'94

AGE CLASSES	Men	Women
15-44	3	0
45-54	7	2
55-64	20	2
65-74	21	3
75+	8	8
ALL	59	15

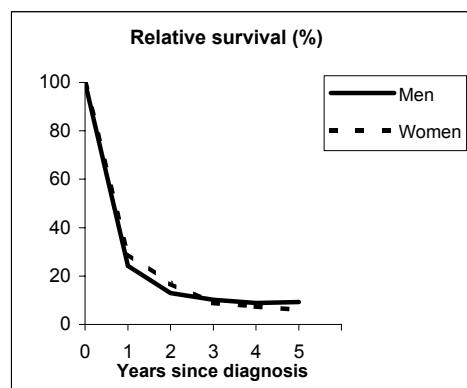


Observed and Relative survival (%)
(in parenthesis 95% confidence limits of 5 years survival)

	Men		Women		ALL	
	obs	rel	obs	rel	obs	rel
1 year	31	31	27	27	30	31
3 years	8	9	20	22	11	12
5 years	2	2	13	16	4	5
95% CI	(0-9)	(0-11)	(4-38)	(4-46)	(1-11)	(2-13)

FIRENZE-PRATO - Incident cases 1990-'94

AGE CLASSES	Men	Women
15-44	3	2
45-54	14	3
55-64	36	9
65-74	43	18
75+	39	32
ALL	135	64



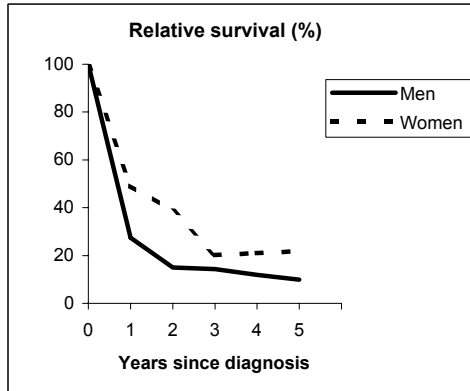
Observed and Relative survival (%)
(in parenthesis 95% confidence limits of 5 years survival)

	Men		Women		ALL	
	obs	rel	obs	rel	obs	rel
1 year	23	24	28	29	25	26
3 years	9	10	8	9	9	10
5 years	7	9	5	6	7	8
95% CI	(4-13)	(5-16)	(2-13)	(2-16)	(4-11)	(5-14)

OESOPHAGUS (ICD-IX 150)

UMBRIA - Incident cases 1994-'96

AGE CLASSES	Men	Women
15-44	1	1
45-54	9	0
55-64	23	2
65-74	25	8
75+	22	6
ALL	80	17



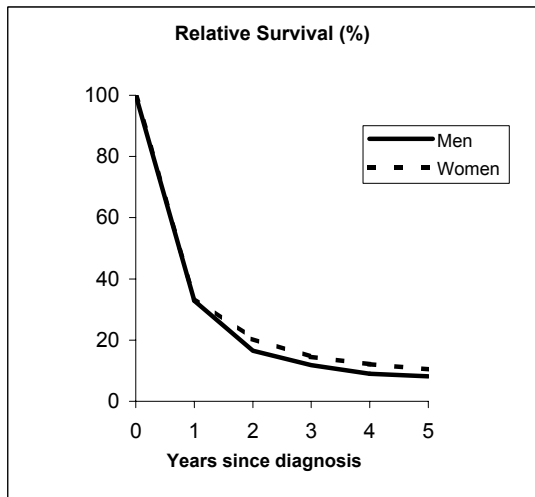
Observed and Relative survival (%)
(in parenthesis 95% confidence limits of 5 years survival)

	<i>Men</i>		<i>Women</i>		ALL	
	<i>obs</i>	<i>rel</i>	<i>obs</i>	<i>rel</i>	<i>obs</i>	<i>rel</i>
1 year	26	27	47	49	30	31
3 years	13	14	18	20	13	15
5 years	8	10	18	22	10	12
95% CI	(4-17)	(5-21)	(6-41)	(8-51)	(5-18)	(6-22)

OESOPHAGUS (ICD-IX 150)

Pool of Italian Registries

REGISTRY	Number of cases		
	Men	Women	Total
Torino	133	35	168
Genova	130	38	168
Varese	133	35	168
Veneto	628	144	772
Parma	73	20	93
Modena	68	25	93
Ferrara	59	15	74
Romagna	39	15	54
Macerata	17	5	22
Firenze-Prato	135	64	199
Umbria	80	17	97
Latina	25	5	30
Sassari	29	4	33
Ragusa	19	4	23
Italy	1,568	426	1,994



Observed and relative survival (%) by sex and age classes

	15-44		45-54		55-64		65-74		75+		ALL	
	obs	rel	obs	rel	obs	rel	obs	rel	obs	rel	obs	rel
Men												
1 year	32	32	40	40	37	37	31	32	20	22	32	33
3 years	15	15	10	10	14	14	11	12	6	8	11	12
5 years	13	13	8	8	9	9	7	8	3	5	7	8
95% CI	(6-25)	(6-25)	(5-13)	(6-13)	(6-12)	(7-12)	(5-9)	(6-11)	(2-5)	(3-9)	(6-8)	(7-10)
Women												
1 year	50	50	50	50	41	41	44	45	19	21	32	34
3 years	0	0	20	20	19	20	19	19	6	8	13	15
5 years	0	0	17	17	13	13	14	15	3	5	8	11
95% CI	-	-	(7-34)	(7-34)	(7-22)	(7-23)	(8-21)	(9-23)	(1-6)	(2-10)	(6-11)	(8-14)
Total												
1 year	34	34	41	41	37	38	34	34	20	22	32	33
3 years	13	13	12	12	14	15	12	13	6	8	11	12
5 years	11	11	9	9	9	10	8	9	3	5	7	9
95% CI	(5-23)	(5-23)	(6-13)	(6-14)	(7-12)	(7-13)	(6-10)	(7-12)	(2-5)	(3-8)	(6-8)	(7-10)

Five Years Age-adjusted Relative Survival of 1986-89 and 1990-94 incident cases

