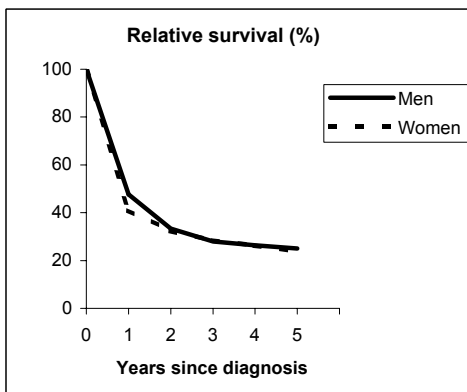


# STOMACH (ICD-IX 151)

## TORINO - Incident cases 1990-'94

AGE CLASSES	Men	Women
15-44	21	11
45-54	53	33
55-64	154	59
65-74	186	101
75+	189	234
<b>ALL</b>	<b>603</b>	<b>438</b>

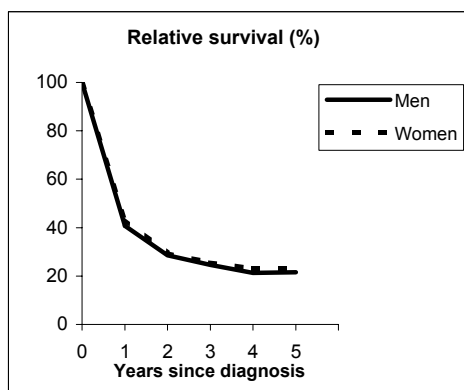


**Observed and Relative survival (%)**  
(in parenthesis 95% confidence limits of 5 years survival)

	Men		Women		ALL	
	<i>obs</i>	<i>rel</i>	<i>obs</i>	<i>rel</i>	<i>obs</i>	<i>rel</i>
1 year	46	48	39	41	43	45
3 years	25	28	25	28	25	28
<b>5 years</b>	<b>20</b>	<b>25</b>	<b>19</b>	<b>24</b>	<b>19</b>	<b>25</b>
95% CI	(17-23)	(21-29)	(15-23)	(19-29)	(17-22)	(22-28)

## GENOVA - Incident cases 1990-'94

AGE CLASSES	Men	Women
15-44	9	6
45-54	44	28
55-64	108	41
65-74	158	73
75+	223	227
<b>ALL</b>	<b>542</b>	<b>375</b>



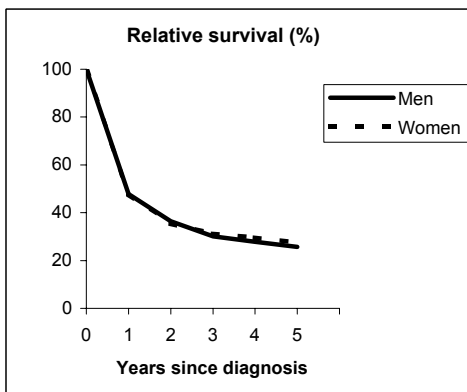
**Observed and Relative survival (%)**  
(in parenthesis 95% confidence limits of 5 years survival)

	Men		Women		ALL	
	<i>obs</i>	<i>rel</i>	<i>obs</i>	<i>rel</i>	<i>obs</i>	<i>rel</i>
1 year	39	41	42	44	40	42
3 years	21	25	22	26	21	25
<b>5 years</b>	<b>16</b>	<b>22</b>	<b>17</b>	<b>23</b>	<b>17</b>	<b>22</b>
95% CI	(13-19)	(18-26)	(14-22)	(18-29)	(14-19)	(19-26)

# STOMACH (ICD-IX 151)

## VARESE - Incident cases 1990-'94

AGE CLASSES	Men	Women
15-44	35	20
45-54	81	33
55-64	151	65
65-74	228	123
75+	249	281
<b>ALL</b>	<b>744</b>	<b>522</b>

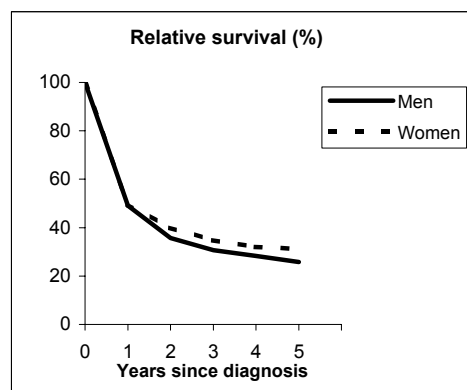


**Observed and Relative survival (%)**  
(in parenthesis 95% confidence limits of 5 years survival)

	Men		Women		ALL	
	obs	rel	obs	rel	obs	rel
1 year	46	48	46	48	46	48
3 years	26	30	27	31	26	31
<b>5 years</b>	<b>20</b>	<b>26</b>	<b>21</b>	<b>28</b>	<b>20</b>	<b>26</b>
95% CI	(17-23)	(22-30)	(18-25)	(23-32)	(18-23)	(24-29)

## VENETO - Incident cases 1990-'94

AGE CLASSES	Men	Women
15-44	50	30
45-54	141	63
55-64	286	122
65-74	409	250
75+	462	522
<b>ALL</b>	<b>1,348</b>	<b>987</b>



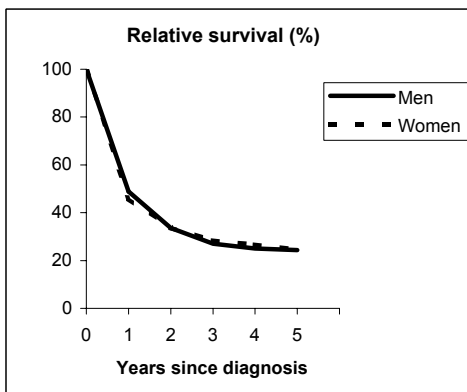
**Observed and Relative survival (%)**  
(in parenthesis 95% confidence limits of 5 years survival)

	Men		Women		ALL	
	obs	rel	obs	rel	obs	rel
1 year	47	49	47	50	47	49
3 years	26	31	30	35	28	32
<b>5 years</b>	<b>20</b>	<b>26</b>	<b>24</b>	<b>31</b>	<b>22</b>	<b>28</b>
95% CI	(18-22)	(23-29)	(22-27)	(28-35)	(20-24)	(26-30)

# STOMACH (ICD-IX 151)

## PARMA - Incident cases 1990-'94

AGE CLASSES	Men	Women
15-44	18	8
45-54	39	17
55-64	118	51
65-74	202	94
75+	264	260
<b>ALL</b>	<b>641</b>	<b>430</b>

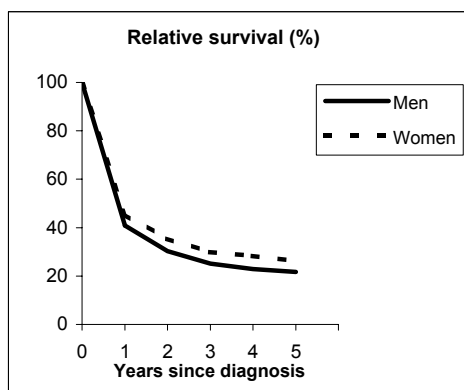


**Observed and Relative survival (%)**  
(in parenthesis 95% confidence limits of 5 years survival)

	Men		Women		ALL	
	<i>obs</i>	<i>rel</i>	<i>obs</i>	<i>rel</i>	<i>obs</i>	<i>rel</i>
1 year	46	49	44	46	45	48
3 years	23	27	24	28	24	28
<b>5 years</b>	<b>18</b>	<b>24</b>	<b>19</b>	<b>25</b>	<b>18</b>	<b>24</b>
95% CI	(16-22)	(21-29)	(15-23)	(20-30)	(16-21)	(22-28)

## MODENA - Incident cases 1990-'94

AGE CLASSES	Men	Women
15-44	14	16
45-54	41	22
55-64	93	51
65-74	217	105
75+	252	236
<b>ALL</b>	<b>617</b>	<b>430</b>



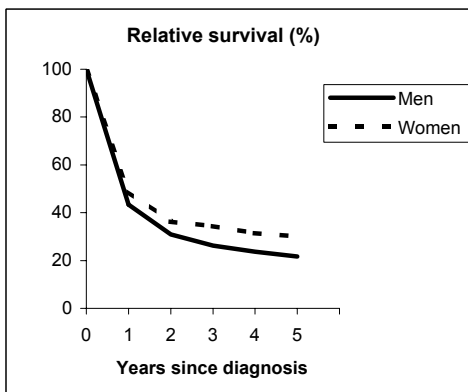
**Observed and Relative survival (%)**  
(in parenthesis 95% confidence limits of 5 years survival)

	Men		Women		ALL	
	<i>obs</i>	<i>rel</i>	<i>obs</i>	<i>rel</i>	<i>obs</i>	<i>rel</i>
1 year	39	41	44	46	41	43
3 years	21	25	26	30	23	27
<b>5 years</b>	<b>16</b>	<b>22</b>	<b>20</b>	<b>26</b>	<b>18</b>	<b>24</b>
95% CI	(14-20)	(18-26)	(17-25)	(22-32)	(16-21)	(21-27)

# STOMACH (ICD-IX 151)

## FERRARA - Incident cases 1990-'94

AGE CLASSES	Men	Women
15-44	10	6
45-54	24	13
55-64	72	36
65-74	139	70
75+	127	133
<b>ALL</b>	<b>372</b>	<b>258</b>

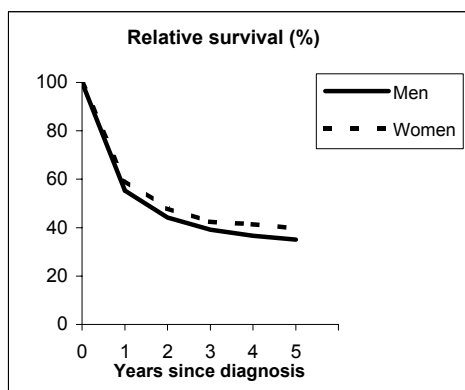


**Observed and Relative survival (%)**  
(in parenthesis 95% confidence limits of 5 years survival)

	Men		Women		ALL	
	obs	rel	obs	rel	obs	rel
1 year	41	43	47	49	44	46
3 years	22	26	30	34	26	30
<b>5 years</b>	<b>17</b>	<b>22</b>	<b>24</b>	<b>30</b>	<b>20</b>	<b>25</b>
95% CI	(13-21)	(17-27)	(19-29)	(24-37)	(17-23)	(21-30)

## ROMAGNA - Incident cases 1990-'94

AGE CLASSES	Men	Women
15-44	13	18
45-54	57	34
55-64	144	60
65-74	233	154
75+	315	319
<b>ALL</b>	<b>762</b>	<b>585</b>



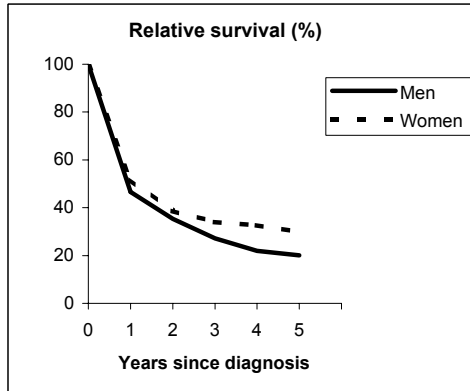
**Observed and Relative survival (%)**  
(in parenthesis 95% confidence limits of 5 years survival)

	Men		Women		ALL	
	obs	rel	obs	rel	obs	rel
1 year	53	55	58	60	55	57
3 years	35	39	38	42	36	41
<b>5 years</b>	<b>28</b>	<b>35</b>	<b>33</b>	<b>40</b>	<b>30</b>	<b>37</b>
95% CI	(25-31)	(31-39)	(29-37)	(35-44)	(28-33)	(34-40)

# STOMACH (ICD-IX 151)

## MACERATA - Incident cases 1991-'94

AGE CLASSES	Men	Women
15-44	9	8
45-54	30	14
55-64	51	35
65-74	107	56
75+	127	113
<b>ALL</b>	<b>324</b>	<b>226</b>

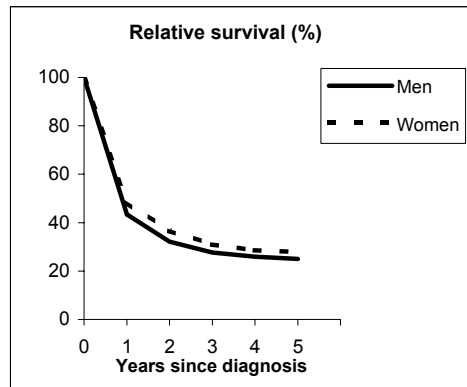


**Observed and Relative survival (%)**  
(in parenthesis 95% confidence limits of 5 years survival)

	Men		Women		ALL	
	obs	rel	obs	rel	obs	rel
1 year	44	47	50	52	47	49
3 years	23	27	30	34	26	30
<b>5 years</b>	<b>15</b>	<b>20</b>	<b>23</b>	<b>30</b>	<b>19</b>	<b>24</b>
95% CI	(12-20)	(15-26)	(18-29)	(23-37)	(16-22)	(20-29)

## FIRENZE-PRATO - Incident cases 1990-'94

AGE CLASSES	Men	Women
15-44	38	25
45-54	120	61
55-64	332	130
65-74	610	293
75+	716	724
<b>ALL</b>	<b>1,816</b>	<b>1,233</b>



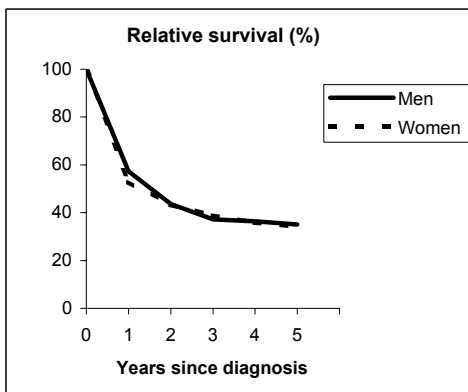
**Observed and Relative survival (%)**  
(in parenthesis 95% confidence limits of 5 years survival)

	Men		Women		ALL	
	obs	rel	obs	rel	obs	rel
1 year	41	43	46	48	43	45
3 years	24	28	26	31	25	29
<b>5 years</b>	<b>19</b>	<b>25</b>	<b>21</b>	<b>28</b>	<b>20</b>	<b>26</b>
95% CI	(17-21)	(23-27)	(19-23)	(25-31)	(18-21)	(24-28)

# STOMACH (ICD-IX 151)

## UMBRIA - Incident cases 1994-'96

AGE CLASSES	Men	Women
15-44	20	9
45-54	59	28
55-64	133	62
65-74	259	140
75+	236	218
<b>ALL</b>	<b>707</b>	<b>457</b>

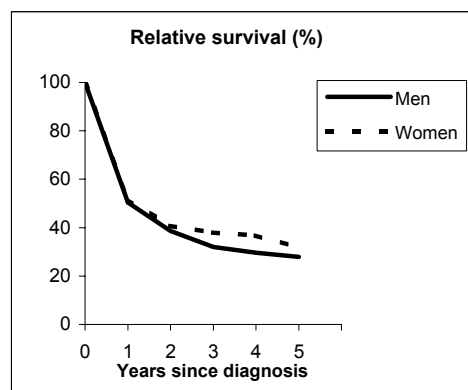


**Observed and Relative survival (%)**  
(in parenthesis 95% confidence limits of 5 years survival)

	Men		Women		ALL	
	<i>obs</i>	<i>rel</i>	<i>obs</i>	<i>rel</i>	<i>obs</i>	<i>rel</i>
1 year	55	57	51	53	53	56
3 years	32	37	34	39	33	38
<b>5 years</b>	<b>27</b>	<b>35</b>	<b>27</b>	<b>34</b>	<b>27</b>	<b>35</b>
95% CI	(24-31)	(31-40)	(23-31)	(29-40)	(24-30)	(31-38)

## LATINA - Incident cases 1990-'94

AGE CLASSES	Men	Women
15-44	13	10
45-54	30	8
55-64	56	36
65-74	76	35
75+	45	46
<b>ALL</b>	<b>220</b>	<b>135</b>



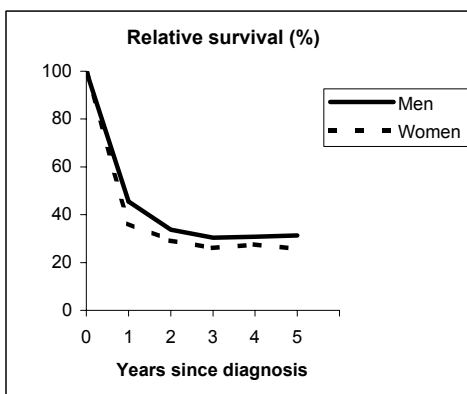
**Observed and Relative survival (%)**  
(in parenthesis 95% confidence limits of 5 years survival)

	Men		Women		ALL	
	<i>obs</i>	<i>rel</i>	<i>obs</i>	<i>rel</i>	<i>obs</i>	<i>rel</i>
1 year	49	50	50	52	49	51
3 years	29	32	35	38	31	34
<b>5 years</b>	<b>23</b>	<b>28</b>	<b>27</b>	<b>32</b>	<b>25</b>	<b>29</b>
95% CI	(18-29)	(22-35)	(20-35)	(24-41)	(20-29)	(24-35)

# STOMACH (ICD-IX 151)

## SASSARI - Incident cases 1992-'94

AGE CLASSES	Men	Women
15-44	3	3
45-54	14	4
55-64	31	10
65-74	33	20
75+	38	38
<b>ALL</b>	<b>119</b>	<b>75</b>

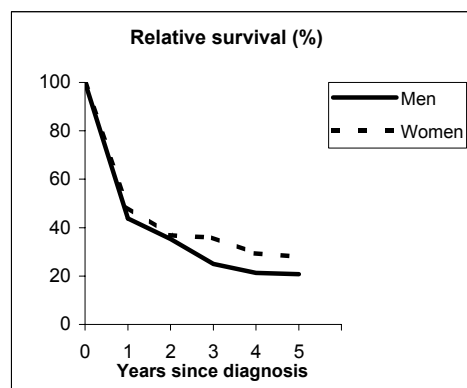


**Observed and Relative survival (%)**  
(in parenthesis 95% confidence limits of 5 years survival)

	Men		Women		ALL	
	obs	rel	obs	rel	obs	rel
1 year	44	46	35	36	40	42
3 years	27	30	23	26	25	29
<b>5 years</b>	<b>25</b>	<b>31</b>	<b>20</b>	<b>26</b>	<b>23</b>	<b>29</b>
95% CI	(18-33)	(23-42)	(13-30)	(16-39)	(18-29)	(22-37)

## RAGUSA - Incident cases 1990-'94

AGE CLASSES	Men	Women
15-44	4	2
45-54	14	9
55-64	34	19
65-74	37	24
75+	55	34
<b>ALL</b>	<b>144</b>	<b>88</b>



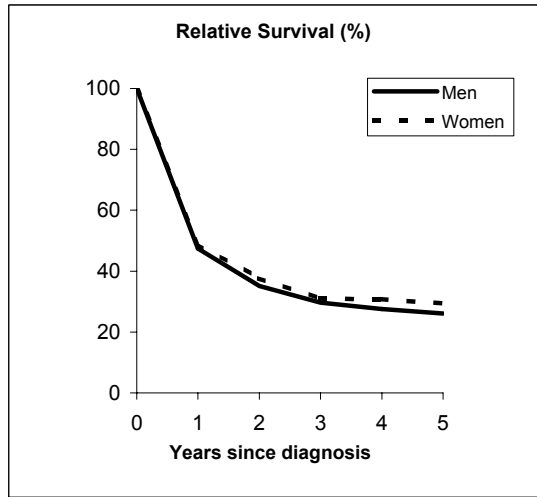
**Observed and Relative survival (%)**  
(in parenthesis 95% confidence limits of 5 years survival)

	Men		Women		ALL	
	obs	rel	obs	rel	obs	rel
1 year	42	44	47	48	44	46
3 years	22	25	32	36	25	29
<b>5 years</b>	<b>16</b>	<b>21</b>	<b>23</b>	<b>28</b>	<b>19</b>	<b>24</b>
95% CI	(11-23)	(14-30)	(15-33)	(19-40)	(14-24)	(18-31)

# STOMACH (ICD-IX 151)

## Pool of Italian Registries

REGISTRY	Number of cases		
	Men	Women	Total
Torino	603	438	1,041
Genova	542	375	917
Varese	744	522	1,266
Veneto	1,348	987	2,335
Parma	641	430	1,071
Modena	617	430	1,047
Ferrara	372	258	630
Romagna	762	585	1,347
Macerata	324	226	550
Firenze-Prato	1,816	1,233	3,049
Umbria	707	457	355
Latina	220	135	355
Sassari	119	75	194
Ragusa	144	88	232
<b>Italy</b>	<b>8,959</b>	<b>6,239</b>	<b>15,198</b>



### Observed and relative survival (%) by sex and age classes

	16-44		45-54		55-64		65-74		75+		ALL	
	obs	rel	obs	rel	obs	rel	obs	rel	obs	rel	obs	rel
<b>Men</b>												
1 year	69	69	63	63	55	56	46	48	33	37	45	47
3 years	52	53	42	42	34	35	27	30	14	20	26	30
<b>5 years</b>	<b>45</b>	<b>45</b>	<b>35</b>	<b>36</b>	<b>28</b>	<b>30</b>	<b>21</b>	<b>25</b>	<b>10</b>	<b>18</b>	<b>20</b>	<b>26</b>
95% CI	(39-51)	(39-51)	(32-39)	(33-40)	(26-30)	(28-33)	(19-22)	(23-27)	(9-11)	(16-19)	(19-21)	(25-27)
<b>Women</b>												
1 year	66	66	70	71	59	59	54	54	37	40	47	49
3 years	47	47	51	51	42	42	35	37	19	25	29	33
<b>5 years</b>	<b>40</b>	<b>41</b>	<b>43</b>	<b>44</b>	<b>36</b>	<b>37</b>	<b>28</b>	<b>31</b>	<b>14</b>	<b>22</b>	<b>23</b>	<b>29</b>
95% CI	(33-48)	(33-48)	(38-48)	(39-49)	(33-40)	(34-41)	(26-31)	(29-34)	(13-15)	(20-24)	(22-24)	(28-31)
<b>Total</b>												
1 year	68	68	65	65	56	57	49	50	35	38	46	48
3 years	50	50	45	45	36	38	30	32	17	22	27	31
<b>5 years</b>	<b>43</b>	<b>43</b>	<b>38</b>	<b>39</b>	<b>55</b>	<b>56</b>	<b>23</b>	<b>27</b>	<b>12</b>	<b>20</b>	<b>21</b>	<b>27</b>
95% CI	(38-48)	(39-48)	(0-0)	(36-42)	(29-32)	(31-35)	(22-25)	(26-29)	(11-13)	(19-21)	(21-22)	(27-28)

### Five Years Age-adjusted Relative Survival of 1986-89 and 1990-94 incident cases

