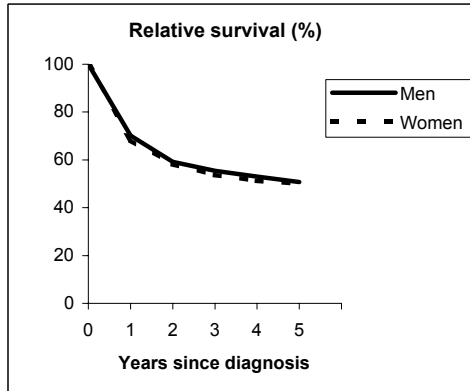


COLON (ICD-IX 153)

TORINO - Incident cases 1990-'94

AGE CLASSES	Men	Women
15-44	20	22
45-54	75	87
55-64	221	181
65-74	294	259
75+	260	355
ALL	870	904

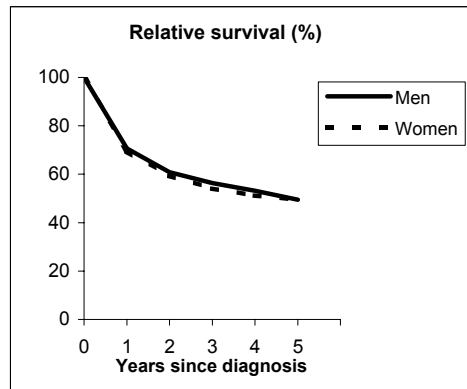


Observed and Relative survival (%)
(in parenthesis 95% confidence limits of 5 years survival)

	Men		Women		ALL	
	obs	rel	obs	rel	obs	rel
1 year	67	70	66	68	67	69
3 years	48	55	49	54	49	55
5 years	40	51	42	50	41	50
95% CI	(37-44)	(47-55)	(39-46)	(46-54)	(39-44)	(48-53)

GENOVA - Incident cases 1990-'94

AGE CLASSES	Men	Women
15-44	28	23
45-54	68	71
55-64	218	151
65-74	287	251
75+	293	400
ALL	894	896



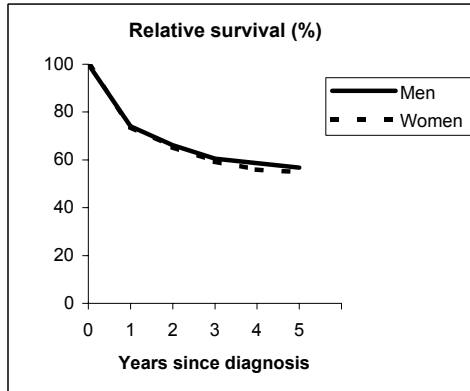
Observed and Relative survival (%)
(in parenthesis 95% confidence limits of 5 years survival)

	Men		Women		ALL	
	obs	rel	obs	rel	obs	rel
1 year	68	71	67	70	67	70
3 years	49	56	48	54	48	55
5 years	39	50	40	50	39	50
95% CI	(35-42)	(45-54)	(37-43)	(46-54)	(37-42)	(47-52)

COLON (ICD-IX 153)

VARESE - Incident cases 1990-'94

AGE CLASSES	Men	Women
15-44	25	26
45-54	87	69
55-64	173	149
65-74	239	189
75+	228	315
ALL	752	748

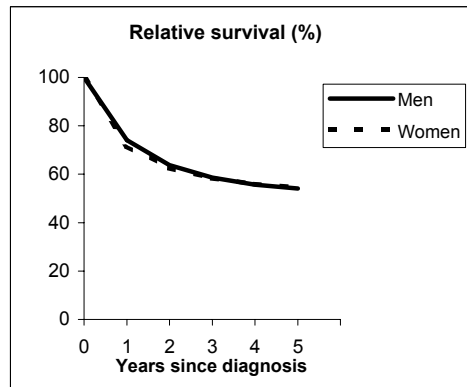


Observed and Relative survival (%)
(in parenthesis 95% confidence limits of 5 years survival)

	Men		Women		ALL	
	obs	rel	obs	rel	obs	rel
1 year	71	74	71	74	71	74
3 years	53	61	53	59	53	60
5 years	44	57	45	55	45	56
95% CI	(41-48)	(52-61)	(41-49)	(51-59)	(42-47)	(53-59)

VENETO- Incident cases 1990-'94

AGE CLASSES	Men	Women
15-44	66	58
45-54	165	177
55-64	431	321
65-74	716	545
75+	560	753
ALL	1,938	1,854



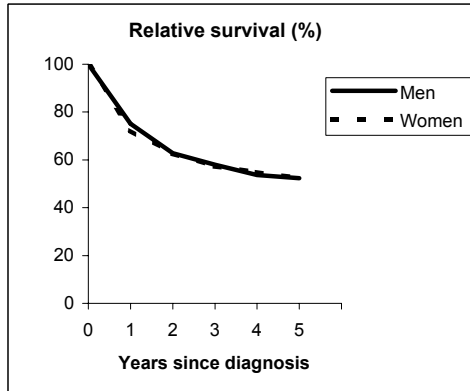
Observed and Relative survival (%)
(in parenthesis 95% confidence limits of 5 years survival)

	Men		Women		ALL	
	obs	rel	obs	rel	obs	rel
1 year	71	74	69	72	70	73
3 years	51	59	52	58	52	58
5 years	43	54	45	55	44	54
95% CI	(41-45)	(51-57)	(43-47)	(52-57)	(42-46)	(52-56)

COLON (ICD-IX 153)

PARMA - Incident cases 1990-'94

AGE CLASSES	Men	Women
15-44	15	14
45-54	35	35
55-64	106	76
65-74	162	122
75+	188	194
ALL	506	441

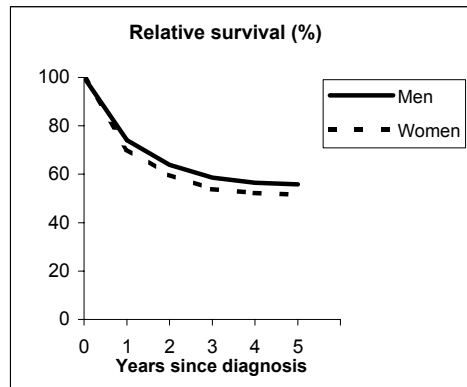


Observed and Relative survival (%)
(in parenthesis 95% confidence limits of 5 years survival)

	Men		Women		ALL	
	<i>obs</i>	<i>rel</i>	<i>obs</i>	<i>rel</i>	<i>obs</i>	<i>rel</i>
1 year	72	75	70	72	71	74
3 years	50	58	51	57	51	58
5 years	40	52	43	52	42	52
95% CI	(36-45)	(47-58)	(39-48)	(47-58)	(39-45)	(48-56)

MODENA - Incident cases 1990-'94

AGE CLASSES	Men	Women
15-44	21	19
45-54	55	56
55-64	154	125
65-74	210	218
75+	203	245
ALL	643	663



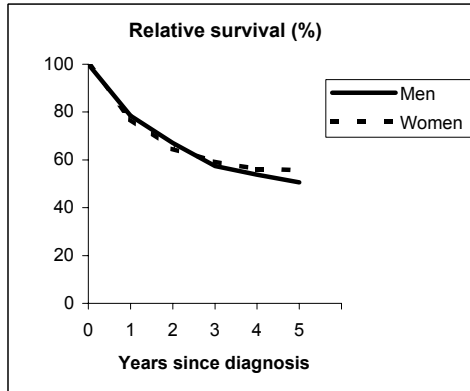
Observed and Relative survival (%)
(in parenthesis 95% confidence limits of 5 years survival)

	Men		Women		ALL	
	<i>obs</i>	<i>rel</i>	<i>obs</i>	<i>rel</i>	<i>obs</i>	<i>rel</i>
1 year	71	74	68	70	70	72
3 years	51	59	49	54	50	56
5 years	44	56	43	52	44	54
95% CI	(41-48)	(51-61)	(40-47)	(47-56)	(41-47)	(50-57)

COLON (ICD-IX 153)

FERRARA - Incident cases 1990-'94

AGE CLASSES	Men	Women
15-44	17	13
45-54	39	42
55-64	123	92
65-74	172	175
75+	146	180
ALL	497	502

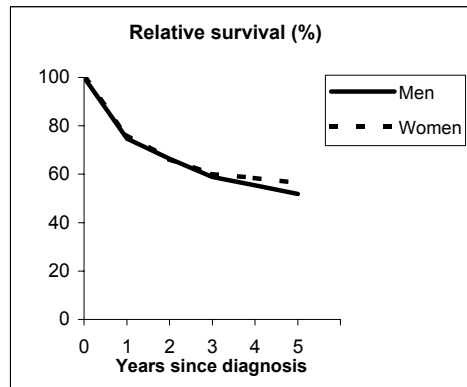


Observed and Relative survival (%)
(in parenthesis 95% confidence limits of 5 years survival)

	Men		Women		ALL	
	<i>obs</i>	<i>rel</i>	<i>obs</i>	<i>rel</i>	<i>obs</i>	<i>rel</i>
1 year	75	78	75	77	75	78
3 years	50	57	54	59	52	58
5 years	39	51	47	56	43	53
95% CI	(35-44)	(45-56)	(42-51)	(51-61)	(40-46)	(49-57)

ROMAGNA- Incident cases 1990-'94

AGE CLASSES	Men	Women
15-44	19	18
45-54	49	53
55-64	106	91
65-74	184	149
75+	160	256
ALL	518	567



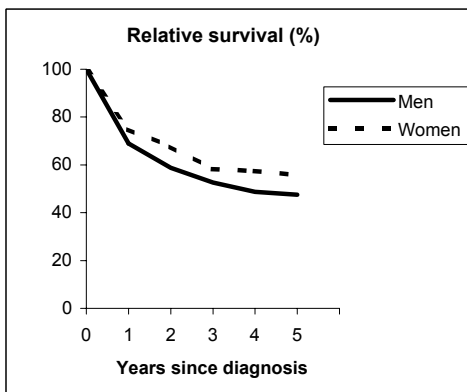
Observed and Relative survival (%)
(in parenthesis 95% confidence limits of 5 years survival)

	Men		Women		ALL	
	<i>obs</i>	<i>rel</i>	<i>obs</i>	<i>rel</i>	<i>obs</i>	<i>rel</i>
1 year	72	75	74	76	73	76
3 years	53	59	55	60	54	59
5 years	43	52	48	56	46	54
95% CI	(39-48)	(47-57)	(44-52)	(52-61)	(43-49)	(51-58)

COLON (ICD-IX 153)

MACERATA - Incident cases 1991-'94

AGE CLASSES	Men	Women
15-44	6	9
45-54	31	23
55-64	58	43
65-74	83	73
75+	114	128
ALL	292	276

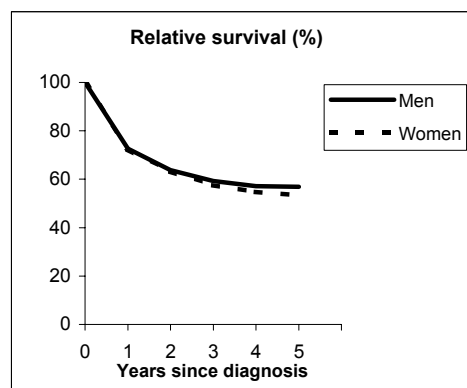


Observed and Relative survival (%)
(in parenthesis 95% confidence limits of 5 years survival)

	Men		Women		ALL	
	<i>obs</i>	<i>rel</i>	<i>obs</i>	<i>rel</i>	<i>obs</i>	<i>rel</i>
1 year	66	69	72	75	69	72
3 years	46	53	52	58	49	55
5 years	37	48	45	56	41	52
95% CI	(32-43)	(41-55)	(40-51)	(49-63)	(37-45)	(47-57)

FIRENZE-PRATO - Incident cases 1990-'94

AGE CLASSES	Men	Women
15-44	31	43
45-54	111	114
55-64	298	237
65-74	489	385
75+	493	669
ALL	1,422	1,448



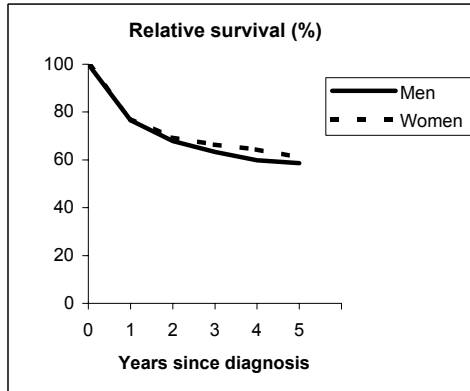
Observed and Relative survival (%)
(in parenthesis 95% confidence limits of 5 years survival)

	Men		Women		ALL	
	<i>obs</i>	<i>rel</i>	<i>obs</i>	<i>rel</i>	<i>obs</i>	<i>rel</i>
1 year	69	73	70	72	70	72
3 years	51	59	51	58	51	58
5 years	44	57	43	53	44	55
95% CI	(42-47)	(54-60)	(41-46)	(50-56)	(42-46)	(53-57)

COLON (ICD-IX 153)

UMBRIA - Incident cases 1994-'96

AGE CLASSES	Men	Women
15-44	16	21
45-54	36	34
55-64	120	76
65-74	242	192
75+	203	229
ALL	617	552

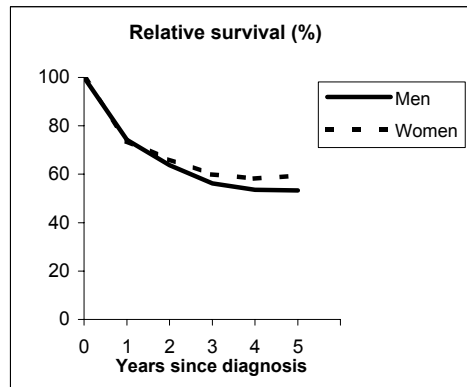


Observed and Relative survival (%)
(in parenthesis 95% confidence limits of 5 years survival)

	Men		Women		ALL	
	obs	rel	obs	rel	obs	rel
1 year	73	77	74	77	74	77
3 years	55	63	59	66	57	65
5 years	46	59	49	61	47	60
95% CI	(42-50)	(53-64)	(45-54)	(55-67)	(44-51)	(56-64)

LATINA - Incident cases 1990-'94

AGE CLASSES	Men	Women
15-44	11	9
45-54	26	32
55-64	52	39
65-74	71	52
75+	51	56
ALL	211	188



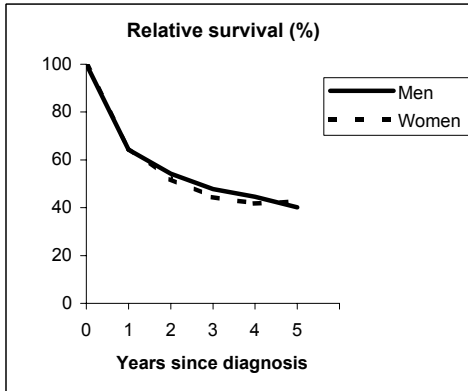
Observed and Relative survival (%)
(in parenthesis 95% confidence limits of 5 years survival)

	Men		Women		ALL	
	obs	rel	obs	rel	obs	rel
1 year	72	74	72	74	72	74
3 years	50	56	55	60	53	58
5 years	44	53	52	59	48	56
95% CI	(37-51)	(45-62)	(44-59)	(51-67)	(43-52)	(51-62)

COLON (ICD-IX 153)

SASSARI - Incident cases 1992-'94

AGE CLASSES	Men	Women
15-44	12	3
45-54	8	19
55-64	32	23
65-74	51	36
75+	48	49
ALL	151	130

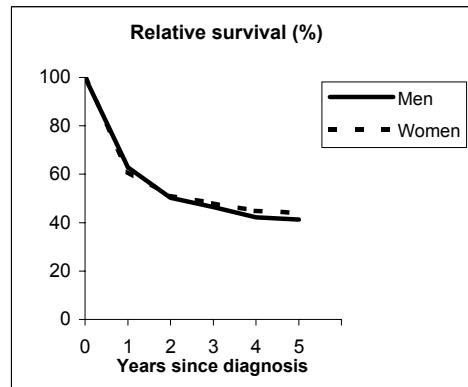


Observed and Relative survival (%)
(in parenthesis 95% confidence limits of 5 years survival)

	Men		Women		ALL	
	<i>obs</i>	<i>rel</i>	<i>obs</i>	<i>rel</i>	<i>obs</i>	<i>rel</i>
1 year	62	64	63	65	62	65
3 years	42	48	40	44	41	46
5 years	32	40	35	43	33	41
95% CI	(25-40)	(31-50)	(28-44)	(33-53)	(28-39)	(35-48)

RAGUSA - Incident cases 1990-'94

AGE CLASSES	Men	Women
15-44	5	9
45-54	14	13
55-64	33	32
65-74	60	52
75+	51	67
ALL	163	173



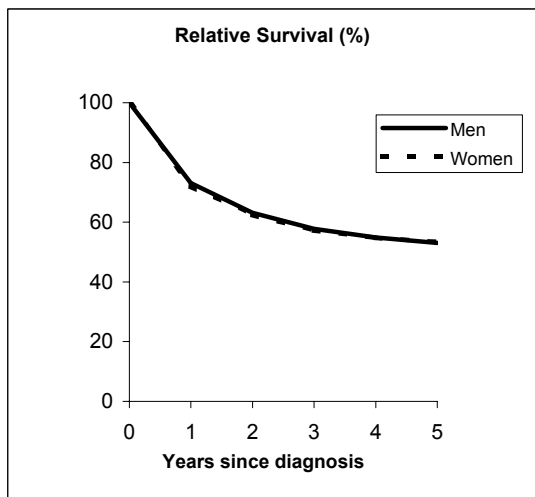
Observed and Relative survival (%)
(in parenthesis 95% confidence limits of 5 years survival)

	Men		Women		ALL	
	<i>obs</i>	<i>rel</i>	<i>obs</i>	<i>rel</i>	<i>obs</i>	<i>rel</i>
1 year	60	63	59	61	60	62
3 years	40	46	43	48	42	47
5 years	33	41	36	44	34	43
95% CI	(26-40)	(33-51)	(29-43)	(36-53)	(29-39)	(37-49)

COLON (ICD-IX 153)

Pool of Italian Registries

REGISTRY	Number of cases		
	Men	Women	Total
Torino	870	904	1,774
Genova	894	896	1,790
Varese	752	748	1,500
Veneto	1,938	1,854	3,792
Parma	506	441	947
Modena	643	663	1,306
Ferrara	497	502	999
Romagna	518	567	1,085
Macerata	292	276	568
Firenze-Prato	1,422	1,448	2,870
Umbria	617	552	1,169
Latina	211	188	399
Sassari	151	130	281
Ragusa	163	173	336
Italy	9,474	9,342	18,816



Observed and relative survival (%) by sex and age classes

	15-44		45-54		55-64		65-74		75+		ALL	
	obs	rel	obs	rel	obs	rel	obs	rel	obs	rel	obs	rel
Men												
1 year	83	83	79	79	78	79	72	75	58	64	70	73
3 years	61	62	60	61	60	62	54	59	37	50	51	58
5 years	57	57	54	56	53	57	45	54	27	46	42	53
95% CI	(51-62)	(51-63)	(51-58)	(52-59)	(50-55)	(54-59)	(43-47)	(51-56)	(25-29)	(44-49)	(41-43)	(52-54)
Women												
1 year	84	84	81	81	80	81	76	77	58	62	70	72
3 years	67	67	62	62	66	67	57	59	38	48	51	57
5 years	59	59	55	56	60	62	50	55	30	45	44	53
95% CI	(53-64)	(53-65)	(52-59)	(53-60)	(57-62)	(59-64)	(48-52)	(53-57)	(29-32)	(43-48)	(43-45)	(52-55)
Total												
1 year	84	84	80	80	79	80	74	76	58	63	70	73
3 years	64	65	61	62	62	64	55	59	38	49	51	57
5 years	58	58	55	56	56	59	47	54	29	46	43	53
95% CI	(54-62)	(54-62)	(52-57)	(53-58)	(54-57)	(57-61)	(46-48)	(53-56)	(28-30)	(44-47)	(42-44)	(52-54)

Five Years Age-adjusted Relative Survival of 1986-89 and 1990-94 incident cases

