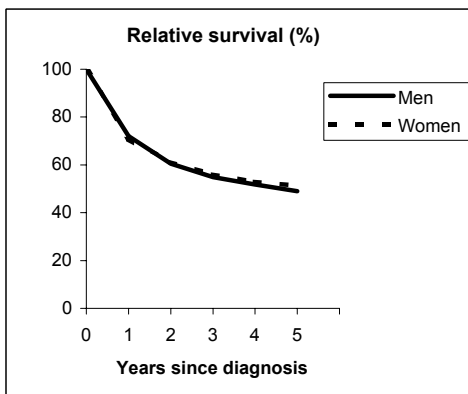


COLON-RECTUM (ICD-IX 153-4)

TORINO - Incident cases 1990-'94

AGE CLASSES	Men	Women
15-44	46	34
45-54	121	129
55-64	351	290
65-74	448	385
75+	404	523
ALL	1,370	1,361

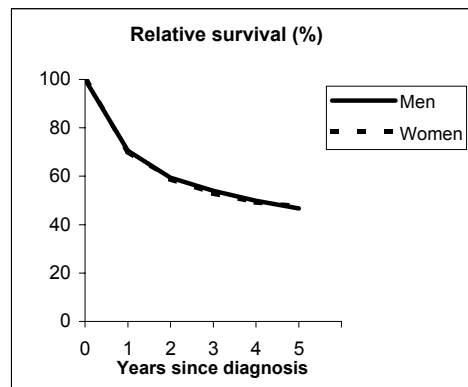


Observed and Relative survival (%)
(in parenthesis 95% confidence limits of 5 years survival)

	Men		Women		ALL	
	obs	rel	obs	rel	obs	rel
1 year	69	72	69	71	69	71
3 years	48	55	51	56	49	55
5 years	39	49	43	51	41	50
95% CI	(37-42)	(46-52)	(41-46)	(48-54)	(39-43)	(48-52)

GENOVA - Incident cases 1990-'94

AGE CLASSES	Men	Women
15-44	40	31
45-54	104	109
55-64	322	216
65-74	436	352
75+	434	569
ALL	1,336	1,277



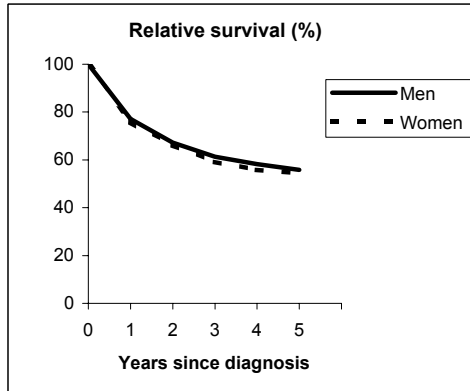
Observed and Relative survival (%)
(in parenthesis 95% confidence limits of 5 years survival)

	Men		Women		ALL	
	obs	rel	obs	rel	obs	rel
1 year	67	71	68	70	68	70
3 years	47	54	47	53	47	53
5 years	36	47	38	48	37	47
95% CI	(34-39)	(43-50)	(36-41)	(44-51)	(36-39)	(45-50)

COLON-RECTUM (ICD-IX 153-4)

VARESE - Incident cases 1990-'94

AGE CLASSES	Men	Women
15-44	43	47
45-54	125	103
55-64	294	222
65-74	386	274
75+	343	466
ALL	1,191	1,112

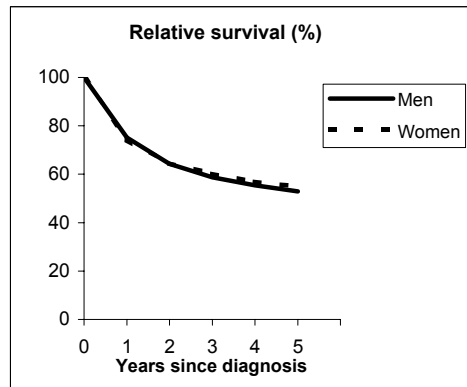


Observed and Relative survival (%)
(in parenthesis 95% confidence limits of 5 years survival)

	Men		Women		ALL	
	<i>obs</i>	<i>rel</i>	<i>obs</i>	<i>rel</i>	<i>obs</i>	<i>rel</i>
1 year	74	77	73	76	74	77
3 years	54	61	53	59	53	60
5 years	44	56	45	54	44	55
95% CI	(41-47)	(52-59)	(42-47)	(51-58)	(42-46)	(53-58)

VENETO - Incident cases 1990-'94

AGE CLASSES	Men	Women
15-44	101	79
45-54	257	261
55-64	689	467
65-74	1,022	768
75+	811	1,073
ALL	2,880	2,648



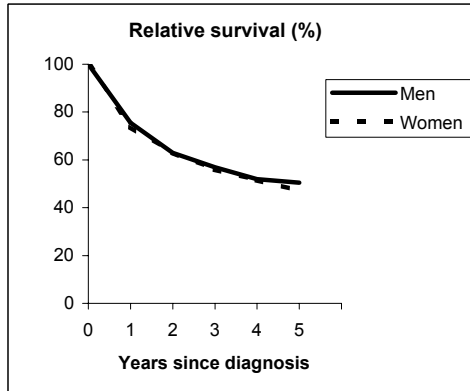
Observed and Relative survival (%)
(in parenthesis 95% confidence limits of 5 years survival)

	Men		Women		ALL	
	<i>obs</i>	<i>rel</i>	<i>obs</i>	<i>rel</i>	<i>obs</i>	<i>rel</i>
1 year	72	75	72	74	72	75
3 years	52	59	54	60	53	59
5 years	42	53	45	55	44	54
95% CI	(40-44)	(51-55)	(43-47)	(53-57)	(42-45)	(52-56)

COLON-RECTUM (ICD-IX 153-4)

PARMA - Incident cases 1990-'94

AGE CLASSES	Men	Women
15-44	16	20
45-54	64	52
55-64	157	123
65-74	255	186
75+	277	283
ALL	769	664

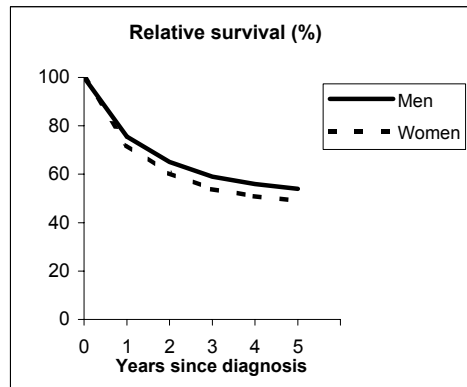


Observed and Relative survival (%)
(in parenthesis 95% confidence limits of 5 years survival)

	Men		Women		ALL	
	obs	rel	obs	rel	obs	rel
1 year	72	75	72	74	72	75
3 years	49	57	50	56	50	56
5 years	39	50	39	47	39	49
95% CI	(36-43)	(46-55)	(36-43)	(43-52)	(37-42)	(46-52)

MODENA - Incident cases 1990-'94

AGE CLASSES	Men	Women
15-44	27	25
45-54	85	86
55-64	235	183
65-74	355	291
75+	310	357
ALL	1,012	942



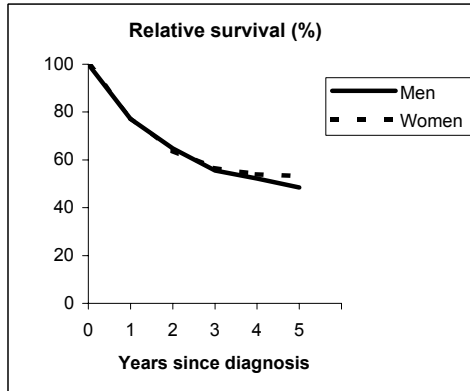
Observed and Relative survival (%)
(in parenthesis 95% confidence limits of 5 years survival)

	Men		Women		ALL	
	obs	rel	obs	rel	obs	rel
1 year	72	75	70	72	71	74
3 years	52	59	49	54	50	56
5 years	43	54	41	49	42	52
95% CI	(40-46)	(50-58)	(38-44)	(45-53)	(40-44)	(49-54)

COLON-RECTUM (ICD-IX 153-4)

FERRARA - Incident cases 1990-'94

AGE CLASSES	Men	Women
15-44	24	18
45-54	53	56
55-64	169	127
65-74	242	223
75+	213	240
ALL	701	664

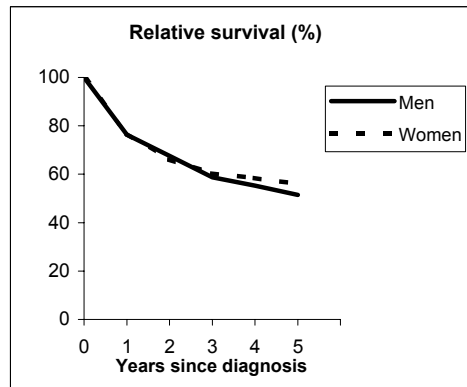


Observed and Relative survival (%)
(in parenthesis 95% confidence limits of 5 years survival)

	Men		Women		ALL	
	<i>obs</i>	<i>rel</i>	<i>obs</i>	<i>rel</i>	<i>obs</i>	<i>rel</i>
1 year	74	77	76	78	75	78
3 years	49	56	52	57	50	56
5 years	38	48	45	53	42	51
95% CI	(35-42)	(44-53)	(41-49)	(49-58)	(39-44)	(48-54)

ROMAGNA - Incident cases 1990-'94

AGE CLASSES	Men	Women
15-44	23	28
45-54	70	70
55-64	168	133
65-74	254	212
75+	238	358
ALL	753	801



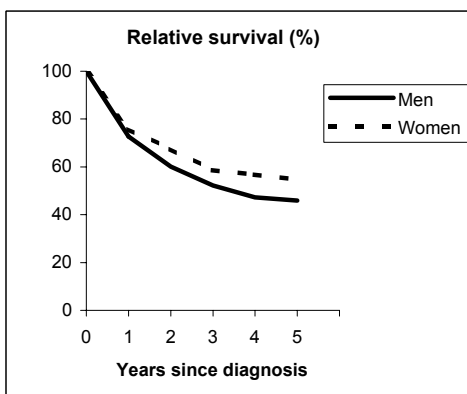
Observed and Relative survival (%)
(in parenthesis 95% confidence limits of 5 years survival)

	Men		Women		ALL	
	<i>obs</i>	<i>rel</i>	<i>obs</i>	<i>rel</i>	<i>obs</i>	<i>rel</i>
1 year	74	76	75	77	74	77
3 years	53	59	55	60	54	60
5 years	43	51	48	56	45	54
95% CI	(39-46)	(47-56)	(44-51)	(52-60)	(43-48)	(51-57)

COLON-RECTUM (ICD-IX 153-4)

MACERATA - Incident cases 1991-'94

AGE CLASSES	Men	Women
15-44	12	12
45-54	46	31
55-64	87	66
65-74	147	102
75+	166	183
ALL	458	394

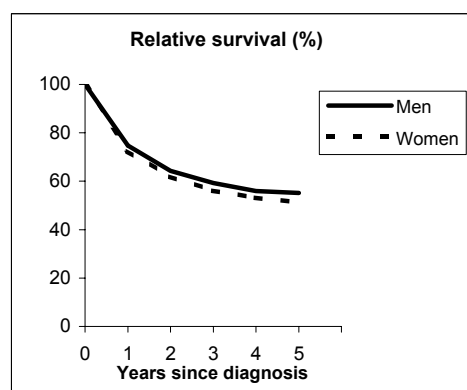


Observed and Relative survival (%)
(in parenthesis 95% confidence limits of 5 years survival)

	Men		Women		ALL	
	<i>obs</i>	<i>rel</i>	<i>obs</i>	<i>rel</i>	<i>obs</i>	<i>rel</i>
1 year	70	73	73	76	71	74
3 years	46	52	52	59	49	55
5 years	36	46	45	55	40	50
95% CI	(32-41)	(41-52)	(40-50)	(49-61)	(37-43)	(46-54)

FIRENZE-PRATO - Incident cases 1990-'94

AGE CLASSES	Men	Women
15-44	56	69
45-54	190	175
55-64	496	346
65-74	804	575
75+	733	986
ALL	2,279	2,151



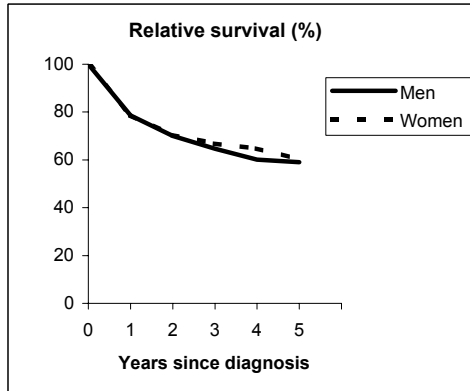
Observed and Relative survival (%)
(in parenthesis 95% confidence limits of 5 years survival)

	Men		Women		ALL	
	<i>obs</i>	<i>rel</i>	<i>obs</i>	<i>rel</i>	<i>obs</i>	<i>rel</i>
1 year	72	75	70	73	71	74
3 years	52	59	50	56	51	58
5 years	43	55	42	51	43	53
95% CI	(41-46)	(53-58)	(39-44)	(49-54)	(41-44)	(51-55)

COLON-RECTUM (ICD-IX 153-4)

UMBRIA - Incident cases 1994-'96

AGE CLASSES	Men	Women
15-44	28	31
45-54	64	71
55-64	180	130
65-74	442	294
75+	325	338
ALL	1,039	864

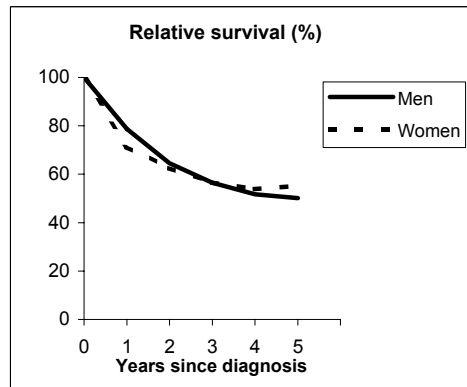


Observed and Relative survival (%)
(in parenthesis 95% confidence limits of 5 years survival)

	Men		Women		ALL	
	obs	rel	obs	rel	obs	rel
1 year	75	79	76	79	76	79
3 years	56	65	60	67	58	66
5 years	47	59	49	60	48	60
95% CI	(43-50)	(55-63)	(46-53)	(56-65)	(45-50)	(57-63)

LATINA - Incident cases 1990-'94

AGE CLASSES	Men	Women
15-44	16	15
45-54	47	45
55-64	89	59
65-74	115	70
75+	90	86
ALL	357	275



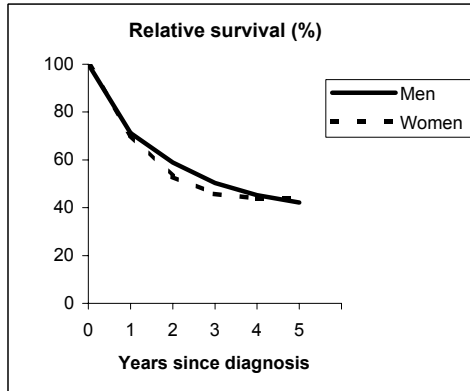
Observed and Relative survival (%)
(in parenthesis 95% confidence limits of 5 years survival)

	Men		Women		ALL	
	obs	rel	obs	rel	obs	rel
1 year	76	79	69	71	73	75
3 years	50	56	52	57	51	57
5 years	41	50	48	55	44	53
95% CI	(36-46)	(44-57)	(42-54)	(48-62)	(40-48)	(48-57)

COLON-RECTUM (ICD-IX 153-4)

SASSARI - Incident cases 1992-'94

AGE CLASSES	Men	Women
15-44	16	8
45-54	23	30
55-64	51	35
65-74	105	52
75+	86	68
ALL	281	193

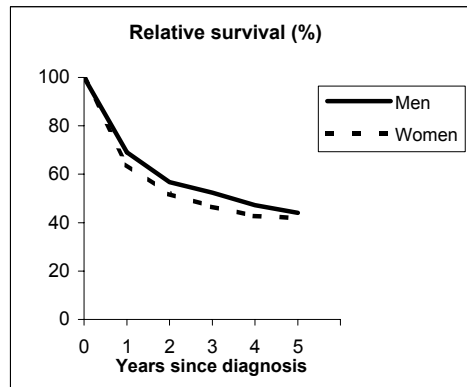


Observed and Relative survival (%)
(in parenthesis 95% confidence limits of 5 years survival)

	Men		Women		ALL	
	obs	rel	obs	rel	obs	rel
1 year	68	71	68	71	68	71
3 years	44	50	41	46	43	48
5 years	33	42	37	44	35	43
95% CI	(28-39)	(36-49)	(30-44)	(36-52)	(31-39)	(38-48)

RAGUSA - Incident cases 1990-'94

AGE CLASSES	Men	Women
15-44	11	13
45-54	23	19
55-64	51	48
65-74	99	75
75+	103	101
ALL	287	256



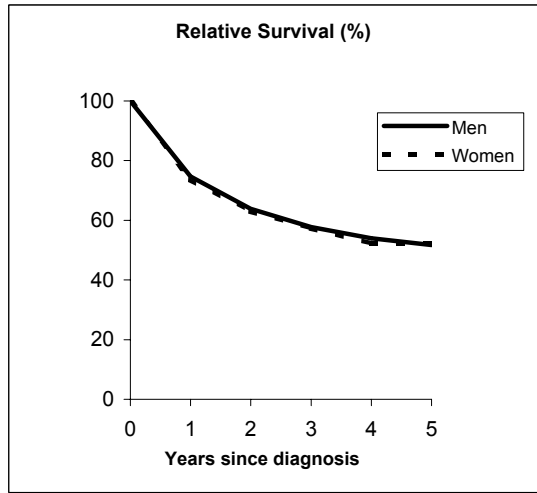
Observed and Relative survival (%)
(in parenthesis 95% confidence limits of 5 years survival)

	Men		Women		ALL	
	obs	rel	obs	rel	obs	rel
1 year	66	69	62	64	64	67
3 years	45	52	41	47	43	50
5 years	34	44	34	42	34	43
95% CI	(29-40)	(37-51)	(28-40)	(35-49)	(30-38)	(38-48)

COLON-RECTUM (ICD-IX 153-4)

Pool of Italian Registries

REGISTRY	Number of cases		
	Men	Women	Total
Torino	1,370	1,361	2,731
Genova	1,336	1,277	2,613
Varese	1,191	1,112	2,303
Veneto	2,880	2,648	5,528
Parma	769	664	1,433
Modena	1,012	942	1,954
Ferrara	701	664	1,365
Romagna	753	801	1,554
Macerata	458	394	852
Firenze-Prato	2,279	2,151	4,430
Umbria	1,039	864	1,903
Latina	357	275	632
Sassari	281	193	474
Ragusa	287	256	543
Italy	14,713	13,602	28,315



Observed and relative survival (%) by sex and age classes

	15-44		45-54		55-64		65-74		75+		ALL	
	obs	rel	obs	rel	obs	rel	obs	rel	obs	rel	obs	rel
Men												
1 year	84	84	81	81	80	81	74	76	59	64	72	75
3 years	63	64	62	63	61	63	54	60	35	47	51	58
5 years	56	56	53	55	52	57	44	53	25	42	41	52
95% CI	(51-60)	(51-61)	(50-56)	(52-57)	(51-54)	(55-58)	(43-45)	(51-54)	(24-26)	(40-45)	(40-42)	(51-53)
Women												
1 year	86	86	83	83	82	83	77	78	59	63	71	74
3 years	65	66	63	64	66	67	57	60	38	47	52	57
5 years	89	89	56	57	59	61	49	54	29	43	43	52
95% CI	(53-63)	(54-63)	(53-59)	(54-60)	(57-61)	(59-63)	(48-51)	(52-55)	(28-30)	(42-45)	(43-44)	(51-53)
Total												
1 year	85	85	82	82	81	82	75	77	59	64	71	74
3 years	64	65	63	63	63	65	56	60	36	47	51	58
5 years	57	57	55	56	55	58	46	53	27	43	42	52
95% CI	(53-60)	(54-60)	(53-57)	(54-58)	(54-56)	(0-0)	(45-47)	(52-54)	(26-28)	(42-44)	(42-43)	(51-53)

Five Years Age-adjusted Relative Survival

Men and Women

