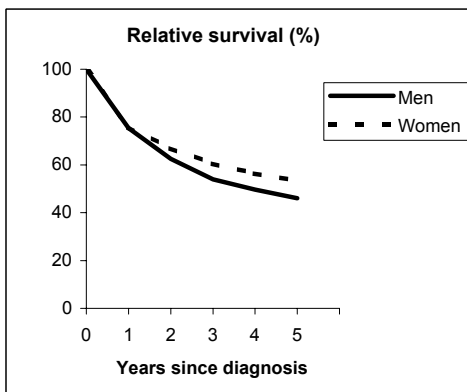


RECTUM (ICD-IX 154)

TORINO - Incident cases 1990-'94

AGE CLASSES	Men	Women
15-44	26	12
45-54	46	42
55-64	130	109
65-74	154	126
75+	144	168
ALL	500	457

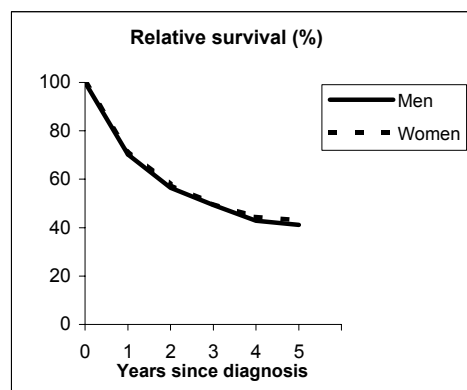


Observed and Relative survival (%)
(in parenthesis 95% confidence limits of 5 years survival)

	Men		Women		ALL	
	obs	rel	obs	rel	obs	rel
1 year	72	75	73	76	73	76
3 years	48	54	55	60	51	57
5 years	37	46	45	53	41	50
95% CI	(33-41)	(41-51)	(41-50)	(48-59)	(38-44)	(46-53)

GENOVA - Incident cases 1990-'94

AGE CLASSES	Men	Women
15-44	12	8
45-54	36	38
55-64	104	65
65-74	149	101
75+	141	169
ALL	442	381



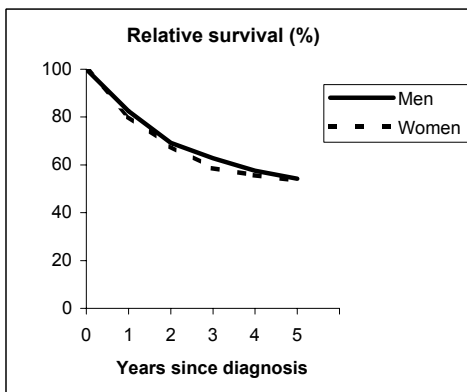
Observed and Relative survival (%)
(in parenthesis 95% confidence limits of 5 years survival)

	Men		Women		ALL	
	obs	rel	obs	rel	obs	rel
1 year	67	70	69	72	68	71
3 years	43	49	44	50	43	50
5 years	32	41	35	43	33	42
95% CI	(28-36)	(36-47)	(30-40)	(37-49)	(30-36)	(38-46)

RECTUM (ICD-IX 154)

VARESE - Incident cases 1990-'94

AGE CLASSES	Men	Women
15-44	18	21
45-54	38	34
55-64	121	73
65-74	147	85
75+	115	151
ALL	439	364

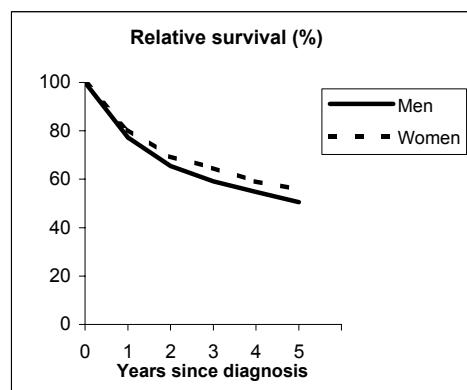


Observed and Relative survival (%)
(in parenthesis 95% confidence limits of 5 years survival)

	Men		Women		ALL	
	obs	rel	obs	rel	obs	rel
1 year	79	83	77	80	78	82
3 years	55	63	52	59	54	61
5 years	43	54	44	53	44	54
95% CI	(39-48)	(49-60)	(39-49)	(47-60)	(40-47)	(50-58)

VENETO - Incident cases 1990-'94

AGE CLASSES	Men	Women
15-44	35	21
45-54	92	84
55-64	258	146
65-74	306	223
75+	251	320
ALL	942	794



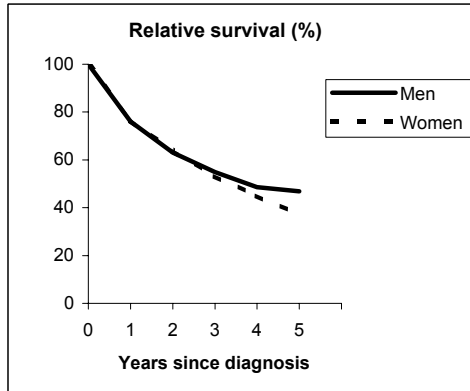
Observed and Relative survival (%)
(in parenthesis 95% confidence limits of 5 years survival)

	Men		Women		ALL	
	obs	rel	obs	rel	obs	rel
1 year	74	77	78	81	76	79
3 years	52	59	58	65	55	62
5 years	41	51	46	56	43	53
95% CI	(37-44)	(47-55)	(43-50)	(52-60)	(41-45)	(50-56)

RECTUM (ICD-IX 154)

PARMA - Incident cases 1990-'94

AGE CLASSES	Men	Women
15-44	1	6
45-54	29	17
55-64	51	47
65-74	93	64
75+	89	89
ALL	263	223

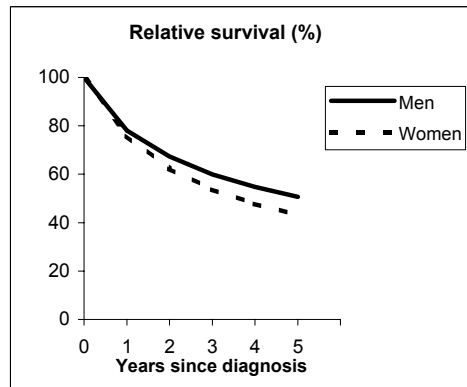


Observed and Relative survival (%)
(in parenthesis 95% confidence limits of 5 years survival)

	Men		Women		ALL	
	<i>obs</i>	<i>rel</i>	<i>obs</i>	<i>rel</i>	<i>obs</i>	<i>rel</i>
1 year	73	76	74	77	73	76
3 years	48	55	48	53	48	54
5 years	36	47	31	37	34	42
95% CI	(31-42)	(40-54)	(26-38)	(30-45)	(30-38)	(37-47)

MODENA - Incident cases 1990-'94

AGE CLASSES	Men	Women
15-44	6	6
45-54	30	30
55-64	81	58
65-74	145	73
75+	107	112
ALL	369	279



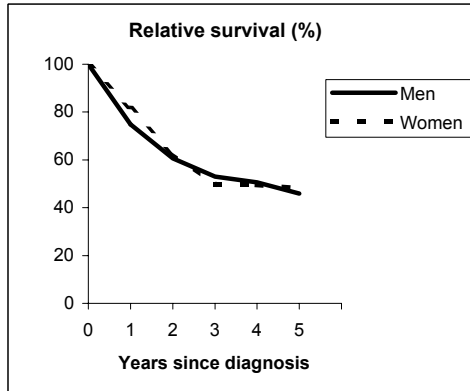
Observed and Relative survival (%)
(in parenthesis 95% confidence limits of 5 years survival)

	Men		Women		ALL	
	<i>obs</i>	<i>rel</i>	<i>obs</i>	<i>rel</i>	<i>obs</i>	<i>rel</i>
1 year	75	78	74	76	74	77
3 years	53	60	48	54	51	57
5 years	40	51	36	43	38	47
95% CI	(35-46)	(44-57)	(31-42)	(37-50)	(35-42)	(43-52)

RECTUM (ICD-IX 154)

FERRARA - Incident cases 1990-'94

AGE CLASSES	Men	Women
15-44	7	5
45-54	14	14
55-64	46	35
65-74	70	48
75+	67	60
ALL	204	162

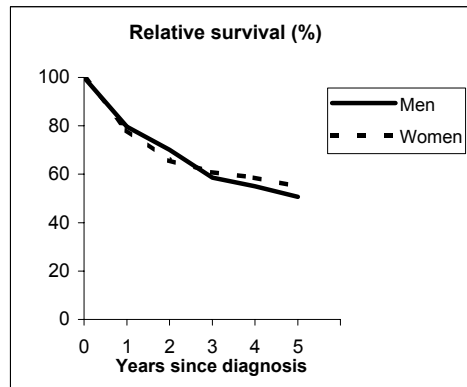


Observed and Relative survival (%)
(in parenthesis 95% confidence limits of 5 years survival)

	Men		Women		ALL	
	obs	rel	obs	rel	obs	rel
1 year	71	75	79	82	75	78
3 years	46	53	45	50	45	52
5 years	35	46	40	48	37	47
95% CI	(29-42)	(38-55)	(33-48)	(39-58)	(33-43)	(41-53)

ROMAGNA - Incident cases 1990-'94

AGE CLASSES	Men	Women
15-44	4	10
45-54	21	17
55-64	62	42
65-74	70	63
75+	78	102
ALL	235	234



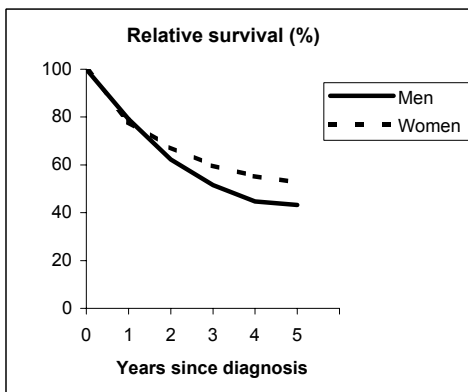
Observed and Relative survival (%)
(in parenthesis 95% confidence limits of 5 years survival)

	Men		Women		ALL	
	obs	rel	obs	rel	obs	rel
1 year	77	80	76	78	77	79
3 years	53	59	56	61	54	60
5 years	42	51	47	55	44	53
95% CI	(36-48)	(43-58)	(40-53)	(47-62)	(40-49)	(48-58)

RECTUM (ICD-IX 154)

MACERATA - Incident cases 1991-'94

AGE CLASSES	Men	Women
15-44	6	3
45-54	15	8
55-64	29	23
65-74	64	29
75+	52	55
ALL	166	118

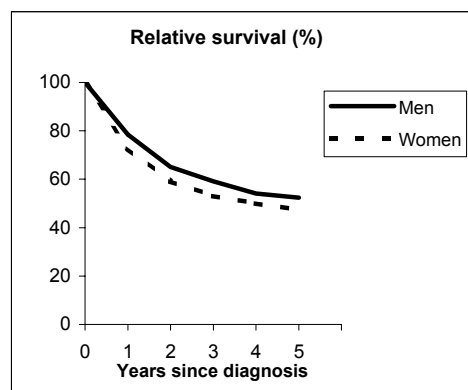


Observed and Relative survival (%)
(in parenthesis 95% confidence limits of 5 years survival)

	Men		Women		ALL	
	<i>obs</i>	<i>rel</i>	<i>obs</i>	<i>rel</i>	<i>obs</i>	<i>rel</i>
1 year	76	79	75	78	76	79
3 years	45	52	53	60	49	55
5 years	34	43	43	53	38	47
95% CI	(28-42)	(35-53)	(35-52)	(42-64)	(33-44)	(40-54)

FIRENZE-PRATO - Incident cases 1990-'94

AGE CLASSES	Men	Women
15-44	25	26
45-54	79	61
55-64	198	109
65-74	315	190
75+	240	317
ALL	857	703



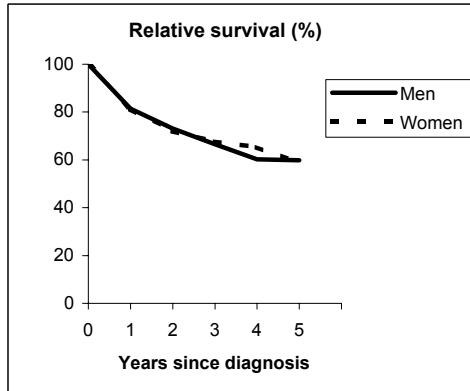
Observed and Relative survival (%)
(in parenthesis 95% confidence limits of 5 years survival)

	Men		Women		ALL	
	<i>obs</i>	<i>rel</i>	<i>obs</i>	<i>rel</i>	<i>obs</i>	<i>rel</i>
1 year	75	78	70	73	73	76
3 years	52	59	47	53	50	56
5 years	42	52	38	47	40	50
95% CI	(39-45)	(48-57)	(35-42)	(43-52)	(38-43)	(47-53)

RECTUM (ICD-IX 154)

UMBRIA - Incident cases 1994-'96

AGE CLASSES	Men	Women
15-44	12	10
45-54	28	37
55-64	60	54
65-74	200	102
75+	122	109
ALL	422	312

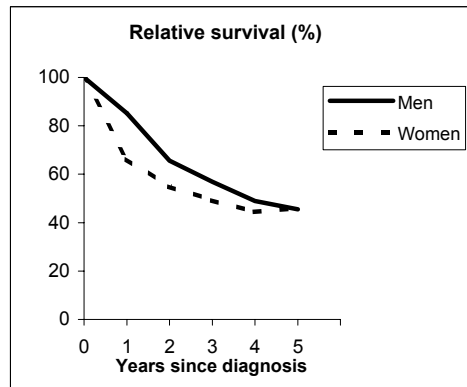


Observed and Relative survival (%)
(in parenthesis 95% confidence limits of 5 years survival)

	Men		Women		ALL	
	<i>obs</i>	<i>rel</i>	<i>obs</i>	<i>rel</i>	<i>obs</i>	<i>rel</i>
1 year	78	81	79	81	78	81
3 years	59	67	61	68	60	67
5 years	48	60	49	59	48	59
95% CI	(43-53)	(53-66)	(43-55)	(51-66)	(44-52)	(54-64)

LATINA - Incident cases 1990-'94

AGE CLASSES	Men	Women
15-44	5	6
45-54	21	13
55-64	37	20
65-74	44	18
75+	39	30
ALL	146	87



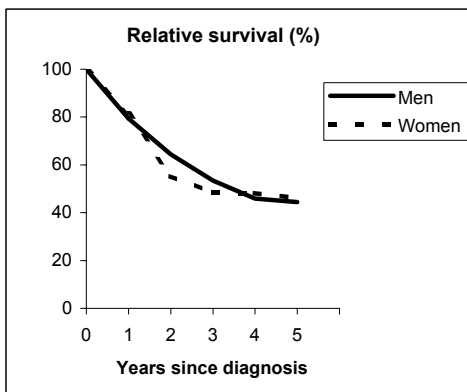
Observed and Relative survival (%)
(in parenthesis 95% confidence limits of 5 years survival)

	Men		Women		ALL	
	<i>obs</i>	<i>rel</i>	<i>obs</i>	<i>rel</i>	<i>obs</i>	<i>rel</i>
1 year	82	85	64	66	76	78
3 years	51	57	45	49	48	54
5 years	37	45	39	46	38	46
95% CI	(29-45)	(36-56)	(29-50)	(35-58)	(32-44)	(39-54)

RECTUM (ICD-IX 154)

SASSARI - Incident cases 1992-'94

AGE CLASSES	Men	Women
15-44	4	5
45-54	15	11
55-64	19	12
65-74	54	16
75+	38	19
ALL	130	63

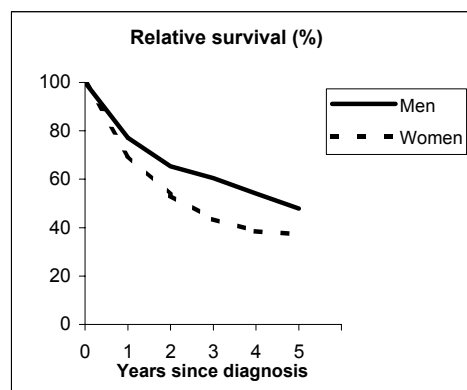


Observed and Relative survival (%)
(in parenthesis 95% confidence limits of 5 years survival)

	Men		Women		ALL	
	<i>obs</i>	<i>rel</i>	<i>obs</i>	<i>rel</i>	<i>obs</i>	<i>rel</i>
1 year	76	79	79	81	77	80
3 years	47	53	44	48	46	52
5 years	35	44	40	46	37	45
95% CI	(28-44)	(35-55)	(29-52)	(33-60)	(30-44)	(37-54)

RAGUSA - Incident cases 1990-'94

AGE CLASSES	Men	Women
15-44	6	4
45-54	9	6
55-64	18	16
65-74	39	23
75+	52	34
ALL	124	83



Observed and Relative survival (%)
(in parenthesis 95% confidence limits of 5 years survival)

	Men		Women		ALL	
	<i>obs</i>	<i>rel</i>	<i>obs</i>	<i>rel</i>	<i>obs</i>	<i>rel</i>
1 year	73	77	67	70	71	74
3 years	52	60	39	44	46	54
5 years	36	48	30	37	34	43
95% CI	(28-45)	(37-59)	(21-41)	(26-50)	(28-41)	(36-52)

RECTUM (ICD-IX 154)

Pool of Italian Registries

REGISTRY	Number of cases		
	Men	Women	Total
Torino	500	457	957
Genova	442	381	823
Varese	439	364	803
Veneto	942	794	1,736
Parma	263	223	486
Modena	369	279	648
Ferrara	204	162	366
Romagna	235	234	469
Macerata	166	118	284
Firenze-Prato	857	703	1,560
Umbria	422	312	734
Latina	146	87	233
Sassari	130	63	193
Ragusa	124	83	207
Italy	5,239	4,260	9,499



Observed and relative survival (%) by sex and age classes

	15-44		45-54		55-64		65-74		75+		ALL	
	obs	rel	obs	rel	obs	rel	obs	rel	obs	rel	obs	rel
Men												
1 year	84	84	84	84	84	85	78	80	60	66	75	78
3 years	66	67	64	65	63	65	55	61	31	41	51	58
5 years	54	54	52	53	52	56	43	51	20	35	40	49
95% CI	(46-61)	(46-62)	(47-56)	(48-58)	(49-55)	(53-59)	(41-45)	(49-54)	(18-22)	(31-39)	(38-41)	(48-51)
Women												
1 year	88	88	87	87	87	87	79	80	61	66	74	77
3 years	62	62	66	67	65	67	59	61	36	46	52	57
5 years	57	57	58	59	57	59	47	51	25	39	42	50
95% CI	(49-65)	(49-65)	(53-63)	(54-63)	(54-61)	(56-63)	(44-50)	(48-54)	(23-28)	(35-42)	(40-43)	(48-52)
Total												
1 year	86	86	85	86	85	86	78	80	61	66	75	77
3 years	64	65	65	66	64	66	56	61	34	44	51	58
5 years	55	56	55	56	54	57	44	51	23	37	40	50
95% CI	(50-61)	(50-61)	(51-58)	(52-59)	(52-56)	(55-60)	(43-46)	(49-53)	(22-24)	(35-39)	(39-41)	(48-51)

Five Years Age-adjusted Relative Survival of 1986-89 and 1990-94 incident cases

Men and Women

