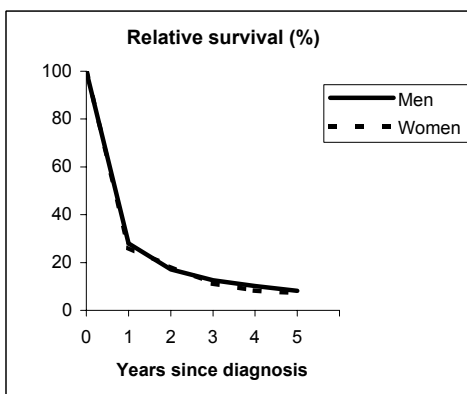


LIVER (ICD-IX 155)

TORINO - Incident cases 1990-'94

AGE CLASSES	Men	Women
15-44	14	3
45-54	30	7
55-64	115	26
65-74	151	60
75+	94	74
ALL	404	170

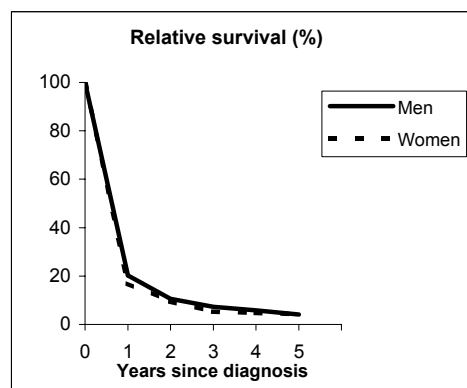


Observed and Relative survival (%)
(in parenthesis 95% confidence limits of 5 years survival)

	Men		Women		ALL	
	obs	rel	obs	rel	obs	rel
1 year	27	28	25	26	26	28
3 years	11	13	10	11	11	12
5 years	7	8	6	7	6	8
95% CI	(5-10)	(6-12)	(3-10)	(4-13)	(5-9)	(6-11)

GENOVA - Incident cases 1990-'94

AGE CLASSES	Men	Women
15-44	8	1
45-54	20	8
55-64	87	19
65-74	114	49
75+	101	70
ALL	330	147



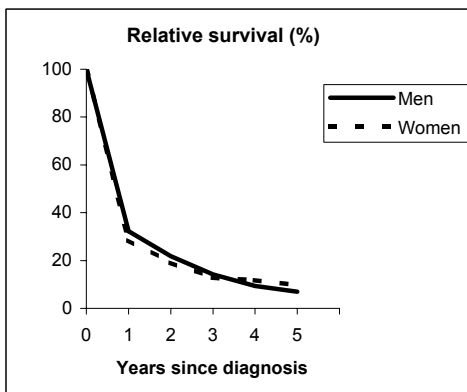
Observed and Relative survival (%)
(in parenthesis 95% confidence limits of 5 years survival)

	Men		Women		ALL	
	obs	rel	obs	rel	obs	rel
1 year	19	20	16	17	18	19
3 years	6	7	5	5	6	7
5 years	3	4	3	4	3	4
95% CI	(2-6)	(2-7)	(1-8)	(2-10)	(2-5)	(2-7)

LIVER (ICD-IX 155)

VARESE - Incident cases 1990-'94

AGE CLASSES	Men	Women
15-44	6	1
45-54	24	8
55-64	92	19
65-74	136	34
75+	84	81
ALL	342	143

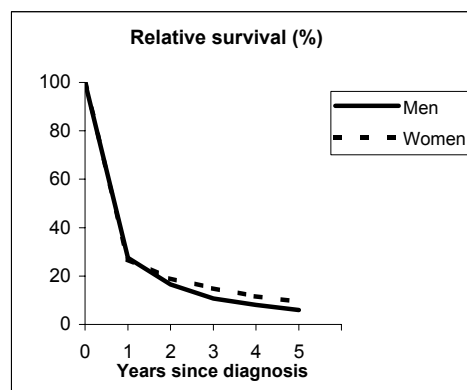


Observed and Relative survival (%)
(in parenthesis 95% confidence limits of 5 years survival)

	Men		Women		ALL	
	<i>obs</i>	<i>rel</i>	<i>obs</i>	<i>rel</i>	<i>obs</i>	<i>rel</i>
1 year	31	32	27	28	30	31
3 years	13	14	11	13	12	14
5 years	6	7	8	10	6	8
95% CI	(4-9)	(4-11)	(4-13)	(6-17)	(4-9)	(5-11)

VENETO - Incident cases 1990-'94

AGE CLASSES	Men	Women
15-44	19	10
45-54	115	19
55-64	325	78
65-74	477	187
75+	298	215
ALL	1,234	509



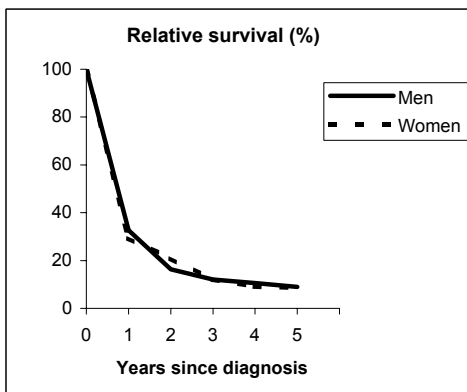
Observed and Relative survival (%)
(in parenthesis 95% confidence limits of 5 years survival)

	Men		Women		ALL	
	<i>obs</i>	<i>rel</i>	<i>obs</i>	<i>rel</i>	<i>obs</i>	<i>rel</i>
1 year	27	28	26	27	26	27
3 years	9	11	13	15	11	12
5 years	5	6	8	9	6	7
95% CI	(4-6)	(5-8)	(6-10)	(7-13)	(5-7)	(6-8)

LIVER (ICD-IX 155)

PARMA- Incident cases 1990-'94

AGE CLASSES	Men	Women
15-44	7	3
45-54	18	2
55-64	68	30
65-74	114	53
75+	86	49
ALL	293	137

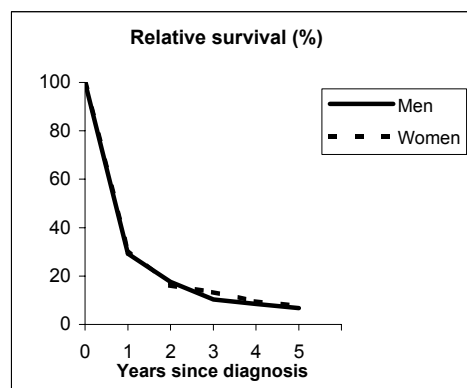


Observed and Relative survival (%)
(in parenthesis 95% confidence limits of 5 years survival)

	Men		Women		ALL	
	obs	rel	obs	rel	obs	rel
1 year	31	33	28	29	30	32
3 years	11	12	11	12	11	12
5 years	7	9	7	9	7	9
95% CI	(5-11)	(6-13)	(4-13)	(5-15)	(5-10)	(6-12)

MODENA - Incident cases 1990-'94

AGE CLASSES	Men	Women
15-44	1	4
45-54	14	6
55-64	71	20
65-74	129	59
75+	82	74
ALL	297	163



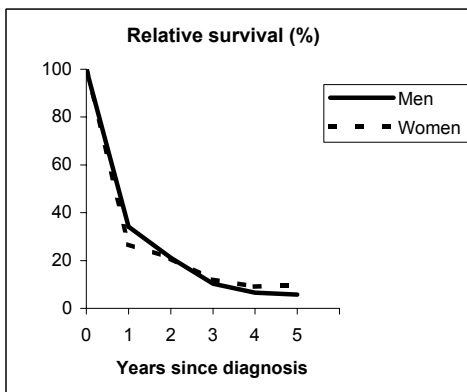
Observed and Relative survival (%)
(in parenthesis 95% confidence limits of 5 years survival)

	Men		Women		ALL	
	obs	rel	obs	rel	obs	rel
1 year	28	29	30	31	29	30
3 years	9	10	12	13	10	11
5 years	5	7	6	8	6	7
95% CI	(3-9)	(4-11)	(3-11)	(4-14)	(4-8)	(5-10)

LIVER (ICD-IX 155)

FERRARA - Incident cases 1990-'94

AGE CLASSES	Men	Women
15-44	2	1
45-54	9	2
55-64	37	14
65-74	63	29
75+	32	38
ALL	143	84

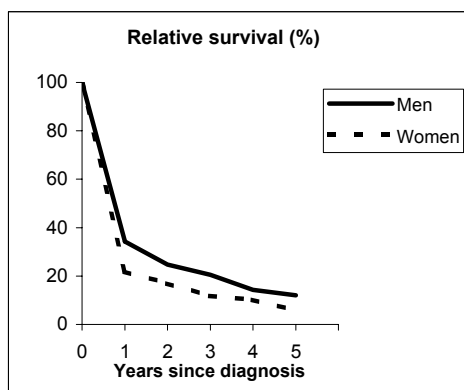


Observed and Relative survival (%)
(in parenthesis 95% confidence limits of 5 years survival)

	Men		Women		ALL	
	obs	rel	obs	rel	obs	rel
1 year	33	34	26	27	30	32
3 years	9	10	11	12	10	11
5 years	5	6	8	10	6	7
95% CI	(2-10)	(3-12)	(3-16)	(4-20)	(3-10)	(4-12)

ROMAGNA - Incident cases 1990-'94

AGE CLASSES	Men	Women
15-44	2	1
45-54	8	2
55-64	27	8
65-74	47	21
75+	46	25
ALL	130	57



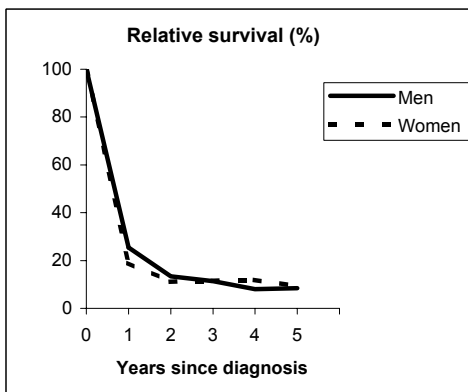
Observed and Relative survival (%)
(in parenthesis 95% confidence limits of 5 years survival)

	Men		Women		ALL	
	obs	rel	obs	rel	obs	rel
1 year	33	34	21	22	29	30
3 years	18	21	11	12	16	18
5 years	10	12	5	6	8	10
95% CI	(6-17)	(7-20)	(1-14)	(2-17)	(5-13)	(6-16)

LIVER (ICD-IX 155)

MACERATA- Incident cases 1991-'94

AGE CLASSES	Men	Women
15-44	0	0
45-54	4	3
55-64	17	9
65-74	39	13
75+	30	13
ALL	90	38

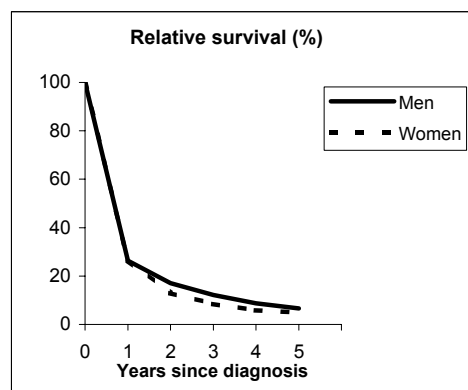


Observed and Relative survival (%)
(in parenthesis 95% confidence limits of 5 years survival)

	Men		Women		ALL	
	<i>obs</i>	<i>rel</i>	<i>obs</i>	<i>rel</i>	<i>obs</i>	<i>rel</i>
1 year	24	26	18	19	23	24
3 years	10	11	11	12	10	11
5 years	7	8	8	9	7	9
95% CI	(3-14)	(4-18)	(3-21)	(3-24)	(4-13)	(5-16)

FIRENZE-PRATO - Incident cases 1990-'94

AGE CLASSES	Men	Women
15-44	8	4
45-54	40	8
55-64	124	27
65-74	193	85
75+	111	102
ALL	476	226



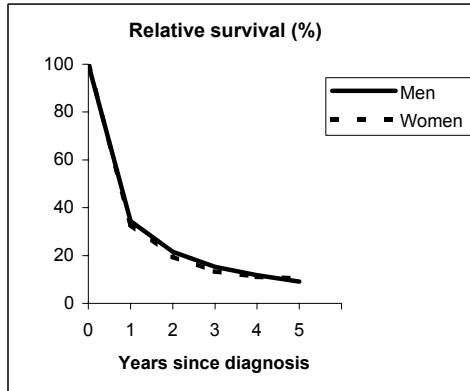
Observed and Relative survival (%)
(in parenthesis 95% confidence limits of 5 years survival)

	Men		Women		ALL	
	<i>obs</i>	<i>rel</i>	<i>obs</i>	<i>rel</i>	<i>obs</i>	<i>rel</i>
1 year	25	26	26	27	25	26
3 years	11	12	8	8	10	11
5 years	5	7	4	5	5	6
95% CI	(4-8)	(5-10)	(2-7)	(3-9)	(4-7)	(4-8)

LIVER (ICD-IX 155)

UMBRIA - Incident cases 1994-'96

AGE CLASSES	Men	Women
15-44	4	3
45-54	11	5
55-64	51	21
65-74	111	38
75+	73	64
ALL	250	131

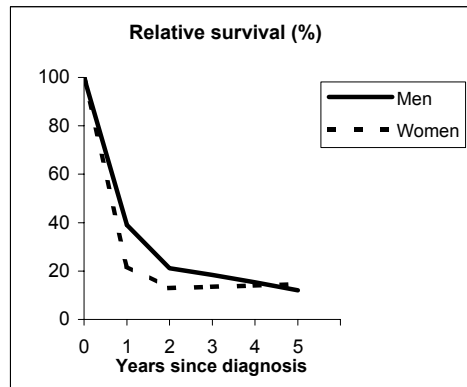


Observed and Relative survival (%)
(in parenthesis 95% confidence limits of 5 years survival)

	Men		Women		ALL	
	<i>obs</i>	<i>rel</i>	<i>obs</i>	<i>rel</i>	<i>obs</i>	<i>rel</i>
1 year	33	34	32	33	33	34
3 years	14	15	12	13	13	15
5 years	7	9	8	10	8	10
95% CI	(4-12)	(5-15)	(4-14)	(6-18)	(5-11)	(7-14)

LATINA - Incident cases 1990-'94

AGE CLASSES	Men	Women
15-44	3	2
45-54	7	3
55-64	14	5
65-74	22	12
75+	15	11
ALL	61	33



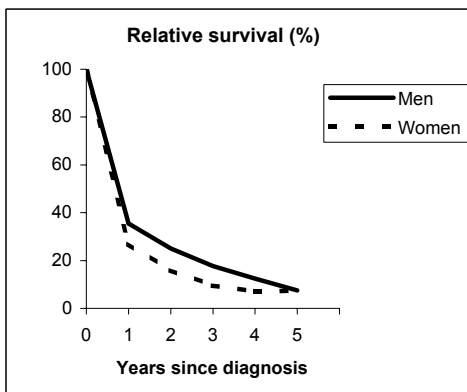
Observed and Relative survival (%)
(in parenthesis 95% confidence limits of 5 years survival)

	Men		Women		ALL	
	<i>obs</i>	<i>rel</i>	<i>obs</i>	<i>rel</i>	<i>obs</i>	<i>rel</i>
1 year	38	39	21	22	32	33
3 years	16	18	12	13	15	17
5 years	10	12	12	15	11	13
95% CI	(5-20)	(6-24)	(5-27)	(6-33)	(6-18)	(7-22)

LIVER (ICD-IX 155)

SASSARI - Incident cases 1992-'94

AGE CLASSES	Men	Women
15-44	4	0
45-54	11	3
55-64	32	20
65-74	45	33
75+	43	24
ALL	135	80

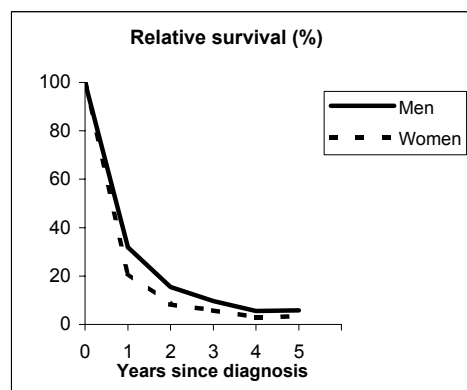


Observed and Relative survival (%)
(in parenthesis 95% confidence limits of 5 years survival)

	Men		Women		ALL	
	<i>obs</i>	<i>rel</i>	<i>obs</i>	<i>rel</i>	<i>obs</i>	<i>rel</i>
1 year	34	35	26	27	31	32
3 years	16	18	9	10	13	15
5 years	6	7	6	7	6	7
95% CI	(3-11)	(4-14)	(3-14)	(3-16)	(4-10)	(4-12)

RAGUSA - Incident cases 1990-'94

AGE CLASSES	Men	Women
15-44	0	1
45-54	12	3
55-64	24	6
65-74	43	11
75+	25	18
ALL	104	39



Observed and Relative survival (%)
(in parenthesis 95% confidence limits of 5 years survival)

	Men		Women		ALL	
	<i>obs</i>	<i>rel</i>	<i>obs</i>	<i>rel</i>	<i>obs</i>	<i>rel</i>
1 year	31	32	21	21	28	29
3 years	9	10	5	6	8	9
5 years	5	6	3	3	4	5
95% CI	(2-11)	(3-13)	(0-13)	(1-17)	(2-9)	(2-11)

LIVER (ICD-IX 155)

Pool of Italian Registries

REGISTRY	Number of cases		
	Men	Women	Total
Torino	404	170	574
Genova	330	147	477
Varese	342	143	485
Veneto	1,234	509	1,743
Parma	293	137	430
Modena	297	163	460
Ferrara	143	84	227
Romagna	130	57	187
Macerata	90	38	128
Firenze-Prato	476	226	702
Umbria	250	131	381
Latina	61	33	94
Sassari	135	80	215
Ragusa	104	39	143
Italy	4,289	1,957	6,246



Observed and relative survival (%) by sex and age classes

	15-44		45-54		55-64		65-74		75+		ALL	
	obs	rel	obs	rel	obs	rel	obs	rel	obs	rel	obs	rel
Men												
1 year	40	40	33	33	32	32	30	31	19	20	28	29
3 years	22	22	16	16	14	15	10	11	5	7	11	12
5 years	15	15	12	12	8	9	5	6	2	4	6	7
95% CI	(9-25)	(9-25)	(8-15)	(9-16)	(7-10)	(7-11)	(4-6)	(4-7)	(2-3)	(3-6)	(5-6)	(6-8)
Women												
1 year	50	50	35	35	38	38	30	30	16	17	26	27
3 years	32	32	21	21	18	19	11	12	6	7	11	12
5 years	24	24	17	17	12	13	6	6	3	5	6	8
95% CI	(12-40)	(12-40)	(10-26)	(10-27)	(9-17)	(10-17)	(4-8)	(5-9)	(2-5)	(3-7)	(5-8)	(7-9)
Total												
1 year	43	43	33	33	33	34	30	31	17	19	27	28
3 years	25	25	17	17	15	16	11	12	5	7	11	12
5 years	18	18	12	13	9	10	5	6	3	4	6	7
95% CI	(12-26)	(12-26)	(10-16)	(10-16)	(8-11)	(8-12)	(4-6)	(5-7)	(2-4)	(3-6)	(5-7)	(7-8)

Five Years Age-adjusted Relative Survival of 1986-89 and 1990-94 incident cases

Men and Women

