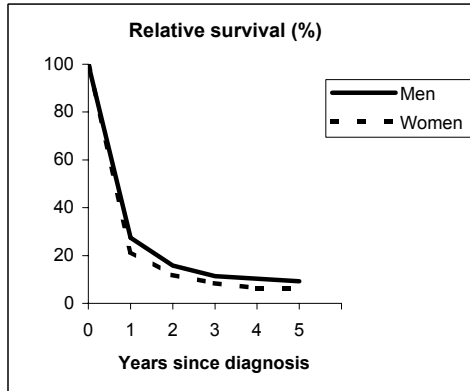


# GALLBLADDER (ICD-IX 156)

## TORINO - Incident cases 1990-'94

AGE CLASSES	Men	Women
15-44	3	4
45-54	16	15
55-64	32	45
65-74	47	71
75+	55	120
<b>ALL</b>	<b>153</b>	<b>255</b>

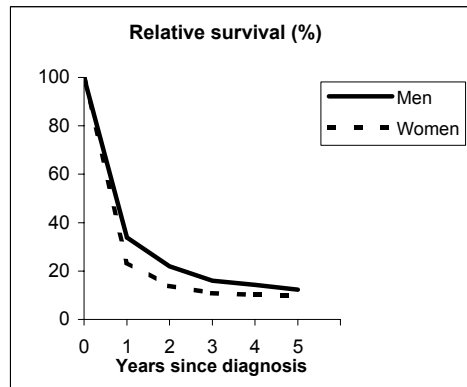


**Observed and Relative survival (%)**  
(in parenthesis 95% confidence limits of 5 years survival)

	Men		Women		ALL	
	<i>obs</i>	<i>rel</i>	<i>obs</i>	<i>rel</i>	<i>obs</i>	<i>rel</i>
1 year	26	27	21	22	23	24
3 years	10	11	7	8	8	10
<b>5 years</b>	<b>7</b>	<b>9</b>	<b>5</b>	<b>6</b>	<b>6</b>	<b>7</b>
95% CI	(4-12)	(5-16)	(3-9)	(4-11)	(4-9)	(5-11)

## GENOVA - Incident cases 1990-'94

AGE CLASSES	Men	Women
15-44	3	2
45-54	5	9
55-64	14	24
65-74	33	39
75+	42	109
<b>ALL</b>	<b>97</b>	<b>183</b>



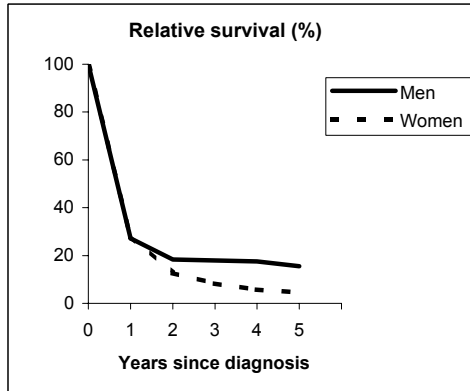
**Observed and Relative survival (%)**  
(in parenthesis 95% confidence limits of 5 years survival)

	Men		Women		ALL	
	<i>obs</i>	<i>rel</i>	<i>obs</i>	<i>rel</i>	<i>obs</i>	<i>rel</i>
1 year	32	34	22	24	26	27
3 years	13	16	9	11	11	13
<b>5 years</b>	<b>9</b>	<b>12</b>	<b>8</b>	<b>10</b>	<b>8</b>	<b>11</b>
95% CI	(5-16)	(6-23)	(5-12)	(6-16)	(5-12)	(7-16)

# GALLBLADDER (ICD-IX 156)

## VARESE - Incident cases 1990-'94

AGE CLASSES	Men	Women
15-44	0	1
45-54	6	13
55-64	19	28
65-74	33	46
75+	27	75
<b>ALL</b>	<b>85</b>	<b>163</b>

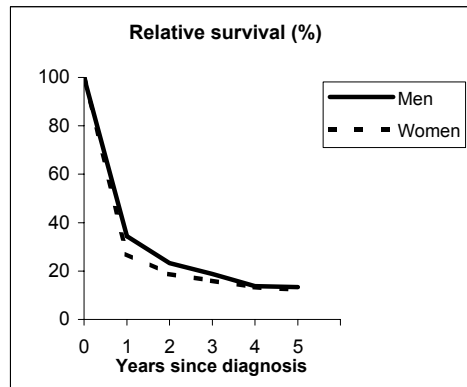


**Observed and Relative survival (%)**  
(in parenthesis 95% confidence limits of 5 years survival)

	Men		Women		ALL	
	<i>obs</i>	<i>rel</i>	<i>obs</i>	<i>rel</i>	<i>obs</i>	<i>rel</i>
1 year	26	27	27	28	27	28
3 years	15	18	7	8	10	12
<b>5 years</b>	<b>12</b>	<b>16</b>	<b>4</b>	<b>5</b>	<b>6</b>	<b>8</b>
95% CI	(7-20)	(9-27)	(2-8)	(2-10)	(4-10)	(5-13)

## VENETO - Incident cases 1990-'94

AGE CLASSES	Men	Women
15-44	4	6
45-54	23	23
55-64	48	49
65-74	66	119
75+	82	196
<b>ALL</b>	<b>223</b>	<b>393</b>



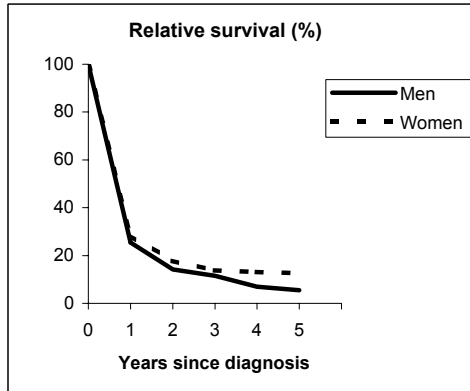
**Observed and Relative survival (%)**  
(in parenthesis 95% confidence limits of 5 years survival)

	Men		Women		ALL	
	<i>obs</i>	<i>rel</i>	<i>obs</i>	<i>rel</i>	<i>obs</i>	<i>rel</i>
1 year	33	34	26	27	28	30
3 years	16	19	14	16	15	17
<b>5 years</b>	<b>10</b>	<b>13</b>	<b>10</b>	<b>12</b>	<b>10</b>	<b>13</b>
95% CI	(7-15)	(9-19)	(7-13)	(9-17)	(8-13)	(10-16)

# GALLBLADDER (ICD-IX 156)

## PARMA - Incident cases 1990-'94

AGE CLASSES	Men	Women
15-44	0	1
45-54	5	5
55-64	18	9
65-74	23	21
75+	24	56
<b>ALL</b>	<b>70</b>	<b>92</b>

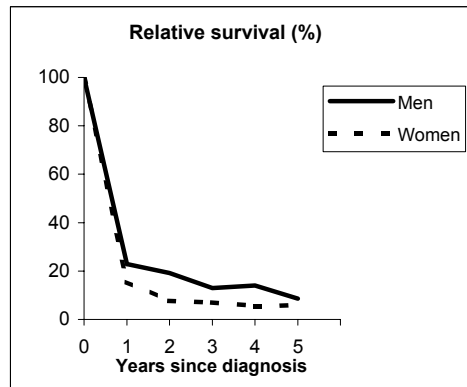


**Observed and Relative survival (%)**  
(in parenthesis 95% confidence limits of 5 years survival)

	Men		Women		ALL	
	<i>obs</i>	<i>rel</i>	<i>obs</i>	<i>rel</i>	<i>obs</i>	<i>rel</i>
1 year	24	25	27	28	26	27
3 years	10	12	12	14	11	13
<b>5 years</b>	<b>4</b>	<b>6</b>	<b>10</b>	<b>13</b>	<b>7</b>	<b>10</b>
95% CI	(1-12)	(2-15)	(5-18)	(7-23)	(4-12)	(6-16)

## MODENA - Incident cases 1990-'94

AGE CLASSES	Men	Women
15-44	0	0
45-54	2	7
55-64	10	19
65-74	18	34
75+	36	67
<b>ALL</b>	<b>66</b>	<b>127</b>



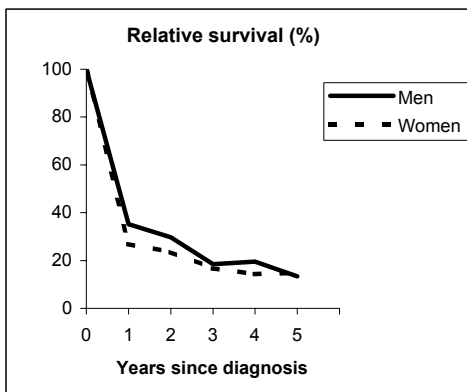
**Observed and Relative survival (%)**  
(in parenthesis 95% confidence limits of 5 years survival)

	Men		Women		ALL	
	<i>obs</i>	<i>rel</i>	<i>obs</i>	<i>rel</i>	<i>obs</i>	<i>rel</i>
1 year	22	23	15	15	17	18
3 years	11	13	6	7	8	9
<b>5 years</b>	<b>6</b>	<b>9</b>	<b>5</b>	<b>6</b>	<b>5</b>	<b>7</b>
95% CI	(2-15)	(3-21)	(2-10)	(3-12)	(3-9)	(4-12)

# GALLBLADDER (ICD-IX 156)

## FERRARA - Incident cases 1990-'94

AGE CLASSES	Men	Women
15-44	1	3
45-54	2	6
55-64	7	10
65-74	17	29
75+	18	26
<b>ALL</b>	<b>45</b>	<b>74</b>

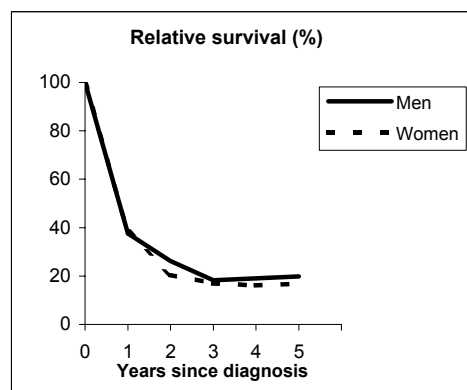


**Observed and Relative survival (%)**  
(in parenthesis 95% confidence limits of 5 years survival)

	Men		Women		ALL	
	<i>obs</i>	<i>rel</i>	<i>obs</i>	<i>rel</i>	<i>obs</i>	<i>rel</i>
1 year	33	35	26	27	29	30
3 years	16	18	15	17	15	17
<b>5 years</b>	<b>10</b>	<b>13</b>	<b>12</b>	<b>15</b>	<b>12</b>	<b>15</b>
95% CI	(4-23)	(5-31)	(7-22)	(8-26)	(7-19)	(9-24)

## ROMAGNA - Incident cases 1990-'94

AGE CLASSES	Men	Women
15-44	0	0
45-54	2	5
55-64	14	6
65-74	19	29
75+	15	38
<b>ALL</b>	<b>50</b>	<b>78</b>



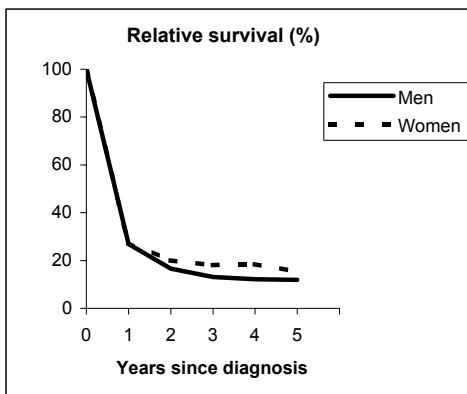
**Observed and Relative survival (%)**  
(in parenthesis 95% confidence limits of 5 years survival)

	Men		Women		ALL	
	<i>obs</i>	<i>rel</i>	<i>obs</i>	<i>rel</i>	<i>obs</i>	<i>rel</i>
1 year	36	38	37	38	37	38
3 years	16	18	15	17	16	17
<b>5 years</b>	<b>16</b>	<b>20</b>	<b>14</b>	<b>17</b>	<b>15</b>	<b>18</b>
95% CI	(8-29)	(10-35)	(8-24)	(10-28)	(10-22)	(12-27)

# GALLBLADDER (ICD-IX 156)

## FIRENZE-PRATO - Incident cases 1990-'94

AGE CLASSES	Men	Women
15-44	1	1
45-54	13	8
55-64	35	32
65-74	51	77
75+	59	116
<b>ALL</b>	<b>159</b>	<b>234</b>

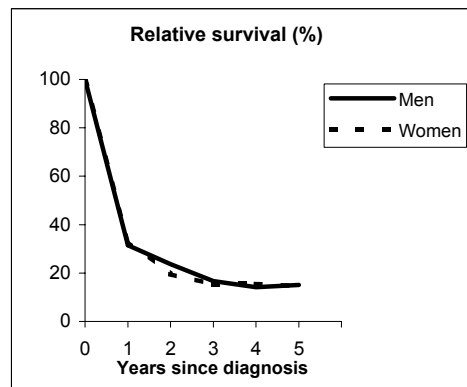


**Observed and Relative survival (%)**  
(in parenthesis 95% confidence limits of 5 years survival)

	Men		Women		ALL	
	obs	rel	obs	rel	obs	rel
1 year	26	27	26	27	26	27
3 years	11	13	16	18	14	16
<b>5 years</b>	<b>9</b>	<b>12</b>	<b>12</b>	<b>15</b>	<b>11</b>	<b>14</b>
95% CI	(6-15)	(7-19)	(9-17)	(11-21)	(8-15)	(10-18)

## UMBRIA - Incident cases 1994-'96

AGE CLASSES	Men	Women
15-44	2	1
45-54	1	7
55-64	8	12
65-74	34	46
75+	25	86
<b>ALL</b>	<b>70</b>	<b>152</b>



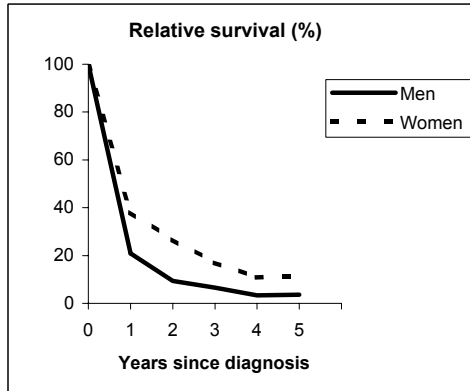
**Observed and Relative survival (%)**  
(in parenthesis 95% confidence limits of 5 years survival)

	Men		Women		ALL	
	obs	rel	obs	rel	obs	rel
1 year	30	32	32	33	31	33
3 years	14	17	13	15	14	16
<b>5 years</b>	<b>11</b>	<b>15</b>	<b>11</b>	<b>14</b>	<b>11</b>	<b>15</b>
95% CI	(6-21)	(8-28)	(7-18)	(9-23)	(8-16)	(10-21)

# GALLBLADDER (ICD-IX 156)

## LATINA - Incident cases 1990-'94

AGE CLASSES	Men	Women
15-44	1	0
45-54	3	7
55-64	11	17
65-74	10	14
75+	10	13
<b>ALL</b>	<b>35</b>	<b>51</b>

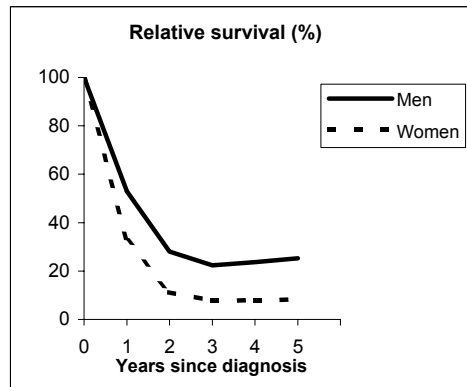


**Observed and Relative survival (%)**  
(in parenthesis 95% confidence limits of 5 years survival)

	Men		Women		ALL	
	<i>obs</i>	<i>rel</i>	<i>obs</i>	<i>rel</i>	<i>obs</i>	<i>rel</i>
1 year	20	21	37	38	30	31
3 years	6	7	16	17	12	13
<b>5 years</b>	<b>3</b>	<b>4</b>	<b>10</b>	<b>11</b>	<b>7</b>	<b>8</b>
95% CI	(1-15)	(1-18)	(4-21)	(5-24)	(3-14)	(4-17)

## SASSARI - Incident cases 1992-'94

AGE CLASSES	Men	Women
15-44	0	0
45-54	3	7
55-64	3	9
65-74	13	25
75+	13	16
<b>ALL</b>	<b>32</b>	<b>57</b>



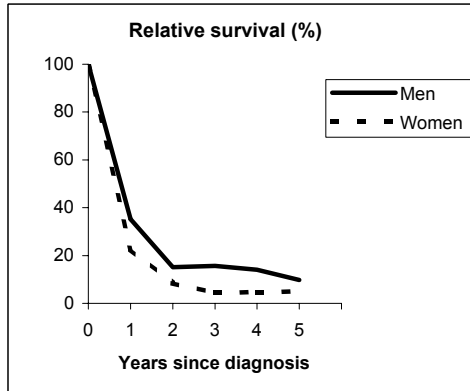
**Observed and Relative survival (%)**  
(in parenthesis 95% confidence limits of 5 years survival)

	Men		Women		ALL	
	<i>obs</i>	<i>rel</i>	<i>obs</i>	<i>rel</i>	<i>obs</i>	<i>rel</i>
1 year	50	53	32	33	38	40
3 years	19	22	7	8	11	13
<b>5 years</b>	<b>19</b>	<b>25</b>	<b>7</b>	<b>8</b>	<b>11</b>	<b>14</b>
95% CI	(9-35)	(12-47)	(3-17)	(3-20)	(6-19)	(8-24)

# GALLBLADDER (ICD-IX 156)

## RAGUSA - Incident cases 1990-'94

AGE CLASSES	Men	Women
15-44	2	0
45-54	7	4
55-64	11	13
65-74	15	25
75+	15	36
<b>ALL</b>	<b>50</b>	<b>78</b>



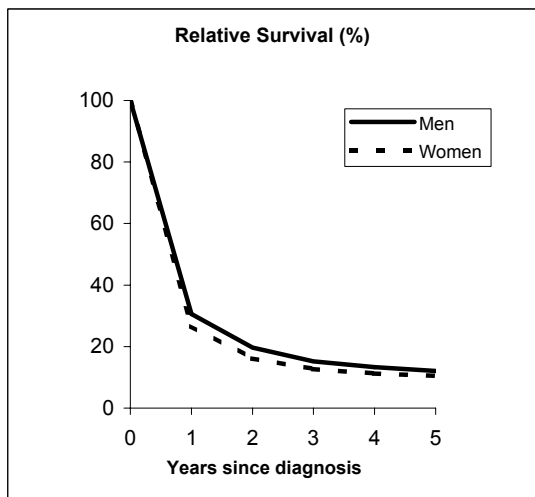
**Observed and Relative survival (%)**  
(in parenthesis 95% confidence limits of 5 years survival)

	<i>Men</i>		<i>Women</i>		<b>ALL</b>	
	<i>obs</i>	<i>rel</i>	<i>obs</i>	<i>rel</i>	<i>obs</i>	<i>rel</i>
1 year	34	35	22	23	27	28
3 years	14	16	4	4	8	9
<b>5 years</b>	<b>8</b>	<b>10</b>	<b>4</b>	<b>5</b>	<b>5</b>	<b>7</b>
95% CI	(3-19)	(4-23)	(1-11)	(2-14)	(3-11)	(3-14)

# GALLBLADDER (ICD-IX 156)

## Pool of Italian Registries

REGISTRY	Number of cases		
	Men	Women	Total
Torino	153	255	408
Genova	97	183	280
Varese	85	163	248
Veneto	223	393	616
Parma	70	92	162
Modena	66	127	193
Ferrara	45	74	119
Romagna	50	78	128
Macerata	19	32	51
Firenze-Prato	159	234	393
Umbria	70	152	222
Latina	35	51	86
Sassari	32	57	89
Ragusa	50	78	128
<b>Italy</b>	<b>1,154</b>	<b>1,969</b>	<b>3,123</b>



### Observed and relative survival (%) by sex and age classes

	15-44		45-54		55-64		65-74		75+		ALL	
	obs	rel	obs	rel	obs	rel	obs	rel	obs	rel	obs	rel
<b>Men</b>												
1 year	61	61	48	49	34	34	32	33	18	20	29	31
3 years	39	39	26	27	15	16	15	16	7	9	13	15
<b>5 years</b>	<b>31</b>	<b>31</b>	<b>20</b>	<b>20</b>	<b>11</b>	<b>12</b>	<b>11</b>	<b>13</b>	<b>4</b>	<b>7</b>	<b>9</b>	<b>12</b>
95% CI	(14-55)	(14-56)	(13-29)	(13-30)	(8-16)	(8-17)	(8-14)	(10-17)	(2-6)	(4-11)	(8-11)	(10-14)
<b>Women</b>												
1 year	42	42	43	43	30	31	30	30	19	21	26	27
3 years	21	21	23	23	12	13	13	14	8	10	11	13
<b>5 years</b>	<b>21</b>	<b>21</b>	<b>19</b>	<b>20</b>	<b>10</b>	<b>10</b>	<b>10</b>	<b>11</b>	<b>5</b>	<b>8</b>	<b>8</b>	<b>11</b>
95% CI	(9-43)	(9-44)	(13-27)	(13-28)	(7-14)	(7-15)	(8-13)	(9-14)	(4-7)	(6-11)	(7-10)	(9-12)
<b>Total</b>												
1 year	51	51	45	45	32	32	31	31	19	21	27	28
3 years	30	30	24	25	14	14	14	15	8	10	12	14
<b>5 years</b>	<b>26</b>	<b>27</b>	<b>19</b>	<b>20</b>	<b>10</b>	<b>11</b>	<b>10</b>	<b>12</b>	<b>5</b>	<b>8</b>	<b>9</b>	<b>11</b>
95% CI	(15-43)	(15-43)	(15-25)	(15-26)	(8-13)	(8-14)	(9-12)	(10-14)	(4-6)	(6-10)	(8-10)	(10-12)

### Five Years Age-adjusted Relative Survival of 1986-89 and 1990-94 incident cases

