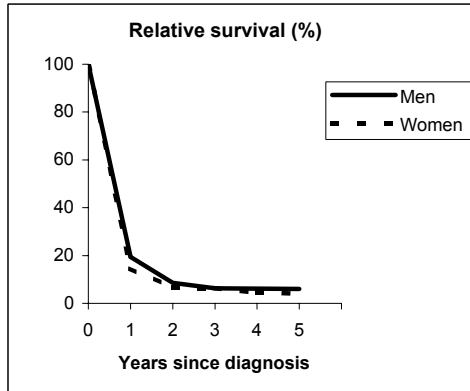


# PANCREAS (ICD-IX 157)

## TORINO - Incident cases 1990-'94

AGE CLASSES	Men	Women
15-44	9	10
45-54	24	19
55-64	78	38
65-74	83	72
75+	73	124
<b>ALL</b>	<b>267</b>	<b>263</b>

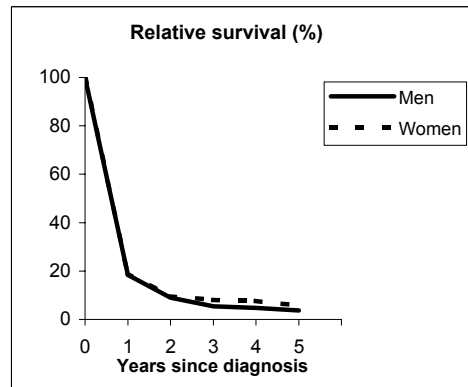


**Observed and Relative survival (%)**  
(in parenthesis 95% confidence limits of 5 years survival)

	Men		Women		ALL	
	<i>obs</i>	<i>rel</i>	<i>obs</i>	<i>rel</i>	<i>obs</i>	<i>rel</i>
1 year	19	19	14	15	16	17
3 years	6	6	6	6	6	6
<b>5 years</b>	<b>5</b>	<b>6</b>	<b>3</b>	<b>4</b>	<b>4</b>	<b>5</b>
95% CI	(3-8)	(4-10)	(2-6)	(2-8)	(3-6)	(3-8)

## GENOVA - Incident cases 1990-'94

AGE CLASSES	Men	Women
15-44	9	3
45-54	19	12
55-64	54	38
65-74	75	97
75+	76	148
<b>ALL</b>	<b>233</b>	<b>298</b>



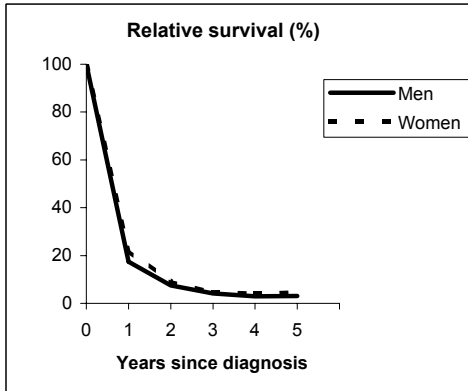
**Observed and Relative survival (%)**  
(in parenthesis 95% confidence limits of 5 years survival)

	Men		Women		ALL	
	<i>obs</i>	<i>rel</i>	<i>obs</i>	<i>rel</i>	<i>obs</i>	<i>rel</i>
1 year	18	18	18	19	18	19
3 years	5	5	7	8	6	7
<b>5 years</b>	<b>3</b>	<b>4</b>	<b>5</b>	<b>6</b>	<b>4</b>	<b>5</b>
95% CI	(1-6)	(2-8)	(3-8)	(3-10)	(2-6)	(3-7)

# PANCREAS (ICD-IX 157)

## VARESE - Incident cases 1990-'94

AGE CLASSES	Men	Women
15-44	2	8
45-54	36	16
55-64	69	35
65-74	79	68
75+	59	102
<b>ALL</b>	<b>245</b>	<b>229</b>

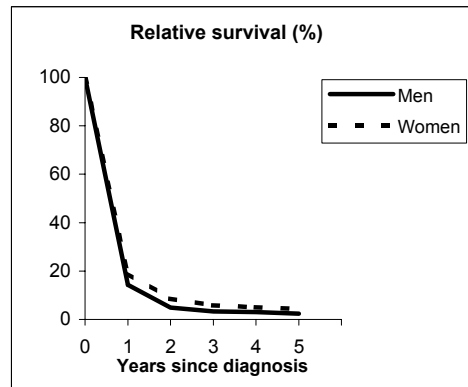


**Observed and Relative survival (%)**  
(in parenthesis 95% confidence limits of 5 years survival)

	Men		Women		ALL	
	obs	rel	obs	rel	obs	rel
1 year	17	17	21	22	19	20
3 years	4	4	4	4	4	4
<b>5 years</b>	<b>2</b>	<b>3</b>	<b>3</b>	<b>4</b>	<b>3</b>	<b>4</b>
95% CI	(1-5)	(1-6)	(2-7)	(2-8)	(2-5)	(2-6)

## VENETO - Incident cases 1990-'94

AGE CLASSES	Men	Women
15-44	16	13
45-54	71	35
55-64	156	103
65-74	242	213
75+	179	320
<b>ALL</b>	<b>664</b>	<b>684</b>



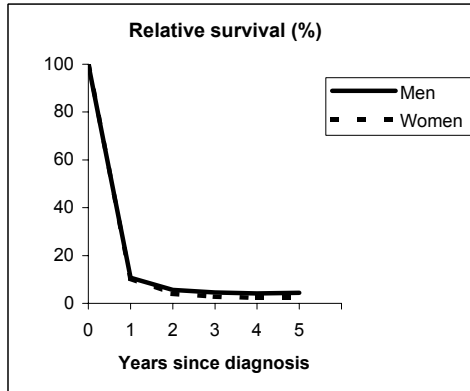
**Observed and Relative survival (%)**  
(in parenthesis 95% confidence limits of 5 years survival)

	Men		Women		ALL	
	obs	rel	obs	rel	obs	rel
1 year	14	14	18	19	16	17
3 years	3	3	5	6	4	5
<b>5 years</b>	<b>2</b>	<b>2</b>	<b>3</b>	<b>4</b>	<b>3</b>	<b>3</b>
95% CI	(1-3)	(1-4)	(2-5)	(3-6)	(2-4)	(2-5)

# PANCREAS (ICD-IX 157)

## PARMA - Incident cases 1990-'94

AGE CLASSES	Men	Women
15-44	4	5
45-54	14	5
55-64	39	17
65-74	51	41
75+	69	93
<b>ALL</b>	<b>177</b>	<b>161</b>

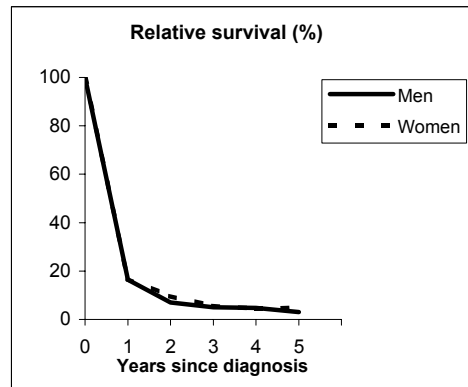


**Observed and Relative survival (%)**  
(in parenthesis 95% confidence limits of 5 years survival)

	Men		Women		ALL	
	<i>obs</i>	<i>rel</i>	<i>obs</i>	<i>rel</i>	<i>obs</i>	<i>rel</i>
1 year	10	11	10	10	10	11
3 years	4	5	2	3	3	4
<b>5 years</b>	<b>3</b>	<b>4</b>	<b>2</b>	<b>2</b>	<b>3</b>	<b>3</b>
95% CI	(2-7)	(2-9)	(1-5)	(1-7)	(1-5)	(2-6)

## MODENA - Incident cases 1990-'94

AGE CLASSES	Men	Women
15-44	3	3
45-54	20	10
55-64	43	34
65-74	75	53
75+	63	79
<b>ALL</b>	<b>204</b>	<b>179</b>



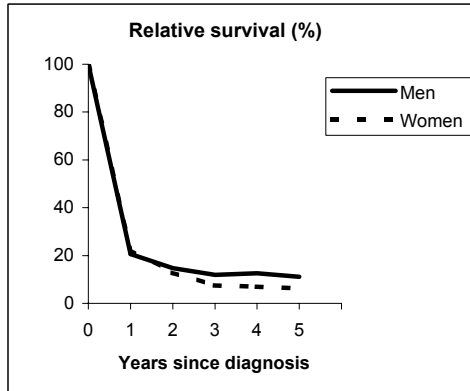
**Observed and Relative survival (%)**  
(in parenthesis 95% confidence limits of 5 years survival)

	Men		Women		ALL	
	<i>obs</i>	<i>rel</i>	<i>obs</i>	<i>rel</i>	<i>obs</i>	<i>rel</i>
1 year	16	16	16	17	16	17
3 years	4	5	5	6	5	5
<b>5 years</b>	<b>2</b>	<b>3</b>	<b>4</b>	<b>5</b>	<b>3</b>	<b>4</b>
95% CI	(1-6)	(1-7)	(2-8)	(2-10)	(2-5)	(2-7)

# PANCREAS (ICD-IX 157)

## FERRARA - Incident cases 1990-'94

AGE CLASSES	Men	Women
15-44	3	3
45-54	8	4
55-64	27	26
65-74	53	39
75+	36	65
<b>ALL</b>	<b>127</b>	<b>137</b>

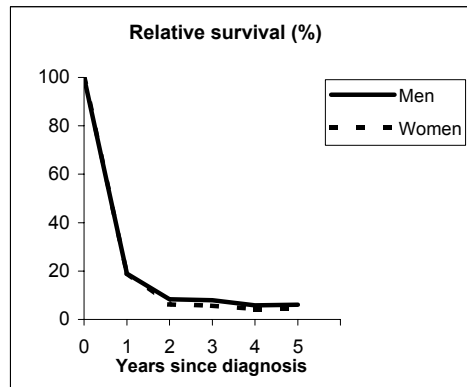


**Observed and Relative survival (%)**  
(in parenthesis 95% confidence limits of 5 years survival)

	Men		Women		ALL	
	<i>obs</i>	<i>rel</i>	<i>obs</i>	<i>rel</i>	<i>obs</i>	<i>rel</i>
1 year	20	21	22	22	21	22
3 years	10	12	7	8	8	10
<b>5 years</b>	<b>9</b>	<b>11</b>	<b>5</b>	<b>6</b>	<b>7</b>	<b>9</b>
95% CI	(5-15)	(6-19)	(2-10)	(3-13)	(4-11)	(5-13)

## ROMAGNA - Incident cases 1990-'94

AGE CLASSES	Men	Women
15-44	4	1
45-54	9	4
55-64	34	19
65-74	38	42
75+	58	72
<b>ALL</b>	<b>143</b>	<b>138</b>



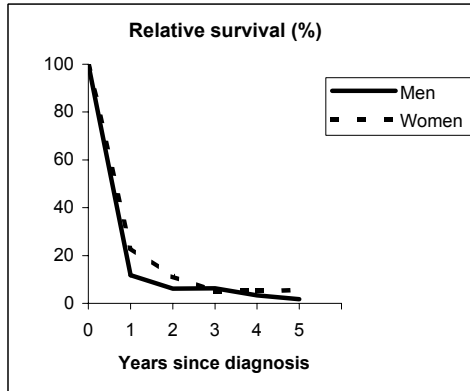
**Observed and Relative survival (%)**  
(in parenthesis 95% confidence limits of 5 years survival)

	Men		Women		ALL	
	<i>obs</i>	<i>rel</i>	<i>obs</i>	<i>rel</i>	<i>obs</i>	<i>rel</i>
1 year	18	19	19	19	19	19
3 years	7	8	5	6	6	7
<b>5 years</b>	<b>5</b>	<b>6</b>	<b>4</b>	<b>4</b>	<b>4</b>	<b>5</b>
95% CI	(2-10)	(3-12)	(2-8)	(2-10)	(2-7)	(3-9)

# PANCREAS (ICD-IX 157)

## MACERATA - Incident cases 1991-'94

AGE CLASSES	Men	Women
15-44	3	2
45-54	5	3
55-64	15	11
65-74	29	20
75+	18	31
<b>ALL</b>	<b>70</b>	<b>67</b>

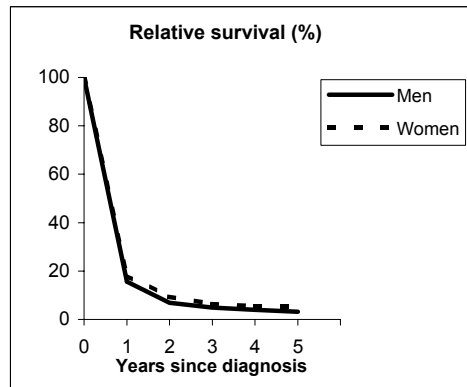


**Observed and Relative survival (%)**  
(in parenthesis 95% confidence limits of 5 years survival)

	Men		Women		ALL	
	<i>obs</i>	<i>rel</i>	<i>obs</i>	<i>rel</i>	<i>obs</i>	<i>rel</i>
1 year	11	12	22	23	17	17
3 years	6	6	4	5	5	6
<b>5 years</b>	<b>1</b>	<b>2</b>	<b>4</b>	<b>6</b>	<b>3</b>	<b>4</b>
95% CI	(0-8)	(0-9)	(2-12)	(2-15)	(1-7)	(1-9)

## FIRENZE-PRATO - Incident cases 1990-'94

AGE CLASSES	Men	Women
15-44	10	5
45-54	31	20
55-64	91	57
65-74	133	116
75+	130	202
<b>ALL</b>	<b>395</b>	<b>400</b>



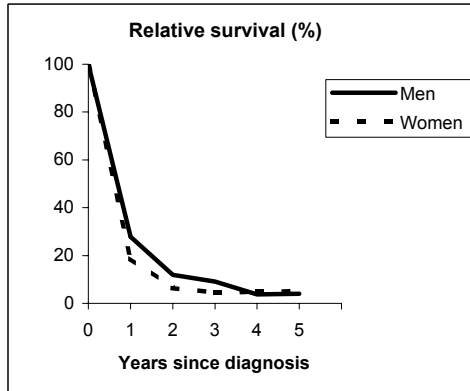
**Observed and Relative survival (%)**  
(in parenthesis 95% confidence limits of 5 years survival)

	Men		Women		ALL	
	<i>obs</i>	<i>rel</i>	<i>obs</i>	<i>rel</i>	<i>obs</i>	<i>rel</i>
1 year	15	16	17	18	16	17
3 years	4	5	6	6	5	6
<b>5 years</b>	<b>2</b>	<b>3</b>	<b>4</b>	<b>5</b>	<b>3</b>	<b>4</b>
95% CI	(1-5)	(2-6)	(3-7)	(3-9)	(2-5)	(3-6)

# PANCREAS (ICD-IX 157)

## UMBRIA - Incident cases 1994-'96

AGE CLASSES	Men	Women
15-44	5	2
45-54	16	8
55-64	43	16
65-74	47	49
75+	54	81
<b>ALL</b>	<b>165</b>	<b>156</b>

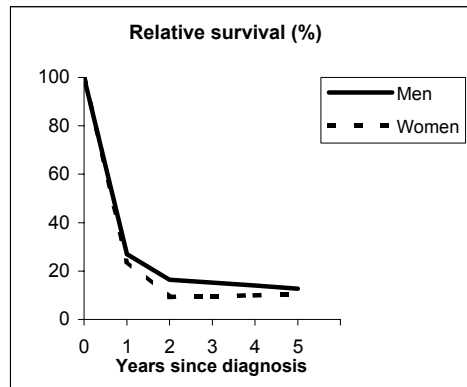


**Observed and Relative survival (%)**  
(in parenthesis 95% confidence limits of 5 years survival)

	Men		Women		ALL	
	<i>obs</i>	<i>rel</i>	<i>obs</i>	<i>rel</i>	<i>obs</i>	<i>rel</i>
1 year	27	28	18	19	22	23
3 years	8	9	4	4	6	7
<b>5 years</b>	<b>3</b>	<b>4</b>	<b>4</b>	<b>5</b>	<b>3</b>	<b>5</b>
95% CI	(1-7)	(2-9)	(2-8)	(2-11)	(2-6)	(2-8)

## LATINA - Incident cases 1990-'94

AGE CLASSES	Men	Women
15-44	1	1
45-54	13	2
55-64	26	8
65-74	10	13
75+	15	10
<b>ALL</b>	<b>65</b>	<b>34</b>



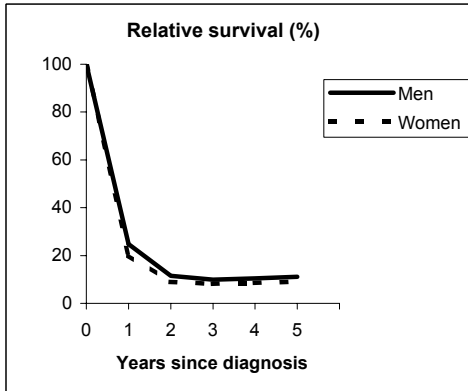
**Observed and Relative survival (%)**  
(in parenthesis 95% confidence limits of 5 years survival)

	Men		Women		ALL	
	<i>obs</i>	<i>rel</i>	<i>obs</i>	<i>rel</i>	<i>obs</i>	<i>rel</i>
1 year	26	27	24	24	25	26
3 years	14	15	9	10	12	13
<b>5 years</b>	<b>11</b>	<b>13</b>	<b>9</b>	<b>10</b>	<b>10</b>	<b>12</b>
95% CI	(5-21)	(6-24)	(3-23)	(4-27)	(6-18)	(7-21)

# PANCREAS (ICD-IX 157)

## SASSARI - Incident cases 1992-'94

AGE CLASSES	Men	Women
15-44	1	3
45-54	4	4
55-64	23	12
65-74	39	30
75+	39	49
<b>ALL</b>	<b>106</b>	<b>98</b>

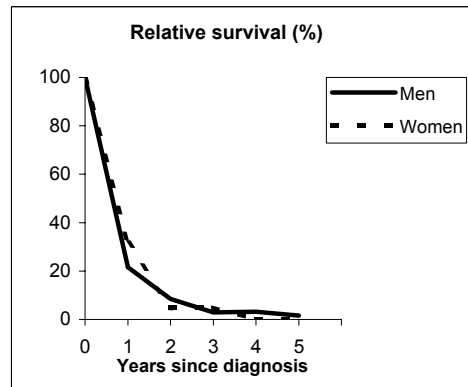


**Observed and Relative survival (%)**  
(in parenthesis 95% confidence limits of 5 years survival)

	Men		Women		ALL	
	obs	rel	obs	rel	obs	rel
1 year	24	25	19	20	22	23
3 years	8	10	7	8	8	9
<b>5 years</b>	<b>8</b>	<b>11</b>	<b>7</b>	<b>9</b>	<b>8</b>	<b>10</b>
95% CI	(5-15)	(6-20)	(4-14)	(4-18)	(5-12)	(6-16)

## RAGUSA - Incident cases 1990-'94

AGE CLASSES	Men	Women
15-44	0	0
45-54	5	1
55-64	21	11
65-74	26	14
75+	26	20
<b>ALL</b>	<b>78</b>	<b>46</b>



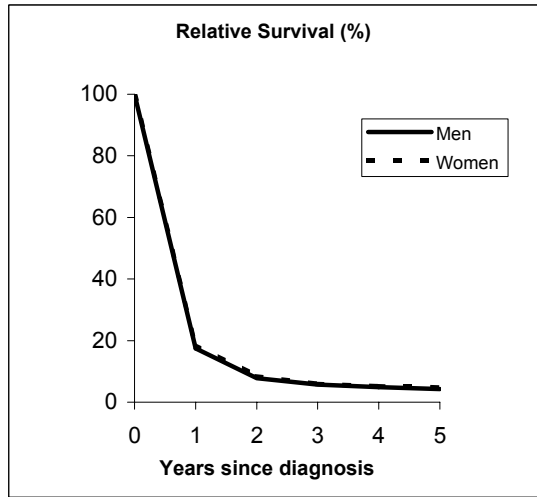
**Observed and Relative survival (%)**  
(in parenthesis 95% confidence limits of 5 years survival)

	Men		Women		ALL	
	obs	rel	obs	rel	obs	rel
1 year	21	21	30	32	24	25
3 years	3	3	4	5	3	4
<b>5 years</b>	<b>1</b>	<b>2</b>	<b>0</b>	<b>0</b>	<b>1</b>	<b>1</b>
95% CI	(0-7)	(0-9)	#DIV/0!	#DIV/0!	(0-4)	(0-6)

# PANCREAS (ICD-IX 157)

## Pool of Italian Registries

REGISTRY	Number of cases		
	Men	Women	Total
Torino	267	263	530
Genova	233	298	531
Varese	245	229	474
Veneto	664	684	1,348
Parma	177	161	338
Modena	204	179	383
Ferrara	127	137	264
Romagna	143	138	281
Macerata	70	67	137
Firenze-Prato	395	400	795
Umbria	165	156	321
Latina	65	34	99
Sassari	106	98	204
Ragusa	78	46	124
<b>Italy</b>	<b>2,939</b>	<b>2,890</b>	<b>5,829</b>



### Observed and relative survival (%) by sex and age classes

	15-44		45-54		55-64		65-74		75+		ALL	
	obs	rel	obs	rel	obs	rel	obs	rel	obs	rel	obs	rel
<b>Men</b>												
1 year	33	33	21	21	19	20	17	17	12	13	17	17
3 years	13	13	8	8	6	7	5	6	2	3	5	6
<b>5 years</b>	<b>7</b>	<b>7</b>	<b>7</b>	<b>7</b>	<b>4</b>	<b>5</b>	<b>3</b>	<b>4</b>	<b>2</b>	<b>3</b>	<b>3</b>	<b>4</b>
95% CI	(3-16)	(3-16)	(4-10)	(4-10)	(3-6)	(3-7)	(2-5)	(3-6)	(1-3)	(2-4)	(3-4)	(4-5)
<b>Women</b>												
1 year	42	42	31	31	24	24	19	19	13	14	18	19
3 years	29	29	13	13	8	8	5	5	3	4	5	6
<b>5 years</b>	<b>24</b>	<b>24</b>	<b>12</b>	<b>12</b>	<b>6</b>	<b>6</b>	<b>3</b>	<b>3</b>	<b>2</b>	<b>3</b>	<b>4</b>	<b>5</b>
95% CI	(15-36)	(15-36)	(8-18)	(8-18)	(4-9)	(4-9)	(2-5)	(2-5)	(1-3)	(2-4)	(3-5)	(4-6)
<b>Total</b>												
1 year	37	37	24	24	21	21	18	18	13	14	17	18
3 years	20	20	10	10	7	7	5	5	3	3	5	6
<b>5 years</b>	<b>15</b>	<b>15</b>	<b>8</b>	<b>9</b>	<b>5</b>	<b>5</b>	<b>3</b>	<b>4</b>	<b>2</b>	<b>3</b>	<b>4</b>	<b>5</b>
95% CI	(9-22)	(10-22)	(6-11)	(6-12)	(4-6)	(4-7)	(3-4)	(3-5)	(1-2)	(2-4)	(3-4)	(4-5)

### Five Years Age-adjusted Relative Survival of 1986-89 and 1990-94 incident cases

