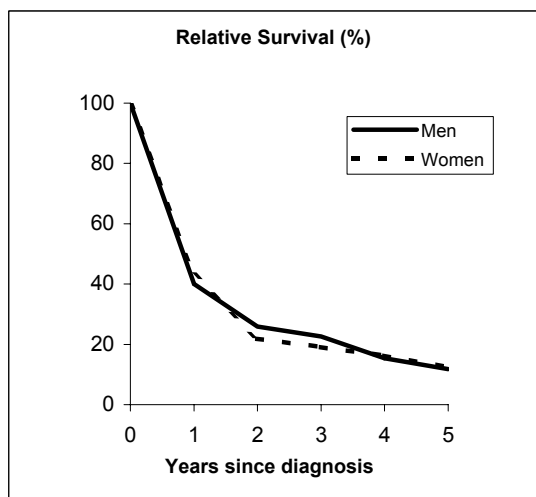


# MESOTHELIOMA OF THE PERITONEUM

## Pool of Italian Registries

REGISTRY	Number of cases		
	Men	Women	Total
Torino	4	4	8
Genova	4	5	9
Varese	3	4	7
Veneto	6	9	15
Parma	1	2	3
Modena	3	3	6
Ferrara	1	0	1
Romagna	1	5	6
Macerata	2	0	2
Firenze-Prato	2	1	3
Umbria	0	0	0
Latina	0	0	0
Sassari	0	0	0
Ragusa	6	4	10
<b>Italy</b>	<b>28</b>	<b>33</b>	<b>61</b>



### Observed and relative survival (%) by sex and age classes

	15-44		45-54		55-64		65-74		75+		ALL	
	obs	rel	obs	rel	obs	rel	obs	rel	obs	rel	obs	rel
<b>Men</b>												
1 year	17	17	33	33	50	51	60	61	33	36	39	40
3 years	17	17	33	34	13	13	20	22	33	44	21	23
<b>5 years</b>	<b>0</b>	<b>0</b>	<b>33</b>	<b>34</b>	<b>0</b>	<b>0</b>	<b>20</b>	<b>23</b>	<b>0</b>	<b>0</b>	<b>11</b>	<b>12</b>
95% CI	-	-	(10-70)	(10-72)	-	-	(4-62)	(4-72)	-	-	(4-27)	(4-30)
<b>Women</b>												
1 year	75	75	14	14	60	60	50	51	29	30	42	43
3 years	50	50	14	14	20	20	20	21	0	0	18	19
<b>5 years</b>	<b>50</b>	<b>50</b>	<b>14</b>	<b>14</b>	<b>0</b>	<b>0</b>	<b>10</b>	<b>11</b>	<b>0</b>	<b>0</b>	<b>11</b>	<b>12</b>
95% CI	(15-85)	(15-85)	(3-51)	(3-52)	-	-	(2-40)	(2-44)	-	-	(4-27)	(5-30)
<b>Total</b>												
1 year	40	40	23	23	54	54	53	54	30	32	41	42
3 years	30	30	23	23	15	16	20	21	10	12	20	21
<b>5 years</b>	<b>20</b>	<b>20</b>	<b>23</b>	<b>24</b>	<b>0</b>	<b>0</b>	<b>13</b>	<b>15</b>	<b>0</b>	<b>0</b>	<b>11</b>	<b>12</b>
95% CI	(6-51)	(6-51)	(8-50)	(8-51)	-	-	(4-38)	(4-42)	-	-	(5-22)	(6-24)