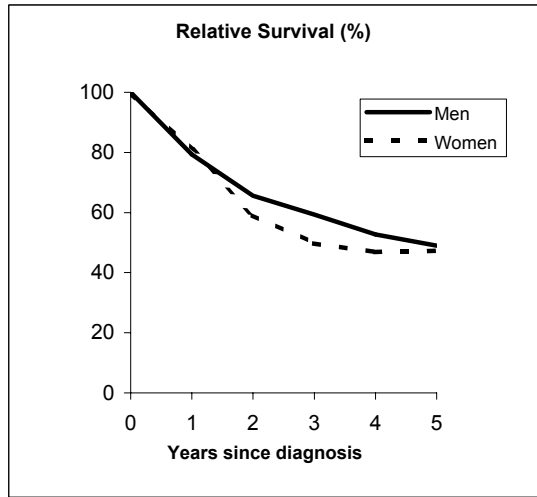


# NASAL CAVITY (ICD-IX 160)

## Pool of Italian Registries

REGISTRY	Number of cases		
	Men	Women	Total
Torino	25	9	34
Genova	21	14	35
Varese	19	13	32
Veneto	62	14	76
Parma	10	5	15
Modena	4	5	9
Ferrara	7	1	8
Romagna	7	6	13
Macerata	7	0	7
Firenze-Prato	39	13	52
Umbria	8	8	16
Latina	4	1	5
Sassari	9	5	14
Ragusa	4	1	5
<b>Italy</b>	<b>226</b>	<b>95</b>	<b>321</b>



### Observed and relative survival (%) by sex and age classes

	15-44		45-54		55-64		65-74		75+		ALL	
	obs	rel	obs	rel	obs	rel	obs	rel	obs	rel	obs	rel
<b>Men</b>												
1 year	84	84	88	88	81	82	73	75	65	71	77	79
3 years	37	37	64	65	64	67	48	53	44	60	54	59
<b>5 years</b>	<b>37</b>	<b>37</b>	<b>52</b>	<b>53</b>	<b>53</b>	<b>57</b>	<b>37</b>	<b>44</b>	<b>20</b>	<b>35</b>	<b>42</b>	<b>49</b>
95% CI	(19-59)	(19-59)	(33-70)	(34-72)	(43-64)	(46-68)	(26-49)	(31-59)	(10-36)	(17-63)	(36-49)	(42-57)
<b>Women</b>												
1 year	80	80	100	100	81	82	84	85	68	75	78	81
3 years	60	60	67	67	56	57	40	42	34	45	44	50
<b>5 years</b>	<b>60</b>	<b>60</b>	<b>67</b>	<b>68</b>	<b>56</b>	<b>58</b>	<b>36</b>	<b>39</b>	<b>23</b>	<b>37</b>	<b>39</b>	<b>47</b>
95% CI	(31-83)	(31-83)	(30-90)	(30-92)	(33-77)	(34-79)	(20-55)	(22-60)	(12-39)	(20-63)	(30-49)	(36-60)
<b>Total</b>												
1 year	83	83	90	91	81	82	76	78	67	73	77	80
3 years	45	45	65	65	63	65	46	50	39	52	51	57
<b>5 years</b>	<b>45</b>	<b>45</b>	<b>55</b>	<b>56</b>	<b>54</b>	<b>57</b>	<b>36</b>	<b>42</b>	<b>22</b>	<b>36</b>	<b>41</b>	<b>48</b>
95% CI	(28-62)	(29-63)	(38-71)	(39-73)	(44-63)	(47-67)	(27-47)	(32-55)	(13-33)	(23-55)	(36-47)	(42-55)