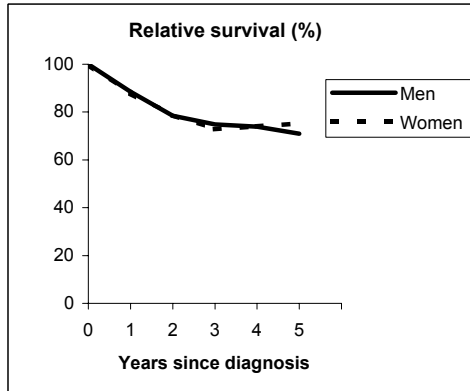


LARYNX (ICD-IX 161)

TORINO - Incident cases 1990-'94

AGE CLASSES	Men	Women
15-44	9	4
45-54	53	3
55-64	128	10
65-74	100	10
75+	53	3
ALL	343	30

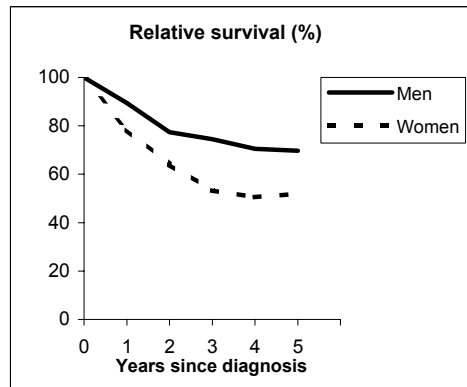


Observed and Relative survival (%)
(in parenthesis 95% confidence limits of 5 years survival)

	Men		Women		ALL	
	obs	rel	obs	rel	obs	rel
1 year	86	88	87	88	86	88
3 years	68	75	70	73	69	75
5 years	61	71	70	75	62	71
95% CI	(56-66)	(65-77)	(52-83)	(56-90)	(57-66)	(65-77)

GENOVA - Incident cases 1990-'94

AGE CLASSES	Men	Women
15-44	11	0
45-54	55	3
55-64	120	9
65-74	111	8
75+	49	6
ALL	346	26



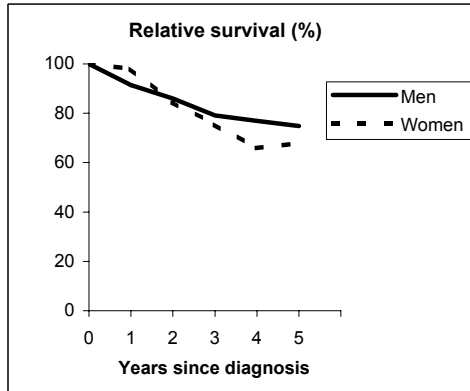
Observed and Relative survival (%)
(in parenthesis 95% confidence limits of 5 years survival)

	Men		Women		ALL	
	obs	rel	obs	rel	obs	rel
1 year	87	89	77	78	86	89
3 years	68	74	50	53	67	73
5 years	60	70	46	52	59	68
95% CI	(54-65)	(64-76)	(29-65)	(32-73)	(54-64)	(62-74)

LARYNX (ICD-IX 161)

VARESE - Incident cases 1990-'94

AGE CLASSES	Men	Women
15-44	6	1
45-54	47	2
55-64	116	10
65-74	82	1
75+	44	5
ALL	295	19

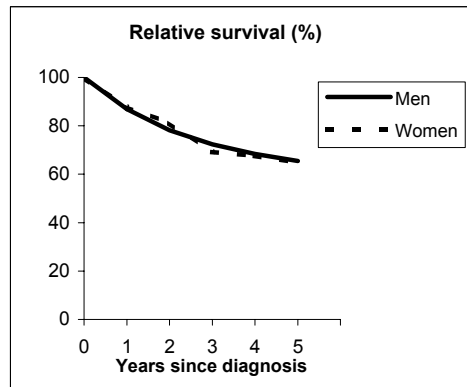


Observed and Relative survival (%)
(in parenthesis 95% confidence limits of 5 years survival)

	Men		Women		ALL	
	<i>obs</i>	<i>rel</i>	<i>obs</i>	<i>rel</i>	<i>obs</i>	<i>rel</i>
1 year	89	91	95	98	89	92
3 years	72	79	68	75	72	79
5 years	64	75	58	68	63	74
95% CI	(58-69)	(68-81)	(36-77)	(43-90)	(58-68)	(68-81)

VENETO - Incident cases 1990-'94

AGE CLASSES	Men	Women
15-44	24	2
45-54	177	13
55-64	412	24
65-74	310	34
75+	146	26
ALL	1,069	99



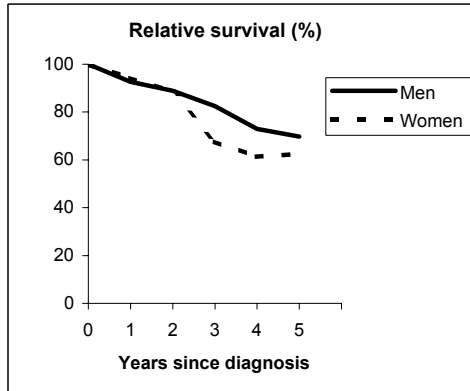
Observed and Relative survival (%)
(in parenthesis 95% confidence limits of 5 years survival)

	Men		Women		ALL	
	<i>obs</i>	<i>rel</i>	<i>obs</i>	<i>rel</i>	<i>obs</i>	<i>rel</i>
1 year	85	87	86	88	85	87
3 years	66	72	65	69	66	72
5 years	56	65	57	65	56	65
95% CI	(53-59)	(62-69)	(47-67)	(54-75)	(54-59)	(62-69)

LARYNX (ICD-IX 161)

PARMA - Incident cases 1990-'94

AGE CLASSES	Men	Women
15-44	4	0
45-54	30	0
55-64	53	8
65-74	53	3
75+	26	3
ALL	166	14

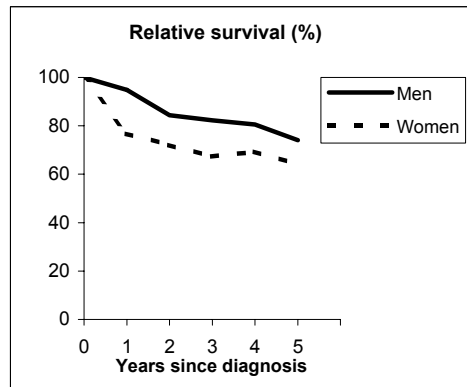


Observed and Relative survival (%)
(in parenthesis 95% confidence limits of 5 years survival)

	Men		Women		ALL	
	<i>obs</i>	<i>rel</i>	<i>obs</i>	<i>rel</i>	<i>obs</i>	<i>rel</i>
1 year	90	93	93	94	91	93
3 years	76	82	64	68	75	81
5 years	60	70	57	62	60	69
95% CI	(53-67)	(61-78)	(33-79)	(36-86)	(53-67)	(61-77)

MODENA - Incident cases 1990-'94

AGE CLASSES	Men	Women
15-44	5	0
45-54	36	2
55-64	71	2
65-74	97	7
75+	30	5
ALL	239	16



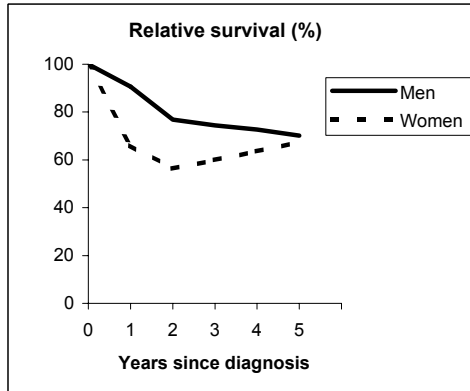
Observed and Relative survival (%)
(in parenthesis 95% confidence limits of 5 years survival)

	Men		Women		ALL	
	<i>obs</i>	<i>rel</i>	<i>obs</i>	<i>rel</i>	<i>obs</i>	<i>rel</i>
1 year	92	95	75	77	91	94
3 years	76	82	63	67	75	81
5 years	64	74	56	64	63	73
95% CI	(57-70)	(67-81)	(33-77)	(38-88)	(57-69)	(66-80)

LARYNX (ICD-IX 161)

FERRARA - Incident cases 1990-'94

AGE CLASSES	Men	Women
15-44	3	0
45-54	25	1
55-64	53	2
65-74	58	2
75+	21	3
ALL	160	8

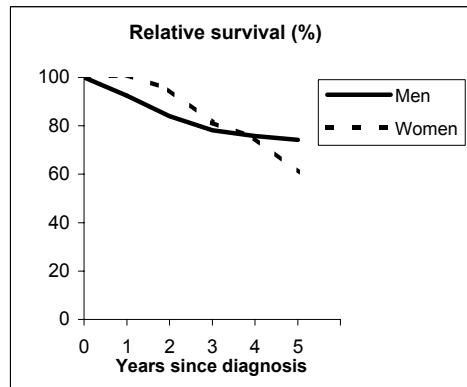


Observed and Relative survival (%)
(in parenthesis 95% confidence limits of 5 years survival)

	Men		Women		ALL	
	<i>obs</i>	<i>rel</i>	<i>obs</i>	<i>rel</i>	<i>obs</i>	<i>rel</i>
1 year	88	91	63	66	87	90
3 years	68	74	50	60	67	74
5 years	60	70	50	67	59	70
95% CI	(52-67)	(61-79)	(22-78)	(29-106)	(52-66)	(61-79)

ROMAGNA - Incident cases 1990-'94

AGE CLASSES	Men	Women
15-44	3	3
45-54	17	0
55-64	49	6
65-74	75	3
75+	41	2
ALL	185	14



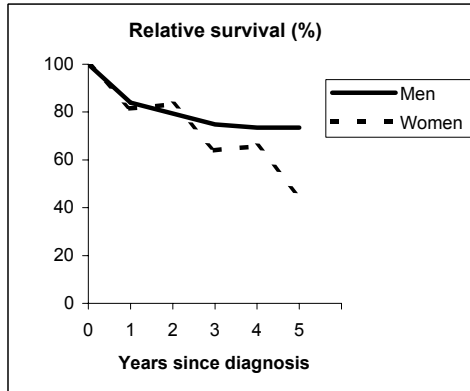
Observed and Relative survival (%)
(in parenthesis 95% confidence limits of 5 years survival)

	Men		Women		ALL	
	<i>obs</i>	<i>rel</i>	<i>obs</i>	<i>rel</i>	<i>obs</i>	<i>rel</i>
1 year	90	92	100	101	91	93
3 years	72	78	79	81	73	78
5 years	65	74	57	61	64	73
95% CI	(57-71)	(66-82)	(33-79)	(35-84)	(57-70)	(65-80)

LARYNX (ICD-IX 161)

MACERATA - Incident cases 1991-'94

AGE CLASSES	Men	Women
15-44	2	1
45-54	15	0
55-64	28	2
65-74	37	0
75+	13	2
ALL	95	5

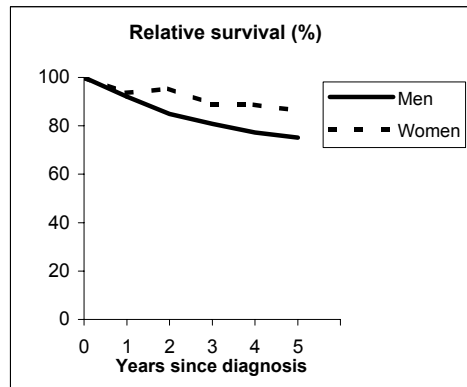


Observed and Relative survival (%)
(in parenthesis 95% confidence limits of 5 years survival)

	Men		Women		ALL	
	obs	rel	obs	rel	obs	rel
1 year	82	84	80	81	82	84
3 years	69	75	60	64	69	74
5 years	64	73	40	45	63	72
95% CI	(54-73)	(62-84)	(12-77)	(13-87)	(53-72)	(61-82)

FIRENZE-PRATO - Incident cases 1990-'94

AGE CLASSES	Men	Women
15-44	19	3
45-54	78	7
55-64	200	11
65-74	185	17
75+	82	13
ALL	564	51



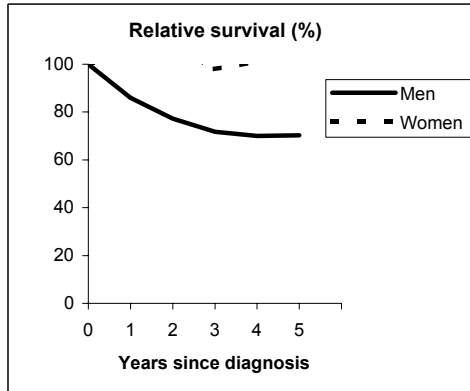
Observed and Relative survival (%)
(in parenthesis 95% confidence limits of 5 years survival)

	Men		Women		ALL	
	obs	rel	obs	rel	obs	rel
1 year	90	92	92	94	90	92
3 years	75	81	84	89	76	81
5 years	65	75	78	86	66	76
95% CI	(61-69)	(70-80)	(65-87)	(72-96)	(63-70)	(72-80)

LARYNX (ICD-IX 161)

UMBRIA - Incident cases 1994-'96

AGE CLASSES	Men	Women
15-44	1	0
45-54	21	2
55-64	58	3
65-74	68	2
75+	39	2
ALL	187	9

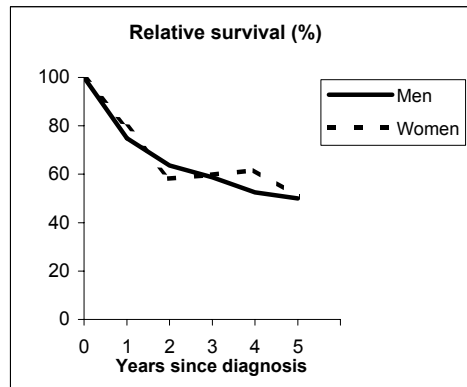


Observed and Relative survival (%)
(in parenthesis 95% confidence limits of 5 years survival)

	Men		Women		ALL	
	<i>obs</i>	<i>rel</i>	<i>obs</i>	<i>rel</i>	<i>obs</i>	<i>rel</i>
1 year	83	86	100	104	84	87
3 years	65	72	89	98	66	73
5 years	60	70	89	105	61	72
95% CI	(52-67)	(61-79)	(56-98)	(66-115)	(54-68)	(63-80)

LATINA - Incident cases 1990-'94

AGE CLASSES	Men	Women
15-44	2	0
45-54	20	1
55-64	42	4
65-74	27	1
75+	19	3
ALL	110	9



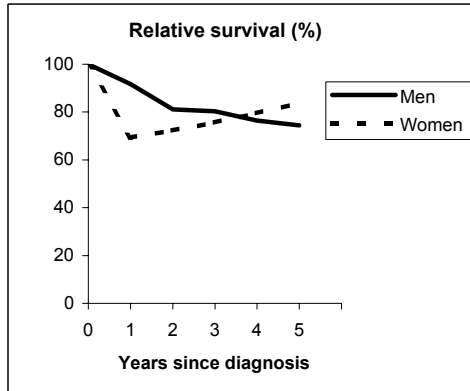
Observed and Relative survival (%)
(in parenthesis 95% confidence limits of 5 years survival)

	Men		Women		ALL	
	<i>obs</i>	<i>rel</i>	<i>obs</i>	<i>rel</i>	<i>obs</i>	<i>rel</i>
1 year	73	75	78	79	73	75
3 years	54	59	56	60	54	59
5 years	43	50	44	51	43	50
95% CI	(34-52)	(40-61)	(19-73)	(22-84)	(34-52)	(40-61)

LARYNX (ICD-IX 161)

SASSARI - Incident cases 1992-'94

AGE CLASSES	Men	Women
15-44	5	0
45-54	19	0
55-64	38	1
65-74	29	1
75+	14	1
ALL	105	3



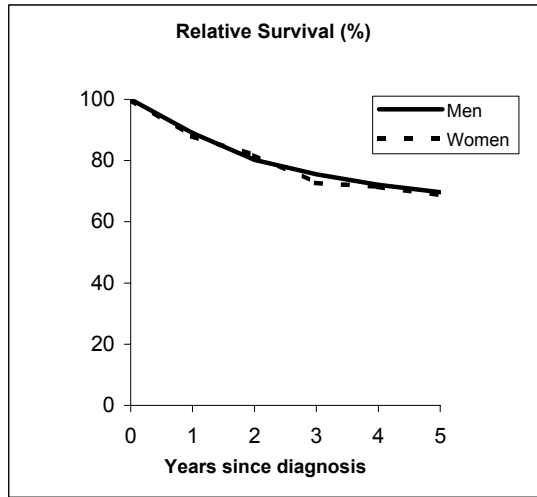
Observed and Relative survival (%)
(in parenthesis 95% confidence limits of 5 years survival)

	<i>Men</i>		<i>Women</i>		ALL	
	<i>obs</i>	<i>rel</i>	<i>obs</i>	<i>rel</i>	<i>obs</i>	<i>rel</i>
1 year	90	92	67	69	89	91
3 years	74	80	67	76	74	80
5 years	65	74	67	84	65	75
95% CI	(55-73)	(64-84)	(21-94)	(26-118)	(55-73)	(64-84)

LARYNX (ICD-IX 161)

Pool of Italian Registries

REGISTRY	Number of cases		
	Men	Women	Total
Torino	343	30	373
Genova	346	26	372
Varese	295	19	314
Veneto	1,069	99	1,168
Parma	166	14	180
Modena	239	16	255
Ferrara	160	8	168
Romagna	185	14	199
Macerata	95	5	100
Firenze-Prato	564	51	615
Umbria	187	9	196
Latina	110	9	119
Sassari	105	3	108
Ragusa	50	7	57
Italy	3,914	310	4,224



Observed and relative survival (%) by sex and age classes

	15-44		45-54		55-64		65-74		75+		ALL	
	obs	rel	obs	rel	obs	rel	obs	rel	obs	rel	obs	rel
Men												
1 year	89	89	91	91	90	91	87	90	74	80	87	89
3 years	75	76	76	77	75	78	70	77	49	63	70	75
5 years	70	71	70	72	67	72	59	70	35	57	60	70
95% CI	(60-78)	(61-79)	(66-74)	(68-76)	(64-69)	(69-75)	(56-61)	(66-73)	(31-39)	(51-63)	(59-62)	(68-71)
Women												
1 year	100	100	91	92	94	94	89	90	69	73	86	88
3 years	87	87	86	86	74	76	70	73	47	57	68	73
5 years	66	66	86	87	65	67	63	68	41	60	61	69
95% CI	(40-84)	(40-85)	(71-94)	(72-95)	(55-74)	(57-77)	(52-72)	(57-78)	(31-53)	(45-76)	(55-66)	(62-75)
Total												
1 year	91	91	91	91	90	91	88	90	73	79	87	89
3 years	77	77	77	78	75	78	70	76	49	63	69	75
5 years	69	70	71	73	67	72	59	69	36	57	60	70
95% CI	(60-77)	(61-78)	(67-74)	(69-76)	(64-69)	(69-74)	(56-62)	(66-73)	(32-40)	(51-63)	(59-62)	(68-71)

Five Years Age-adjusted Relative Survival of 1986-89 and 1990-94 incident cases

Men and Women

