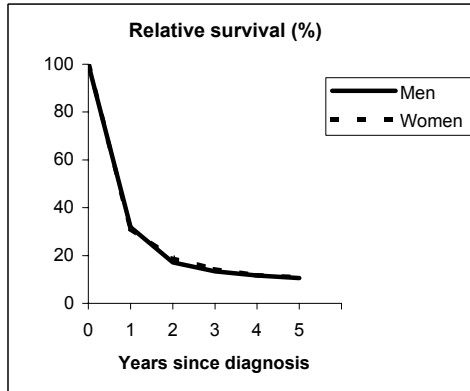


# LUNG (ICD-IX 162)

## TORINO - Incident cases 1990-'94

AGE CLASSES	Men	Women
15-44	44	18
45-54	235	47
55-64	725	102
65-74	758	167
75+	440	170
<b>ALL</b>	<b>2,202</b>	<b>504</b>

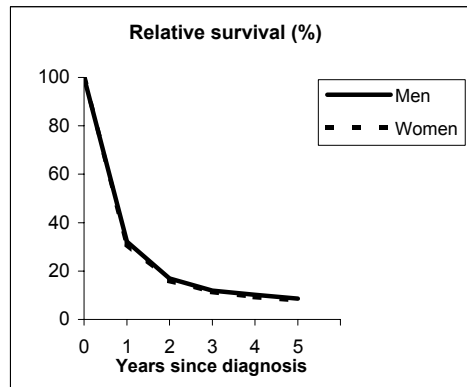


**Observed and Relative survival (%)**  
(in parenthesis 95% confidence limits of 5 years survival)

	Men		Women		ALL	
	<i>obs</i>	<i>rel</i>	<i>obs</i>	<i>rel</i>	<i>obs</i>	<i>rel</i>
1 year	31	32	31	31	31	32
3 years	12	13	13	14	12	14
<b>5 years</b>	<b>9</b>	<b>11</b>	<b>9</b>	<b>11</b>	<b>9</b>	<b>11</b>
95% CI	(8-10)	(9-12)	(7-12)	(8-14)	(8-10)	(9-12)

## GENOVA - Incident cases 1990-'94

AGE CLASSES	Men	Women
15-44	32	16
45-54	165	40
55-64	555	90
65-74	796	152
75+	558	154
<b>ALL</b>	<b>2,106</b>	<b>452</b>



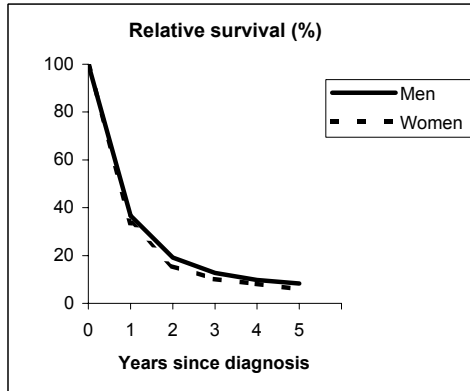
**Observed and Relative survival (%)**  
(in parenthesis 95% confidence limits of 5 years survival)

	Men		Women		ALL	
	<i>obs</i>	<i>rel</i>	<i>obs</i>	<i>rel</i>	<i>obs</i>	<i>rel</i>
1 year	31	32	30	31	31	32
3 years	10	12	10	11	10	12
<b>5 years</b>	<b>7</b>	<b>9</b>	<b>7</b>	<b>8</b>	<b>7</b>	<b>8</b>
95% CI	(6-8)	(7-10)	(5-9)	(6-11)	(6-8)	(7-10)

# LUNG (ICD-IX 162)

## VARESE - Incident cases 1990-'94

AGE CLASSES	Men	Women
15-44	34	15
45-54	179	26
55-64	634	67
65-74	699	91
75+	378	125
<b>ALL</b>	<b>1,924</b>	<b>324</b>

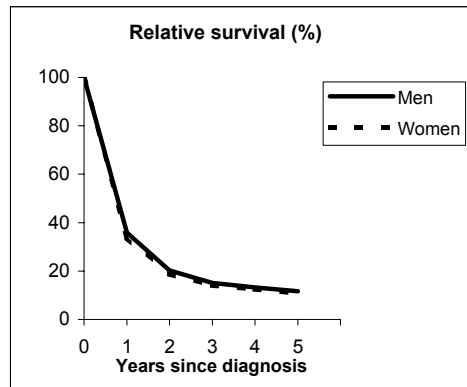


**Observed and Relative survival (%)**  
(in parenthesis 95% confidence limits of 5 years survival)

	Men		Women		ALL	
	<i>obs</i>	<i>rel</i>	<i>obs</i>	<i>rel</i>	<i>obs</i>	<i>rel</i>
1 year	35	37	33	33	35	36
3 years	11	13	9	10	11	12
<b>5 years</b>	<b>7</b>	<b>8</b>	<b>5</b>	<b>6</b>	<b>7</b>	<b>8</b>
95% CI	(6-8)	(7-10)	(3-8)	(4-9)	(6-8)	(7-9)

## VENETO - Incident cases 1990-'94

AGE CLASSES	Men	Women
15-44	92	32
45-54	470	100
55-64	1,612	271
65-74	2,294	434
75+	1,183	385
<b>ALL</b>	<b>5,651</b>	<b>1,222</b>



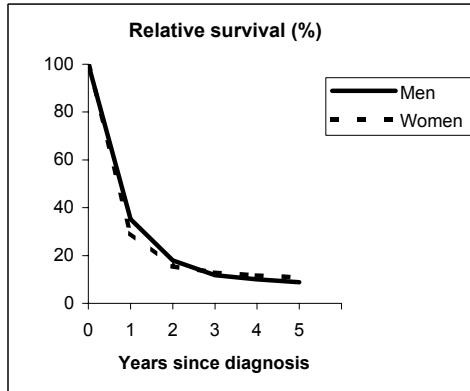
**Observed and Relative survival (%)**  
(in parenthesis 95% confidence limits of 5 years survival)

	Men		Women		ALL	
	<i>obs</i>	<i>rel</i>	<i>obs</i>	<i>rel</i>	<i>obs</i>	<i>rel</i>
1 year	35	36	33	34	34	36
3 years	13	15	13	14	13	15
<b>5 years</b>	<b>10</b>	<b>12</b>	<b>9</b>	<b>11</b>	<b>10</b>	<b>12</b>
95% CI	(9-10)	(11-13)	(8-11)	(9-13)	(9-10)	(11-12)

# LUNG (ICD-IX 162)

## PARMA - Incident cases 1990-'94

AGE CLASSES	Men	Women
15-44	13	6
45-54	82	21
55-64	325	51
65-74	429	102
75+	304	93
<b>ALL</b>	<b>1,153</b>	<b>273</b>

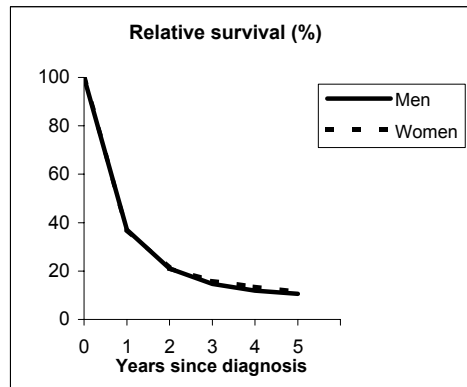


**Observed and Relative survival (%)**  
(in parenthesis 95% confidence limits of 5 years survival)

	Men		Women		ALL	
	<i>obs</i>	<i>rel</i>	<i>obs</i>	<i>rel</i>	<i>obs</i>	<i>rel</i>
1 year	34	35	29	29	33	34
3 years	10	12	12	13	11	12
<b>5 years</b>	<b>7</b>	<b>9</b>	<b>9</b>	<b>11</b>	<b>8</b>	<b>9</b>
95% CI	(6-9)	(7-11)	(6-13)	(7-16)	(6-9)	(8-11)

## MODENA - Incident cases 1990-'94

AGE CLASSES	Men	Women
15-44	22	10
45-54	123	20
55-64	514	81
65-74	707	120
75+	421	97
<b>ALL</b>	<b>1,787</b>	<b>328</b>



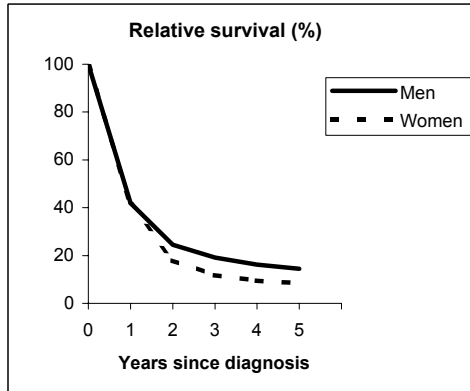
**Observed and Relative survival (%)**  
(in parenthesis 95% confidence limits of 5 years survival)

	Men		Women		ALL	
	<i>obs</i>	<i>rel</i>	<i>obs</i>	<i>rel</i>	<i>obs</i>	<i>rel</i>
1 year	36	37	37	37	36	37
3 years	13	15	15	16	13	15
<b>5 years</b>	<b>9</b>	<b>11</b>	<b>10</b>	<b>11</b>	<b>9</b>	<b>11</b>
95% CI	(8-10)	(9-12)	(7-14)	(8-16)	(8-10)	(9-12)

# LUNG (ICD-IX 162)

## FERRARA - Incident cases 1990-'94

AGE CLASSES	Men	Women
15-44	14	6
45-54	117	21
55-64	375	64
65-74	526	107
75+	311	83
<b>ALL</b>	<b>1,343</b>	<b>281</b>

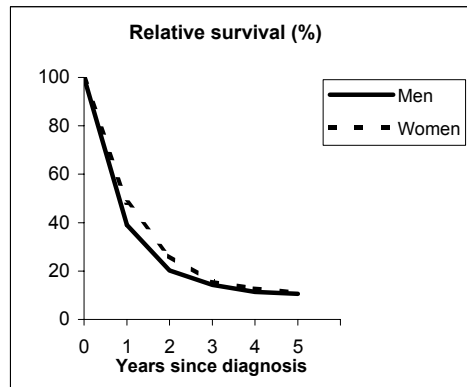


**Observed and Relative survival (%)**  
(in parenthesis 95% confidence limits of 5 years survival)

	Men		Women		ALL	
	<i>obs</i>	<i>rel</i>	<i>obs</i>	<i>rel</i>	<i>obs</i>	<i>rel</i>
1 year	40	42	40	41	40	42
3 years	17	19	11	12	16	18
<b>5 years</b>	<b>12</b>	<b>14</b>	<b>7</b>	<b>8</b>	<b>11</b>	<b>13</b>
95% CI	(10-14)	(12-17)	(5-11)	(5-13)	(10-13)	(12-15)

## ROMAGNA - Incident cases 1990-'94

AGE CLASSES	Men	Women
15-44	14	8
45-54	74	19
55-64	354	53
65-74	520	76
75+	357	86
<b>ALL</b>	<b>1,319</b>	<b>242</b>



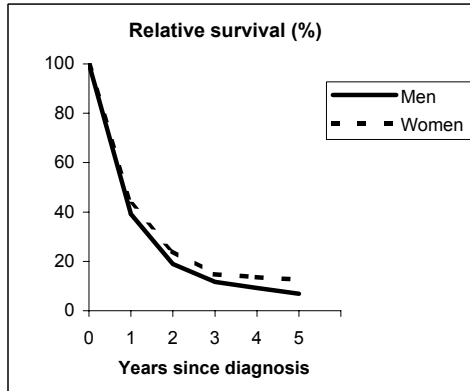
**Observed and Relative survival (%)**  
(in parenthesis 95% confidence limits of 5 years survival)

	Men		Women		ALL	
	<i>obs</i>	<i>rel</i>	<i>obs</i>	<i>rel</i>	<i>obs</i>	<i>rel</i>
1 year	38	39	47	48	39	40
3 years	13	14	14	15	13	14
<b>5 years</b>	<b>9</b>	<b>11</b>	<b>10</b>	<b>11</b>	<b>9</b>	<b>11</b>
95% CI	(8-11)	(9-13)	(7-14)	(7-16)	(8-11)	(9-13)

# LUNG (ICD-IX 162)

## MACERATA - Incident cases 1991-'94

AGE CLASSES	Men	Women
15-44	10	2
45-54	35	8
55-64	127	17
65-74	220	26
75+	111	21
<b>ALL</b>	<b>503</b>	<b>74</b>

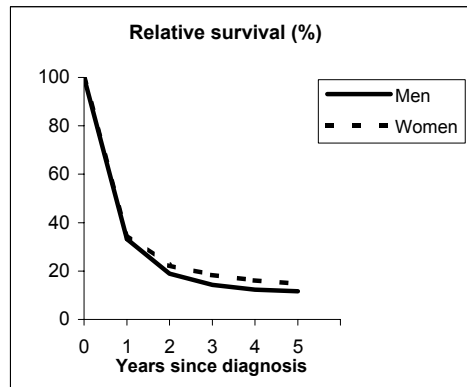


**Observed and Relative survival (%)**  
(in parenthesis 95% confidence limits of 5 years survival)

	Men		Women		ALL	
	<i>obs</i>	<i>rel</i>	<i>obs</i>	<i>rel</i>	<i>obs</i>	<i>rel</i>
1 year	38	39	42	43	38	40
3 years	11	12	14	15	11	12
<b>5 years</b>	<b>6</b>	<b>7</b>	<b>11</b>	<b>13</b>	<b>6</b>	<b>8</b>
95% CI	(4-8)	(5-10)	(6-20)	(6-23)	(5-9)	(6-10)

## FIRENZE-PRATO - Incident cases 1990-'94

AGE CLASSES	Men	Women
15-44	58	24
45-54	297	57
55-64	818	122
65-74	1,204	215
75+	755	241
<b>ALL</b>	<b>3,132</b>	<b>659</b>



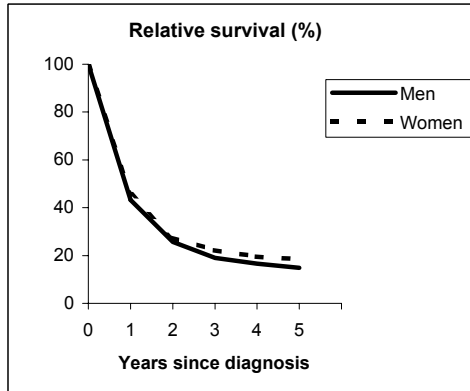
**Observed and Relative survival (%)**  
(in parenthesis 95% confidence limits of 5 years survival)

	Men		Women		ALL	
	<i>obs</i>	<i>rel</i>	<i>obs</i>	<i>rel</i>	<i>obs</i>	<i>rel</i>
1 year	32	33	34	35	32	34
3 years	13	14	17	18	14	15
<b>5 years</b>	<b>10</b>	<b>12</b>	<b>13</b>	<b>15</b>	<b>10</b>	<b>12</b>
95% CI	(9-11)	(10-13)	(10-15)	(12-18)	(9-11)	(11-13)

# LUNG (ICD-IX 162)

## UMBRIA - Incident cases 1994-'96

AGE CLASSES	Men	Women
15-44	18	10
45-54	82	28
55-64	274	50
65-74	520	90
75+	274	77
<b>ALL</b>	<b>1,168</b>	<b>255</b>

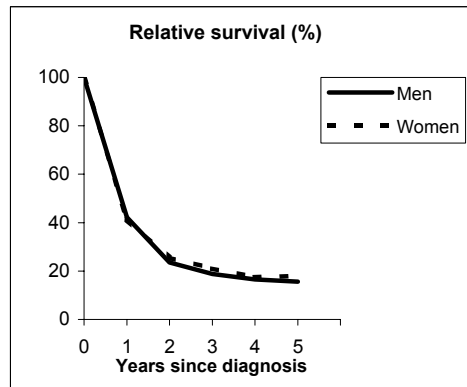


**Observed and Relative survival (%)**  
(in parenthesis 95% confidence limits of 5 years survival)

	Men		Women		ALL	
	<i>obs</i>	<i>rel</i>	<i>obs</i>	<i>rel</i>	<i>obs</i>	<i>rel</i>
1 year	42	43	44	46	42	44
3 years	17	19	20	22	18	20
<b>5 years</b>	<b>12</b>	<b>15</b>	<b>16</b>	<b>18</b>	<b>13</b>	<b>16</b>
95% CI	(10-14)	(13-17)	(12-21)	(14-25)	(11-15)	(13-18)

## LATINA - Incident cases 1990-'94

AGE CLASSES	Men	Women
15-44	20	3
45-54	62	14
55-64	230	30
65-74	277	36
75+	130	23
<b>ALL</b>	<b>719</b>	<b>106</b>



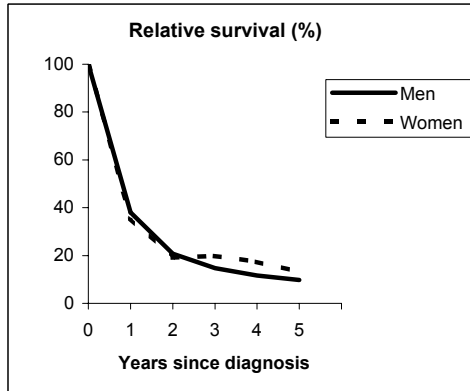
**Observed and Relative survival (%)**  
(in parenthesis 95% confidence limits of 5 years survival)

	Men		Women		ALL	
	<i>obs</i>	<i>rel</i>	<i>obs</i>	<i>rel</i>	<i>obs</i>	<i>rel</i>
1 year	41	42	41	41	41	42
3 years	17	19	20	21	17	19
<b>5 years</b>	<b>13</b>	<b>16</b>	<b>16</b>	<b>18</b>	<b>13</b>	<b>16</b>
95% CI	(11-16)	(13-19)	(10-24)	(11-27)	(11-16)	(13-19)

# LUNG (ICD-IX 162)

## SASSARI - Incident cases 1992-'94

AGE CLASSES	Men	Women
15-44	10	0
45-54	63	9
55-64	136	17
65-74	196	20
75+	114	26
<b>ALL</b>	<b>519</b>	<b>72</b>

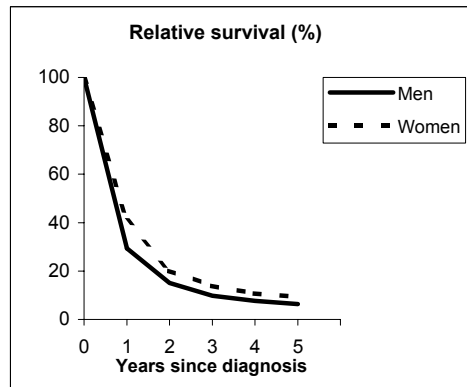


**Observed and Relative survival (%)**  
(in parenthesis 95% confidence limits of 5 years survival)

	Men		Women		ALL	
	obs	rel	obs	rel	obs	rel
1 year	37	38	35	36	36	38
3 years	13	15	18	20	14	15
<b>5 years</b>	<b>8</b>	<b>10</b>	<b>11</b>	<b>13</b>	<b>8</b>	<b>10</b>
95% CI	(6-11)	(7-13)	(6-20)	(7-24)	(6-11)	(8-13)

## RAGUSA - Incident cases 1990-'94

AGE CLASSES	Men	Women
15-44	10	5
45-54	40	7
55-64	115	13
65-74	160	17
75+	93	21
<b>ALL</b>	<b>418</b>	<b>63</b>



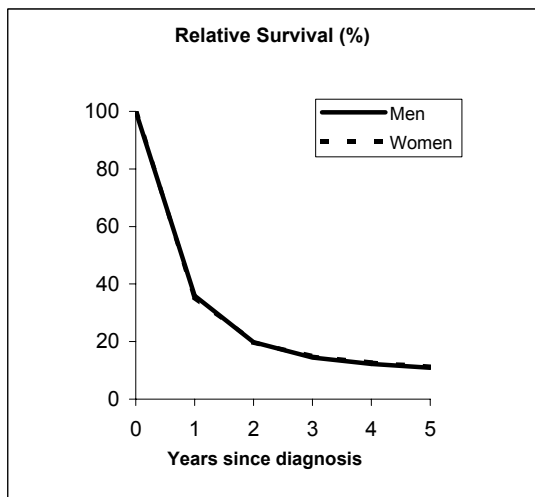
**Observed and Relative survival (%)**  
(in parenthesis 95% confidence limits of 5 years survival)

	Men		Women		ALL	
	obs	rel	obs	rel	obs	rel
1 year	28	29	40	41	30	31
3 years	9	10	13	14	9	10
<b>5 years</b>	<b>5</b>	<b>6</b>	<b>8</b>	<b>9</b>	<b>6</b>	<b>7</b>
95% CI	(4-8)	(4-9)	(3-17)	(4-20)	(4-8)	(5-10)

# LUNG (ICD-IX 162)

## Pool of Italian Registries

REGISTRY	Number of cases		
	Men	Women	Total
Torino	2,202	504	2,706
Genova	2,106	452	2,558
Varese	1,924	324	2,248
Veneto	5,651	1,222	6,873
Parma	1,153	273	1,426
Modena	1,787	328	2,115
Ferrara	1,343	281	1,624
Romagna	1,319	242	1,561
Macerata	503	74	577
Firenze-Prato	3,132	659	3,791
Umbria	1,168	255	1,423
Latina	719	106	825
Sassari	519	72	591
Ragusa	418	63	481
<b>Italy</b>	<b>23,944</b>	<b>4,855</b>	<b>28,799</b>



### Observed and relative survival (%) by sex and age classes

	15-44		45-54		55-64		65-74		75+		ALL	
	obs	rel	obs	rel	obs	rel	obs	rel	obs	rel	obs	rel
<b>Men</b>												
1 year	47	47	42	43	41	42	35	36	22	24	35	36
3 years	23	23	19	20	17	17	13	14	5	7	13	14
<b>5 years</b>	<b>19</b>	<b>20</b>	<b>15</b>	<b>16</b>	<b>12</b>	<b>13</b>	<b>9</b>	<b>10</b>	<b>3</b>	<b>4</b>	<b>9</b>	<b>11</b>
95% CI	(16-24)	(16-24)	(14-17)	(14-17)	(11-13)	(12-14)	(8-9)	(10-11)	(2-3)	(4-5)	(9-9)	(10-11)
<b>Women</b>												
1 year	54	54	46	46	43	43	36	36	23	25	35	36
3 years	31	31	20	20	19	19	14	14	7	9	14	15
<b>5 years</b>	<b>29</b>	<b>29</b>	<b>16</b>	<b>16</b>	<b>14</b>	<b>15</b>	<b>9</b>	<b>10</b>	<b>4</b>	<b>5</b>	<b>10</b>	<b>11</b>
95% CI	(22-36)	(22-37)	(12-19)	(13-20)	(12-16)	(12-17)	(8-11)	(9-12)	(3-5)	(4-7)	(9-11)	(10-12)
<b>Total</b>												
1 year	49	49	43	43	41	42	35	36	23	24	35	36
3 years	25	25	19	20	17	18	13	14	6	7	13	14
<b>5 years</b>	<b>22</b>	<b>22</b>	<b>15</b>	<b>16</b>	<b>12</b>	<b>13</b>	<b>9</b>	<b>10</b>	<b>3</b>	<b>4</b>	<b>9</b>	<b>11</b>
95% CI	(19-26)	(19-26)	(14-17)	(14-17)	(12-13)	(12-14)	(8-9)	(10-11)	(2-3)	(4-5)	(9-9)	(11-11)

### Five Years Age-adjusted Relative Survival of 1986-89 and 1990-94 incident cases

#### Men and Women

