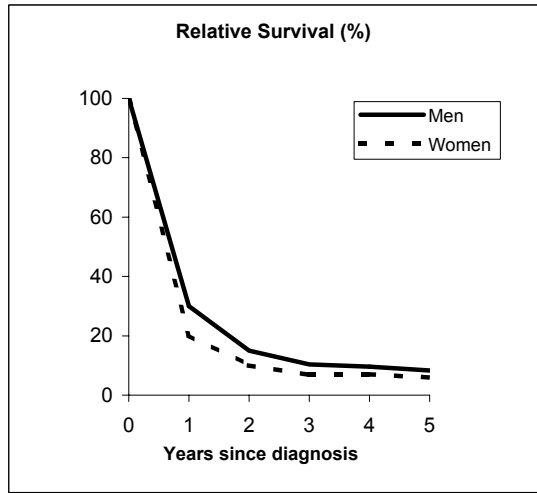


# LARGE CELL CARCINOMA OF THE LUNG (ICD-IX 162)

## Pool of Italian Registries

REGISTRY	Number of cases		
	Men	Women	Total
Torino	130	17	147
Genova	62	22	84
Varese	87	13	100
Veneto	276	79	355
Parma	35	5	40
Modena	50	9	59
Ferrara	27	4	31
Romagna	49	7	56
Macerata	24	2	26
Firenze-Prato	59	15	74
Umbria	58	9	67
Latina	29	3	32
Sassari	9	2	11
Ragusa	16	1	17
<b>Italy</b>	<b>911</b>	<b>188</b>	<b>1,099</b>



### Observed and relative survival (%) by sex and age classes

	15-44		45-54		55-64		65-74		75+		ALL	
	obs	rel	obs	rel	obs	rel	obs	rel	obs	rel	obs	rel
<b>Men</b>												
1 year	43	43	20	20	36	36	28	29	12	13	29	30
3 years	19	19	13	13	13	13	8	9	2	3	10	10
<b>5 years</b>	<b>10</b>	<b>10</b>	<b>11</b>	<b>11</b>	<b>10</b>	<b>11</b>	<b>5</b>	<b>6</b>	<b>2</b>	<b>2</b>	<b>7</b>	<b>8</b>
95% CI	(3-29)	(3-29)	(0-0)	(6-18)	(7-14)	(8-16)	(3-8)	(4-9)	(0-6)	(1-9)	(6-9)	(7-10)
<b>Women</b>												
1 year	14	14	30	30	28	28	23	23	2	2	20	20
3 years	14	14	4	4	11	11	6	7	2	3	6	7
<b>5 years</b>	<b>14</b>	<b>14</b>	<b>0</b>	<b>0</b>	<b>9</b>	<b>9</b>	<b>5</b>	<b>5</b>	<b>2</b>	<b>3</b>	<b>5</b>	<b>6</b>
95% CI	(3-51)	(3-52)	-	-	(3-20)	(3-21)	(2-13)	(4-9)	(0-12)	(1-17)	(3-10)	(3-11)
<b>Total</b>												
1 year	36	36	31	31	35	35	27	28	9	10	28	28
3 years	18	18	11	11	12	13	8	9	2	3	9	10
<b>5 years</b>	<b>11</b>	<b>11</b>	<b>9</b>	<b>10</b>	<b>10</b>	<b>11</b>	<b>5</b>	<b>6</b>	<b>2</b>	<b>3</b>	<b>7</b>	<b>8</b>
95% CI	(4-27)	(4-27)	(0-0)	(0-0)	(7-14)	(8-15)	(3-8)	(4-9)	(1-5)	(1-8)	(5-9)	(6-10)

### Five Years Age-adjusted Relative Survival

#### Men and Women

