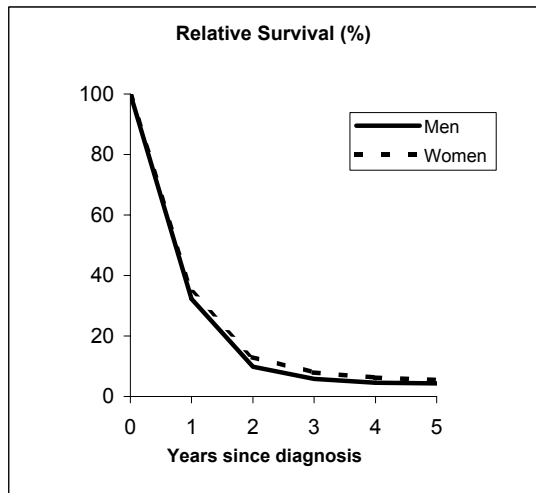


SMALL CELL CARCINOMA OF THE LUNG (ICD-IX 162)

Pool of Italian Registries

REGISTRY	Number of cases		
	Men	Women	Total
Torino	236	52	288
Genova	214	40	254
Varese	288	43	331
Veneto	503	130	633
Parma	157	28	185
Modena	210	32	242
Ferrara	159	35	194
Romagna	195	25	220
Macerata	60	6	66
Firenze-Prato	272	46	318
Umbria	160	32	192
Latina	120	16	136
Sassari	42	7	49
Ragusa	20	1	21
Italy	2,636	493	3,129



Observed and relative survival (%) by sex and age classes

	15-44		45-54		55-64		65-74		75+		ALL	
	obs	rel	obs	rel	obs	rel	obs	rel	obs	rel	obs	rel
Men												
1 year	64	64	40	40	38	38	29	29	14	15	31	32
3 years	21	21	5	5	7	7	5	6	2	2	5	6
5 years	18	18	3	3	5	5	3	4	1	2	4	4
95% CI	(9-33)	(9-33)	(1-5)	(1-6)	(3-6)	(4-7)	(3-5)	(3-6)	(1-3)	(1-5)	(3-5)	(4-5)
Women												
1 year	60	60	44	45	45	45	31	32	11	12	34	34
3 years	30	30	16	16	9	9	7	7	0	0	8	8
5 years	30	30	11	11	7	7	3	3	0	0	5	5
95% CI	(11-60)	(11-61)	(5-23)	(5-24)	(4-12)	(4-12)	(1-7)	(2-7)	-	-	(3-7)	(4-8)
Total												
1 year	63	63	40	41	39	39	29	30	13	14	32	33
3 years	22	23	6	6	7	7	5	6	1	2	6	6
5 years	20	21	4	4	5	5	18	19	1	2	4	5
95% CI	(11-34)	(12-34)	(2-7)	(2-7)	(4-6)	(4-7)	(3-5)	(3-5)	(0-3)	(1-4)	(3-5)	(4-5)

Five Years Age-adjusted Relative Survival

Men and Women

