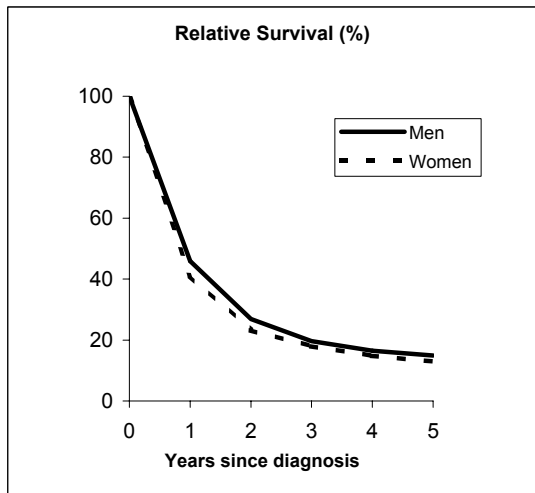


# SQUAMOUS CELL CARCINOMA OF THE LUNG (ICD-IX 162)

## Pool of Italian Registries

REGISTRY	Number of cases		
	Men	Women	Total
Torino	662	67	729
Genova	623	62	685
Varese	654	43	697
Veneto	1,972	186	2,158
Parma	448	45	493
Modena	588	55	643
Ferrara	513	55	568
Romagna	540	41	581
Macerata	152	2	154
Firenze-Prato	871	73	944
Umbria	357	36	393
Latina	188	12	200
Sassari	132	6	138
Ragusa	67	3	70
<b>Italy</b>	<b>7,767</b>	<b>686</b>	<b>8,453</b>



### Observed and relative survival (%) by sex and age classes

	15-44		45-54		55-64		65-74		75+		ALL	
	obs	rel	obs	rel	obs	rel	obs	rel	obs	rel	obs	rel
<b>Men</b>												
1 year	53	54	48	49	50	51	45	46	31	33	45	46
3 years	30	30	24	25	22	23	18	20	7	9	18	20
<b>5 years</b>	<b>26</b>	<b>26</b>	<b>19</b>	<b>20</b>	<b>16</b>	<b>17</b>	<b>12</b>	<b>15</b>	<b>3</b>	<b>5</b>	<b>13</b>	<b>15</b>
95% CI	(17-37)	(18-38)	(16-23)	(17-23)	(15-18)	(16-19)	(11-14)	(13-16)	(3-5)	(4-7)	(12-13)	(14-16)
<b>Women</b>												
1 year	39	39	56	56	47	47	42	42	27	28	40	41
3 years	11	11	26	26	23	23	17	18	9	10	17	18
<b>5 years</b>	<b>6</b>	<b>6</b>	<b>22</b>	<b>22</b>	<b>17</b>	<b>17</b>	<b>12</b>	<b>13</b>	<b>4</b>	<b>5</b>	<b>12</b>	<b>13</b>
95% CI	(1-26)	(1-26)	(13-35)	(13-35)	(12-23)	(12-24)	(8-16)	(9-17)	(2-8)	(2-10)	(9-14)	(10-16)
<b>Total</b>												
1 year	51	51	49	49	50	51	45	46	30	33	44	46
3 years	26	27	25	25	22	23	18	20	7	9	18	19
<b>5 years</b>	<b>22</b>	<b>22</b>	<b>20</b>	<b>20</b>	<b>16</b>	<b>17</b>	<b>45</b>	<b>47</b>	<b>3</b>	<b>5</b>	<b>13</b>	<b>15</b>
95% CI	(15-32)	(15-32)	(17-23)	(17-23)	(15-17)	(16-19)	(11-13)	(13-16)	(3-5)	(4-7)	(12-13)	(14-16)

### Five Years Age-adjusted Relative Survival

#### Men and Women

