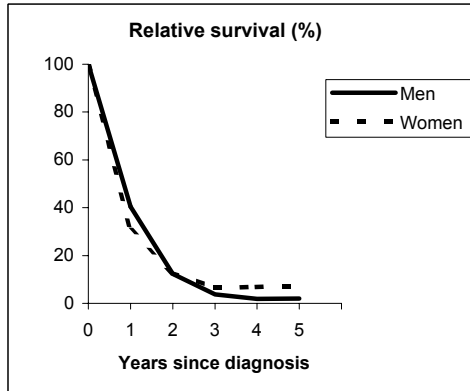


PLEURA (ICD-IX 163)

TORINO - Incident cases 1990-'94

AGE CLASSES	Men	Women
15-44	0	1
45-54	5	1
55-64	18	12
65-74	20	5
75+	19	15
ALL	62	34

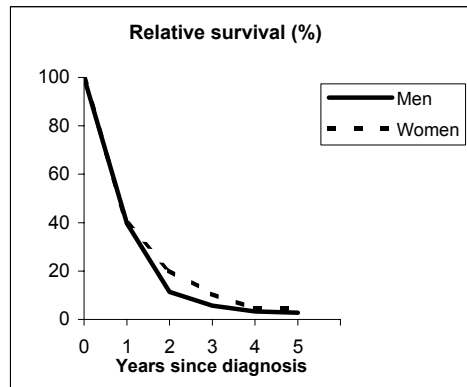


Observed and Relative survival (%)
(in parenthesis 95% confidence limits of 5 years survival)

	Men		Women		ALL	
	<i>obs</i>	<i>rel</i>	<i>obs</i>	<i>rel</i>	<i>obs</i>	<i>rel</i>
1 year	39	40	29	31	35	37
3 years	3	4	6	7	4	5
5 years	2	2	6	7	3	4
95% CI	(0-9)	(0-11)	(2-19)	(2-23)	(1-9)	(1-11)

GENOVA - Incident cases 1990-'94

AGE CLASSES	Men	Women
15-44	2	2
45-54	21	6
55-64	45	7
65-74	56	16
75+	57	21
ALL	181	52



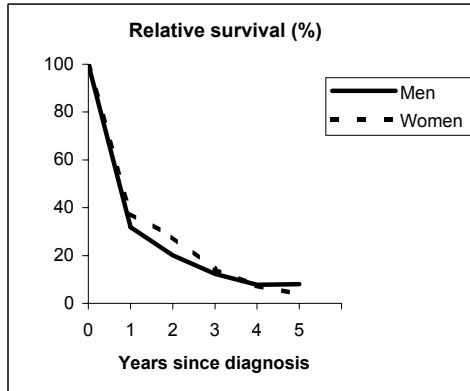
Observed and Relative survival (%)
(in parenthesis 95% confidence limits of 5 years survival)

	Men		Women		ALL	
	<i>obs</i>	<i>rel</i>	<i>obs</i>	<i>rel</i>	<i>obs</i>	<i>rel</i>
1 year	38	40	38	40	38	40
3 years	5	6	10	11	6	7
5 years	2	3	4	5	3	3
95% CI	(1-6)	(1-7)	(1-13)	(1-15)	(1-6)	(1-7)

PLEURA (ICD-IX 163)

VENETO- Incident cases 1990-'94

AGE CLASSES	Men	Women
15-44	2	2
45-54	11	2
55-64	24	11
65-74	30	7
75+	24	8
ALL	91	30



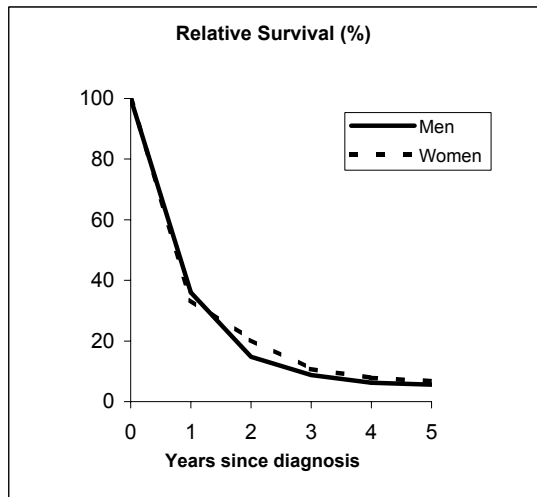
Observed and Relative survival (%)
(in parenthesis 95% confidence limits of 5 years survival)

	<i>Men</i>		<i>Women</i>		ALL	
	<i>obs</i>	<i>rel</i>	<i>obs</i>	<i>rel</i>	<i>obs</i>	<i>rel</i>
1 year	31	32	37	37	32	33
3 years	11	12	13	14	12	13
5 years	7	8	3	4	6	7
95% CI	(3-14)	(4-17)	(1-17)	(1-19)	(3-11)	(3-14)

PLEURA (ICD-IX 163)

Pool of Italian Registries

REGISTRY	Number of cases		
	Men	Women	Total
Torino	62	34	96
Genova	181	52	233
Varese	38	20	58
Veneto	91	30	121
Parma	20	9	29
Modena	21	12	33
Ferrara	23	6	29
Romagna	34	4	38
Macerata	8	3	11
Firenze-Prato	29	19	48
Umbria	13	5	18
Latina	5	2	7
Sassari	3	3	6
Ragusa	7	3	10
Italy	538	202	740



Observed and relative survival (%) by sex and age classes

	15-44		45-54		55-64		65-74		75+		ALL	
	obs	rel	obs	rel	obs	rel	obs	rel	obs	rel	obs	rel
Men												
1 year	71	72	47	47	39	39	31	32	28	30	35	36
3 years	57	57	16	16	8	9	5	6	4	5	8	9
5 years	0	0	10	10	7	7	3	4	1	2	5	6
95% CI	-	-	(5-19)	(5-20)	(4-12)	(4-13)	(1-7)	(2-8)	(0-5)	(1-8)	(3-7)	(4-8)
Women												
1 year	63	63	67	67	35	35	33	33	19	20	33	34
3 years	50	50	29	29	14	14	5	6	1	2	10	11
5 years	38	38	18	18	9	9	2	2	0	0	6	7
95% CI	(14-69)	(14-70)	(7-40)	(7-40)	(3-21)	(3-22)	(0-10)	(0-11)	-	-	(3-10)	(4-12)
Total												
1 year	67	67	52	52	38	38	31	32	25	27	34	35
3 years	53	54	19	19	10	10	5	6	3	4	8	9
5 years	27	27	12	12	7	8	3	3	1	1	5	6
95% CI	(11-52)	(11-52)	(7-20)	(7-21)	(4-12)	(5-13)	(1-6)	(1-7)	(0-3)	(0-5)	(4-7)	(4-8)