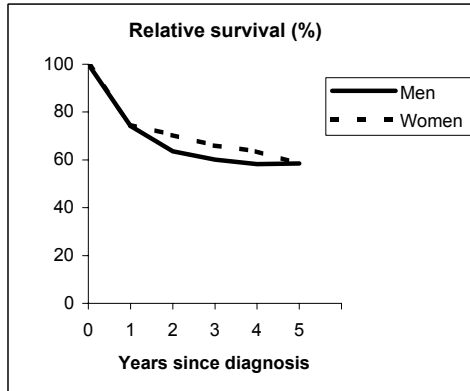


SOFT TISSUES (ICD-IX 171)

GENOVA - Incident cases 1990-'94

AGE CLASSES	Men	Women
15-44	7	6
45-54	7	5
55-64	17	16
65-74	14	14
75+	12	11
ALL	57	52

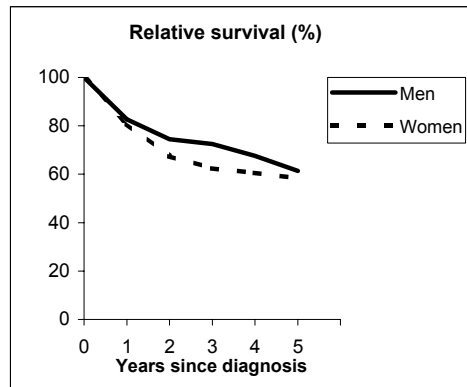


Observed and Relative survival (%)
(in parenthesis 95% confidence limits of 5 years survival)

	Men		Women		ALL	
	<i>obs</i>	<i>rel</i>	<i>obs</i>	<i>rel</i>	<i>obs</i>	<i>rel</i>
1 year	72	74	73	75	72	74
3 years	54	60	62	66	58	63
5 years	49	58	52	58	50	58
95% CI	(37-62)	(44-73)	(38-65)	(43-73)	(41-60)	(48-69)

VENETO - Incident cases 1990-'94

AGE CLASSES	Men	Women
15-44	38	24
45-54	25	17
55-64	39	28
65-74	29	29
75+	29	33
ALL	160	131



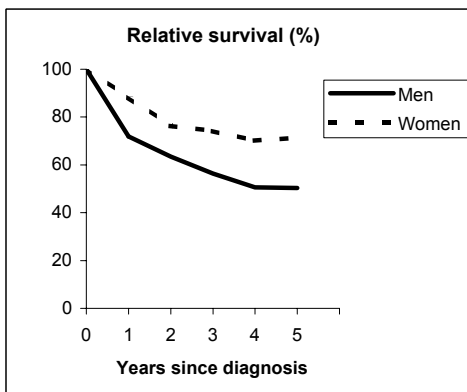
Observed and Relative survival (%)
(in parenthesis 95% confidence limits of 5 years survival)

	Men		Women		ALL	
	<i>obs</i>	<i>rel</i>	<i>obs</i>	<i>rel</i>	<i>obs</i>	<i>rel</i>
1 year	81	83	79	81	80	82
3 years	67	72	59	62	63	68
5 years	53	61	52	58	53	60
95% CI	(45-61)	(52-70)	(44-61)	(49-68)	(47-59)	(53-66)

SOFT TISSUES (ICD-IX 171)

FIRENZE-PRATO - Incident cases 1990-'94

AGE CLASSES	Men	Women
15-44	12	24
45-54	9	7
55-64	11	10
65-74	15	11
75+	12	10
ALL	59	62

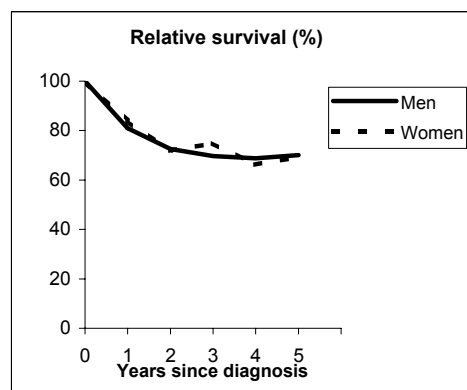


Observed and Relative survival (%)
(in parenthesis 95% confidence limits of 5 years survival)

	Men		Women		ALL	
	obs	rel	obs	rel	obs	rel
1 year	69	72	87	88	79	80
3 years	51	56	71	74	61	66
5 years	42	50	66	71	54	62
95% CI	(30-55)	(36-65)	(54-77)	(58-83)	(46-63)	(52-71)

SASSARI - Incident cases 1992-'94

AGE CLASSES	Men	Women
15-44	8	5
45-54	5	1
55-64	9	3
65-74	10	3
75+	21	9
ALL	53	21



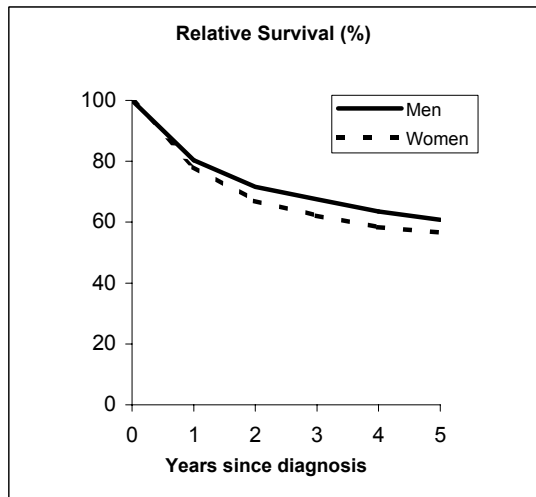
Observed and Relative survival (%)
(in parenthesis 95% confidence limits of 5 years survival)

	Men		Women		ALL	
	obs	rel	obs	rel	obs	rel
1 year	77	81	81	84	78	82
3 years	60	70	67	75	62	71
5 years	55	70	56	69	55	70
95% CI	(41-67)	(53-86)	(36-75)	(44-92)	(44-66)	(55-84)

SOFT TISSUES (ICD-IX 171)

Pool of Italian Registries

REGISTRY	Number of cases		
	Men	Women	Total
Torino	42	45	87
Genova	57	52	109
Varese	37	29	66
Veneto	160	131	291
Parma	25	31	56
Modena	45	43	88
Ferrara	26	21	47
Romagna	38	27	65
Macerata	17	13	30
Firenze-Prato	59	62	121
Umbria	30	30	60
Latina	22	22	44
Sassari	53	21	74
Ragusa	10	14	24
Italy	621	541	1,162



Observed and relative survival (%) by sex and age classes

	15-44		45-54		55-64		65-74		75+		ALL	
	obs	rel	obs	rel	obs	rel	obs	rel	obs	rel	obs	rel
Men												
1 year	88	88	85	85	80	81	81	83	59	65	78	80
3 years	78	78	74	76	61	64	57	63	42	56	62	67
5 years	65	66	69	71	55	59	47	56	28	49	52	61
95% CI	(57-73)	(57-74)	(60-78)	(61-80)	(46-63)	(50-68)	(39-56)	(46-66)	(21-37)	(36-63)	(48-56)	(56-65)
Women												
1 year	88	88	81	82	81	81	76	77	61	66	77	78
3 years	70	70	64	65	59	60	63	66	40	50	58	62
5 years	62	63	61	62	52	53	54	59	31	46	50	57
95% CI	(53-71)	(54-71)	(48-72)	(49-73)	(42-61)	(44-63)	(45-62)	(49-68)	(24-39)	(35-58)	(46-55)	(52-61)
Total												
1 year	88	88	83	84	80	81	78	80	60	65	77	79
3 years	74	74	71	72	60	62	60	64	41	53	60	65
5 years	64	64	66	68	54	57	50	57	30	47	51	59
95% CI	(58-70)	(58-70)	(58-73)	(60-75)	(47-60)	(50-63)	(44-56)	(50-64)	(24-35)	(39-56)	(49-54)	(55-62)

Five Years Age-adjusted Relative Survival of 1986-89 and 1990-94 incident cases

Men and Women

