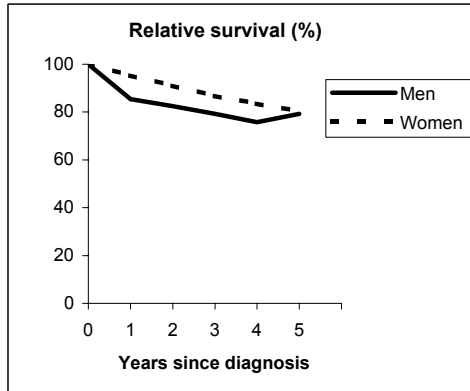


BREAST (ICD-IX 174-5)

TORINO - Incident cases 1990-'94

AGE CLASSES	Men	Women
15-44	2	331
45-54	2	675
55-64	1	818
65-74	7	703
75+	5	482
ALL	17	3,009

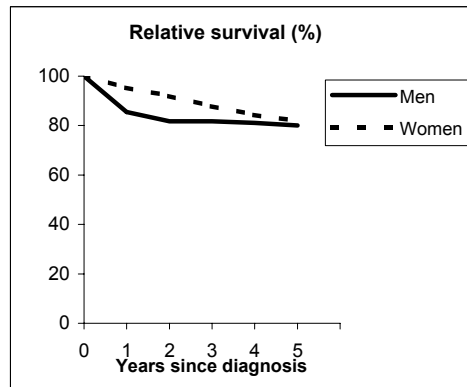


Observed and Relative survival (%)
(in parenthesis 95% confidence limits of 5 years survival)

	Men		Women		ALL	
	obs	rel	obs	rel	obs	rel
1 year	82	85	94	95	94	95
3 years	71	79	83	87	83	87
5 years	65	79	74	80	74	80
95% CI	(41-83)	(51-101)	(72-75)	(79-82)	(72-75)	(79-82)

GENOVA - Incident cases 1990-'94

AGE CLASSES	Men	Women
15-44	0	253
45-54	4	483
55-64	8	645
65-74	4	615
75+	9	577
ALL	25	2,573



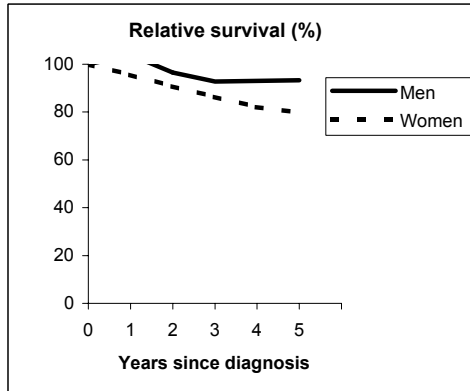
Observed and Relative survival (%)
(in parenthesis 95% confidence limits of 5 years survival)

	Men		Women		ALL	
	obs	rel	obs	rel	obs	rel
1 year	80	85	93	95	93	95
3 years	68	82	82	88	82	88
5 years	60	80	73	82	73	82
95% CI	(41-77)	(54-102)	(71-75)	(80-84)	(71-75)	(80-84)

BREAST (ICD-IX 174-5)

VARESE - Incident cases 1990-'94

AGE CLASSES	Men	Women
15-44	1	327
45-54	3	573
55-64	7	540
65-74	9	534
75+	8	521
ALL	28	2,495

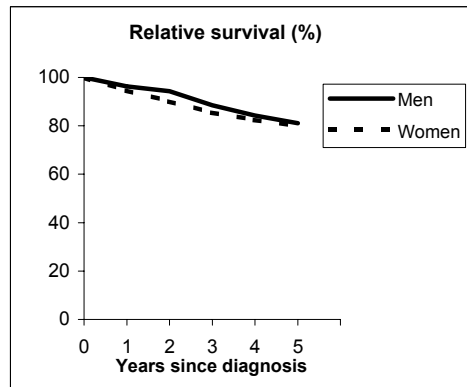


Observed and Relative survival (%)
(in parenthesis 95% confidence limits of 5 years survival)

	Men		Women		ALL	
	obs	rel	obs	rel	obs	rel
1 year	100	104	94	96	94	96
3 years	82	93	81	86	81	86
5 years	75	93	72	80	72	80
95% CI	(57-87)	(71-109)	(70-74)	(78-82)	(70-74)	(78-82)

VENETO - Incident cases 1990-'94

AGE CLASSES	Men	Women
15-44	7	742
45-54	10	1,318
55-64	14	1,404
65-74	15	1,516
75+	14	1,373
ALL	60	6,353



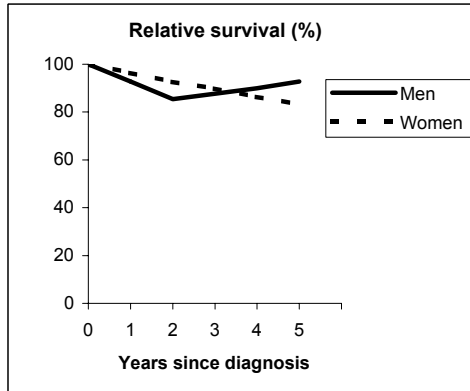
Observed and Relative survival (%)
(in parenthesis 95% confidence limits of 5 years survival)

	Men		Women		ALL	
	obs	rel	obs	rel	obs	rel
1 year	93	96	93	95	93	95
3 years	80	88	80	86	80	86
5 years	68	81	72	80	72	80
95% CI	(55-78)	(66-94)	(71-73)	(79-81)	(71-73)	(79-81)

BREAST (ICD-IX 174-5)

PARMA - Incident cases 1990-'94

AGE CLASSES	Men	Women
15-44	2	154
45-54	3	300
55-64	0	312
65-74	5	307
75+	1	281
ALL	11	1,354

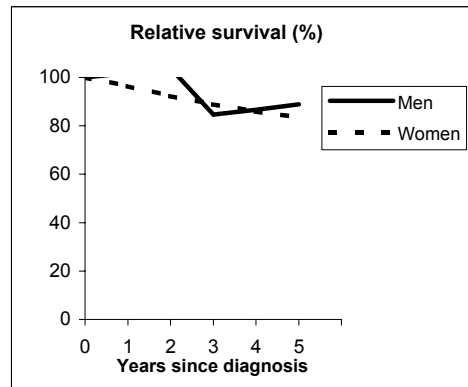


Observed and Relative survival (%)
(in parenthesis 95% confidence limits of 5 years survival)

	Men		Women		ALL	
	obs	rel	obs	rel	obs	rel
1 year	91	93	95	96	95	96
3 years	82	88	85	90	85	90
5 years	82	93	75	83	76	83
95% CI	(52-95)	(59-108)	(73-78)	(81-86)	(73-78)	(81-86)

MODENA - Incident cases 1990-'94

AGE CLASSES	Men	Women
15-44	0	238
45-54	3	396
55-64	3	442
65-74	3	488
75+	1	356
ALL	10	1,920



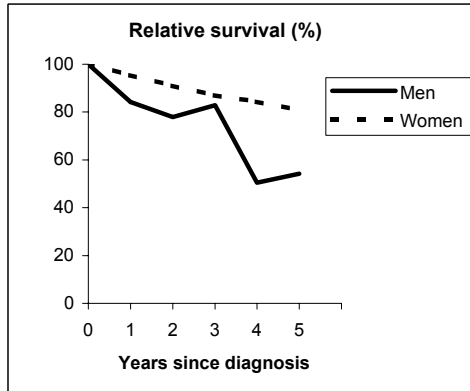
Observed and Relative survival (%)
(in parenthesis 95% confidence limits of 5 years survival)

	Men		Women		ALL	
	obs	rel	obs	rel	obs	rel
1 year	100	102	95	96	95	96
3 years	80	85	85	89	85	89
5 years	80	89	76	83	76	83
95% CI	(49-94)	(54-105)	(74-78)	(81-86)	(74-78)	(81-86)

BREAST (ICD-IX 174-5)

FERRARA - Incident cases 1990-'94

AGE CLASSES	Men	Women
15-44	0	158
45-54	1	258
55-64	0	320
65-74	5	328
75+	4	270
ALL	10	1,334

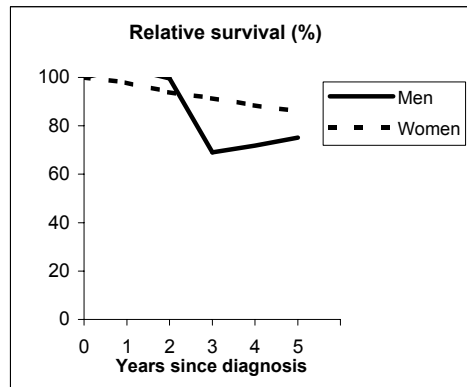


Observed and Relative survival (%)
(in parenthesis 95% confidence limits of 5 years survival)

	Men		Women		ALL	
	obs	rel	obs	rel	obs	rel
1 year	80	84	94	95	94	95
3 years	70	83	82	87	82	87
5 years	40	54	73	81	73	81
95% CI	(17-69)	(23-93)	(70-75)	(78-83)	(70-75)	(78-83)

ROMAGNA - Incident cases 1990-'94

AGE CLASSES	Men	Women
15-44	0	156
45-54	1	280
55-64	3	339
65-74	5	314
75+	4	297
ALL	13	1,386



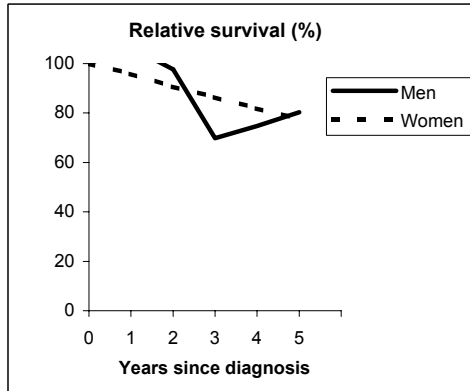
Observed and Relative survival (%)
(in parenthesis 95% confidence limits of 5 years survival)

	Men		Women		ALL	
	obs	rel	obs	rel	obs	rel
1 year	100	104	96	98	96	98
3 years	62	69	87	91	87	91
5 years	62	75	79	86	79	86
95% CI	(36-82)	(43-100)	(77-81)	(83-88)	(77-81)	(83-88)

BREAST (ICD-IX 174-5)

MACERATA - Incident cases 1991-'94

AGE CLASSES	Men	Women
15-44	0	74
45-54	0	115
55-64	1	146
65-74	3	142
75+	3	141
ALL	7	618

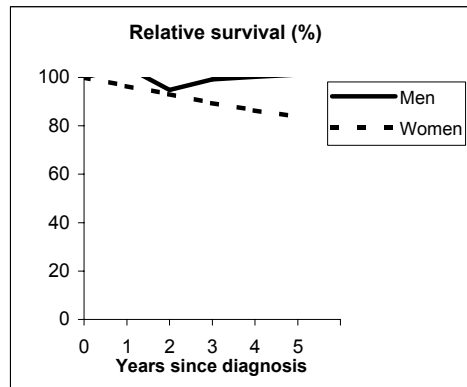


Observed and Relative survival (%)
(in parenthesis 95% confidence limits of 5 years survival)

	Men		Women		ALL	
	obs	rel	obs	rel	obs	rel
1 year	100	107	94	96	94	96
3 years	57	70	81	86	81	86
5 years	57	80	69	78	69	78
95% CI	(25-84)	(35-118)	(66-73)	(73-81)	(66-73)	(73-81)

FIRENZE-PRATO - Incident cases 1990-'94

AGE CLASSES	Men	Women
15-44	2	420
45-54	1	833
55-64	8	864
65-74	10	945
75+	10	751
ALL	31	3,813



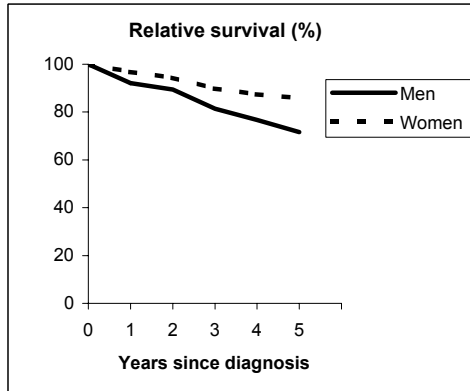
Observed and Relative survival (%)
(in parenthesis 95% confidence limits of 5 years survival)

	Men		Women		ALL	
	obs	rel	obs	rel	obs	rel
1 year	100	104	95	96	95	97
3 years	87	99	84	89	84	90
5 years	81	101	75	84	75	84
95% CI	(63-91)	(80-114)	(74-76)	(82-85)	(74-77)	(82-85)

BREAST (ICD-IX 174-5)

UMBRIA - Incident cases 1994-'96

AGE CLASSES	Men	Women
15-44	2	192
45-54	3	280
55-64	2	348
65-74	10	386
75+	3	270
ALL	20	1,476

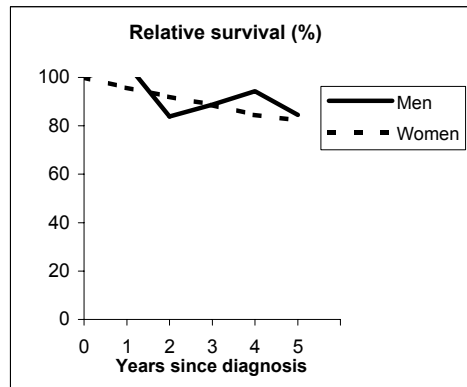


Observed and Relative survival (%)
(in parenthesis 95% confidence limits of 5 years survival)

	Men		Women		ALL	
	<i>obs</i>	<i>rel</i>	<i>obs</i>	<i>rel</i>	<i>obs</i>	<i>rel</i>
1 year	90	92	95	97	95	97
3 years	75	81	84	90	84	90
5 years	61	72	77	86	77	86
95% CI	(37-80)	(44-95)	(75-79)	(83-88)	(74-79)	(83-88)

LATINA - Incident cases 1990-'94

AGE CLASSES	Men	Women
15-44	1	111
45-54	1	168
55-64	1	165
65-74	1	150
75+	4	79
ALL	8	673



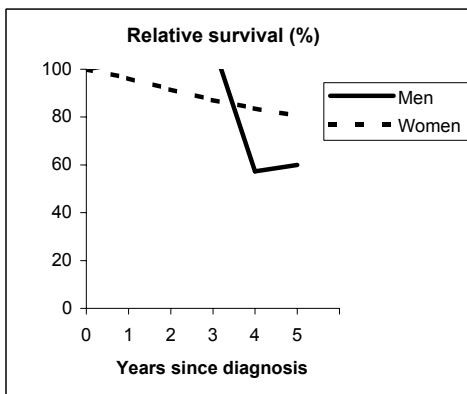
Observed and Relative survival (%)
(in parenthesis 95% confidence limits of 5 years survival)

	Men		Women		ALL	
	<i>obs</i>	<i>rel</i>	<i>obs</i>	<i>rel</i>	<i>obs</i>	<i>rel</i>
1 year	100	106	95	96	95	96
3 years	75	89	85	89	85	89
5 years	63	85	77	82	77	82
95% CI	(31-86)	(41-117)	(73-80)	(79-86)	(73-80)	(79-86)

BREAST (ICD-IX 174-5)

SASSARI - Incident cases 1992-'94

AGE CLASSES	Men	Women
15-44	0	102
45-54	0	122
55-64	1	147
65-74	0	139
75+	1	92
ALL	2	602

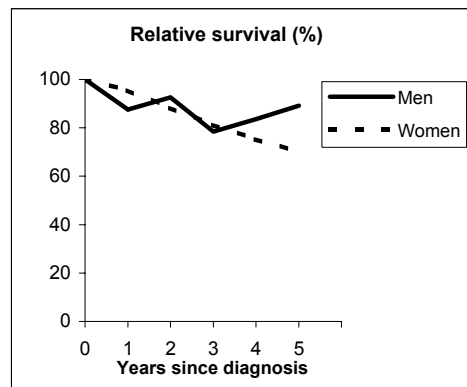


Observed and Relative survival (%)
(in parenthesis 95% confidence limits of 5 years survival)

	Men		Women		ALL	
	obs	rel	obs	rel	obs	rel
1 year	100	103	95	96	95	96
3 years	100	110	83	87	83	87
5 years	50	60	74	80	74	80
95% CI	(9-91)	(11-109)	(71-78)	(77-84)	(70-77)	(76-84)

RAGUSA - Incident cases 1990-'94

AGE CLASSES	Men	Women
15-44	1	75
45-54	0	80
55-64	1	150
65-74	1	123
75+	3	83
ALL	6	511



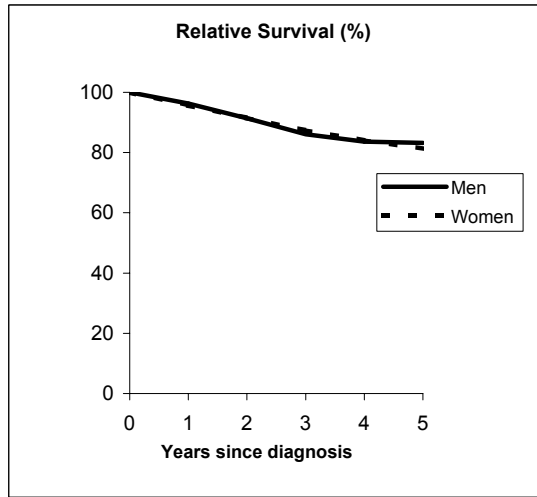
Observed and Relative survival (%)
(in parenthesis 95% confidence limits of 5 years survival)

	Men		Women		ALL	
	obs	rel	obs	rel	obs	rel
1 year	83	88	94	95	94	95
3 years	67	78	77	81	76	81
5 years	67	89	63	70	63	70
95% CI	(30-90)	(40-121)	(59-67)	(65-75)	(59-67)	(66-75)

BREAST (ICD-IX 174-5)

Pool of Italian Registries

REGISTRY	Number of cases		
	Men	Women	Total
Torino	17	3,009	3,026
Genova	25	2,573	2,598
Varese	28	2,495	2,523
Veneto	60	6,353	6,413
Parma	11	1,354	1,365
Modena	10	1,920	1,930
Ferrara	10	1,334	1,344
Romagna	13	1,386	1,399
Macerata	7	618	625
Firenze-Prato	31	3,813	3,844
Umbria	20	1,476	1,496
Latina	8	673	681
Sassari	2	602	604
Ragusa	6	511	517
Italy	248	28,117	28,365



Observed and relative survival (%) by sex and age classes

	15-44		45-54		55-64		65-74		75+		ALL	
	obs	rel	obs	rel	obs	rel	obs	rel	obs	rel	obs	rel
Men												
1 year	94	95	100	100	94	95	90	92	91	100	93	96
3 years	72	73	97	98	90	94	77	85	59	78	77	86
5 years	72	73	94	97	84	91	67	81	44	73	68	83
95% CI	(49-88)	(50-88)	(80-98)	(82-101)	(71-91)	(77-99)	(56-77)	(67-92)	(33-56)	(55-93)	(62-73)	(76-90)
Women												
1 year	98	99	98	98	96	97	94	95	84	90	94	96
3 years	91	91	91	91	87	88	83	87	64	79	83	87
5 years	83	83	85	86	79	82	74	81	50	73	74	81
95% CI	(81-84)	(82-84)	(84-85)	(85-87)	(78-80)	(81-83)	(73-75)	(80-82)	(48-51)	(71-75)	(73-74)	(81-82)
Total												
1 year	98	99	98	98	96	97	94	95	84	90	94	96
3 years	91	91	91	92	87	89	83	87	64	79	83	87
5 years	83	83	85	86	79	82	74	81	49	73	74	81
95% CI	(81-84)	(82-84)	(84-85)	(85-87)	(78-80)	(81-83)	(73-75)	(80-82)	(48-51)	(71-75)	(73-74)	(81-82)

Five Years Age-adjusted Relative Survival of 1986-89 and 1990-94 incident cases

Men and Women

