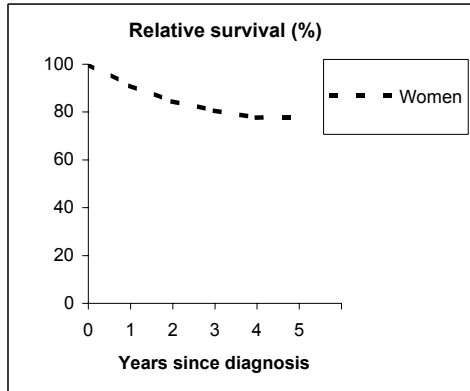


CORPUS UTERI (ICD-IX 182)

TORINO - Incident cases 1990-'94

AGE CLASSES	Women
15-44	14
45-54	76
55-64	153
65-74	151
75+	84
ALL	478

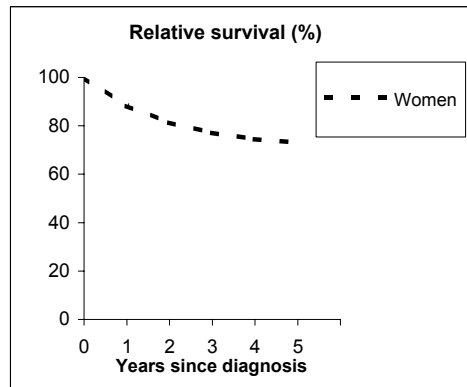


Observed and Relative survival (%)
(in parenthesis 95% confidence limits of 5 years survival)

	Men		Women		ALL	
	obs	rel	obs	rel	obs	rel
1 year	-	-	90	91	90	91
3 years	-	-	76	81	76	81
5 years	-	-	71	78	71	78
95% CI	-	-	(67-75)	(73-82)	(67-75)	(73-82)

GENOVA - Incident cases 1990-'94

AGE CLASSES	Women
15-44	8
45-54	61
55-64	92
65-74	96
75+	88
ALL	345



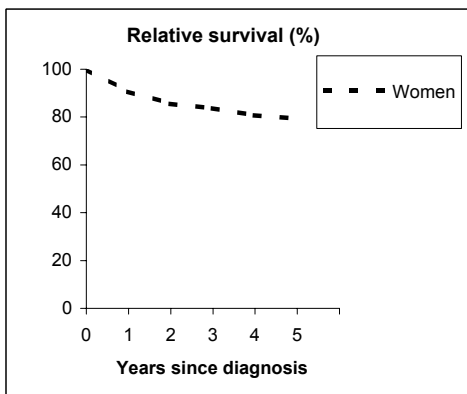
Observed and Relative survival (%)
(in parenthesis 95% confidence limits of 5 years survival)

	Men		Women		ALL	
	obs	rel	obs	rel	obs	rel
1 year	-	-	86	88	86	88
3 years	-	-	72	77	72	77
5 years	-	-	64	73	64	73
95% CI	-	-	(59-69)	(67-79)	(59-69)	(67-79)

CORPUS UTERI (ICD-IX 182)

VARESE - Incident cases 1990-'94

AGE CLASSES	Women
15-44	20
45-54	72
55-64	111
65-74	114
75+	100
ALL	417

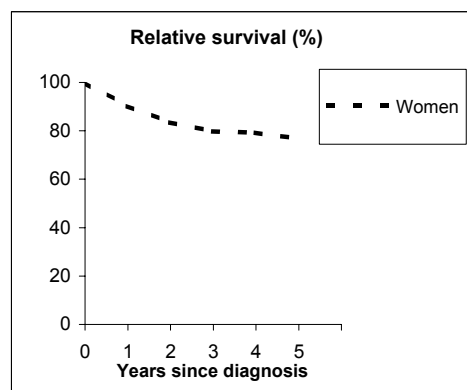


Observed and Relative survival (%)
(in parenthesis 95% confidence limits of 5 years survival)

	Men		Women		ALL	
	obs	rel	obs	rel	obs	rel
1 year	-	-	89	91	89	91
3 years	-	-	79	84	79	84
5 years	-	-	71	79	71	79
95% CI	-	-	(66-75)	(74-84)	(66-75)	(74-84)

VENETO - Incident cases 1990-'94

AGE CLASSES	Women
15-44	34
45-54	145
55-64	237
65-74	270
75+	194
ALL	880



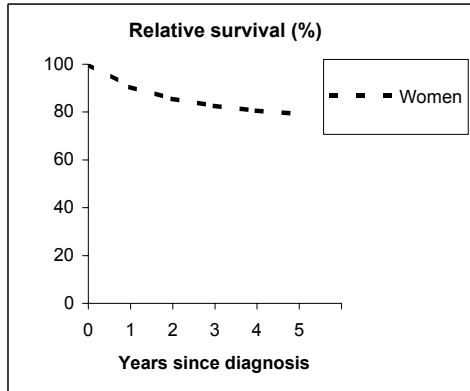
Observed and Relative survival (%)
(in parenthesis 95% confidence limits of 5 years survival)

	Men		Women		ALL	
	obs	rel	obs	rel	obs	rel
1 year	-	-	89	90	89	90
3 years	-	-	75	80	75	80
5 years	-	-	69	77	69	77
95% CI	-	-	(66-72)	(73-80)	(66-72)	(73-80)

CORPUS UTERI (ICD-IX 182)

PARMA - Incident cases 1990-'94

AGE CLASSES	Women
15-44	18
45-54	49
55-64	70
65-74	83
75+	58
ALL	278

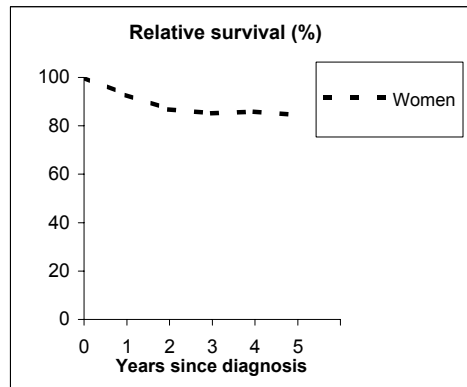


Observed and Relative survival (%)
(in parenthesis 95% confidence limits of 5 years survival)

	Men		Women		ALL	
	obs	rel	obs	rel	obs	rel
1 year	-	-	89	90	89	90
3 years	-	-	78	83	78	83
5 years	-	-	72	79	72	79
95% CI	-	-	(66-77)	(73-85)	(66-77)	(73-85)

MODENA - Incident cases 1990-'94

AGE CLASSES	Women
15-44	14
45-54	61
55-64	102
65-74	124
75+	74
ALL	375



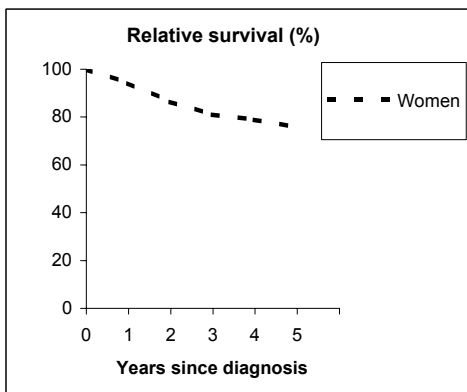
Observed and Relative survival (%)
(in parenthesis 95% confidence limits of 5 years survival)

	Men		Women		ALL	
	obs	rel	obs	rel	obs	rel
1 year	-	-	91	93	91	93
3 years	-	-	80	85	80	85
5 years	-	-	76	84	76	84
95% CI	-	-	(72-80)	(79-89)	(72-80)	(79-89)

CORPUS UTERI (ICD-IX 182)

FERRARA - Incident cases 1990-'94

AGE CLASSES	Women
15-44	12
45-54	35
55-64	63
65-74	80
75+	47
ALL	237

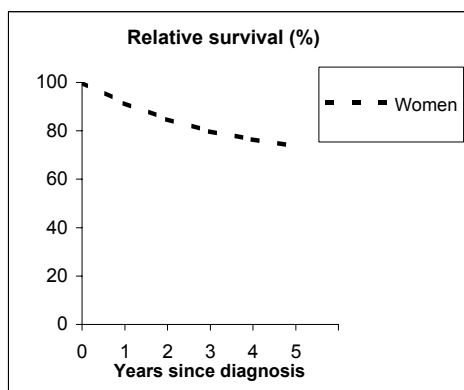


Observed and Relative survival (%)
(in parenthesis 95% confidence limits of 5 years survival)

	Men		Women		ALL	
	obs	rel	obs	rel	obs	rel
1 year	-	-	92	94	92	94
3 years	-	-	76	81	76	81
5 years	-	-	68	76	68	76
95% CI	-	-	(61-73)	(69-82)	(61-73)	(69-82)

ROMAGNA - Incident cases 1990-'94

AGE CLASSES	Women
15-44	10
45-54	34
55-64	65
65-74	81
75+	57
ALL	247



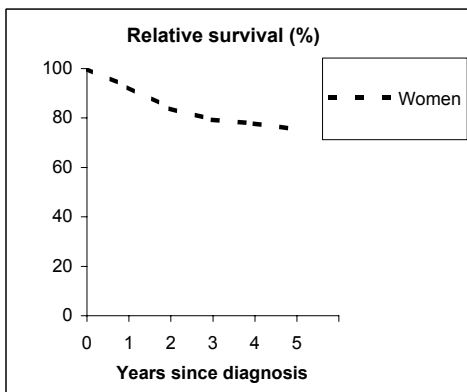
Observed and Relative survival (%)
(in parenthesis 95% confidence limits of 5 years survival)

	Men		Women		ALL	
	obs	rel	obs	rel	obs	rel
1 year	-	-	90	91	90	91
3 years	-	-	77	80	77	80
5 years	-	-	68	74	68	74
95% CI	-	-	(62-74)	(67-80)	(62-74)	(67-80)

CORPUS UTERI (ICD-IX 182)

MACERATA - Incident cases 1991-'94

AGE CLASSES	Women
15-44	4
45-54	19
55-64	29
65-74	51
75+	42
ALL	145

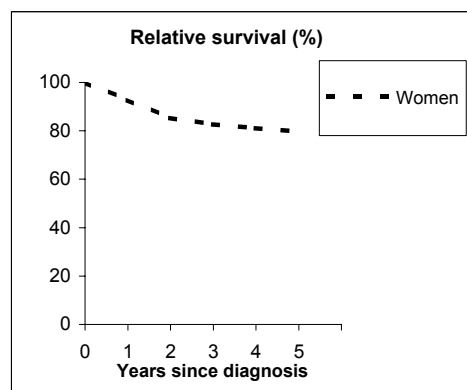


Observed and Relative survival (%)
(in parenthesis 95% confidence limits of 5 years survival)

	Men		Women		ALL	
	obs	rel	obs	rel	obs	rel
1 year	-	-	90	92	90	92
3 years	-	-	74	79	74	79
5 years	-	-	66	75	66	75
95% CI	-	-	(58-73)	(66-84)	(58-73)	(66-84)

FIRENZE-PRATO - Incident cases 1990-'94

AGE CLASSES	Women
15-44	35
45-54	120
55-64	198
65-74	209
75+	151
ALL	713



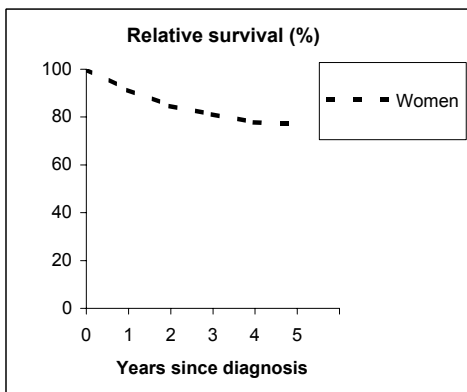
Observed and Relative survival (%)
(in parenthesis 95% confidence limits of 5 years survival)

	Men		Women		ALL	
	obs	rel	obs	rel	obs	rel
1 year	-	-	91	93	91	93
3 years	-	-	78	83	78	83
5 years	-	-	72	80	72	80
95% CI	-	-	(69-75)	(76-83)	(69-75)	(76-83)

CORPUS UTERI (ICD-IX 182)

UMBRIA - Incident cases 1994-'96

AGE CLASSES	Women
15-44	11
45-54	47
55-64	90
65-74	101
75+	66
ALL	315

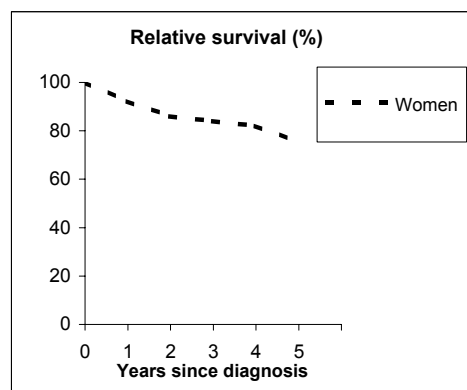


Observed and Relative survival (%)
(in parenthesis 95% confidence limits of 5 years survival)

	Men		Women		ALL	
	obs	rel	obs	rel	obs	rel
1 year	-	-	90	91	90	91
3 years	-	-	76	81	76	81
5 years	-	-	69	77	69	77
95% CI	-	-	(63-74)	(71-83)	(63-74)	(71-83)

LATINA - Incident cases 1990-'94

AGE CLASSES	Women
15-44	3
45-54	18
55-64	42
65-74	43
75+	17
ALL	123



Observed and Relative survival (%)
(in parenthesis 95% confidence limits of 5 years survival)

	Men		Women		ALL	
	obs	rel	obs	rel	obs	rel
1 year	-	-	91	92	91	92
3 years	-	-	80	84	80	84
5 years	-	-	70	75	70	75
95% CI	-	-	(61-77)	(66-83)	(61-77)	(66-83)

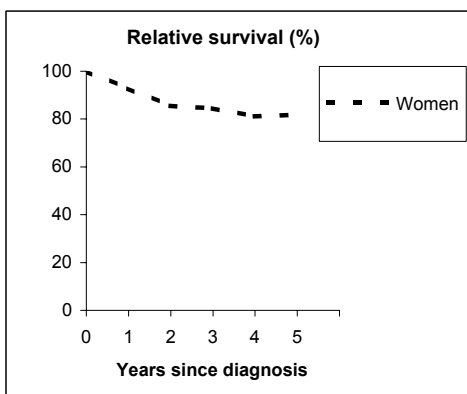
CORPUS UTERI (ICD-IX 182)

SASSARI - Incident cases 1992-'94

AGE CLASSES

15-44
45-54
55-64
65-74
75+
ALL

Women
6
24
46
45
12
133



Observed and Relative survival (%)
(in parenthesis 95% confidence limits of 5 years survival)

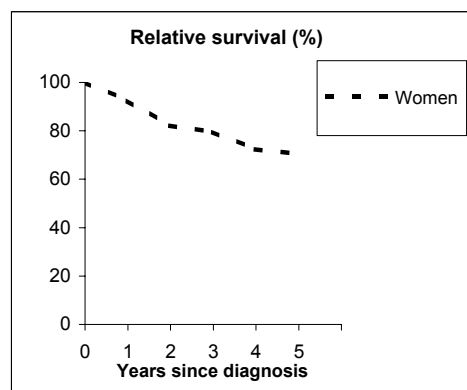
	<i>Men</i>		<i>Women</i>		ALL	
	<i>obs</i>	<i>rel</i>	<i>obs</i>	<i>rel</i>	<i>obs</i>	<i>rel</i>
1 year	-	-	92	93	92	93
3 years	-	-	81	85	81	85
5 years	-	-	76	82	76	82
95% CI	-	-	(68-82)	(73-89)	(68-82)	(73-89)

RAGUSA - Incident cases 1990-'94

AGE CLASSES

15-44
45-54
55-64
65-74
75+
ALL

Women
5
15
39
38
24
121



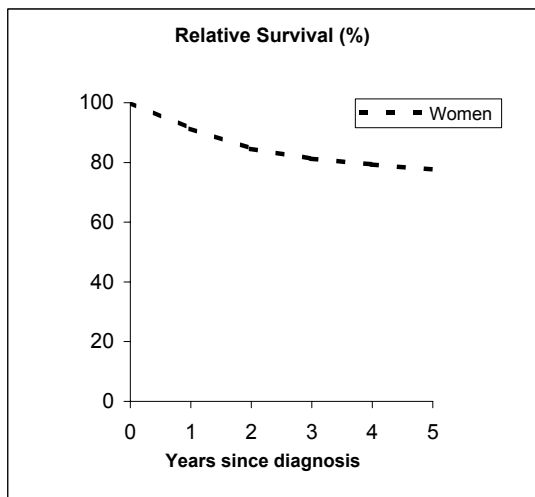
Observed and Relative survival (%)
(in parenthesis 95% confidence limits of 5 years survival)

	<i>Men</i>		<i>Women</i>		ALL	
	<i>obs</i>	<i>rel</i>	<i>obs</i>	<i>rel</i>	<i>obs</i>	<i>rel</i>
1 year	-	-	91	92	91	92
3 years	-	-	75	80	75	80
5 years	-	-	64	71	64	71
95% CI	-	-	(55-72)	(61-79)	(55-72)	(61-79)

CORPUS UTERI (ICD-IX 182)

Pool of Italian Registries

REGISTRY	Number of cases Women
Torino	478
Genova	345
Varese	417
Veneto	880
Parma	278
Modena	375
Ferrara	237
Romagna	247
Macerata	145
Firenze-Prato	713
Umbria	315
Latina	123
Sassari	133
Ragusa	121
Italy	4,807



Observed and relative survival (%) by sex and age classes

	15-44		45-54		55-64		65-74		75+		ALL	
	obs	rel	obs	rel	obs	rel	obs	rel	obs	rel	obs	rel
Men												
1 year	-	-	-	-	-	-	-	-	-	-	-	-
3 years	-	-	-	-	-	-	-	-	-	-	-	-
5 years	-	-	-	-	-	-	-	-	-	-	-	-
95% CI	-	-	-	-	-	-	-	-	-	-	-	-
Women												
1 year	97	98	97	97	94	95	90	91	76	80	90	91
3 years	89	89	91	92	86	87	77	80	52	62	77	81
5 years	86	87	87	88	81	84	69	75	41	57	70	78
95% CI	(80-90)	(81-91)	(84-89)	(85-90)	(79-83)	(82-86)	(67-71)	(73-78)	(38-44)	(53-62)	(69-71)	(76-79)
Total												
1 year	97	98	97	97	94	95	90	91	76	80	90	91
3 years	89	89	91	92	86	87	77	80	52	62	77	81
5 years	86	87	87	88	81	84	69	75	41	57	70	78
95% CI	(80-90)	(81-91)	(84-89)	(85-90)	(79-83)	(82-86)	(67-71)	(73-78)	(38-44)	(53-62)	(69-71)	(76-79)

Five Years Age-adjusted Relative Survival of 1986-89 and 1990-94 incident cases

