

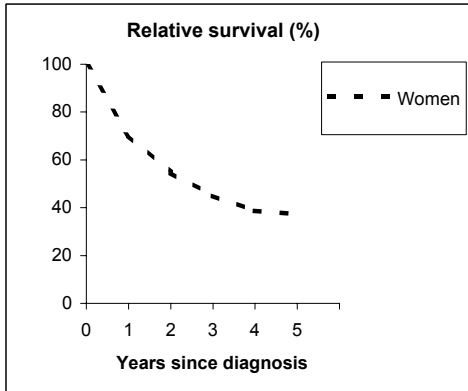
OVARY (ICD-IX 183)

TORINO - Incident cases 1990-'94

AGE CLASSES

15-44	23
45-54	67
55-64	103
65-74	109
75+	72
ALL	374

Women



Observed and Relative survival (%)
(in parenthesis 95% confidence limits of 5 years survival)

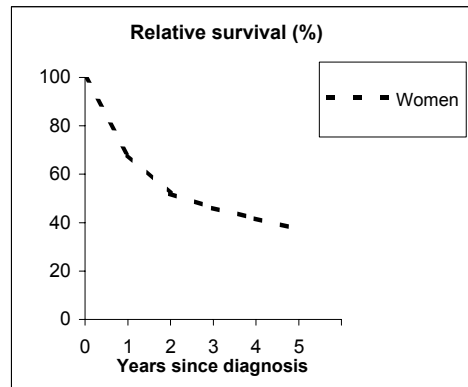
	Men		Women		ALL	
	obs	rel	obs	rel	obs	rel
1 year	-	-	69	70	69	70
3 years	-	-	43	45	43	45
5 years	-	-	34	37	34	37
95% CI	-	-	(29-39)	(32-43)	(29-39)	(32-43)

GENOVA - Incident cases 1990-'94

AGE CLASSES

15-44	23
45-54	51
55-64	82
65-74	63
75+	91
ALL	310

Women



Observed and Relative survival (%)
(in parenthesis 95% confidence limits of 5 years survival)

	Men		Women		ALL	
	obs	rel	obs	rel	obs	rel
1 year	-	-	66	68	66	68
3 years	-	-	43	46	43	46
5 years	-	-	32	37	32	37
95% CI	-	-	(27-38)	(31-43)	(27-38)	(31-43)

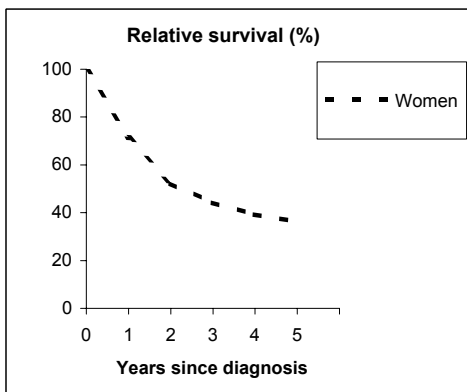
OVARY (ICD-IX 183)

VARESE - Incident cases 1990-'94

AGE CLASSES

15-44
45-54
55-64
65-74
75+
ALL

Women
39
57
84
67
95
342



Observed and Relative survival (%)
(in parenthesis 95% confidence limits of 5 years survival)

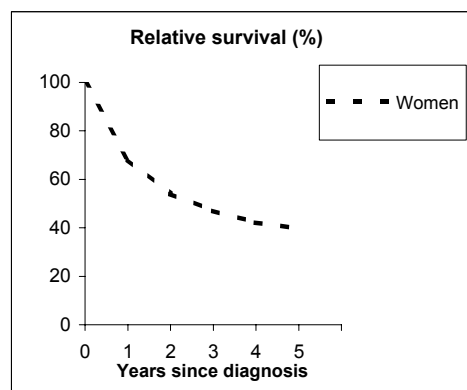
	Men		Women		ALL	
	obs	rel	obs	rel	obs	rel
1 year	-	-	70	71	70	71
3 years	-	-	41	44	41	44
5 years	-	-	32	36	32	36
95% CI	-	-	(27-37)	(31-42)	(27-37)	(31-42)

VENETO - Incident cases 1990-'94

AGE CLASSES

15-44
45-54
55-64
65-74
75+
ALL

Women
96
140
185
193
182
796



Observed and Relative survival (%)
(in parenthesis 95% confidence limits of 5 years survival)

	Men		Women		ALL	
	obs	rel	obs	rel	obs	rel
1 year	-	-	67	68	67	68
3 years	-	-	44	47	44	47
5 years	-	-	36	40	36	40
95% CI	-	-	(32-39)	(36-44)	(32-39)	(36-44)

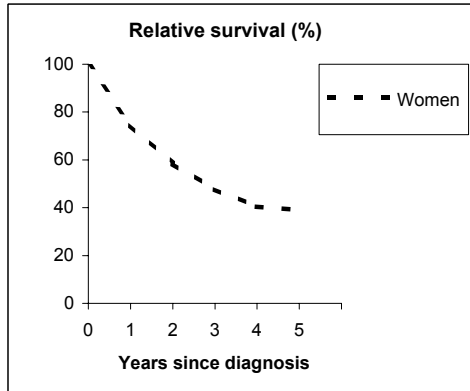
OVARY (ICD-IX 183)

PARMA - Incident cases 1990-'94

AGE CLASSES

15-44	18
45-54	29
55-64	49
65-74	49
75+	49
ALL	194

Women



Observed and Relative survival (%)
(in parenthesis 95% confidence limits of 5 years survival)

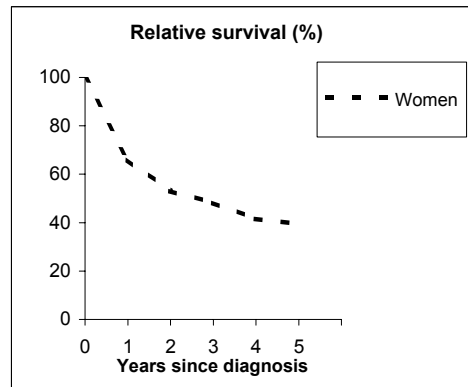
	Men		Women		ALL	
	obs	rel	obs	rel	obs	rel
1 year	-	-	73	75	73	75
3 years	-	-	45	48	45	48
5 years	-	-	35	39	35	39
95% CI	-	-	(29-42)	(32-47)	(29-42)	(32-47)

MODENA - Incident cases 1990-'94

AGE CLASSES

15-44	38
45-54	39
55-64	69
65-74	72
75+	83
ALL	301

Women



Observed and Relative survival (%)
(in parenthesis 95% confidence limits of 5 years survival)

	Men		Women		ALL	
	obs	rel	obs	rel	obs	rel
1 year	-	-	65	66	65	66
3 years	-	-	45	48	45	48
5 years	-	-	35	39	35	39
95% CI	-	-	(30-41)	(34-46)	(30-41)	(34-46)

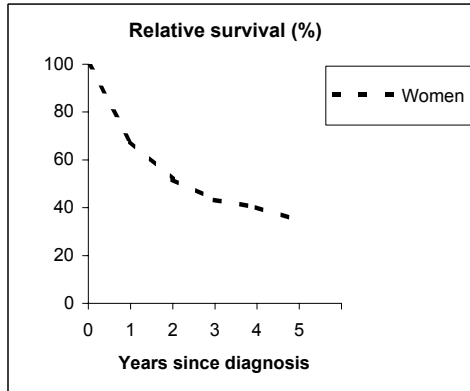
OVARY (ICD-IX 183)

FERRARA - Incident cases 1990-'94

AGE CLASSES

15-44	14
45-54	16
55-64	27
65-74	45
75+	30
ALL	132

Women



Observed and Relative survival (%)
(in parenthesis 95% confidence limits of 5 years survival)

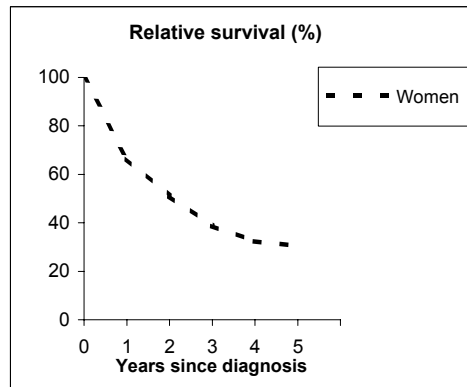
	Men		Women		ALL	
	obs	rel	obs	rel	obs	rel
1 year	-	-	66	68	66	68
3 years	-	-	40	43	40	43
5 years	-	-	31	34	31	34
95% CI	-	-	(23-39)	(26-44)	(23-39)	(26-44)

ROMAGNA - Incident cases 1990-'94

AGE CLASSES

15-44	12
45-54	30
55-64	40
65-74	47
75+	53
ALL	182

Women



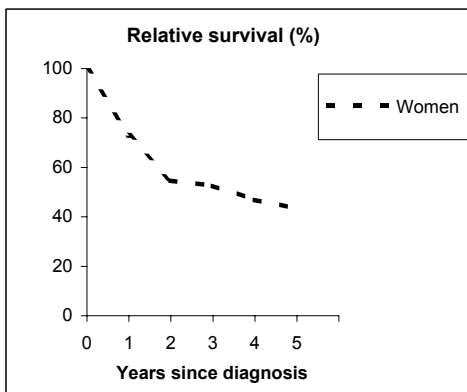
Observed and Relative survival (%)
(in parenthesis 95% confidence limits of 5 years survival)

	Men		Women		ALL	
	obs	rel	obs	rel	obs	rel
1 year	-	-	65	66	65	66
3 years	-	-	37	39	37	39
5 years	-	-	28	31	28	31
95% CI	-	-	(22-35)	(24-38)	(22-35)	(24-38)

OVARY (ICD-IX 183)

MACERATA - Incident cases 1991-'94

AGE CLASSES	Women
15-44	13
45-54	10
55-64	20
65-74	33
75+	20
ALL	96

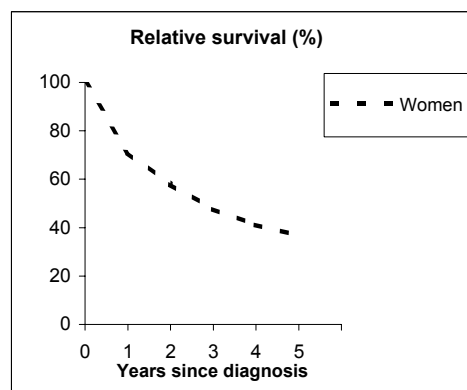


Observed and Relative survival (%)
(in parenthesis 95% confidence limits of 5 years survival)

	Men		Women		ALL	
	obs	rel	obs	rel	obs	rel
1 year	-	-	72	73	72	73
3 years	-	-	50	53	50	53
5 years	-	-	39	43	39	43
95% CI	-	-	(30-49)	(33-55)	(30-49)	(33-55)

FIRENZE-PRATO - Incident cases 1990-'94

AGE CLASSES	Women
15-44	59
45-54	92
55-64	115
65-74	128
75+	98
ALL	492



Observed and Relative survival (%)
(in parenthesis 95% confidence limits of 5 years survival)

	Men		Women		ALL	
	obs	rel	obs	rel	obs	rel
1 year	-	-	70	71	70	71
3 years	-	-	45	48	45	48
5 years	-	-	33	37	33	37
95% CI	-	-	(29-37)	(32-41)	(29-37)	(32-41)

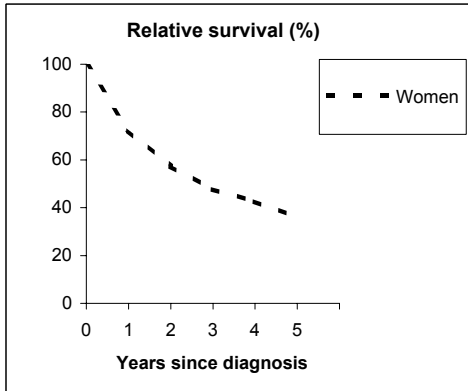
OVARY (ICD-IX 183)

UMBRIA - Incident cases 1994-'96

AGE CLASSES

15-44	24
45-54	39
55-64	44
65-74	72
75+	53
ALL	232

Women



Observed and Relative survival (%)
(in parenthesis 95% confidence limits of 5 years survival)

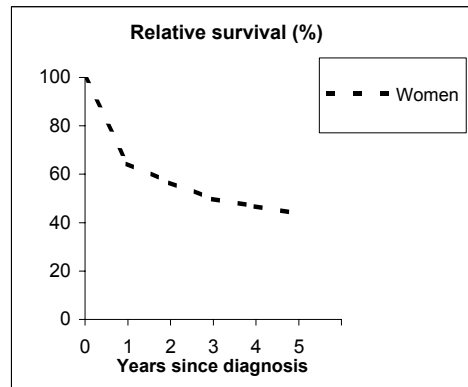
	Men		Women		ALL	
	<i>obs</i>	<i>rel</i>	<i>obs</i>	<i>rel</i>	<i>obs</i>	<i>rel</i>
1 year	-	-	71	72	71	72
3 years	-	-	44	48	44	48
5 years	-	-	32	36	32	36
95% CI	-	-	(25-39)	(29-44)	(25-39)	(29-44)

LATINA - Incident cases 1990-'94

AGE CLASSES

15-44	13
45-54	15
55-64	22
65-74	19
75+	13
ALL	82

Women



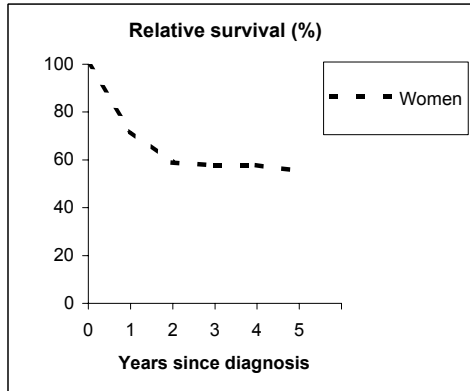
Observed and Relative survival (%)
(in parenthesis 95% confidence limits of 5 years survival)

	Men		Women		ALL	
	<i>obs</i>	<i>rel</i>	<i>obs</i>	<i>rel</i>	<i>obs</i>	<i>rel</i>
1 year	-	-	63	64	63	64
3 years	-	-	48	50	48	50
5 years	-	-	40	44	40	44
95% CI	-	-	(30-51)	(33-55)	(30-51)	(33-55)

OVARY (ICD-IX 183)

SASSARI - Incident cases 1992-'94

AGE CLASSES	Women
15-44	11
45-54	13
55-64	21
65-74	21
75+	19
ALL	85

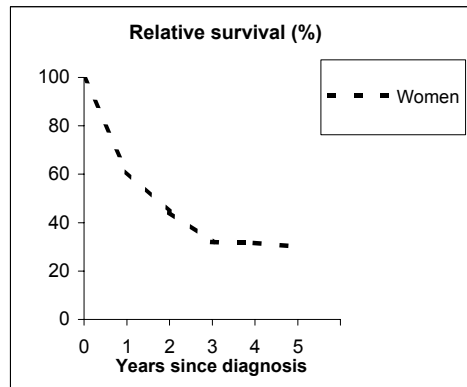


Observed and Relative survival (%)
(in parenthesis 95% confidence limits of 5 years survival)

	Men		Women		ALL	
	<i>obs</i>	<i>rel</i>	<i>obs</i>	<i>rel</i>	<i>obs</i>	<i>rel</i>
1 year	-	-	71	72	71	72
3 years	-	-	54	58	54	58
5 years	-	-	49	55	49	55
95% CI	-	-	(39-60)	(44-67)	(39-60)	(44-67)

RAGUSA - Incident cases 1990-'94

AGE CLASSES	Women
15-44	7
45-54	11
55-64	26
65-74	23
75+	20
ALL	87



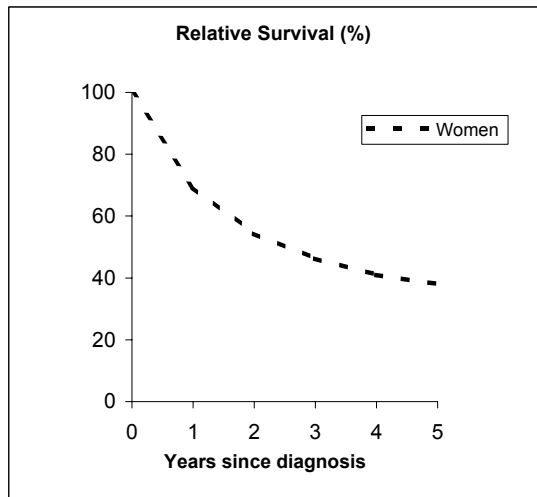
Observed and Relative survival (%)
(in parenthesis 95% confidence limits of 5 years survival)

	Men		Women		ALL	
	<i>obs</i>	<i>rel</i>	<i>obs</i>	<i>rel</i>	<i>obs</i>	<i>rel</i>
1 year	-	-	60	61	60	61
3 years	-	-	30	32	30	32
5 years	-	-	26	30	26	30
95% CI	-	-	(18-37)	(21-41)	(18-37)	(21-41)

OVARY (ICD-IX 183)

Pool of Italian Registries

REGISTRY	Number of cases Women
Torino	374
Genova	310
Varese	342
Veneto	796
Parma	194
Modena	301
Ferrara	132
Romagna	182
Macerata	96
Firenze-Prato	492
Umbria	232
Latina	82
Sassari	85
Ragusa	87
Italy	3,705



Observed and relative survival (%) by sex and age classes

	15-44		45-54		55-64		65-74		75+		ALL	
	obs	rel	obs	rel	obs	rel	obs	rel	obs	rel	obs	rel
Men												
1 year	-	-	-	-	-	-	-	-	-	-	-	-
3 years	-	-	-	-	-	-	-	-	-	-	-	-
5 years	-	-	-	-	-	-	-	-	-	-	-	-
95% CI	-	-	-	-	-	-	-	-	-	-	-	-
Women												
1 year	92	92	86	86	76	77	64	65	41	44	68	69
3 years	79	80	61	62	50	51	33	35	20	24	43	46
5 years	72	72	48	49	39	40	24	26	13	19	34	38
95% CI	(67-76)	(68-77)	(44-52)	(45-53)	(35-42)	(37-43)	(21-27)	(23-29)	(11-16)	(16-22)	(32-36)	(36-40)
Total												
1 year	92	92	86	86	76	77	64	65	41	44	68	69
3 years	79	80	61	62	50	51	33	35	20	24	43	46
5 years	72	72	48	49	39	40	24	26	13	19	34	38
95% CI	(67-76)	(68-77)	(44-52)	(45-53)	(35-42)	(37-43)	(21-27)	(23-29)	(11-16)	(16-22)	(32-36)	(36-40)

Five Years Age-adjusted Relative Survival of 1986-89 and 1990-94 incident cases

