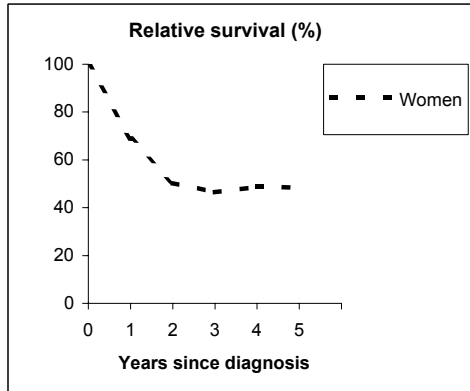


# VAGINA & VULVA (ICD-IX 184)

## TORINO - Incident cases 1990-'94

AGE CLASSES	Women
15-44	0
45-54	1
55-64	10
65-74	34
75+	46
<b>ALL</b>	<b>91</b>

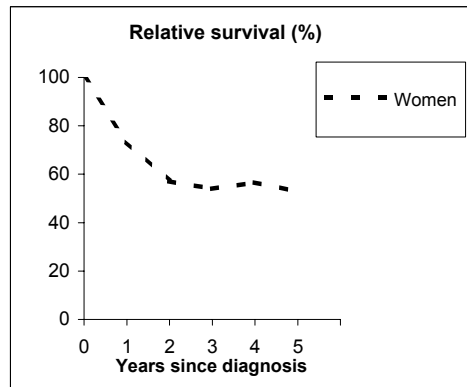


**Observed and Relative survival (%)**  
(in parenthesis 95% confidence limits of 5 years survival)

	Men		Women		ALL	
	obs	rel	obs	rel	obs	rel
1 year	-	-	66	69	66	69
3 years	-	-	41	46	41	46
<b>5 years</b>	-	-	<b>38</b>	<b>48</b>	<b>38</b>	<b>48</b>
95% CI	-	-	(29-49)	(37-61)	(29-49)	(37-61)

## GENOVA - Incident cases 1990-'94

AGE CLASSES	Women
15-44	3
45-54	7
55-64	11
65-74	14
75+	43
<b>ALL</b>	<b>78</b>



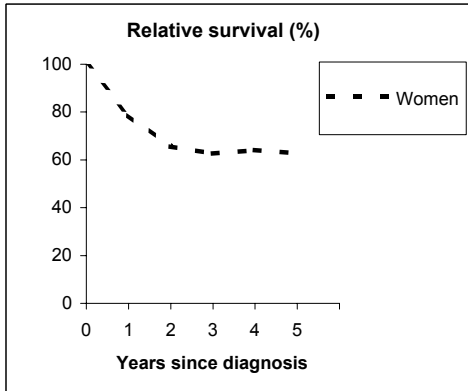
**Observed and Relative survival (%)**  
(in parenthesis 95% confidence limits of 5 years survival)

	Men		Women		ALL	
	obs	rel	obs	rel	obs	rel
1 year	-	-	71	73	71	73
3 years	-	-	47	54	47	54
<b>5 years</b>	-	-	<b>42</b>	<b>53</b>	<b>42</b>	<b>53</b>
95% CI	-	-	(32-53)	(40-67)	(32-53)	(40-67)

# VAGINA & VULVA (ICD-IX 184)

## VARESE - Incident cases 1990-'94

AGE CLASSES	Women
15-44	5
45-54	6
55-64	8
65-74	23
75+	37
<b>ALL</b>	<b>79</b>

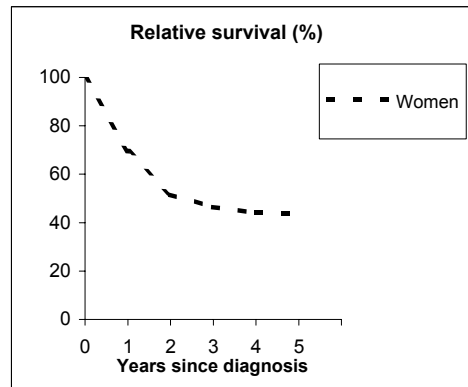


**Observed and Relative survival (%)**  
(in parenthesis 95% confidence limits of 5 years survival)

	Men		Women		ALL	
	obs	rel	obs	rel	obs	rel
1 year	-	-	76	79	76	79
3 years	-	-	56	63	56	63
<b>5 years</b>	-	-	<b>51</b>	<b>63</b>	<b>51</b>	<b>63</b>
95% CI	-	-	(40-61)	(49-76)	(40-61)	(49-76)

## VENETO - Incident cases 1990-'94

AGE CLASSES	Women
15-44	3
45-54	11
55-64	30
65-74	59
75+	121
<b>ALL</b>	<b>224</b>



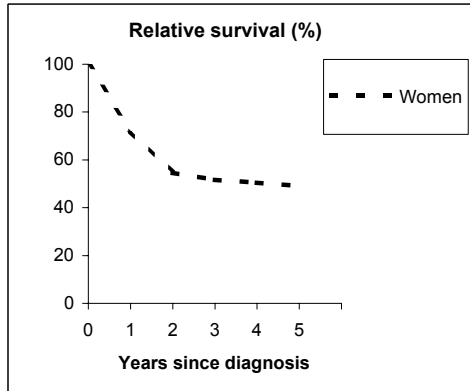
**Observed and Relative survival (%)**  
(in parenthesis 95% confidence limits of 5 years survival)

	Men		Women		ALL	
	obs	rel	obs	rel	obs	rel
1 year	-	-	67	69	67	69
3 years	-	-	41	46	41	46
<b>5 years</b>	-	-	<b>35</b>	<b>44</b>	<b>35</b>	<b>44</b>
95% CI	-	-	(29-41)	(36-52)	(29-41)	(36-52)

# VAGINA & VULVA (ICD-IX 184)

## PARMA - Incident cases 1990-'94

AGE CLASSES	Women
15-44	1
45-54	2
55-64	4
65-74	21
75+	29
<b>ALL</b>	<b>57</b>

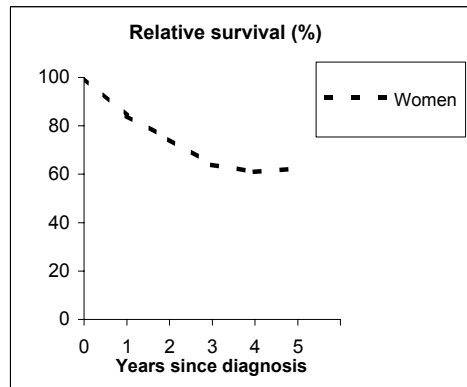


**Observed and Relative survival (%)**  
(in parenthesis 95% confidence limits of 5 years survival)

	Men		Women		ALL	
	obs	rel	obs	rel	obs	rel
1 year	-	-	68	72	68	72
3 years	-	-	44	52	44	52
<b>5 years</b>	-	-	<b>37</b>	<b>49</b>	<b>37</b>	<b>49</b>
95% CI	-	-	(26-50)	(34-66)	(26-50)	(34-66)

## MODENA - Incident cases 1990-'94

AGE CLASSES	Women
15-44	3
45-54	0
55-64	6
65-74	12
75+	37
<b>ALL</b>	<b>58</b>



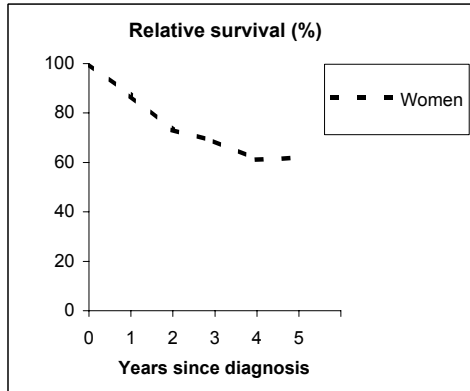
**Observed and Relative survival (%)**  
(in parenthesis 95% confidence limits of 5 years survival)

	Men		Women		ALL	
	obs	rel	obs	rel	obs	rel
1 year	-	-	81	84	81	84
3 years	-	-	56	64	56	64
<b>5 years</b>	-	-	<b>48</b>	<b>62</b>	<b>48</b>	<b>62</b>
95% CI	-	-	(36-61)	(46-79)	(36-61)	(46-79)

# VAGINA & VULVA (ICD-IX 184)

## FERRARA - Incident cases 1990-'94

AGE CLASSES	Women
15-44	2
45-54	6
55-64	4
65-74	14
75+	29
<b>ALL</b>	<b>55</b>

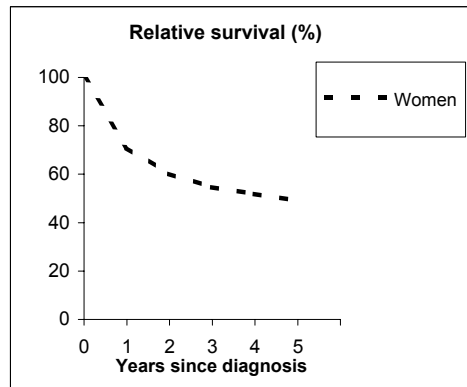


**Observed and Relative survival (%)**  
(in parenthesis 95% confidence limits of 5 years survival)

	Men		Women		ALL	
	obs	rel	obs	rel	obs	rel
1 year	-	-	84	87	84	87
3 years	-	-	60	68	60	68
<b>5 years</b>	-	-	<b>49</b>	<b>62</b>	<b>49</b>	<b>62</b>
95% CI	-	-	(36-62)	(46-78)	(36-62)	(46-78)

## FIRENZE-PRATO - Incident cases 1990-'94

AGE CLASSES	Women
15-44	5
45-54	3
55-64	20
65-74	45
75+	73
<b>ALL</b>	<b>146</b>



**Observed and Relative survival (%)**  
(in parenthesis 95% confidence limits of 5 years survival)

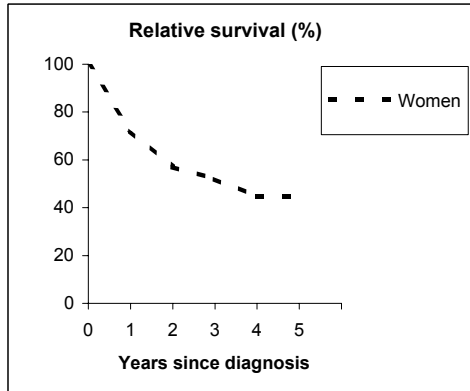
	Men		Women		ALL	
	obs	rel	obs	rel	obs	rel
1 year	-	-	68	71	68	71
3 years	-	-	47	55	47	55
<b>5 years</b>	-	-	<b>38</b>	<b>49</b>	<b>38</b>	<b>49</b>
95% CI	-	-	(30-46)	(39-60)	(30-46)	(39-60)

# VAGINA & VULVA (ICD-IX 184)

## UMBRIA - Incident cases 1994-'96

### AGE CLASSES

AGE CLASSES	Women
15-44	3
45-54	5
55-64	3
65-74	24
75+	36
<b>ALL</b>	<b>71</b>



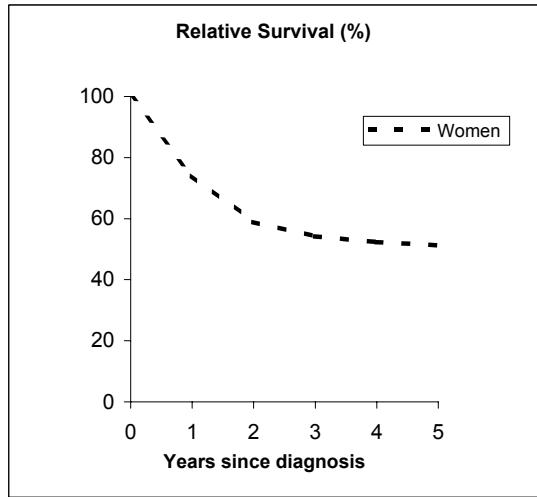
### Observed and Relative survival (%) (in parenthesis 95% confidence limits of 5 years survival)

	<i>Men</i>		<i>Women</i>		<b>ALL</b>	
	<i>obs</i>	<i>rel</i>	<i>obs</i>	<i>rel</i>	<i>obs</i>	<i>rel</i>
1 year	-	-	69	72	69	72
3 years	-	-	45	52	45	52
<b>5 years</b>	-	-	<b>35</b>	<b>45</b>	<b>35</b>	<b>45</b>
95% CI	-	-	(24-47)	(31-60)	(24-47)	(31-60)

# VAGINA & VULVA (ICD-IX 184)

## Pool of Italian Registries

REGISTRY	Number of cases Women
Torino	91
Genova	78
Varese	79
Veneto	224
Parma	57
Modena	58
Ferrara	55
Romagna	47
Macerata	24
Firenze-Prato	146
Umbria	71
Latina	31
Sassari	14
Ragusa	16
<b>Italy</b>	<b>991</b>



### Observed and relative survival (%) by sex and age classes

	15-44		45-54		55-64		65-74		75+		ALL	
	obs	rel	obs	rel	obs	rel	obs	rel	obs	rel	obs	rel
<b>Men</b>												
1 year	-	-	-	-	-	-	-	-	-	-	-	-
3 years	-	-	-	-	-	-	-	-	-	-	-	-
<b>5 years</b>	-	-	-	-	-	-	-	-	-	-	-	-
95% CI	-	-	-	-	-	-	-	-	-	-	-	-
<b>Women</b>												
1 year	97	97	89	89	85	86	77	78	62	66	71	74
3 years	83	83	78	79	66	67	59	62	32	40	47	54
<b>5 years</b>	<b>79</b>	<b>80</b>	<b>71</b>	<b>72</b>	<b>60</b>	<b>62</b>	<b>53</b>	<b>58</b>	<b>23</b>	<b>36</b>	<b>40</b>	<b>51</b>
95% CI	(62-90)	(62-91)	(57-82)	(58-84)	(51-69)	(53-71)	(47-59)	(52-65)	(20-27)	(31-42)	(37-44)	(47-55)
<b>Total</b>												
1 year	97	97	89	89	85	86	77	78	62	66	71	74
3 years	83	83	78	79	66	67	59	62	32	40	47	54
<b>5 years</b>	<b>79</b>	<b>80</b>	<b>71</b>	<b>72</b>	<b>60</b>	<b>62</b>	<b>53</b>	<b>58</b>	<b>23</b>	<b>36</b>	<b>40</b>	<b>51</b>
95% CI	(62-90)	(62-91)	(57-82)	(58-84)	(51-69)	(53-71)	(47-59)	(52-65)	(20-27)	(31-42)	(37-44)	(47-55)

### Five Years Age-adjusted Relative Survival of 1986-89 and 1990-94 incident cases

